



Fiscal Year 2026-2027
Preliminary Budget

Jordan Wise, Chief Appraiser

February 11, 2026



FORT BEND CENTRAL APPRAISAL DISTRICT

TO: Presiding Officers, Fort Bend County Taxing Units and FBCAD Board of Directors
FROM: Jordan T. Wise, Chief Appraiser
DATE: February 12, 2026
SUBJECT: Fiscal Year 2026-2027 Proposed Budget Proposal

Attached to this message, you will find information for our Preliminary Fiscal Year 2027 budget. Throughout the past year, taxing units like yours advised the appraisal district that receiving the budget as early as possible would assist with your planning. We have made a concerted effort to meet your needs and deliver the budget earlier in the calendar year.

This organization and its Board of Directors are committed to building an appraisal district that provides excellent mass appraisals and quality customer services, leverages technology to improve efficiency and accuracy, and continues to improve our outreach and public education, while meeting the challenges of a rapidly growing county. The process to develop this budget officially began in October 2025 when the Board of Directors held a pre-preliminary budget workshop to identify areas of interest and associated priorities. During that meeting, areas of focus included balancing our legislative mandates with updates to technology, services, facilities, and personnel. The process continued in February when the Board of Directors held a budget workshop to further refine the budget. The preliminary budget reflects the work product of those meetings and aims to meet the priorities identified by the Board so that we may effectively serve all of Fort Bend County.

We developed the preliminary budget following a holistic approach, linking internal proposals to our strategic goals and long-term planning efforts. The total preliminary budget is \$36,422,938, which represents an increase of 4.71% (or \$1,638,582) when compared to the District's fiscal year 2026 budget of \$34,784,356.

Please note that this is the preliminary budget and is subject to change. Our team is actively working with our vendors and service providers to ensure we are receiving the best possible options on pricing and contract terms.

The following is a summary of the budget highlights.

New Facility

The appraisal district is currently in the process of acquiring larger facilities to house our team for the next 20-plus years. The costs for larger offices were presented last year at this time and are included in the current fiscal year budget. In addition, we have reallocated funds within the budget to fully account for the anticipated expenses associated with a larger facility. Said differently, increases to the FBCAD preliminary budget are a result of items other than costs associated with a larger office building. Please note, there will be a slight overlap in costs as the transition will take a few months to occur. These include lease payments, utilities, security, and building insurance. We anticipate these costs to level out once we have completed the move.

New Positions

Each year, the appraisal district leadership team evaluates our staffing level, reviews current needs, and forecasts future demands. After several years of planned and necessary growth in staffing, we feel the

Fiscal Year 2027 Proposed Budget

Page 2

office is largely staffed at an appropriate level. We did identify a few areas where additional team members would improve the organization as a whole, as well as provide opportunities to better serve the public. The result of these reviews is an increase in staff by five (5) full time employees (FTEs).

The first of the new positions is an Appraisal Operations Specialist, who will help ensure our office is meeting its regulatory and statutory compliance requirements and provide assistance to the appraisal teams on their annual and special projects. The next new position is a Director of Information and Assistance, who will focus on interfacing with the public at large and the taxing units. This role previously existed within the budget, but it was repurposed as a part of a reorganization. Restoring this position will ensure that dedicated attention to public engagement, education, and communications with our stakeholders. The budget also includes a Human Resources Recruitment Specialist who will assist with recruiting new skilled workers to the District and retaining our existing talent. Finally, two Desktop Support Specialist positions have been added to the staffing schedule. These two positions will work to ensure that District IT systems and the Appraisal Review Board's hearings continue to run well.

These positions are necessary for FBCAD to fulfill our statutory obligations for a growing county and continue to provide excellent customer service. We will also continue to utilize interns, temporary personnel, and part-time employees to mitigate the overall growth of full-time employees. The total cost, with benefits, for the new positions is approximately \$555,430, which represents 33.9% of the total increase.

Hardware and Software

The preliminary budget includes approximately \$612,500 allocated for the team to refresh desktops, laptops, tablets, and servers reaching the end of their useful lives. These costs are a part of an asset replacement program (four years for computers and five years for server and associated hardware). These items are essential to maintaining a stable IT system, enabling us to serve our community all day, every day.

Funding for new software programs, software enhancements of current applications, and maintenance of existing applications and services is also included in the preliminary budget. These funds will be used to continue existing programs and to launch new initiatives aimed at improving efficiency and reducing processing times. This cost center is a part of our effort to utilize software and technology to streamline existing processes and enhance services for the public. One example of this is migrating our computer assisted mass appraisal (CAMA) software from being locally hosted to being located in the cloud. This should address concerns about speed, performance, and mitigate downtime. The cost of this migration represents an increase of approximately \$225,000, or 13.7% of the total increase.

Health Insurance Costs

The budget does include an increase in costs associated with health insurance. Like many of the entities, we see insurance costs continue to rise year over year. While we have been able to mitigate the growth of insurance costs over the previous few years, our insurance brokers advised us to budget for a double-digit increase in insurance premiums for the 2027 fiscal year.

Cost of Living Adjustment (COLA)

Please note, the preliminary budget does *not* include any cost-of-living adjustment (COLA). We will continue to monitor our current salary administration program and are currently not making any across-the-board increases.

Budget Funding and Allocations

It is worth noting that the only available mechanism for funding our operation is through an effective budget. Unlike the entities that fund our budget, we are not a taxing unit and are unable to utilize bonds or other funding programs. We understand that many entities are also dealing with meeting the needs of a high growth county, legislative restrictions, and other external factors. Please be assured that we have been very conscientious about the development of this budget. Finally, this budget aims to strike the balance between effectiveness and efficiency. The total budget request represents 1.24% of the total 2025 tax levy across all taxing units within the boundaries of Fort Bend County; meaning FBCAD only costs approximately \$0.0124 of each tax dollar.

Next Steps

As mentioned above, we hope that we are assisting with your planning processes by providing you with this preliminary budget earlier than ever. Please note that this is Fort Bend Central Appraisal District's preliminary budget and is subject to further changes before adoption later this spring. The Board of Directors will hold a public hearing on the budget in April and is expected to vote on the budget at the same meeting.

As always, your consideration and input regarding the District's operations in this proposed budget document is greatly appreciated.

Sincerely,



Jordan T. Wise, RPA, CTA, CCA
Chief Appraiser

**Fort Bend Central Appraisal District
FY26-27 Preliminary Budget**

Table of Contents

	Page(s)
Transmittal Letter	
GFOA Distinguished Budget Award (FY2026)	1
Expenditure Summary by Category	2
Departmental Summary	3
Departmental Expenditure Detail	4-14
Taxing Unit Allocation Summary	15
Taxing Unit Allocation	16-19
Position and Pay Grades (by Pay Grade)	20-21
Pay Plan Schedule	22
Position Schedule	23-24
New Position Schedule	25
Fact Sheet (2025)	26-27



GOVERNMENT FINANCE OFFICERS ASSOCIATION

*Distinguished
Budget Presentation
Award*

PRESENTED TO

**Fort Bend Central Appraisal District
Texas**

For the Fiscal Year Beginning

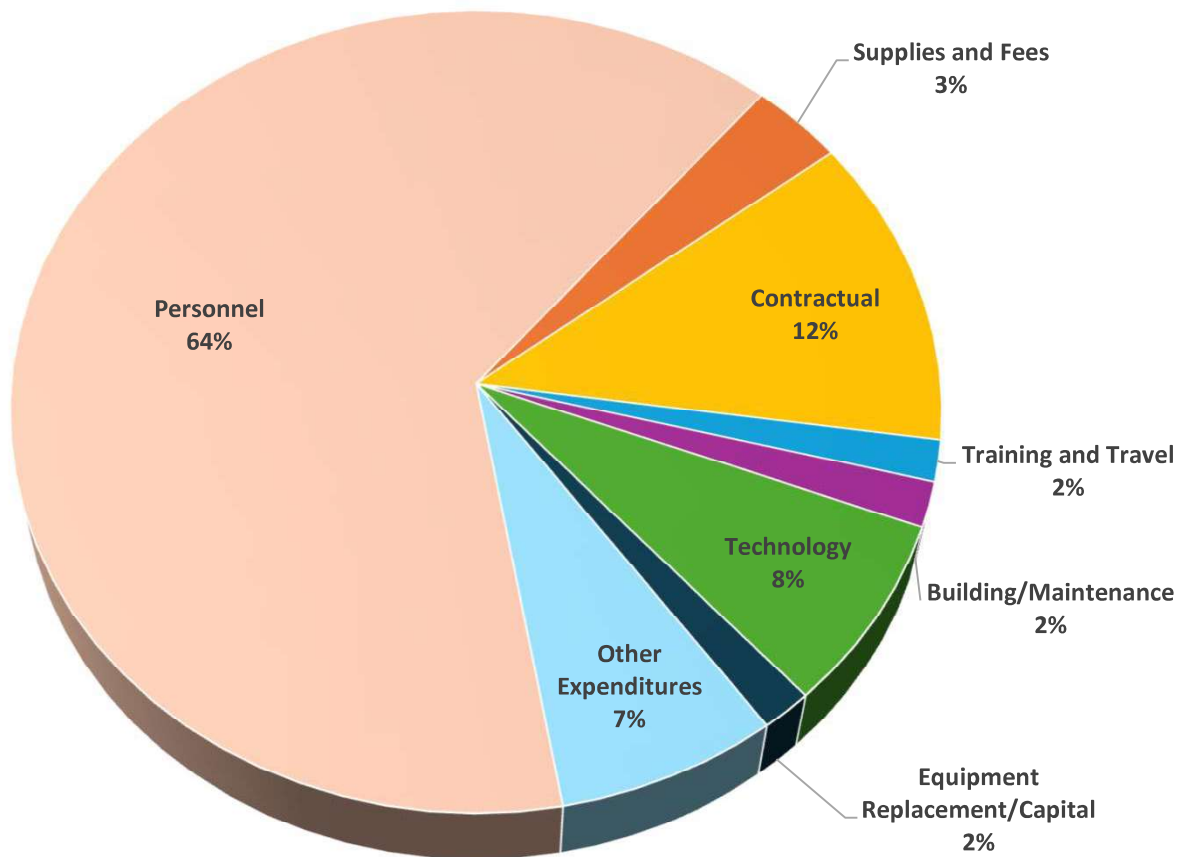
September 01, 2025

Christopher P. Morrill

Executive Director

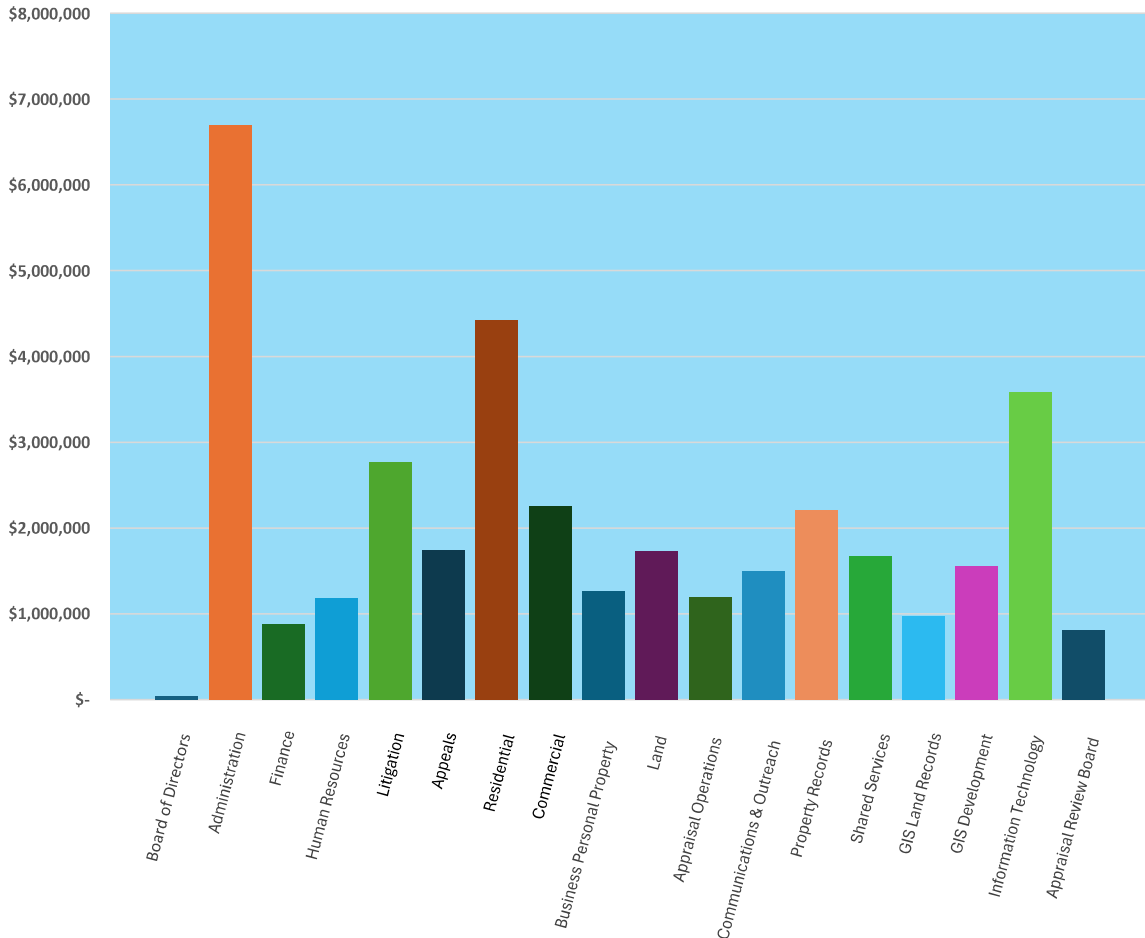
**Fort Bend Central Appraisal District
FY26-27 Proposed Budget
Expenditure Summary by Category**

Category	FY25 Actual	FY26 Adopted Budget	FY27 Proposed Budget	Budget Inc (Dec) (FY26/FY27)
Personnel	17,920,587	20,623,165	23,302,688	2,679,523
Supplies and Fees	885,502	1,299,104	1,266,150	-32,954
Contractual	3,710,564	4,513,824	4,572,256	58,432
Training and Travel	310,632	495,251	608,606	113,355
Building/Maintenance	182,027	221,897	658,782	436,885
Technology	1,309,338	2,904,346	2,757,067	-147,279
Equipment Replacement/Capital	447,385	612,500	612,500	0
Other Expenditures	692,110	4,114,269	2,644,889	-1,469,380
Total	25,458,144	34,784,356	36,422,938	1,638,582



**Fort Bend Central Appraisal District
FY26-27 Proposed Budget
Departmental Summary**

Dept #	Dept Name	FY25 Actual	FY26 Adopted Budget	FY27 Proposed Budget	Budget Inc (Dec) (FY26/FY27)	Inc (Dec) %
1000-01	Board of Directors	33,291	41,700	41,100	(600)	-1.4%
1500-02	Administration	3,280,876	8,348,659	6,693,078	(1,655,581)	-19.8%
1500-03	Finance	704,148	798,323	878,332	80,009	10.0%
1500-04	Human Resources	533,296	826,494	1,179,517	353,023	42.7%
1700-10	Legal Administration	338,124	373,139	-	(373,139)	-100.0%
1700-11	Litigation	2,041,854	2,679,578	2,758,708	79,130	3.0%
1700-12	Appeals	1,274,080	1,523,803	1,734,948	211,145	13.9%
2000-20	Residential	3,600,584	4,088,963	4,417,040	328,077	8.0%
2000-21	Commercial	1,887,381	2,029,462	2,257,117	227,655	11.2%
2000-22	Business Personal Property	1,066,319	1,180,738	1,259,704	78,966	6.7%
2000-23	Land	1,303,687	1,601,061	1,731,056	129,995	8.1%
2000-24	Appraisal Operations	-	-	1,189,385	1,189,385	100.0%
2500-25	Communications & Outreach	1,195,806	1,393,929	1,495,397	101,468	7.3%
2500-26	Property Records	1,667,839	1,935,511	2,208,298	272,787	14.1%
3000-30	Shared Services	1,469,910	1,601,080	1,676,435	75,355	4.7%
3500-35	GIS Land Records	736,859	869,917	967,360	97,443	11.2%
3500-36	GIS Development	989,738	1,162,251	1,555,263	393,012	33.8%
4000-40	Information Technology	2,439,787	3,367,893	3,577,150	209,257	6.2%
7000-70	Appraisal Review Board	894,563	961,855	803,052	(158,803)	-16.5%
	Grand Total	25,458,144	34,784,356	36,422,938	1,638,582	4.71%



**Fort Bend Central Appraisal District
FY26-27 Proposed Budget
Departmental Expenditure Detail**

Dept/Account#	Account Title	FY25 Actual	FY26 Adopted Budget	FY27 Proposed Budget	Budget Inc (Dec) (FY26/FY27)	Inc (Dec) %
Division: 01 - Board of Directors						
Supplies and Fees						
100-1000-01-51500	Board of Director Expenses	8,380	3,600	8,000	4,400	
Contractual						
100-1000-01-52305	Liaison Officer	11,752	15,600	15,600	-	
Training and Travel						
100-1000-01-53000	Training & Conferences	13,160	17,500	17,500	-	
Technology						
100-1000-01-55050	New Software	-	5,000	-	(5,000)	
Total Board of Directors		33,291	41,700	41,100	(600)	-1.4%
Division: 02 - Administration						
Personnel						
100-1500-02-50000	Salaries & Wages	1,048,043	1,219,039	1,493,209	274,170	
100-1500-02-50025	Part-Time/Seasonal Pay	-	-	-	-	
100-1500-02-50050	Overtime Pay	-	-	-	-	
100-1500-02-50075	Professional Development Pay	15,750	15,750	20,250	4,500	
100-1500-02-50080	Bilingual Pay	-	-	-	-	
100-1500-02-50100	FICA Expense	14,677	17,904	22,786	4,882	
100-1500-02-50120	Retirement Expense	159,216	194,699	262,797	68,098	
100-1500-02-50125	Unemploy Exp (TWC)	-	936	1,170	234	
100-1500-02-50130	Health Insurance Expense	123,584	160,610	218,614	58,004	
100-1500-02-50140	Worker's Comp Expense	-	1,247	2,127	880	
100-1500-02-50150	Life Ins/LTD Expense/Vision	7,661	5,114	13,063	7,949	
Supplies and Fees						
100-1500-02-51300	Copy Expense	7,653	32,365	32,365	-	
100-1500-02-51000	Office Expense	12,698	400	15,000	14,600	
100-1500-02-51400	Postage/Mailing Expense	383,989	547,545	486,445	(61,100)	
100-1500-02-51427	Licensing	8,582	7,075	7,075	-	
100-1500-02-51466	Publications	25,004	42,250	51,875	9,625	
100-1500-02-51470	Printing & Notices	95,940	284,304	233,399	(50,905)	
100-1500-02-51490	Office Furniture & Fixtures	62,989	25,300	-	(25,300)	
100-1500-02-51499	District Memberships	19,424	20,825	20,825	-	
Contractual						
100-1500-02-52225	Security Services	93,169	103,000	131,732	28,732	
100-1500-02-52280	Other Professional Fees	33,499	92,000	10,500	(81,500)	
100-1500-02-52282	Registration Fees	213	-	-	-	
100-1500-02-52350	Industrial & Mineral Properties	125,000	130,000	140,000	10,000	
100-1500-02-52360	Building/Equipment Lease	115,424	126,100	72,250	(53,850)	
Training and Travel						
100-1500-02-53000	Training & Conferences	52,830	84,465	72,778	(11,687)	
100-1500-02-53300	Mileage	1,499	2,000	2,000	-	
Building/Maintenance						
100-1500-02-54060	Shredding & Recycling	9,210	13,200	13,200	-	
100-1500-02-54065	Cleaning & Paper Supplies	1,614	8,800	15,000	6,200	
100-1500-02-54100	Building Maintenance/Custodial	71,281	66,444	300,000	233,556	
100-1500-02-54200	Utilities (Elec, Gas, Water)	52,493	64,320	258,500	194,180	

**Fort Bend Central Appraisal District
FY26-27 Proposed Budget
Departmental Expenditure Detail**

Dept/Account#	Account Title	FY25 Actual	FY26 Adopted Budget	FY27 Proposed Budget	Budget Inc (Dec) (FY26/FY27)	Inc (Dec) %
Technology						
100-1500-02-55050	New Software	34,540	550,000	-	(550,000)	
100-1500-02-55100	Software Maintenance/Subscriptions	158,975	427,350	67,350	(360,000)	
100-1500-02-55110	Software Enhancements	5,280	150,000	150,000	-	
100-1500-02-55120	Software Training	8,400	7,200	-	(7,200)	
Other Expenditures						
100-1500-02-70000	Principle	391,145	313,431	1,225,286	911,855	
100-1500-02-70100	Interest	41,095	134,986	1,353,483	1,218,497	
100-1500-02-75000	Election Expenses	-	500,000	-	(500,000)	
100-1500-02-75005	New Facility Holding Costs	100,000	3,000,000	-	(3,000,000)	
Total Administration		3,280,876	8,348,659	6,693,078	(1,655,581)	-19.8%
Division: 03 - Finance						
Personnel						
100-1500-03-50000	Salaries & Wages	303,690	395,647	416,483	20,836	
100-1500-03-50025	Part-Time & Seasonal Pay	3,517	7,200	-	(7,200)	
100-1500-03-50050	Overtime Pay	3,215	6,313	5,823	(490)	
100-1500-03-50075	Professional Development Pay	3,250	3,250	4,000	750	
100-1500-03-50080	Bilingual Pay	-	-	-	-	
100-1500-03-50100	FICA Expense	5,391	6,511	6,423	(88)	
100-1500-03-50120	Retirement Expense	43,821	58,952	74,074	15,122	
100-1500-03-50125	Unemploy Exp (TWC)	16,303	468	468	-	
100-1500-03-50130	Health Insurance Expense	59,772	76,858	79,363	2,505	
100-1500-03-50140	Worker's Comp Expense	7,465	418	599	181	
100-1500-03-50150	Life Ins/LTD Expense	2,757	1,913	3,699	1,786	
Supplies and Fees						
100-1500-03-51000	Office Expense - District	26,150	9,200	13,500	4,300	
100-1500-03-51001	Office Expense - Finance	-	-	300	300	
100-1500-03-51300	Copy Expense	726	-	-	-	
100-1500-03-51400	Postage/Mailing Expense	-	-	1,100	1,100	
100-1500-03-51466	Publications	862	2,500	2,500	-	
100-1500-03-51499	District Memberships	310	3,500	3,500	-	
Contractual						
100-1500-03-52275	Audit Fees	24,150	27,000	30,000	3,000	
100-1500-03-52300	Bank Fees	3,623	-	3,000	3,000	
100-1500-03-52400	Advertising/Marketing	4,552	1,250	1,250	-	
100-1500-03-52600	Property & Liability Insurance	73,996	80,979	148,490	67,511	
100-1500-03-52699	Public Entity Liability Insurance	39,379	43,307	45,000	1,693	
Training and Travel						
100-1500-03-53000	Training & Conferences	17,143	42,557	30,460	(12,097)	
100-1500-03-53300	Mileage	21	500	100	(400)	
Technology						
100-1500-03-55050	New Software	64,053	8,000	4,000	(4,000)	
100-1500-03-55110	Software Enhancements	-	5,000	-	(5,000)	
100-1500-03-55100	Software Maintenance/Subscriptions	-	17,000	4,200	(12,800)	
Total Finance		704,148	798,323	878,332	80,009	10.0%

**Fort Bend Central Appraisal District
FY26-27 Proposed Budget
Departmental Expenditure Detail**

Dept/Account#	Account Title	FY25 Actual	FY26 Adopted Budget	FY27 Proposed Budget	Budget Inc (Dec) (FY26/FY27)	Inc (Dec) %
Division: 04 - Human Resources						
Personnel						
100-1500-04-50000	Salaries & Wages	245,005	318,452	347,705	29,253	
100-1500-04-50050	Overtime Pay	5,123	8,190	6,121	(2,069)	
100-1500-04-50075	Professional Development Pay	-	1,000	1,000	-	
100-1500-04-50100	FICA Expense	3,519	4,737	5,322	585	
100-1500-04-50120	Retirement Expense	34,109	47,242	61,385	14,143	
100-1500-04-50125	Unemploy Exp (TWC)	-	431	351	(80)	
100-1500-04-50130	Health Insurance Expense	32,104	101,561	55,577	(45,984)	
100-1500-04-50140	Worker's Comp Expense	-	330	497	167	
100-1500-04-50150	Life Ins/LTD Expense	1,860	1,493	3,002	1,509	
100-1500-04-50175	Supplemental Ins & Longevity (CAD)	-	-	279,000	279,000	
100-1500-04-50177	Salary Lapse	-	-	(150,000)	(150,000)	
100-1500-04-50900	New Positions	-	-	136,707	136,707	
Supplies and Fees						
100-1500-04-51000	Office Expense	1,027	6,300	3,500	(2,800)	
100-1500-04-51410	Employee Recognition	43,916	27,000	33,000	6,000	
100-1500-04-51460	Wearing Apparel	14,706	25,000	30,000	5,000	
100-1500-04-51466	Publications	5,712	-	-	-	
100-1500-04-51470	Printing Expenses	12,856	11,000	20,000	9,000	
100-1500-04-51496	Sales Data and Membership Fees	100	-	-	-	
100-1500-04-51499	District Memberships	2,832	1,000	11,000	10,000	
Contractual						
100-1500-04-52000	Professional Services	19,804	22,500	25,000	2,500	
100-1500-04-52200	Temp/Contract Employees	488	69,000	75,000	6,000	
100-1500-04-52280	Other Prof Ins	31,090	87,500	46,500	(41,000)	
100-1500-04-52400	Advertising/Marketing	2,703	3,000	5,000	2,000	
Training and Travel						
100-1500-04-53000	Training & Conferences	43,521	70,008	170,100	100,092	
100-1500-04-53300	Mileage	544	1,250	1,750	500	
Technology						
100-1500-04-55050	New Software	3,900	-	-	-	
100-1500-04-55100	Software Maintenance/Subscriptions	28,378	19,500	12,000	(7,500)	
Total Human Resources		533,296	826,494	1,179,517	353,023	42.7%
Division: 10 - Legal Administration						
Personnel						
100-1700-10-50000	Salaries & Wages	240,758	255,225	-	(255,225)	
100-1700-10-50050	Overtime Pay	5,006	6,181	-	(6,181)	
100-1700-10-50075	Professional Development Pay	5,000	5,000	-	(5,000)	
100-1700-10-50100	FICA Expense	3,555	3,863	-	(3,863)	
100-1700-10-50120	Retirement Expense	34,455	38,770	-	(38,770)	
100-1700-10-50125	Unemploy Exp (TWC)	-	234	-	(234)	
100-1700-10-50130	Health Insurance Expense	35,473	40,789	-	(40,789)	
100-1700-10-50140	Worker's Comp Expense	-	269	-	(269)	
100-1700-10-50150	Life Ins/LTD Expense	1,709	1,058	-	(1,058)	
Supplies						
100-1700-10-51000	Office Expense	-	100	-	(100)	
100-1700-10-51466	Publications	2,454	3,000	-	(3,000)	

**Fort Bend Central Appraisal District
FY26-27 Proposed Budget
Departmental Expenditure Detail**

Dept/Account#	Account Title	FY25 Actual	FY26 Adopted Budget	FY27 Proposed Budget	Budget Inc (Dec) (FY26/FY27)	Inc (Dec) %
Training and Travel						
100-1700-10-53000	Training & Conferences (Legal-Adm)	9,122	17,650	-	(17,650)	
100-1700-10-53300	Mileage	591	1,000	-	(1,000)	
Total Legal Admin.		338,124	373,139	-	(373,139)	-100.0%

Division: 11 - Litigation

Personnel						
100-1700-11-50000	Salaries & Wages	643,136	761,798	795,308	33,510	
100-1700-11-50025	Part-Time Seasonal Pay	9,071	-	-	-	
100-1700-11-50050	Overtime Pay	4,092	7,158	15,424	8,266	
100-1700-11-50075	Professional Development Pay	10,500	10,500	13,750	3,250	
100-1700-11-50080	Bilingual Pay	777	1,950	1,950	-	
100-1700-11-50100	FICA Expense	9,708	11,330	12,396	1,066	
100-1700-11-50120	Retirement Expense	90,177	113,718	142,973	29,255	
100-1700-11-50125	Unemploy Exp (TWC)	-	936	936	-	
100-1700-11-50130	Health Insurance Expense	107,973	139,667	164,089	24,422	
100-1700-11-50140	Worker's Comp Expense	-	789	1,157	368	
100-1700-11-50150	Life Ins/LTD Expense	6,647	4,082	7,220	3,138	

Supplies and Fees

100-1700-11-51000	Office Expense	-	400	600	200	
100-1700-11-51496	Sales Data & Membership Fees	-	24,000	28,245	4,245	

Contractual

100-1700-11-52100	Legal Contracts	1,136,566	1,550,000	1,550,000	-	
-------------------	-----------------	-----------	-----------	-----------	---	--

Training and Travel

100-1700-11-53000	Training & Conferences	17,870	25,250	24,660	(590)	
100-1700-11-53300	Mileage	1,672	1,000	-	(1,000)	

Technology

100-1700-11-55100	Software Maintenance/Subscriptions	3,663	27,000	-	(27,000)	
Total Litigation		2,041,854	2,679,578	2,758,708	79,130	3.0%

Division: 12 - Appeals

Personnel						
100-1700-12-50000	Salaries & Wages	663,630	734,943	816,776	81,833	
100-1700-12-50025	Part-Time & Seasonal Pay	219,551	235,200	261,120	25,920	
100-1700-12-50050	Overtime Pay	16,328	43,630	56,705	13,075	
100-1700-12-50075	Professional Development Pay	8,250	8,250	11,750	3,500	
100-1700-12-50080	Bilingual Pay	-	1,950	2,795	845	
100-1700-12-50100	FICA Expense	26,998	31,628	35,752	4,124	
100-1700-12-50120	Retirement Expense	93,378	110,348	148,198	37,850	
100-1700-12-50125	Unemploy Exp (TWC)	-	1,293	1,287	(6)	
100-1700-12-50130	Health Insurance Expense	166,404	195,928	214,911	18,983	
100-1700-12-50140	Worker's Comp Expense	-	1,039	1,618	579	
100-1700-12-50150	Life Ins/LTD Expense	6,365	4,074	7,486	3,412	

Supplies and Fees

100-1700-12-51000	Office Expense	608	5,145	3,200	(1,945)	
100-1700-12-51400	Postage	28	-	-	-	
100-1700-12-51470	Printing & Notices	-	9,000	9,000	-	
100-1700-12-51496	Sales Data & Membership Fees	-	6,000	7,200	1,200	
100-1700-12-51500	Miscellaneous	915	-	-	-	

**Fort Bend Central Appraisal District
FY26-27 Proposed Budget
Departmental Expenditure Detail**

Dept/Account#	Account Title	FY25 Actual	FY26 Adopted Budget	FY27 Proposed Budget	Budget Inc (Dec) (FY26/FY27)	Inc (Dec) %
Contractual						
100-1700-12-52100	Arbitrator Fees	40,405	62,500	75,000	12,500	
Training and Travel						
100-1700-12-53000	Training & Conferences	6,053	13,775	21,650	7,875	
100-1700-12-53300	Mileage	1,186	3,600	5,500	1,900	
Technology						
100-1700-12-55050	New Software	23,983	500	-	(500)	
100-1700-12-55100	Software Maintenance/Subscriptions	-	15,000	15,000	-	
100-1700-12-55110	Software Enhancements	-	40,000	40,000	-	
Total Appeals		1,274,080	1,523,803	1,734,948	211,145	13.9%

Division: 20 - Residential						
Personnel						
100-2000-20-50000	Salaries & Wages	2,428,654	2,709,577	2,875,915	166,338	
100-2000-20-50025	Part-Time & Seasonal Pay	40,622	26,400	29,920	3,520	
100-2000-20-50050	Overtime Pay	35,056	84,375	107,688	23,313	
100-2000-20-50075	Professional Development Pay	30,500	29,500	32,500	3,000	
100-2000-20-50080	Bilingual Pay	-	6,039	6,825	786	
100-2000-20-50100	FICA Expense	37,653	43,227	48,196	4,969	
100-2000-20-50120	Retirement Expense	342,149	410,493	526,087	115,594	
100-2000-20-50125	Unemploy Exp (TWC)	-	4,689	4,446	(243)	
100-2000-20-50130	Health Insurance Expense	581,775	693,775	678,410	(15,365)	
100-2000-20-50140	Worker's Comp Expense	-	2,881	4,304	1,423	
100-2000-20-50150	Life Ins/LTD Expense	25,548	16,232	26,348	10,116	
Supplies and Fees						
100-2000-20-51000	Office Expense	887	15,500	15,700	200	
100-2000-20-51466	Publications	6,359	1,450	3,500	2,050	
100-2000-20-51485	Appraisal Field Supplies	4,134	5,750	7,800	2,050	
100-2000-20-51496	Sales Data & Membership Fees	11,522	-	-	-	
100-2000-20-52280	Other Professional Services	8,453	12,500	-	(12,500)	
100-2000-20-53000	Training & Conferences	15,970	11,775	14,400	2,625	
100-2000-20-53300	Mileage	31,302	14,800	35,000	20,200	
Total Residential		3,600,584	4,088,963	4,417,040	328,077	8.0%

Division: 21 - Commercial						
Personnel						
100-2000-21-50000	Salaries & Wages	1,259,155	1,333,976	1,443,260	109,284	
100-2000-21-50025	Part-Time & Seasonal Pay	14,062	14,400	16,320	1,920	
100-2000-21-50050	Overtime Pay	17,891	36,801	45,751	8,950	
100-2000-21-50075	Professional Development Pay	27,000	28,250	31,750	3,500	
100-2000-21-50080	Bilingual Pay	-	2,945	2,925	(20)	
100-2000-21-50100	FICA Expense	19,274	21,570	24,439	2,869	
100-2000-21-50120	Retirement Expense	179,123	203,390	265,207	61,817	
100-2000-21-50125	Unemploy Exp (TWC)	(33)	1,842	1,755	(87)	
100-2000-21-50130	Health Insurance Expense	224,678	247,745	268,522	20,777	
100-2000-21-50140	Worker's Comp Expense	-	1,430	2,172	742	
100-2000-21-50150	Life Ins/LTD Expense	13,594	7,462	12,999	5,537	
Supplies and Fees						
100-2000-21-51000	Office Expense	2,303	5,020	3,750	(1,270)	

**Fort Bend Central Appraisal District
FY26-27 Proposed Budget
Departmental Expenditure Detail**

Dept/Account#	Account Title	FY25 Actual	FY26 Adopted Budget	FY27 Proposed Budget	Budget Inc (Dec) (FY26/FY27)	Inc (Dec) %
100-2000-21-51466	Publications	1,118	2,800	3,735	935	
100-2000-21-51485	Appraisal Field Supplies	-	2,000	3,650	1,650	
100-2000-21-51496	Sales Data & Membership Fees	90,161	88,381	88,381	-	
Contractual						
100-2000-21-52280	Other Professional Services	13,670	12,500	-	(12,500)	
Training and Travel						
100-2000-21-53000	Training & Conferences	15,496	11,750	20,100	8,350	
100-2000-21-53300	Mileage	9,889	7,200	22,400	15,200	
Total Commercial		1,887,381	2,029,462	2,257,117	227,655	11.2%

Division: 22 - Business Personal Property

Personnel						
100-2000-22-50000	Salaries & Wages	705,006	745,883	822,590	76,707	
100-2000-22-50025	Part-Time & Seasonal Pay	9,017	7,200	-	(7,200)	
100-2000-22-50050	Overtime Pay	22,661	17,746	20,095	2,349	
100-2000-22-50075	Professional Development Pay	7,250	3,000	5,000	2,000	
100-2000-22-50080	Bilingual Pay	-	975	975	-	
100-2000-22-50100	FICA Expense	11,185	11,751	12,758	1,007	
100-2000-22-50120	Retirement Expense	100,718	111,546	147,141	35,595	
100-2000-22-50125	Unemploy Exp (TWC)	-	1,287	1,287	-	
100-2000-22-50130	Health Insurance Expense	173,986	190,022	191,061	1,039	
100-2000-22-50140	Worker's Comp Expense	-	783	1,191	408	
100-2000-22-50150	Life Ins/LTD Expense	6,999	4,425	7,487	3,062	
Supplies and Fees						
100-2000-22-51000	Office Expense	204	550	3,300	2,750	
100-2000-22-51410	Employee Recognition	128	-	-	-	
100-2000-22-51466	Publications	1,053	7,145	7,000	(145)	
100-2000-22-51485	Appraisal Field Supplies	-	2,800	1,650	(1,150)	
100-2000-22-51496	Sales Data & Membership Fees	-	4,500	-	(4,500)	
Contractual						
100-2000-22-52280	Other Professional Services	125	12,500	-	(12,500)	
Training and Travel						
100-2000-22-53000	Training & Conferences	7,537	9,825	17,170	7,345	
100-2000-22-53300	Mileage	2,950	17,900	5,000	(12,900)	
Technology						
100-2000-22-55100	Software Maintenance/Subscriptions	17,500	30,900	16,000	(14,900)	
Total Business Personal Property		1,066,319	1,180,738	1,259,704	78,966	6.7%

Division: 23 - Land

Personnel						
100-2000-23-50000	Salaries & Wages	848,638	1,044,535	1,127,843	83,308	
100-2000-23-50025	Part-Time Seasonal Pay	6,748	14,400	16,320	1,920	
100-2000-23-50050	Overtime Pay	60,986	25,328	29,920	4,592	
100-2000-23-50075	Professional Development Pay	7,000	7,000	8,000	1,000	
100-2000-23-50080	Bilingual Pay	-	975	975	-	
100-2000-23-50100	FICA Expense	13,329	16,870	19,075	2,205	
100-2000-23-50120	Retirement Expense	124,768	156,152	203,342	47,190	
100-2000-23-50125	Unemploy Exp (TWC)	-	1,956	1,755	(201)	

**Fort Bend Central Appraisal District
FY26-27 Proposed Budget
Departmental Expenditure Detail**

Dept/Account#	Account Title	FY25 Actual	FY26 Adopted Budget	FY27 Proposed Budget	Budget Inc (Dec) (FY26/FY27)	Inc (Dec) %
100-2000-23-50130	Health Insurance Expense	187,863	251,544	219,480	(32,064)	
100-2000-23-50140	Worker's Comp Expense	-	1,102	1,672	570	
100-2000-23-50150	Life Ins/LTD Expense	6,887	6,124	10,109	3,985	
Supplies and Fees						
100-2000-23-51000	Office Expenses	1,717	4,900	4,500	(400)	
100-2000-23-51470	Printing & Expenses	-	175	600	425	
100-2000-23-51485	Appraisal Field Supplies	168	350	750	400	
100-2000-23-51496	Sales Data & Membership Fees	-	6,000	7,470	1,470	
Contractual						
100-2000-23-52280	Other Professional Services	36,523	37,500	50,000	12,500	
Training and Travel						
100-2000-23-53000	Training & Conferences	8,522	11,550	14,845	3,295	
100-2000-23-53300	Mileage	538	14,600	14,400	(200)	
Total Land		1,303,687	1,601,061	1,731,056	129,995	8.1%
Division: 24 - Appraisal Operations						
Personnel						
100-2000-24-50000	Salaries & Wages	-	-	152,088	152,088	
100-2000-24-50075	Professional Development Pay	-	-	2,000	2,000	
100-2000-24-50100	FICA Expense	-	-	2,311	2,311	
100-2000-24-50120	Retirement Expense	-	-	26,657	26,657	
100-2000-24-50125	Unemploy Exp (TWC)	-	-	117	117	
100-2000-24-50130	Health Insurance Expense	-	-	27,222	27,222	
100-2000-24-50140	Worker's Comp Expense	-	-	216	216	
100-2000-24-50150	Life Ins/LTD Expense	-	-	1,306	1,306	
100-2000-24-50900	New Position Request	-	-	113,417	113,417	
Supplies and Fees						
100-2000-24-51000	Office Expense	-	-	1,500	1,500	
100-2000-24-51466	Publications	-	-	13,400	13,400	
100-2000-24-51496	Sales Data & Membership Fees	-	-	35,400	35,400	
Contractual						
100-2000-24-52280	Other Professional Services	-	-	100,000	100,000	
100-2000-24-53000	Training & Conferences	-	-	13,550	13,550	
Training and Travel						
100-2000-24-53300	Mileage	-	-	1,050	1,050	
100-2000-24-55050	New Software	-	-	210,750	210,750	
Technology						
100-2000-24-55100	Software Maintenance/Subscriptions	-	-	456,200	456,200	
100-2000-24-55110	Software Enhancements	-	-	25,000	25,000	
100-2000-24-55120	Software Training	-	-	7,200	7,200	
Total Appraisal Operations		-	-	1,189,385	1,189,385	100.0%
Division: 25 - Communic. & Outreach						
Personnel						
100-2500-25-50000	Salaries & Wages	713,417	821,503	940,715	119,212	
100-2500-25-50025	Part-Time & Seasonal Pay	41,849	76,800	38,080	(38,720)	
100-2500-25-50050	Overtime Pay	7,531	32,530	16,086	(16,444)	

**Fort Bend Central Appraisal District
FY26-27 Proposed Budget
Departmental Expenditure Detail**

Dept/Account#	Account Title	FY25 Actual	FY26 Adopted Budget	FY27 Proposed Budget	Budget Inc (Dec) (FY26/FY27)	Inc (Dec) %
100-2500-25-50075	Professional Development Pay	1,000	1,000	1,000	-	
100-2500-25-50080	Bilingual Pay	-	3,211	3,900	689	
100-2500-25-50100	FICA Expense	12,872	18,990	17,876	(1,114)	
100-2500-25-50120	Retirement Expense	98,952	122,985	168,075	45,090	
100-2500-25-50125	Unemploy Exp (TWC)	-	1,755	1,755	-	
100-2500-25-50130	Health Insurance Expense	169,784	221,815	133,180	(88,635)	
100-2500-25-50140	Worker's Comp Expense	-	943	1,421	478	
100-2500-25-50150	Life Ins/LTD Expense	5,380	5,467	8,559	3,092	
100-2500-25-50900	New Position Request	-	-	130,000	130,000	

Supplies and Fees						
100-2500-25-51000	Office Expense	2,344	4,505	2,000	(2,505)	
100-2500-25-51455	Photo Equipment	1,998	-	-	-	

Contractual						
100-2500-25-52200	Temp/Contract Employees	85,218	-	-	-	
100-2500-25-52280	Other Professional Services	34,861	47,000	-	(47,000)	
100-2500-25-52400	Advertising/Marketing	2,457	10,000	5,000	(5,000)	

Training and Travel						
100-2500-25-53000	Training & Conferences	2,672	8,125	6,750	(1,375)	
100-2500-25-53300	Mileage	374	1,000	1,000	-	

Technology						
100-2500-25-55050	New Software	2,065	-	-	-	
100-2500-25-55100	Software Maintenance/Subscriptions	13,032	16,300	20,000	3,700	
Total Communications & Outreach		1,195,806	1,393,929	1,495,397	101,468	7.3%

Division: 26 - Property Records						
Personnel						
100-2500-26-50000	Salaries & Wages	846,372	934,870	1,050,429	115,559	
100-2500-26-50050	Overtime Pay	128,388	68,227	114,445	46,218	
100-2500-26-50075	Professional Development Pay	1,000	1,000	1,000	-	
100-2500-26-50080	Bilingual Pay	-	1,853	4,875	3,022	
100-2500-26-50100	FICA Expense	13,845	14,586	17,729	3,143	
100-2500-26-50120	Retirement Expense	134,405	146,076	204,477	58,401	
100-2500-26-50125	Unemploy Exp (TWC)	-	2,169	2,106	(63)	
100-2500-26-50130	Health Insurance Expense	242,214	316,433	347,158	30,725	
100-2500-26-50140	Worker's Comp Expense	-	1,015	1,655	640	
100-2500-26-50150	Life Ins/LTD Expense	7,692	6,058	9,825	3,767	

Supplies and Fees						
100-2500-26-51000	Office Expense	2,470	8,200	800	(7,400)	
100-2500-26-51400	Postage/Mailing Expense	-	15,000	15,000	-	
100-2500-26-51470	Printing & Expenses	-	500	500	-	

Contractual						
100-2500-26-52290	Exemption Verification	145,304	265,180	265,180	-	
100-2500-26-52325	Records, Deeds, & Titles	1,222	3,219	3,219	-	

Training and Travel						
100-2500-26-53000	Training & Conferences	1,600	10,125	8,900	(1,225)	
100-2500-26-53300	Mileage	379	1,000	1,000	-	

Technology						
-------------------	--	--	--	--	--	--

**Fort Bend Central Appraisal District
FY26-27 Proposed Budget
Departmental Expenditure Detail**

Dept/Account#	Account Title	FY25 Actual	FY26 Adopted Budget	FY27 Proposed Budget	Budget Inc (Dec) (FY26/FY27)	Inc (Dec) %
100-2500-26-55100	Software Maintenance/Subscriptions	142,949	140,000	160,000	20,000	
Total Property Records		1,667,839	1,935,511	2,208,298	272,787	14.1%

Division: 30 - Shared Services

Personnel						
100-3000-30-50000	Salaries & Wages	976,123	988,693	1,041,800	53,107	
100-3000-30-50025	Part-Time & Seasonal Pay	13,701	14,400	-	(14,400)	
100-3000-30-50050	Overtime Pay	32,146	84,337	42,199	(42,138)	
100-3000-30-50075	Professional Development Pay	3,000	3,000	6,000	3,000	
100-3000-30-50080	Bilingual Pay	-	3,900	5,850	1,950	
100-3000-30-50100	FICA Expense	15,076	16,900	16,616	(284)	
100-3000-30-50120	Retirement Expense	139,253	156,835	191,633	34,798	
100-3000-30-50125	Unemploy Exp (TWC)	-	2,106	1,989	(117)	
100-3000-30-50130	Health Insurance Expense	273,569	304,455	336,227	31,772	
100-3000-30-50140	Worker's Comp Expense	-	1,105	1,551	446	
100-3000-30-50150	Life Ins/LTD Expense	9,028	6,060	9,654	3,594	
Supplies and Fees						
100-3000-30-51000	Office Expense	3,553	2,939	7,567	4,628	
Contractual						
100-3000-30-53000	Training & Conferences	4,055	15,350	14,350	(1,000)	
100-3000-30-53300	Mileage	406	1,000	1,000	-	
Total Shared Services		1,469,910	1,601,080	1,676,435	75,355	4.7%

Division: 35 - GIS Land Records

Personnel						
100-3500-35-50000	Salaries & Wages	405,164	442,333	491,972	49,639	
100-3500-35-50050	Overtime Pay	33,380	37,923	44,373	6,450	
100-3500-35-50075	Professional Development Pay	2,250	2,250	2,250	-	
100-3500-35-50100	FICA Expense	6,180	6,996	8,219	1,223	
100-3500-35-50120	Retirement Expense	60,837	70,219	94,791	24,572	
100-3500-35-50125	Unemploy Exp (TWC)	-	819	819	-	
100-3500-35-50130	Health Insurance Expense	97,026	116,403	129,640	13,237	
100-3500-35-50140	Worker's Comp Expense	-	487	767	280	
100-3500-35-50150	Life Ins/LTD Expense	4,146	2,627	4,545	1,918	
Supplies and Fees						
100-3500-35-51000	Office Expense	46	3,230	2,000	(1,230)	
100-3500-35-52280	Other Professional Services	127,631	170,000	170,000	-	
Contractual						
100-3500-35-52320	Plats and Abstracts	200	1,483	1,483	-	
Training and Travel						
100-3500-35-53300	Mileage	-	1,000	1,000	-	
100-3500-35-53000	Training and Conferences	-	9,147	10,500	1,353	
Technology						
100-3500-35-55110	Software Enhancements	-	5,000	5,000	-	
Total GIS-Land Records		736,859	869,917	967,360	97,443	11.2%

**Fort Bend Central Appraisal District
FY26-27 Proposed Budget
Departmental Expenditure Detail**

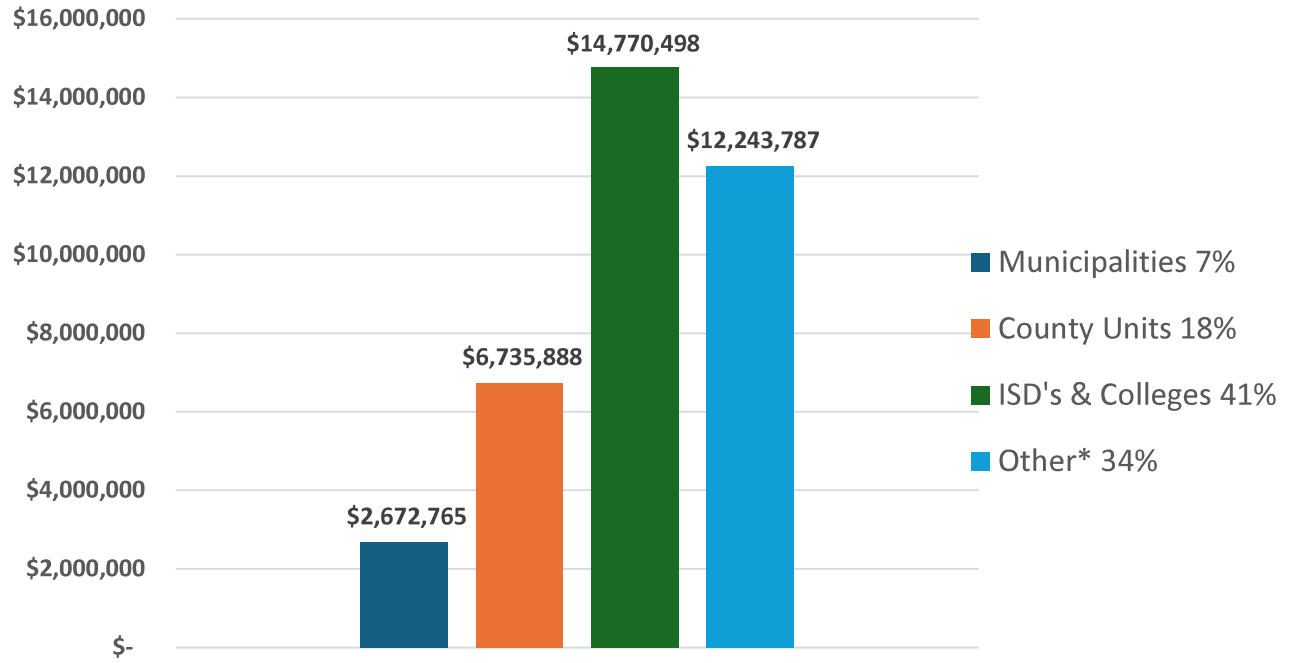
Dept/Account#	Account Title	FY25 Actual	FY26 Adopted Budget	FY27 Proposed Budget	Budget Inc (Dec) (FY26/FY27)	Inc (Dec) %
Division: 36 - GIS Development						
Personnel						
100-3500-36-50000	Salaries & Wages	413,012	463,570	569,142	105,572	
100-3500-36-50050	Overtime	7,020	10,669	15,891	5,222	
100-3500-36-50075	Professional Development Pay	3,250	3,250	3,250	-	
100-3500-36-50100	FICA Expense	5,866	6,890	8,871	1,981	
100-3500-36-50120	Retirement Expense	58,077	69,149	102,314	33,165	
100-3500-36-50125	Unemploy Exp (TWC)	-	585	702	117	
100-3500-36-50130	Health Insurance Expense	52,305	65,391	99,048	33,657	
100-3500-36-50140	Worker's Comp Expense	-	480	828	348	
100-3500-36-50150	Life Ins/LTD Expense	3,791	2,533	5,014	2,481	
Supplies and Fees						
100-3500-36-51000	Office Expense	158	250	268	18	
Contractual						
100-3500-36-52280	Other Professional Services	-	40,000	40,000	-	
100-3500-36-52370	Aerial Imagery Services	340,674	340,674	400,000	59,326	
Training and Travel						
100-3500-36-53000	Training & Conferences	28,022	25,875	34,378	8,503	
100-3500-36-53300	Mileage	213	1,000	1,070	70	
Technology						
100-3500-36-55050	New Software	-	58,435	20,000	(38,435)	
100-3500-36-55100	Software Maintenance/Subscriptions	57,669	72,300	189,288	116,988	
100-3500-36-55299	Hardware	19,681	1,200	65,200	64,000	
Total GIS-Development		989,738	1,162,251	1,555,263	393,012	33.8%
Division: 40 - Information Technology						
Personnel						
100-4000-40-50000	Salaries & Wages	540,357	672,162	654,172	(17,990)	
100-4000-40-50025	Part-Time & Seasonal Pay	-	19,200	21,760	2,560	
100-4000-40-50050	Overtime Pay	16,032	19,707	23,355	3,648	
100-4000-40-50075	Professional Development Pay	1,000	1,000	2,000	1,000	
100-4000-40-50100	FICA Expense	7,617	11,619	12,015	396	
100-4000-40-50120	Retirement Expense	76,593	99,746	117,117	17,371	
100-4000-40-50125	Unemploy Exp (TWC)	-	1,053	936	(117)	
100-4000-40-50130	Health Insurance Expense	116,658	135,196	144,471	9,275	
100-4000-40-50140	Worker's Comp Expense	-	716	982	266	
100-4000-40-50150	Life Ins/LTD Expense	4,912	3,647	6,000	2,353	
100-4000-40-50900	New Position Request	-	-	155,216	155,216	
Supplies and Fees						
100-4000-40-51000	Office Expense	4,415	4,550	350	(4,200)	
100-4000-40-51300	Copy Expense	319	-	-	-	
100-4000-40-51480	Printer Maintenance	9,393	10,800	10,800	-	
Contractual						
100-4000-40-52280	Other Professional Services	200	-	-	-	
100-4000-40-52310	Telephone/Cell/Internet	349,958	306,972	288,852	(18,120)	
100-4000-40-52360	Building/Equipment Lease	117,800	121,670	211,000	89,330	
Training and Travel						
100-4000-40-53000	Training & Conferences	14,525	23,174	19,745	(3,429)	

**Fort Bend Central Appraisal District
FY26-27 Proposed Budget
Departmental Expenditure Detail**

Dept/Account#	Account Title	FY25 Actual	FY26 Adopted Budget	FY27 Proposed Budget	Budget Inc (Dec) (FY26/FY27)	Inc (Dec) %
100-4000-40-53300	Mileage	531	1,000	1,000	-	
Building/Maintenance						
100-4000-40-54100	Building Maintenance/Custodial	6,819	15,000	5,000	(10,000)	
Technology						
100-4000-40-55050	New Software		99,300	48,000	(51,300)	
100-4000-40-55075	Batteries/Backup Equipment	6,569	205,000	5,000	(200,000)	
100-4000-40-55100	Software Maintenance/Subscriptions	323,874	449,113	557,399	108,286	
100-4000-40-55110	Tyler Orion/ATP/ERP		261,768	480,480	218,712	
100-4000-40-55140	Backup Storage	69,114	75,000	100,000	25,000	
100-4000-40-55299	Hardware/Software	325,714	218,000	99,000	(119,000)	
Capital Expenditures						
100-4000-40-55500	Equipment Replacement	447,385	612,500	612,500	-	
Total Information Technology		2,439,787	3,367,893	3,577,150	209,257	6.2%
Division: 70 - Appraisal Review Board						
Supplies and Fees						
100-7000-70-51000	Office Expense	2,849	5,000	2,500	(2,500)	
100-7000-70-51410	ARB Recognition	340	-	-	-	
100-7000-70-51466	Publications	-	-	650	650	
Contractual						
100-7000-70-52000	Professional Services	45,564	5,630	50,000	44,370	
100-7000-70-52150	Per Diem - ARB	1,000	-	-	-	
100-7000-70-52225	Security Services	13,313	22,980	13,200	(9,780)	
100-7000-70-52230	Hearings and Meetings	630,577	678,280	600,000	(78,280)	
100-7000-70-52250	Attorney Retainer Fees	-	12,000	-	(12,000)	
Training and Travel						
100-7000-70-53000	Training & Conferences	440	17,500	3,500	(14,000)	
Building/Maintenance						
100-7000-70-54000	Minor building repairs	216	-	-	-	
100-7000-70-54060	Shredding and Recycling	-	2,916	2,916	-	
100-7000-70-54100	Building Maintenance/Custodial	21,457	27,427	23,333	(4,094)	
100-7000-70-54200	Utilities (Elec, Gas, Water)	18,937	23,790	40,833	17,043	
Technology						
100-7000-70-55100	Software Maintenance/Subscriptions	-	480	-	(480)	
Other Expenditures						
100-7000-70-70000	Principle	144,670	115,926	59,834	(56,092)	
100-7000-70-70100	Interest	15,200	49,926	6,286	(43,640)	
Total Appraisal Review Board		894,563	961,855	803,052	(158,803)	-16.5%
Grand Total		25,458,144	34,784,356	36,422,938	1,638,582	4.71%

Fort Bend Central Appraisal District FY26-27 Proposed Budget Taxing Unit Allocation Summary

Taxing Unit Totals by Type
Total Budget: \$36,422,938



* Other: MUD's, LID's, WCID's, Mngt Districts and other districts.

**Fort Bend Central Appraisal District
Taxing Unit Allocation
FY26-27 Budget**

Code	Entity	FY26 Budget Allocation Based on 2024 Levy (*)	2025 Combined Total Rate	2025 Net Taxable Value as of Supplement 6	2025 Tax Levy	FY27 Percentage of Budget	FY27 Budget Allocation Based on 2025 Levy	Budget Allocation (inc/dec)	% inc (dec)
C01	City of Arcola	\$21,599	1.159483	\$317,011,214	\$3,675,691	0.1255%	\$45,713	\$24,114	111.6%
C03	City of Beasley	\$3,031	0.230918	\$88,341,788	\$203,997	0.0070%	\$2,537	(\$494)	-16.3%
C04	City of Fulshear	\$92,344	0.167903	\$5,251,951,926	\$8,818,185	0.3011%	\$109,668	\$17,324	18.8%
C05	City of Houston	\$119,428	0.519190	\$1,878,557,448	\$9,753,282	0.3330%	\$121,298	\$1,870	1.6%
C06	City of Katy	\$113,513	0.425000	\$2,264,869,916	\$9,625,697	0.3287%	\$119,711	\$6,198	5.5%
C07	City of Kendleton	\$4,872	0.829500	\$50,420,965	\$418,242	0.0143%	\$5,202	\$330	6.8%
C08	City of Meadows Place	\$55,950	0.943640	\$493,199,752	\$4,654,030	0.1589%	\$57,880	\$1,930	3.5%
C09	City of Missouri City	\$827,500	0.570825	\$12,297,239,881	\$70,195,720	2.3968%	\$872,997	\$45,497	5.5%
C11	City of Needville	\$15,686	0.435508	\$322,660,016	\$1,405,210	0.0480%	\$17,476	\$1,790	11.4%
C13	City of Orchard	\$1,837	0.368457	\$42,670,749	\$157,223	0.0054%	\$1,955	\$118	6.4%
C14	Village of Pleak	\$3,199	0.250000	\$113,068,456	\$282,671	0.0097%	\$3,515	\$316	9.9%
C15	City of Richmond	\$85,448	0.630000	\$1,077,076,475	\$6,785,582	0.2317%	\$84,390	(\$1,058)	-1.2%
C17	City of Rosenberg	\$183,685	0.300000	\$4,873,246,334	\$14,619,739	0.4992%	\$181,820	(\$1,865)	-1.0%
C18	City of Simonton	\$3,616	0.281183	\$125,438,075	\$352,711	0.0120%	\$4,387	\$771	21.3%
C21	City of Sugar Land	\$931,874	0.358827	\$21,896,144,478	\$78,569,278	2.6827%	\$977,136	\$45,262	4.9%
C41	City of Pearland	\$64,249	0.630000	\$856,139,530	\$5,393,679	0.1842%	\$67,079	\$2,830	4.4%
D01	Fort Bend County Drainage District	\$148,260	0.010000	\$127,472,910,940	\$12,747,291	0.4353%	\$158,533	\$10,273	6.9%
G01	Fort Bend County	\$6,156,507	0.412000	\$128,366,540,941	\$528,870,149	18.0583%	\$6,577,355	\$420,848	6.8%
J01	Wharton Co Junior College	\$44,920	0.140000	\$2,864,959,625	\$4,010,943	0.1370%	\$49,883	\$4,963	11.0%
J03	Houston Community College	\$171,448	0.098802	\$4,979,778,910	\$4,920,121	0.1680%	\$61,190	(\$110,258)	-64.3%
M02	Fort Bend MUD # 50	\$115,304	0.850000	\$1,179,579,755	\$10,026,428	0.3424%	\$124,695	\$9,391	8.1%
M03	Plantation MUD	\$20,486	0.490000	\$346,749,324	\$1,699,072	0.0580%	\$21,131	\$645	3.1%
M107	Fort Bend MUD # 81	\$35,408	0.361000	\$878,114,430	\$3,169,993	0.1082%	\$39,424	\$4,016	11.3%
M108	Cinco MUD # 1	\$11,510	0.355000	\$281,325,942	\$998,707	0.0341%	\$12,421	\$911	7.9%
M109	Cinco MUD # 2	\$24,582	0.220000	\$850,113,387	\$1,870,249	0.0639%	\$23,260	(\$1,322)	-5.4%
M110	Cinco MUD # 3	\$7,851	0.250000	\$277,146,420	\$692,866	0.0237%	\$8,617	\$766	9.8%
M112	Cinco MUD # 5	\$11,436	0.300000	\$316,851,903	\$950,556	0.0325%	\$11,822	\$386	3.4%
M113	Cinco MUD # 6	\$9,122	0.280000	\$263,983,672	\$739,154	0.0252%	\$9,193	\$71	0.8%
M114	Cinco MUD # 7	\$19,107	0.224200	\$691,113,162	\$1,549,476	0.0529%	\$19,270	\$163	0.9%
M115	Cinco MUD # 8	\$21,188	0.370000	\$480,821,749	\$1,779,040	0.0607%	\$22,125	\$937	4.4%
M116	Cinco MUD # 9	\$11,394	0.294200	\$323,011,310	\$950,299	0.0324%	\$11,819	\$425	3.7%
M120	Grand Lakes MUD # 1	\$28,778	0.452870	\$550,439,898	\$2,492,777	0.0851%	\$31,002	\$2,224	7.7%
M121	Grand Lakes MUD # 2	\$7,098	0.134542	\$461,259,087	\$620,587	0.0212%	\$7,718	\$620	8.7%
M123	Grand Lakes MUD # 4	\$29,836	0.425000	\$598,288,914	\$2,542,728	0.0868%	\$31,623	\$1,787	6.0%
M125	Grand Mission MUD # 1	\$45,071	0.547000	\$676,118,365	\$3,698,367	0.1263%	\$45,995	\$924	2.1%
M136	Fort Bend MUD # 94	\$8,393	0.340000	\$213,769,849	\$726,817	0.0248%	\$9,039	\$646	7.7%
M139	Cinco MUD # 10	\$23,216	0.450000	\$446,378,497	\$2,008,703	0.0686%	\$24,981	\$1,765	7.6%
M141	Cinco MUD # 12	\$13,873	0.205000	\$569,083,859	\$1,166,622	0.0398%	\$14,509	\$636	4.6%
M143	Cinco MUD # 14	\$43,293	0.423800	\$876,258,920	\$3,713,585	0.1268%	\$46,184	\$2,891	6.7%
M150	Willow Point MUD	\$53,437	1.250000	\$377,627,167	\$4,720,340	0.1612%	\$58,705	\$5,268	9.9%
M16	First Colony MUD # 9	\$17,724	0.110000	\$1,188,681,823	\$1,307,550	0.0446%	\$16,261	(\$1,463)	-8.3%
M162	Harris-Fort Bend MUD # 5	\$29,971	0.350000	\$715,112,628	\$2,502,894	0.0855%	\$31,128	\$1,157	3.9%
M163	West Harris County MUD 4	\$2,340	0.854000	\$23,236,050	\$198,436	0.0068%	\$2,468	\$128	5.5%
M166	Sienna MUD 3	\$57,625	0.397500	\$1,192,768,610	\$4,741,255	0.1619%	\$58,965	\$1,340	2.3%
M167	Sienna MUD 4	\$133,895	0.935000	\$1,204,676,602	\$11,263,726	0.3846%	\$140,083	\$6,188	4.6%
M169	Sienna MUD 6	\$101,934	1.050000	\$1,048,560,966	\$11,009,890	0.3759%	\$136,926	\$34,992	34.3%
M17	Meadow Creek MUD	\$6,340	0.230900	\$223,508,825	\$516,082	0.0176%	\$6,418	\$78	1.2%
M170	Fort Bend MUD #116	\$68,696	0.720000	\$800,352,782	\$5,762,540	0.1968%	\$71,666	\$2,970	4.3%
M171	Fort Bend MUD #115	\$16,312	0.310000	\$411,459,915	\$1,275,526	0.0436%	\$15,863	(\$449)	-2.8%
M172	Fort Bend MUD #118	\$48,356	0.570000	\$709,904,405	\$4,046,455	0.1382%	\$50,324	\$1,968	4.1%
M174	Fort Bend MUD #121	\$57,817	1.005000	\$440,285,466	\$4,424,869	0.1511%	\$55,030	(\$2,787)	-4.8%
M175	Fort Bend MUD #119	\$28,067	0.385000	\$551,090,095	\$2,121,697	0.0724%	\$26,387	(\$1,680)	-6.0%
M177	Cimarron MUD	\$2,247	0.300000	\$59,098,777	\$177,296	0.0061%	\$2,205	(\$42)	-1.9%
M178	Fort Bend MUD #122	\$39,302	0.840000	\$379,710,593	\$3,189,569	0.1089%	\$39,667	\$365	0.9%
M179	Fort Bend MUD #123	\$54,359	0.825000	\$521,743,809	\$4,304,386	0.1470%	\$53,532	(\$827)	-1.5%
M180	Fort Bend MUD #124	\$31,290	0.752000	\$358,355,439	\$2,694,833	0.0920%	\$33,515	\$2,225	7.1%
M181	Fort Bend MUD #132	\$61,067	1.500000	\$344,432,257	\$5,166,484	0.1764%	\$64,254	\$3,187	5.2%
M182	Fort Bend MUD #133	\$136,815	1.200000	\$954,882,433	\$11,458,589	0.3913%	\$142,506	\$5,691	4.2%
M183	Fort Bend MUD #130	\$20,840	0.385000	\$449,586,981	\$1,730,910	0.0591%	\$21,527	\$687	3.3%
M183A	Ft Bend MUD 130 Defined Area	\$10,682	0.665000	\$132,474,263	\$880,954	0.0301%	\$10,956	\$274	2.6%
M185	Woodcreek Reserve MUD	\$17,774	0.370000	\$367,436,909	\$1,359,517	0.0464%	\$16,908	(\$866)	-4.9%
M186	Sienna MUD 12	\$69,812	0.495000	\$1,107,548,671	\$5,482,366	0.1872%	\$68,182	(\$1,630)	-2.3%
M187	Fort Bend MUD #140	\$32,023	0.790000	\$328,153,154	\$2,592,410	0.0885%	\$32,241	\$218	0.7%
M188	Fort Bend MUD #129	\$22,121	0.180000	\$1,005,194,775	\$1,809,351	0.0618%	\$22,502	\$381	1.7%
M189	Sienna MUD 10	\$72,383	0.710000	\$1,030,471,940	\$7,316,351	0.2498%	\$90,991	\$18,608	25.7%
M19	North Mission Glen MUD	\$34,190	0.360000	\$803,737,012	\$2,893,453	0.0988%	\$35,985	\$1,795	5.2%

**Fort Bend Central Appraisal District
Taxing Unit Allocation
FY26-27 Budget**

Code	Entity	FY26 Budget Allocation Based on 2024 Levy (*)	2025 Combined Total Rate	2025 Net Taxable Value as of Supplement 6	2025 Tax Levy	FY27 Percentage of Budget	FY27 Budget Allocation Based on 2025 Levy	Budget Allocation (inc/dec)	% inc (dec)
M190	Fort Bend MUD #143	\$125,054	1.060000	\$1,004,826,451	\$10,651,160	0.3637%	\$132,464	\$7,410	5.9%
M191	Fort Bend MUD #146	\$75,831	0.635000	\$990,664,390	\$6,290,719	0.2148%	\$78,235	\$2,404	3.2%
M192	Fort Bend MUD #142	\$113,874	0.618000	\$1,558,416,901	\$9,631,016	0.3289%	\$119,777	\$5,903	5.2%
M193	Fort Bend MUD #144	\$46,101	0.540000	\$689,295,434	\$3,722,195	0.1271%	\$46,292	\$191	0.4%
M194	Brazoria-Fort Bend Co MUD # 1	\$35,591	0.420000	\$717,372,053	\$3,012,963	0.1029%	\$37,471	\$1,880	5.3%
M195	Fort Bend MUD #131	\$29,488	0.850000	\$281,414,323	\$2,392,022	0.0817%	\$29,749	\$261	0.9%
M196	Fort Bend MUD #141	\$35,921	1.010000	\$310,678,281	\$3,137,851	0.1071%	\$39,024	\$3,103	8.6%
M197	First Colony MUD #10	\$9,249	0.115000	\$604,513,607	\$695,191	0.0237%	\$8,646	(\$603)	-6.5%
M198	Fort Bend MUD #147	\$20,723	0.871800	\$198,507,656	\$1,730,590	0.0591%	\$21,523	\$800	3.9%
*M198A	Fort Bend County MUD 147 Defined Area	\$0	0.308200	\$13,824,066	\$4,260,577	0.1455%	\$52,987	\$52,987	100.0%
M199	Fort Bend MUD #148	\$5,917	0.440000	\$114,201,881	\$502,488	0.0172%	\$6,249	\$332	5.6%
M20	Fort Bend MUD # 57	\$81,765	0.726000	\$986,389,315	\$7,161,186	0.2445%	\$89,061	\$7,296	8.9%
M201	Fort Bend MUD #151	\$168,194	0.720000	\$1,855,393,439	\$13,358,833	0.4561%	\$166,139	(\$2,055)	-1.2%
M204	Fort Bend MUD #136	\$8,236	0.345000	\$181,502,167	\$626,182	0.0214%	\$7,788	(\$448)	-5.4%
M205	Fort Bend MUD #137	\$28,280	0.170000	\$1,085,223,557	\$1,844,880	0.0630%	\$22,944	(\$5,336)	-18.9%
M206	Fort Bend MUD #138	\$33,230	0.210000	\$1,244,497,995	\$2,613,446	0.0892%	\$32,502	(\$728)	-2.2%
M207	Fort Bend MUD #139	\$12,143	0.240000	\$363,384,821	\$872,124	0.0298%	\$10,846	(\$1,297)	-10.7%
M208	Fort Bend MUD #152	\$63,089	1.130000	\$520,249,172	\$5,878,816	0.2007%	\$73,113	\$10,024	15.9%
M209	Fort Bend MUD #155	\$62,474	0.860000	\$604,920,928	\$5,202,320	0.1776%	\$64,699	\$2,225	3.6%
M21	Pecan Grove MUD	\$118,821	0.625000	\$1,621,727,967	\$10,135,800	0.3461%	\$126,055	\$7,234	6.1%
M210	Fort Bend MUD #158	\$26,150	0.930000	\$228,935,480	\$2,129,100	0.0727%	\$26,479	\$329	1.3%
M211	Cinco Southwest MUD # 1	\$1,574	0.370000	\$32,940,968	\$121,882	0.0042%	\$1,516	(\$58)	-3.7%
M212	Cinco Southwest MUD # 2	\$92,650	0.595000	\$1,227,024,800	\$7,300,798	0.2493%	\$90,797	(\$1,853)	-2.0%
M213	Fort Bend MUD #165	\$62,717	0.900000	\$574,004,612	\$5,166,042	0.1764%	\$64,248	\$1,531	2.4%
M214A	Fort Bend County MUD 168 Def. Area A	\$8,624	1.500000	\$77,411,091	\$1,161,166	0.0396%	\$14,441	\$5,817	67.5%
M215	Fort Bend MUD #162	\$59,318	1.100000	\$539,609,049	\$5,935,700	0.2027%	\$73,820	\$14,502	24.4%
M216	Grand Mission MUD # 2	\$67,468	0.720000	\$785,809,134	\$5,657,826	0.1932%	\$70,364	\$2,896	4.3%
M217	Fort Bend MUD #159	\$9,445	0.650000	\$123,481,709	\$802,631	0.0274%	\$9,982	\$537	5.7%
M218	Fort Bend MUD #167	\$32,659	0.490000	\$534,965,660	\$2,621,332	0.0895%	\$32,600	(\$59)	-0.2%
M22	Fort Bend MUD # 58	\$182,907	0.730000	\$2,165,341,804	\$15,806,995	0.5397%	\$196,586	\$13,679	7.5%
M221	Fort Bend MUD #128	\$89,029	0.250000	\$2,962,350,616	\$7,405,877	0.2529%	\$92,104	\$3,075	3.5%
M222	Fort Bend MUD #161	\$27,038	0.780000	\$283,087,494	\$2,208,082	0.0754%	\$27,461	\$423	1.6%
M223	Cinco Southwest MUD # 3	\$74,262	0.605000	\$988,913,747	\$5,982,928	0.2043%	\$74,407	\$145	0.2%
M224	Cinco Southwest MUD # 4	\$82,241	0.550000	\$1,185,371,164	\$6,519,541	0.2226%	\$81,081	(\$1,160)	-1.4%
M225	Fort Bend MUD #145	\$13,965	1.036640	\$100,062,113	\$1,037,284	0.0354%	\$12,900	(\$1,065)	-7.6%
M226	Fort Bend MUD #182	\$177,085	1.070000	\$1,337,700,330	\$14,313,394	0.4887%	\$178,010	\$925	0.5%
M227	Fort Bend MUD #176	\$20,547	0.535000	\$364,136,489	\$1,948,130	0.0665%	\$24,228	\$3,681	17.9%
M228	Fort Bend MUD #185	\$49,917	0.770000	\$503,273,180	\$3,875,203	0.1323%	\$48,194	(\$1,723)	-3.5%
M23	Blueridge West MUD	\$26,745	0.402500	\$544,880,157	\$2,193,143	0.0749%	\$27,275	\$530	2.0%
M230	Fort Bend MUD #169	\$46,248	1.338380	\$446,167,642	\$5,971,418	0.2039%	\$74,264	\$28,016	60.6%
M231	Fort Bend MUD #170	\$101,079	0.940000	\$909,463,264	\$8,548,955	0.2919%	\$106,320	\$5,241	5.2%
M232	Fort Bend MUD #171	\$55,057	0.840000	\$528,487,607	\$4,439,296	0.1516%	\$55,210	\$153	0.3%
M233	Fort Bend MUD #172	\$105,437	0.800000	\$1,162,269,425	\$9,298,155	0.3175%	\$115,638	\$10,201	9.7%
M234	Fort Bend MUD #173	\$82,431	0.970000	\$693,033,179	\$6,722,422	0.2295%	\$83,604	\$1,173	1.4%
M235	Fort Bend MUD #149	\$36,783	0.315000	\$957,226,339	\$3,015,263	0.1030%	\$37,500	\$717	1.9%
M236	Fort Bend MUD #163	\$14,662	0.600000	\$191,077,041	\$1,146,462	0.0391%	\$14,258	(\$404)	-2.8%
M237	Ft Bend MUD #189	\$14,459	1.500000	\$92,699,353	\$1,390,490	0.0475%	\$17,293	\$2,834	19.6%
M238	Fort Bend MUD #194	\$91,825	1.040000	\$722,725,053	\$7,516,341	0.2566%	\$93,478	\$1,653	1.8%
M239	Willow Creek Farms MUD	\$9,019	1.150000	\$62,196,210	\$715,256	0.0244%	\$8,895	(\$124)	-1.4%
M242	Fort Bend MUD #134 B	\$176,049	0.965000	\$1,635,518,528	\$15,782,754	0.5389%	\$196,284	\$20,235	11.5%
M243	Fort Bend MUD #134 C	\$147,751	0.950000	\$1,303,778,052	\$12,385,891	0.4229%	\$154,039	\$6,288	4.3%
M244	Imperial Redevelopment District	\$62,976	0.970000	\$544,605,805	\$5,282,676	0.1804%	\$65,699	\$2,723	4.3%
M245	Fulshear MUD # 1	\$59,114	0.840000	\$693,366,821	\$5,824,281	0.1989%	\$72,434	\$13,320	22.5%
M246	Fort Bend MUD #187	\$38,199	0.580000	\$550,617,671	\$3,193,582	0.1090%	\$39,717	\$1,518	4.0%
M248	Ft Bend MUD 190	\$69,808	1.070000	\$520,482,637	\$5,569,164	0.1902%	\$69,262	(\$546)	-0.8%
M25	Thunderbird MUD	\$10,869	0.126700	\$674,636,224	\$854,764	0.0292%	\$10,630	(\$239)	-2.2%
M251	Fort Bend MUD #195	\$4,362	1.500000	\$47,053,947	\$705,809	0.0241%	\$8,778	\$4,416	101.2%
M252	Fort Bend MUD #198	\$36,057	1.500000	\$310,870,197	\$4,663,053	0.1592%	\$57,993	\$21,936	60.8%
M253	Fort Bend MUD #199	\$6,799	0.750000	\$97,272,945	\$729,547	0.0249%	\$9,073	\$2,274	33.4%
M254	Fort Bend MUD #200	\$10,054	1.030000	\$81,620,935	\$840,696	0.0287%	\$10,455	\$401	4.0%
M255	Fort Bend MUD #192	\$19,985	1.280000	\$122,672,223	\$1,570,204	0.0536%	\$19,528	(\$457)	-2.3%
M260	Katy West Mud	\$6,910	0.800000	\$83,205,897	\$665,647	0.0227%	\$8,278	\$1,368	19.8%
M261	Harris County MUD #393	\$1,227	0.370000	\$29,077,341	\$107,586	0.0037%	\$1,338	\$111	9.0%
M262	Fort Bend MUD #156	\$26,411	0.790000	\$286,701,704	\$2,264,943	0.0773%	\$28,168	\$1,757	6.7%
M263	Fort Bend MUD #206	\$35,950	1.220000	\$238,636,883	\$2,911,370	0.0994%	\$36,208	\$258	0.7%
M264	Fulshear MUD # 2	\$27,299	1.080000	\$208,984,323	\$2,257,031	0.0771%	\$28,070	\$771	2.8%

**Fort Bend Central Appraisal District
Taxing Unit Allocation
FY26-27 Budget**

Code	Entity	FY26 Budget Allocation Based on 2024 Levy (*)	2025 Combined Total Rate	2025 Net Taxable Value as of Supplement 6	2025 Tax Levy	FY27 Percentage of Budget	FY27 Budget Allocation Based on 2025 Levy	Budget Allocation (inc/dec)	% inc (dec)
M266	Fort Bend MUD #184	\$64,384	1.460000	\$470,930,494	\$6,875,585	0.2348%	\$85,509	\$21,125	32.8%
M27	Quail Valley MUD	\$18,537	0.127000	\$1,138,721,230	\$1,446,176	0.0494%	\$17,986	(\$551)	-3.0%
M273	Fort Bend MUD #207	\$11,156	1.000000	\$121,499,416	\$1,214,994	0.0415%	\$15,110	\$3,954	35.4%
M274	Fort Bend MUD #188	\$38,743	1.170000	\$285,237,255	\$3,337,276	0.1140%	\$41,504	\$2,761	7.1%
M275	Fort Bend-Waller MUD # 3	\$42,504	0.850000	\$415,255,042	\$3,529,668	0.1205%	\$43,897	\$1,393	3.3%
M276	Brazoria MUD # 22	\$11,822	0.950000	\$94,038,313	\$893,364	0.0305%	\$11,110	(\$712)	-6.0%
M277	Fort Bend MUD #215	\$68,158	0.730000	\$764,420,065	\$5,580,266	0.1905%	\$69,400	\$1,242	1.8%
M278	Fort Bend MUD #134 D	\$99,956	0.900000	\$1,022,658,582	\$9,203,927	0.3143%	\$114,466	\$14,510	14.5%
M279	Ft Bend MUD #134 E	\$58,037	0.850000	\$577,136,308	\$4,905,659	0.1675%	\$61,010	\$2,973	5.1%
M284	Fort Bend MUD #216	\$8,137	1.350000	\$143,383,586	\$1,935,678	0.0661%	\$24,073	\$15,936	195.8%
M285	Ft Bend MUD #218	\$36,385	1.177500	\$252,800,379	\$2,976,724	0.1016%	\$37,020	\$635	1.7%
M287	Fulshear MUD # 3A	\$129,161	1.120000	\$1,158,840,098	\$12,979,009	0.4432%	\$161,415	\$32,254	25.0%
M289	WILLIAMS RANCH MUD 1	\$12,131	0.950000	\$96,523,009	\$916,969	0.0313%	\$11,404	(\$727)	-6.0%
M29	Fort Bend MUD # 2	\$35,201	0.533000	\$518,910,547	\$2,765,793	0.0944%	\$34,397	(\$804)	-2.3%
M290	Ft Bend MUD 174	\$33,479	1.040000	\$257,264,036	\$2,675,546	0.0914%	\$33,275	(\$204)	-0.6%
M291	Ft Bend MUD 220	\$41,839	1.390000	\$244,529,554	\$3,398,961	0.1161%	\$42,272	\$433	1.0%
*M292	Fort Bend MUD 157	\$0	1.500000	\$22,849,654	\$34,274,481	1.1703%	\$426,259	\$426,259	100.0%
M293	Charleston MUD	\$13,840	1.500000	\$109,333,649	\$1,640,005	0.0560%	\$20,396	\$6,556	47.4%
M294	Fort Bend MUD # 222	\$32,925	1.170000	\$433,040,366	\$5,066,572	0.1730%	\$63,011	\$30,086	91.4%
M295	Fort Bend MUD # 225	\$12,644	1.085000	\$105,483,527	\$1,144,496	0.0391%	\$14,234	\$1,590	12.6%
M296	Village at Katy Dev District	\$11,042	1.000000	\$86,851,781	\$868,518	0.0297%	\$10,801	(\$241)	-2.2%
M297	Fort Bend MUD # 233	\$22,612	0.900000	\$209,898,787	\$1,889,089	0.0645%	\$23,494	\$882	3.9%
M299	Fort Bend MUD # 229	\$55,615	1.350000	\$498,304,242	\$6,727,107	0.2297%	\$83,662	\$28,047	50.4%
M30	Fort Bend MUD # 5	\$69,827	1.240000	\$515,175,333	\$6,388,174	0.2181%	\$79,447	\$9,620	13.8%
M300	Brazoria-Fort Bend Co MUD # 3	\$67,358	1.350000	\$495,885,230	\$6,694,451	0.2286%	\$83,256	\$15,898	23.6%
M302	Fort Bend MUD 239 A	\$520	1.500000	\$1,761,583	\$26,424	0.0009%	\$329	(\$191)	-36.8%
*M308	Fort Bend MUD 231	\$0	1.500000	\$154,136	\$231,204	0.0079%	\$2,875	\$2,875	100.0%
M309	Fort Bend MUD 246	\$3,026	1.300000	\$92,047,274	\$1,196,615	0.0409%	\$14,882	\$11,856	391.8%
M310	Fort Bend MUD #251	\$2,393	1.500000	\$29,430,006	\$441,450	0.0151%	\$5,490	\$3,097	129.4%
M311	Fort Bend MUD #175	\$13,157	1.150000	\$199,599,244	\$2,295,391	0.0784%	\$28,547	\$15,390	117.0%
M312	Fort Bend MUD 254	\$873	1.100000	\$18,272,081	\$200,993	0.0069%	\$2,500	\$1,627	186.3%
M313	Fort Bend MUD #245	\$8,930	1.300000	\$81,833,237	\$1,063,832	0.0363%	\$13,230	\$4,300	48.2%
M315	Fort Bend MUD #250 A	\$6,743	1.500000	\$125,111,026	\$1,876,665	0.0641%	\$23,339	\$16,596	246.1%
M319	Fort Bend County MUD 256	\$459	1.500000	\$28,097,296	\$421,459	0.0144%	\$5,242	\$4,783	1041.9%
*M320	Fort Bend MUD 257	\$0	1.500000	\$2,143,855	\$3,215,783	0.1098%	\$39,993	\$39,993	100.0%
M325	Fort Bend MUD 255	\$4,101	1.250000	\$144,167,495	\$1,802,094	0.0615%	\$22,412	\$18,311	446.5%
M326	Fort Bend MUD #232	\$5,640	0.880000	\$132,533,823	\$1,166,298	0.0398%	\$14,505	\$8,865	157.2%
*M327	Fort Bend County MUD 253	\$0	1.500000	\$33,404,141	\$50,106,212	1.7109%	\$623,152	\$623,152	100.0%
*M328	Fort Bend MUD 252	\$0	1.100000	\$5,100,709	\$5,610,780	0.1916%	\$69,779	\$69,779	100.0%
M332	Fort Bend MUD 134F	\$3,945	1.450000	\$108,808,306	\$1,577,720	0.0539%	\$19,622	\$15,677	397.4%
M334	Fort Bend MUD 258	\$1,510	1.500000	\$22,558,737	\$338,381	0.0116%	\$4,208	\$2,698	178.7%
*M342	Fort Bend County MUD 268	\$0	1.500000	\$6,969,487	\$10,454,230	0.3570%	\$130,015	\$130,015	100.0%
*M346	Fort Bend County MUD 269A	\$0	1.500000	\$5,251,067	\$7,876,600	0.2689%	\$97,958	\$97,958	100.0%
*M347	Fort Bend County MUD 269B	\$0	1.500000	\$17,292,284	\$25,938,426	0.8857%	\$322,586	\$322,586	100.0%
M37	Fort Bend MUD # 19	\$9,013	0.616000	\$116,604,145	\$718,282	0.0245%	\$8,933	(\$80)	-0.9%
*M374	Fort Bend County MUD 242	\$0	1.500000	\$2,777,716	\$4,166,574	0.1423%	\$51,818	\$51,818	100.0%
M40	Fort Bend MUD # 23	\$85,802	0.560000	\$1,278,642,786	\$7,160,400	0.2445%	\$89,051	\$3,249	3.8%
M41	Fort Bend MUD # 25	\$168,047	0.830000	\$1,756,113,134	\$14,575,739	0.4977%	\$181,273	\$13,226	7.9%
M42	Fort Bend MUD # 24	\$43,939	1.160000	\$322,825,530	\$3,744,776	0.1279%	\$46,572	\$2,633	6.0%
M43	Fort Bend MUD # 26	\$41,984	0.705020	\$530,990,436	\$3,743,589	0.1278%	\$46,558	\$4,574	10.9%
M44	Fort Bend MUD # 35	\$48,176	0.322600	\$1,244,613,037	\$4,015,122	0.1371%	\$49,935	\$1,759	3.7%
M48	Fort Bend MUD # 41	\$21,573	0.426000	\$404,745,288	\$1,724,215	0.0589%	\$21,443	(\$130)	-0.6%
M49	Fort Bend MUD # 30	\$99,413	0.410000	\$1,957,852,516	\$8,027,195	0.2741%	\$99,831	\$418	0.4%
M50	Fort Bend MUD # 47	\$30,492	0.693000	\$363,247,566	\$2,517,306	0.0860%	\$31,307	\$815	2.7%
M52	Fort Bend MUD # 34	\$47,077	0.550000	\$700,735,106	\$3,854,043	0.1316%	\$47,931	\$854	1.8%
M53	Fort Bend MUD # 37	\$13,815	0.472500	\$250,230,250	\$1,182,338	0.0404%	\$14,704	\$889	6.4%
M54	Fort Bend MUD # 48	\$55,817	0.720000	\$643,267,758	\$4,631,528	0.1581%	\$57,601	\$1,784	3.2%
M55	Fort Bend MUD # 42	\$19,958	0.290000	\$572,421,789	\$1,660,023	0.0567%	\$20,645	\$687	3.4%
M58	Fort Bend MUD # 49	\$7,337	0.510000	\$121,372,928	\$619,002	0.0211%	\$7,698	\$361	4.9%
M62	Big Oaks MUD	\$48,133	0.585000	\$669,273,270	\$3,915,249	0.1337%	\$48,692	\$559	1.2%
M73	Chelford City MUD	\$12,783	0.313000	\$323,155,521	\$1,011,477	0.0345%	\$12,579	(\$204)	-1.6%
M75	Cornerstone MUD	\$2,831	0.257500	\$94,443,900	\$243,193	0.0083%	\$3,024	\$193	6.8%
M76	Fort Bend MUD # 66	\$5,016	0.950000	\$45,446,889	\$431,745	0.0147%	\$5,369	\$353	7.0%
M77	Kingsbridge MUD	\$47,098	0.380000	\$937,952,179	\$3,564,218	0.1217%	\$44,327	(\$2,771)	-5.9%
M81	Mission Bend MUD # 1	\$9,363	0.217000	\$336,616,943	\$730,459	0.0249%	\$9,084	(\$279)	-3.0%
M83	Palmer Plantation MUD # 1	\$14,591	0.400000	\$307,544,507	\$1,230,178	0.0420%	\$15,299	\$708	4.9%

**Fort Bend Central Appraisal District
Taxing Unit Allocation
FY26-27 Budget**

Code	Entity	FY26 Budget Allocation Based on 2024 Levy (*)	2025 Combined Total Rate	2025 Net Taxable Value as of Supplement 6	2025 Tax Levy	FY27 Percentage of Budget	FY27 Budget Allocation Based on 2025 Levy	Budget Allocation (inc/dec)	% inc (dec)
M84	Palmer Plantation MUD # 2	\$13,399	0.366000	\$307,669,973	\$1,126,072	0.0384%	\$14,005	\$606	4.5%
M87	Renn Road M.U.D.	\$7,440	0.540000	\$109,386,038	\$590,685	0.0202%	\$7,346	(\$94)	-1.3%
M89	Harris-Fort Bend MUD # 1	\$31,401	0.543600	\$465,678,582	\$2,531,429	0.0864%	\$31,482	\$81	0.3%
M91	Harris-Fort Bend MUD # 3	\$887	0.545000	\$14,256,736	\$77,699	0.0027%	\$966	\$79	8.9%
M92	Katy Management District #1	\$53,804	0.800000	\$543,955,132	\$4,351,641	0.1486%	\$54,120	\$316	0.6%
M94	Memorial MUD	\$2.00	0.325000	\$11,615	\$38	0.0000%	\$0.47	(\$1.53)	-76.5%
M95	Sienna MUD 7	\$3,930	1.050000	\$44,623,473	\$468,546	0.0160%	\$5,827	\$1,897	48.3%
M96	Fort Bend MUD # 46	\$18,803	0.340000	\$445,754,636	\$1,515,566	0.0517%	\$18,849	\$46	0.2%
M98	Burney Road MUD	\$10,203	0.175000	\$494,214,669	\$864,876	0.0295%	\$10,756	\$553	5.4%
R05	Fort Bend ESD # 4	\$223,196	0.096628	\$20,608,545,848	\$19,913,626	0.6800%	\$247,658	\$24,462	11.0%
R07	Fort Bend ESD # 3	\$6,964	0.100000	\$554,604,921	\$554,605	0.0189%	\$6,897	(\$67)	-1.0%
R33	Harris-Fort Bend ESD #100	\$79,473	0.100000	\$7,731,361,734	\$7,731,362	0.2640%	\$96,152	\$16,679	21.0%
R37	Fort Bend ESD # 1	\$4,864	0.065659	\$654,324,427	\$429,623	0.0147%	\$5,343	\$479	9.8%
R41	Fort Bend ESD # 2	\$121,385	0.095749	\$11,214,616,709	\$10,737,883	0.3666%	\$133,543	\$12,158	10.0%
R50	Fort Bend ESD # 5	\$109,891	0.100000	\$10,167,208,572	\$10,167,209	0.3472%	\$126,446	\$16,555	15.1%
R51	Fort Bend ESD # 6	\$15,260	0.100000	\$1,503,098,494	\$1,503,098	0.0513%	\$18,693	\$3,433	22.5%
R52	Fort Bend ESD # 7	\$53,432	0.098479	\$4,730,327,955	\$4,658,380	0.1591%	\$57,934	\$4,502	8.4%
R53	Fort Bend ESD # 8	\$8,542	0.100000	\$847,486,394	\$847,486	0.0289%	\$10,540	\$1,998	23.4%
R54	Fort Bend ESD # 9	\$20,252	0.096725	\$1,799,088,247	\$1,740,168	0.0594%	\$21,642	\$1,390	6.9%
R55	Fort Bend ESD 10	\$6,437	0.096400	\$575,108,054	\$554,404	0.0189%	\$6,895	\$458	7.1%
S01	Lamar C.I.S.D.	\$4,497,892	1.146900	\$28,535,424,445	\$327,272,783	11.1747%	\$4,070,166	(\$427,726)	-9.5%
S03	Brazos I.S.D.	\$78,430	0.923770	\$614,144,173	\$5,673,280	0.1937%	\$70,556	(\$7,874)	-10.0%
S05	Needville ISD	\$329,334	1.286900	\$1,873,400,193	\$24,108,787	0.8232%	\$299,832	(\$29,502)	-9.0%
S07	Fort Bend I.S.D.	\$7,517,963	1.056900	\$51,935,673,648	\$548,908,135	18.7425%	\$6,826,560	(\$691,403)	-9.2%
S11	Stafford M.S.D.	\$544,659	1.002121	\$4,306,162,792	\$43,152,962	1.4735%	\$536,677	(\$7,982)	-1.5%
S13	Katy I.S.D.	\$3,147,288	1.117100	\$20,554,569,898	\$229,615,100	7.8402%	\$2,855,635	(\$291,653)	-9.3%
SM100	Fort Bend Mun Management Dist # 1	\$72,114	0.390000	\$1,604,033,698	\$6,255,731	0.2136%	\$77,800	\$5,686	7.9%
SM105	Sienna Management District 1	\$56,077	0.920000	\$439,127,269	\$4,039,971	0.1379%	\$50,244	(\$5,833)	-10.4%
SM107	Missouri City Management #1	\$47,882	0.900000	\$435,026,655	\$3,915,240	0.1337%	\$48,692	\$810	1.7%
SM108	Missouri City Management #2	\$20,062	0.500000	\$374,553,130	\$1,872,766	0.0639%	\$23,291	\$3,229	16.1%
SM110	Arcola Mun Management Dist 1	\$8,719	0.840000	\$128,034,257	\$1,075,488	0.0367%	\$13,375	\$4,656	53.4%
W01	Fort Bend LID # 2	\$93,965	0.118000	\$6,550,780,853	\$7,729,921	0.2639%	\$96,134	\$2,169	2.3%
W03	Fort Bend W.C.I.D. # 2	\$180,140	0.212500	\$7,125,012,308	\$15,140,651	0.5170%	\$188,298	\$8,158	4.5%
W03A	Ft Bend WCID 2 Area 1	\$27,576	0.515000	\$487,979,051	\$2,513,092	0.0858%	\$31,254	\$3,678	13.3%
W05	Sienna Parks & LID	\$356,590	0.412500	\$7,561,823,952	\$31,192,524	1.0651%	\$387,929	\$31,339	8.8%
W06	Fort Bend LID # 6	\$53,132	0.330000	\$1,345,125,960	\$4,438,916	0.1516%	\$55,205	\$2,073	3.9%
W07	First Colony LID	\$26,095	0.100000	\$1,963,496,328	\$1,963,496	0.0670%	\$24,419	(\$1,676)	-6.4%
W13	Fort Bend LID # 7	\$85,581	0.322740	\$2,243,457,779	\$7,240,536	0.2472%	\$90,048	\$4,467	5.2%
W16	Fort Bend LID #12	\$19,455	0.040000	\$3,636,156,145	\$1,454,462	0.0497%	\$18,089	(\$1,366)	-7.0%
W18	Grand Lakes W.C.I.D	\$12,817	0.052500	\$2,103,692,869	\$1,104,439	0.0377%	\$13,735	\$918	7.2%
W20	Willow Fork Drainage District	\$100,428	0.145000	\$5,729,731,085	\$8,308,110	0.2837%	\$103,325	\$2,897	2.9%
W22	First Colony LID # 2	\$13,524	0.154100	\$715,161,144	\$1,102,063	0.0376%	\$13,706	\$182	1.3%
W24	West Keegans Bayou	\$17,733	0.074900	\$1,935,701,621	\$1,449,841	0.0495%	\$18,031	\$298	1.7%
W25	Fort Bend Fresh Water Supply # 1	\$80,034	1.000000	\$679,322,093	\$6,793,221	0.2320%	\$84,485	\$4,451	5.6%
W26	Fort Bend LID #10	\$41,304	0.510000	\$653,326,962	\$3,331,968	0.1138%	\$41,438	\$134	0.3%
W28	Fort Bend LID #11	\$49,269	0.205000	\$1,977,516,859	\$4,053,910	0.1384%	\$50,417	\$1,148	2.3%
W29	Fort Bend Fresh Water Supply # 2	\$22,417	0.514500	\$352,982,600	\$1,816,095	0.0620%	\$22,586	\$169	0.8%
W30	Fort Bend LID #14	\$10,298	0.101000	\$844,068,539	\$852,509	0.0291%	\$10,602	\$304	3.0%
W32	Fort Bend W.C.I.D. # 3	\$11,647	0.550000	\$183,007,704	\$1,006,542	0.0344%	\$12,518	\$871	7.5%
W35	Fort Bend LID #15	\$115,309	0.245000	\$3,900,896,651	\$9,557,197	0.3263%	\$118,859	\$3,550	3.1%
W36	Fort Bend WCID 8	\$3,780	0.950000	\$35,000,434	\$332,504	0.0114%	\$4,135	\$355	9.4%
W38	Fort Bend WCID 10	\$1,587	0.980000	\$13,214,756	\$129,505	0.0044%	\$1,611	\$24	1.5%
W39	Fort Bend LID #17	\$141,526	0.430000	\$2,865,564,489	\$12,321,927	0.4207%	\$153,243	\$11,717	8.3%
W41	Fort Bend LID #19	\$54,623	0.400000	\$1,109,223,947	\$4,436,896	0.1515%	\$55,180	\$557	1.0%
W42	Fort Bend LID #20	\$18,662	0.485000	\$364,136,489	\$1,766,062	0.0603%	\$21,964	\$3,302	17.7%
W43	Ft Bend LID 24	\$19,361	1.450000	\$115,527,046	\$1,675,142	0.0572%	\$20,833	\$1,472	7.6%
	Total	\$34,784,359		\$637,521,238,951	\$2,928,685,531	100.00%	\$36,422,938	\$1,638,579	4.71%

**Fort Bend Central Appraisal District
FY26-27 Proposed Budget
Positions and Pay Grades**

POSITION	SALARY GRADE	Minimum Salary	Midpoint Salary	Maximum Salary
Appeals Associate	106	\$34,461	\$41,353	\$48,245
Appraisal Associate (BPP, Commercial, Land, Residential)	106	\$34,461	\$41,353	\$48,245
Communications & Outreach Associate	106	\$34,461	\$41,353	\$48,245
Research Associate	106	\$34,461	\$41,353	\$48,245
Support Associate	106	\$34,461	\$41,353	\$48,245
Appraiser I (Ag, BPP, Commercial, Land, Residential)	107	\$36,873	\$44,248	\$51,622
Senior Appraisal Associate	108	\$39,454	\$47,345	\$55,236
Senior Communications & Outreach Associate	108	\$39,454	\$47,345	\$55,236
Senior Research Associate	108	\$39,454	\$47,345	\$55,236
Senior Support Associate	108	\$39,454	\$47,345	\$55,236
Appraiser II (Ag, BPP, Commercial, Land, Residential)	109	\$42,216	\$50,659	\$59,102
Communications Support Specialist	109	\$42,216	\$50,659	\$59,102
GIS Administrative Specialist I	109	\$42,216	\$50,659	\$59,102
Appeals Coordinator	110	\$45,171	\$54,205	\$63,239
Appeals Specialist	110	\$45,171	\$54,206	\$63,239
Appraisal Operations Specialist	110	\$45,171	\$54,206	\$63,239
Desktop Support Specialist	110	\$45,171	\$54,205	\$63,239
GIS Administrative Specialist II	110	\$45,171	\$54,205	\$63,239
Paralegal	110	\$45,171	\$54,205	\$63,239
Public Information Coordinator	110	\$45,171	\$54,205	\$63,239
Appraiser III (Ag, BPP, Commercial, Land, Residential)	111	\$48,333	\$57,999	\$67,666
GIS Technician I	111	\$48,333	\$57,999	\$67,666
Senior Communications Support Specialist	111	\$48,333	\$57,999	\$67,666
Accountant	112	\$51,716	\$62,059	\$72,403
Human Resources Generalist	112	\$51,716	\$62,059	\$72,403
Senior Desktop Support Specialist	112	\$51,716	\$62,059	\$72,403
Web Developer	112	\$51,716	\$62,059	\$72,403
Appraiser IV (Ag, BPP, Commercial, Land, Residential)	113	\$55,336	\$66,404	\$77,471
GIS Specialist	113	\$55,336	\$66,404	\$77,471
Senior Appraiser (BPP, Commercial, Land, Residential)	114	\$59,210	\$71,052	\$82,894
Senior Human Resources Generalist	114	\$59,210	\$71,052	\$82,894
Applications Developer	115	\$63,355	\$76,026	\$88,696
Appraisal Analyst (BPP, Commercial, Land, Residential)	115	\$63,355	\$76,026	\$88,696
Arbitration Appraiser (Commercial, Residential)	115	\$63,355	\$76,026	\$88,696
Data Analyst	115	\$63,355	\$76,026	\$88,696
GIS Analyst	115	\$63,355	\$76,026	\$88,696
GIS Lead Specialist	115	\$63,355	\$76,026	\$88,696
Operations Analyst	115	\$63,355	\$76,026	\$88,696
Research Analyst	115	\$63,355	\$76,026	\$88,696
Database Administrator	116	\$68,423	\$82,108	\$95,792
GIS Systems Administrator	116	\$68,423	\$82,108	\$95,792
Litigation Appraiser	116	\$68,423	\$82,108	\$95,792
Network Administrator	116	\$68,423	\$82,108	\$95,793
Security Administrator	116	\$68,423	\$82,108	\$95,792
Senior Appraisal Analyst (BPP, Commercial, Land, Residential)	116	\$68,423	\$82,108	\$95,792
Senior Arbitration Appraiser	116	\$68,423	\$82,108	\$95,792

**Fort Bend Central Appraisal District
FY26-27 Proposed Budget
Positions and Pay Grades**

POSITION	SALARY GRADE	Minimum Salary	Midpoint Salary	Maximum Salary
Supervisor, Appeals	116	\$68,423	\$82,108	\$95,792
Supervisor, Appraisal (BPP, Commercial, Land, Residential)	116	\$68,423	\$82,108	\$95,792
Supervisor, Communications & Outreach	116	\$68,423	\$82,108	\$95,792
Supervisor, Property Records Administration	116	\$68,423	\$82,108	\$95,792
Supervisor, Shared Services	116	\$68,423	\$82,108	\$95,792
System Administrator (IT)	116	\$68,423	\$82,108	\$95,792
Senior Litigation Appraiser	117	\$73,897	\$88,676	\$103,456
Controller	118	\$79,809	\$95,770	\$111,732
Data Manager	118	\$79,809	\$95,770	\$111,732
GIS Development Manager	118	\$79,809	\$95,770	\$111,732
GIS Land Records Manager	118	\$79,809	\$95,770	\$111,732
Residential Valuation Manager	118	\$79,809	\$95,770	\$111,732
Director, Appeals	120	\$93,089	\$111,706	\$130,324
Director, Business & Personal Property Appraisal	120	\$93,089	\$111,706	\$130,324
Director, Commercial Appraisal	120	\$93,089	\$111,706	\$130,324
Director, Communications & Outreach	120	\$93,089	\$111,706	\$130,324
Director, Information & Assistance	120	\$93,089	\$111,706	\$130,324
Director, Land Appraisal	120	\$93,089	\$111,706	\$130,324
Director, Litigation	120	\$93,089	\$111,706	\$130,324
Director, Property Records Administration	120	\$93,089	\$111,706	\$130,324
Director, Residential Appraisal	120	\$93,089	\$111,706	\$130,324
Director, Shared Services	120	\$93,089	\$111,706	\$130,324
Director, Appraisal Operations	122	\$108,579	\$130,294	\$152,010
Director, Geographic Information Systems	122	\$108,579	\$130,294	\$152,010
Director, Information Technology	122	\$108,579	\$130,294	\$152,010
Director, Special Projects	122	\$108,579	\$130,294	\$152,010
Chief Financial Officer	124	\$126,646	\$151,975	\$177,305
Chief Human Resources Officer	124	\$126,646	\$151,975	\$177,305
Chief Legal & Compliance Officer	125	\$136,778	\$164,133	\$191,489
Deputy Chief Appraiser (Appraisal Services)	125	\$136,778	\$164,133	\$191,489
Deputy Chief Appraiser (Support Services)	125	\$136,778	\$164,133	\$191,489
Chief Appraiser	E	\$150,000	\$250,000	\$350,000

Fort Bend Central Appraisal District

PFY26-27 Proposed Budget

Pay Plan Schedule

Pay Grade	# of Employees	Minimum Salary	Midpoint Salary	Maximum Salary
106	47	\$34,461	\$41,353	\$48,245
107	11	\$36,873	\$44,248	\$51,622
108	6	\$39,454	\$47,345	\$55,236
109	17	\$42,216	\$50,659	\$59,102
110	7	\$45,171	\$54,205	\$63,239
111	5	\$48,333	\$57,999	\$67,666
112	5	\$51,716	\$62,059	\$72,403
113	17	\$55,336	\$66,404	\$77,471
114	6	\$59,210	\$71,052	\$82,894
115	21	\$63,355	\$76,026	\$88,696
116	23	\$68,423	\$82,108	\$95,792
117	2	\$73,897	\$88,676	\$103,456
118	5	\$79,809	\$95,770	\$111,732
119	0	N/A	N/A	N/A
120	10	\$93,089	\$111,706	\$130,324
121	0	N/A	N/A	N/A
122	4	\$108,579	\$130,294	\$152,010
123	2	\$126,646	\$151,975	\$177,305
124	3	\$136,778	\$164,133	\$191,489
E	1	\$150,000	\$250,000	\$350,000
	192			

Seasonal	43	N/A	N/A	N/A
----------	----	-----	-----	-----

**Fort Bend Central Appraisal District
FY26-27 Proposed Budget
Position Schedule**

	Pay Grade FY27	FY26 # of Positions	FY27 # of Positions	FY27 Retirement	FY27 Other Benefits	FY27 Minimum Salary	FY27 Midpoint Salary	FY27 Maximum Salary
Accountant	112	2	2	\$27,694	\$47,987	\$51,716	\$62,059	\$72,403
Appeals Coordinator	110	1	1	\$12,037	\$19,527	\$45,171	\$54,205	\$63,239
Appraisal Associate	106	4	4	\$40,172	\$61,968	\$34,461	\$41,353	\$48,245
Appraisal Operations Specialist *	118	0	1	\$11,900	\$31,517	\$79,809	\$95,770	\$111,732
Appraiser I	107	12	11	\$114,596	\$174,894	\$36,873	\$44,248	\$51,622
Appraiser II	109	13	13	\$148,159	\$260,428	\$42,216	\$50,659	\$59,102
Appraiser III	111	3	1	\$12,295	\$17,421	\$48,333	\$57,999	\$67,666
Appraiser IV	113	18	17	\$265,080	\$353,181	\$55,336	\$66,404	\$77,471
Arbitration Appraiser	115	2	2	\$34,945	\$48,328	\$53,355	\$76,026	\$88,696
Business & Finance Manager	118	1	0	\$0	\$0	\$79,809	\$95,770	\$111,732
Business Personal Property Analyst	115	1	1	\$14,414	\$17,719	\$53,355	\$76,026	\$88,696
Communication & Outreach Associate	106	9	9	\$82,967	\$82,231	\$34,461	\$41,353	\$48,245
Chief Appraiser	E	1	1	\$61,863	\$33,571	\$150,000	\$250,000	\$350,000
Chief Financial Officer	124	1	1	\$31,883	\$24,281	\$156,646	\$151,975	\$177,305
Chief Human Resources Officer	124	1	1	\$32,622	\$20,367	\$156,646	\$151,975	\$177,305
Chief Legal & Compliance Officer	125	1	1	\$38,203	\$22,431	\$136,778	\$164,133	\$191,489
Commercial Analyst	115	2	2	\$34,721	\$37,683	\$53,355	\$76,026	\$88,696
Communications Support Specialist	109	3	2	\$18,152	\$37,031	\$42,216	\$50,659	\$59,102
Controller	118	1	1	\$14,497	\$18,285	\$79,809	\$95,770	\$111,732
Data Analyst	115	2	2	\$27,053	\$36,629	\$53,355	\$76,026	\$88,696
Database Administrator	116	1	1	\$16,250	\$17,840	\$68,423	\$82,108	\$95,792
Deputy Chief Appraiser	125	2	2	\$68,041	\$69,784	\$136,778	\$164,133	\$191,489
Desktop Support Specialist *	110	2	4	\$34,969	\$102,827	\$45,171	\$54,205	\$63,239
Director, Appeals	120	1	1	\$19,806	\$28,307	\$93,089	\$111,706	\$130,324
Director, Business Personal Property	120	1	1	\$20,327	\$18,612	\$93,089	\$111,706	\$130,324
Director, Communications & Outreach	120	1	1	\$13,414	\$37,680	\$93,089	\$111,706	\$130,324
Director, Commercial Appraisals	120	1	1	\$22,476	\$28,523	\$93,089	\$111,706	\$130,324
Director, Information & Assistance *	120	0	1	\$19,532	\$12,055	\$93,089	\$111,706	\$130,324
Director, Geographic Information Systems	122	1	1	\$23,323	\$28,542	\$108,579	\$130,294	\$152,010
Director, Information & Technology	122	1	1	\$25,149	\$19,103	\$108,579	\$130,294	\$152,010
Director, Land Appraisal	120	1	1	\$20,446	\$27,503	\$93,089	\$111,706	\$130,324
Director, Litigation	120	1	1	\$21,388	\$30,473	\$93,089	\$111,706	\$130,324
Director, Property Records Administration	120	1	1	\$20,493	\$19,947	\$93,089	\$111,706	\$130,324
Director, Residential Appraisal	120	1	1	\$20,006	\$27,596	\$93,089	\$111,706	\$130,324
Director, Shared Services	120	1	1	\$19,716	\$30,185	\$93,089	\$111,706	\$130,324
Director, Special Projects	122	1	1	\$28,528	\$21,080	\$108,579	\$130,294	\$152,010
Director, Appraisal Operations	122	0	1	\$26,657	\$31,173	\$108,579	\$130,294	\$152,010
GIS Administrative Specialist	109	3	2	\$22,350	\$37,053	\$42,216	\$50,659	\$59,102
GIS Analyst	115	1	1	\$16,167	\$19,147	\$53,355	\$76,026	\$88,696
GIS Applications Developer	115	1	1	\$15,409	\$19,213	\$53,355	\$76,026	\$88,696
GIS Development Manager	118	1	1	\$19,102	\$27,250	\$79,809	\$95,770	\$111,732
GIS Land Records Manager	118	1	1	\$18,904	\$19,677	\$79,809	\$95,770	\$111,732
GIS Lead Specialist	115	1	1	\$16,861	\$19,330	\$53,355	\$76,026	\$88,696
GIS Systems Administrator	116	1	1	\$19,241	\$2,835	\$68,423	\$82,108	\$95,792
GIS Technician I	111	2	3	\$36,676	\$67,929	\$48,333	\$57,999	\$67,666
HR Generalist	112	1	1	\$13,006	\$26,451	\$51,716	\$62,059	\$72,403
Land Analyst	115	4	4	\$53,351	\$76,131	\$53,355	\$76,026	\$88,696
Litigation Appraiser	116	3	3	\$53,953	\$63,484	\$68,423	\$82,108	\$95,792
Network Administrator	116	1	1	\$11,508	\$17,854	\$68,423	\$82,108	\$95,792
Operations Analyst	115	0	1	\$12,704	\$17,561	\$53,355	\$76,026	\$88,696
Paralegal	110	1	1	\$14,250	\$17,214	\$45,171	\$54,205	\$63,239
Public Information Coordinator	110	1	1	\$11,846	\$38,466	\$45,171	\$54,205	\$63,239
Recruiting Specialist *	115	0	1	\$14,414	\$32,506	\$53,355	\$76,026	\$88,696
Research Analyst	115	1	1	\$18,531	\$39,374	\$53,355	\$76,026	\$88,696
Research Associate	106	14	15	\$157,751	\$304,200	\$34,461	\$41,353	\$48,245
Residential Analyst	115	4	4	\$61,713	\$87,792	\$53,355	\$76,026	\$88,696
Residential Valuation Manager	118	0	1	\$16,971	\$25,803	\$79,809	\$95,770	\$111,732
Security Administrator	116	1	1	\$11,508	\$17,854	\$68,423	\$82,108	\$95,792
Senior Appraisal Associate	108	2	2	\$24,917	\$21,140	\$39,454	\$47,345	\$55,236
Senior Arbitration Appraiser	116	1	1	\$17,475	\$19,043	\$68,423	\$82,108	\$95,792
Senior Appraiser	114	3	1	\$14,754	\$17,765	\$59,210	\$71,052	\$82,894
Senior Communications & Outreach Associate	108	1	1	\$12,216	\$10,966	\$39,454	\$47,345	\$55,236

**Fort Bend Central Appraisal District
FY26-27 Proposed Budget
Position Schedule**

	Pay Grade FY27	FY26 # of Positions	FY27 # of Positions	FY27 Retirement	FY27 Other Benefits	FY27 Minimum Salary	FY27 Midpoint Salary	FY27 Maximum Salary
Senior Commercial Analyst	116	1	1	\$19,140	\$19,742	\$68,423	\$82,108	\$95,792
Senior Appraiser	114	3	2	\$38,883	\$51,632	\$59,210	\$71,052	\$82,894
Senior Communications Support Specialist	111	0	1	\$13,504	\$11,766	\$48,333	\$57,999	\$67,666
Senior Desktop Support Specialist	112	1	1	\$12,659	\$17,263	\$51,716	\$62,059	\$72,403
Senior HR Generalist	114	1	1	\$15,756	\$17,932	\$59,210	\$71,052	\$82,894
Senior Litigation Appraiser	117	2	2	\$41,535	\$36,162	\$73,897	\$88,676	\$103,456
Senior Research Associate	108	2	1	\$11,481	\$27,584	\$39,454	\$47,345	\$55,236
Senior Appraiser	114	3	2	\$35,126	\$33,883	\$59,210	\$71,052	\$82,894
Senior Support Associate	108	3	2	\$24,193	\$37,584	\$39,454	\$47,345	\$55,236
Supervisor - Appeals	116	1	1	\$15,693	\$20,080	\$68,423	\$82,108	\$95,792
Supervisor - Business Personal Property	116	1	1	\$17,869	\$18,214	\$68,423	\$82,108	\$95,792
Supervisor - Communications & Outreach	116	1	1	\$15,672	\$11,483	\$68,423	\$82,108	\$95,792
Supervisor - Commercial Appraisal	116	2	2	\$38,631	\$38,241	\$68,423	\$82,108	\$95,792
Supervisor - Land Appraisal	116	1	2	\$39,572	\$38,204	\$68,423	\$82,108	\$95,792
Supervisor - Property Records & Administration	116	1	1	\$14,751	\$26,743	\$68,423	\$82,108	\$95,792
Supervisor - Residential Appraisal	116	4	4	\$68,157	\$77,823	\$68,423	\$82,108	\$95,792
Supervisor - Shared Services	116	1	1	\$15,002	\$19,177	\$68,423	\$82,108	\$95,792
Support Associate	106	13	19	\$190,035	\$399,013	\$34,461	\$41,353	\$48,245
IT Systems Administrator	116	1	1	\$17,562	\$39,034	\$68,423	\$82,108	\$95,792
Web Developer	112	1	1	\$13,906	\$11,226	\$51,716	\$62,059	\$72,403
		187	192					

* 5 New Positions were added in FY27: Director of Information & Assistance (1), Desktop Support Specialist (2), Appraisal Operations Specialist (1) and a Recruiting Specialist (1).

The Other Benefit estimate includes the following benefits: health/dental/vision insurance, medicare employer taxes, life insurance, 457 deferred compensation, unemployment insurance, long-term disability, and worker's compensation insurance. The District does not offer an auto allowance.

**Fort Bend Central Appraisal District
FY26-27 Proposed Budget
New Position Schedule**

Position	Pay Grade	# of New Positions	Minimum Salary	Midpoint Salary	Maximum Salary	Benefits Estimate
Desktop Support	110	2	\$ 45,171	\$ 54,205	\$ 63,239	81,754
Recruiting Specialist	115	1	\$ 53,355	\$ 76,026	\$ 88,696	46,920
Appraisal Operations Specialist	118	1	\$ 79,809	\$ 95,770	\$ 111,732	43,417
Director of Information & Assistance	120	1	\$ 93,089	\$ 111,706	\$ 130,324	51,094
Total		5				

Fort Bend Central Appraisal District Fact Sheet 2025

2801 B.F. Terry Blvd.
Rosenberg, Texas 77471
281.344.8623



**Serves More Than 889,000
Citizens**

Employs 180 Texans

**Values Nearly 425,000
Unique Parcels**

Serves 260 Jurisdictions

est.
1980

Covers
885
sq. miles

Market & Assessment Data

- Overall Market Value for 2025 ~ \$150 billion
- Median Household Income - \$105,583
- Average Home Value of Homesteaded Properties - \$463,080
- Residential property makes up 71% of all property value in Fort Bend



99 %

**2024
School District
Property Value
Study**



Oversight

The Texas Comptroller of Public Accounts conducts a yearly study measuring an appraisal district's performance.

One year, each appraisal district receives a PVS – followed by a MAP Study the next year.

Our **2024 School District Property Value Study (SDPVS)** received an overall Appraisal-to-Sale ratio of **99%**

FBCAD's **2023 Methods & Assistance Program (MAP)** garners a near-perfect 99%



Appraisers

- 3-5 Year Training to become a Registered Professional Appraiser
- Continuing Education Requirements
- Advanced Education Encouraged
- FBCAD employs 50 RPA level appraisers w/ 33 pursuing an RPA

Annual Service

- 26,000 Walk-ins
- 105,000 Phone Calls
- 530,000 Property Owner Mailings
- 35,000 Exemption Applications Processed
- 13,000 Emails from Taxpayers
- 250,000 Unique Website Visits
- 125,000 Total Protests Filed
- 80,000 Protests Resolved w/ value reduction
- 10,000 Protests filed online
- 120,000 Property Inspections



Annual Budget

- \$28 million for 2024
- \$67 per parcel
- Total 2024 tax levy: \$2.7 billion
- 0.92% district cost of levy

Key Challenges

- **Non-Disclosure State***
- **Fast Growing County**
- **High Volume of Appeals/Litigation**
- **Values increasing every year**
- **Large % of county in unincorporated areas**
- **Large number of taxing units (2nd highest in Texas)**

*Real Estate Sales Data Not Public Information

Fort Bend Central Appraisal District Fact Sheet 2025

2801 B.F. Terry Blvd.
Rosenberg, Texas 77471
281.344.8623

Property Tax Calendar

1/1 – Appraisal districts are required to appraise all county property at its value on this date.

1/1 - 4/30 – Appraisal districts complete appraisals and processes applications for exemption.

1/31 – Taxes due to local taxing units from previous year's valuation

2/1 – Local taxing units begin charging penalty and interest for unpaid tax bills.

April – Appraisal districts begin sending notices of appraised value

May – Appraisal review boards begin hearing protests

7/25 – Appraisal districts certify current appraised values to taxing units.

Aug/Sept – Local taxing units adopt tax rates

10/1 – Local taxing units begin sending tax bills



FBCAD Focus

- Transparency
- Availability
- Online solutions
- Outreach
- Efficiency



Contact

2801 B F Terry Blvd
Rosenberg, TX 77471
281-344-8623
M-F 8AM - 4:30PM
info@fbcad.org
www.fbcad.org

FBCAD Mission

We are dedicated to serving all of Fort Bend County through accurate and uniform property valuation and excellent customer service.

FBCAD Vision

We are committed to creating a service-centered, collaborative organization of empowered experts

FBCAD Core Values

- Work Together
- Ethics
- Commitment
- Accountability
- Respect
- Excellent Service



Deadlines

4/15 – Deadline to file personal property rendition

4/30 – Early deadline for homestead exemptions; hard deadline 2 years after delinquency date

4/30 – Deadline to file for ag/wildlife special use valuation

5/15 – Deadline to file a value protest (or 30 days after a notice of appraised value is received)

5/15 – Deadline to file personal property rendition if granted extension

2/1 (of next year) - Delinquency date for tax payment

