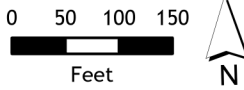


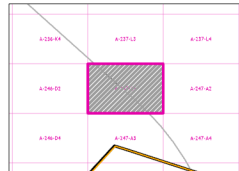
2021 Certified Tax Roll



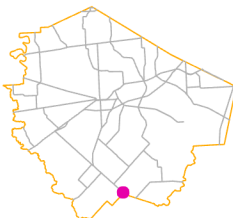
**Grid Page
A-247-A1**



Fort Bend Central Appraisal District (FBCAD) is not authorized to determine legal title to property or establish the legal boundaries of property. FBCAD establishes appraisal records based on information from various sources, including but not limited to deeds, plats and surveys provided to but not created by the district. FBCAD is not responsible for errors or omissions in information submitted to and reviewed by the district. If any errors or omission are detected, contact the GIS Department of the FBCAD.



Grid Location Reference



County Location Reference

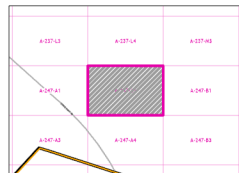
2021 Certified Tax Roll



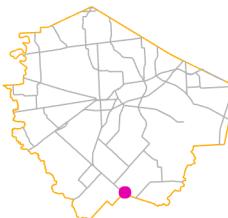
**Grid Page
A-247-A2**



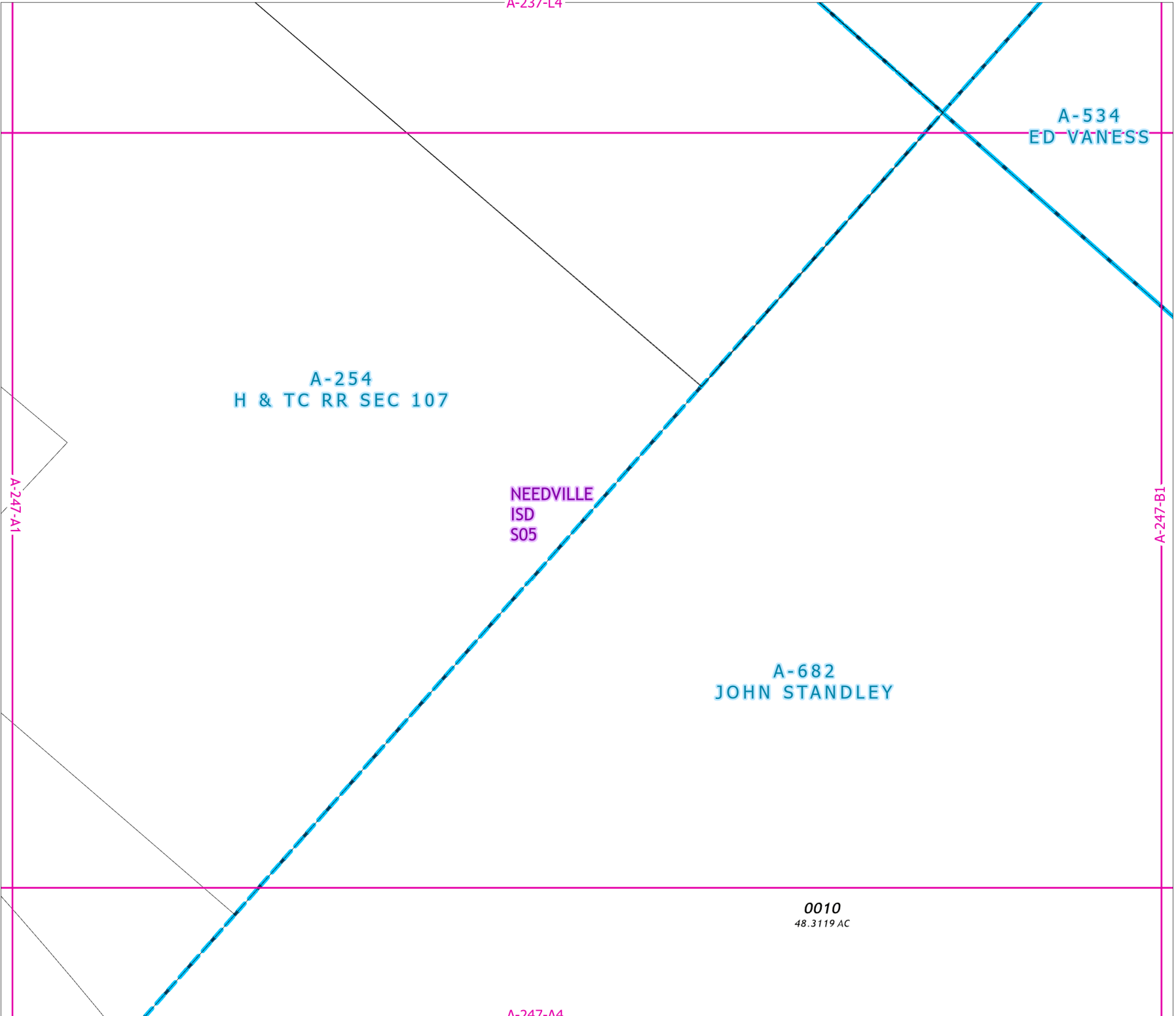
Fort Bend Central Appraisal District (FBCAD) is not authorized to determine legal title to property or establish the legal boundaries of property. FBCAD establishes appraisal records based on information from various sources, including but not limited to deeds, plats and surveys provided to but not created by the district. FBCAD is not responsible for errors or omissions in information submitted to and reviewed by the district. If any errors or omission are detected, contact the GIS Department of the FBCAD.



Grid Location Reference



County Location Reference



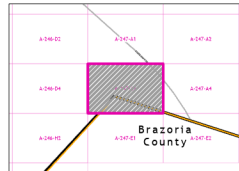
2021 Certified Tax Roll



Grid Page
A-247-A3



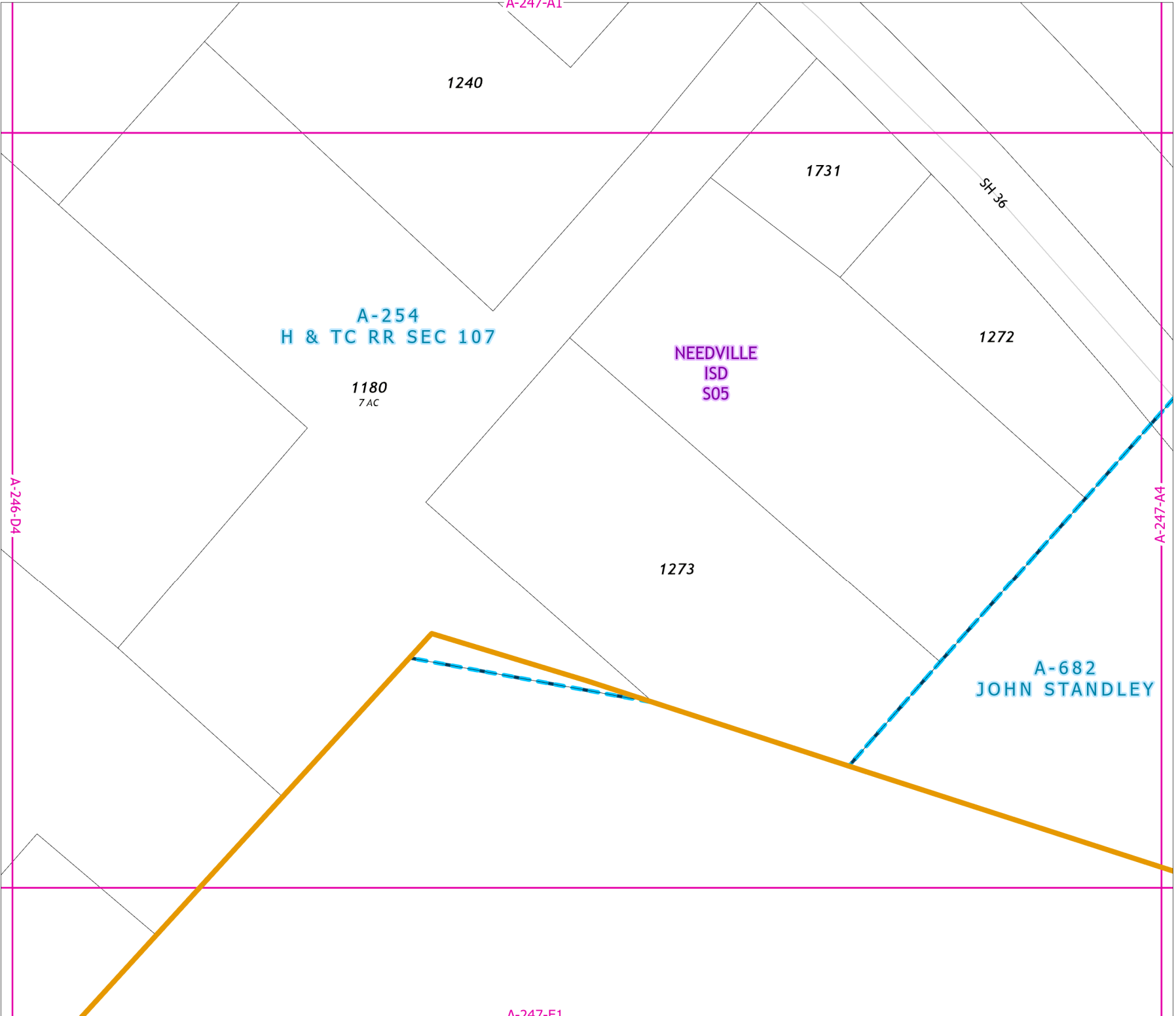
Fort Bend Central Appraisal District (FBCAD) is not authorized to determine legal title to property or establish the legal boundaries of property. FBCAD establishes appraisal records based on information from various sources, including but not limited to deeds, plats and surveys provided to but not created by the district. FBCAD is not responsible for errors or omissions in information submitted to and reviewed by the district. If any errors or omission are detected, contact the GIS Department of the FBCAD.



Grid Location Reference



County Location Reference



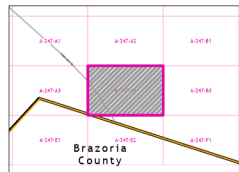
2021 Certified Tax Roll



Grid Page
A-247-A4



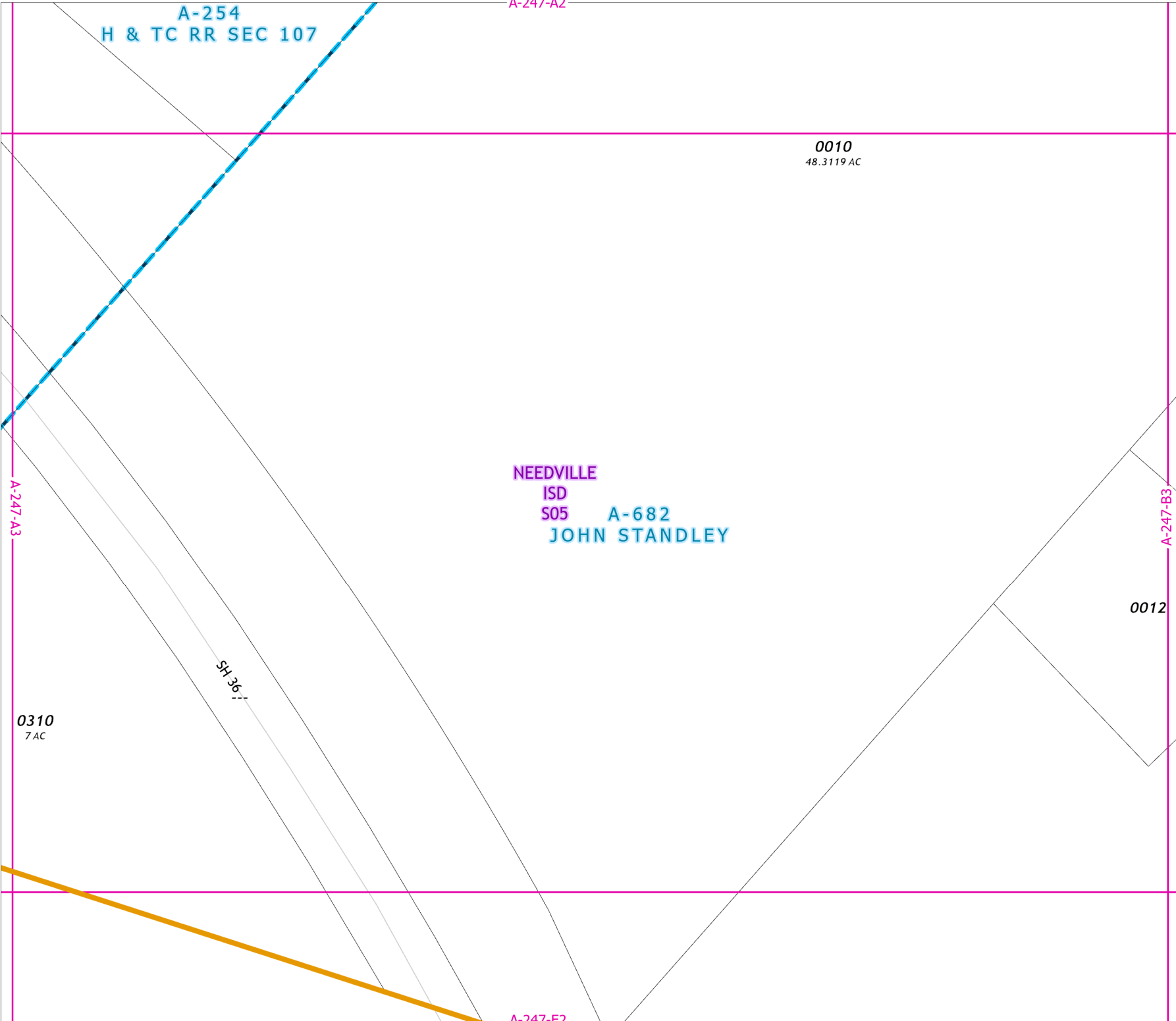
Fort Bend Central Appraisal District (FBCAD) is not authorized to determine legal title to property or establish the legal boundaries of property. FBCAD establishes appraisal records based on information from various sources, including but not limited to deeds, plats and surveys provided to but not created by the district. FBCAD is not responsible for errors or omissions in information submitted to and reviewed by the district. If any errors or omission are detected, contact the GIS Department of the FBCAD.



Grid Location Reference



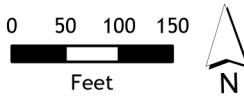
County Location Reference



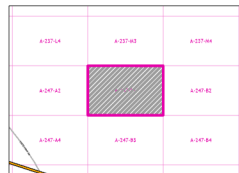
2021 Certified Tax Roll



Grid Page
A-247-B1



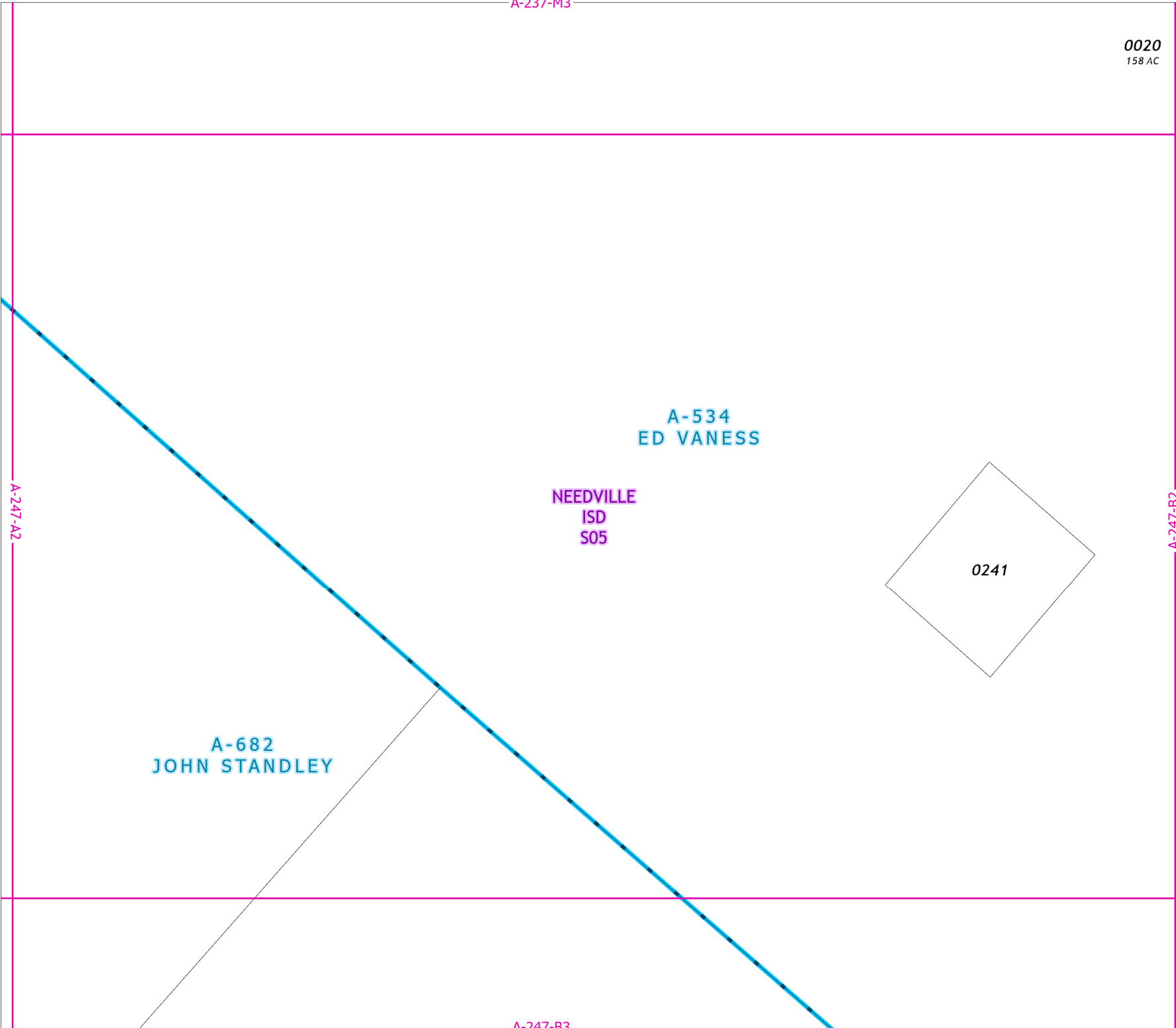
Fort Bend Central Appraisal District (FBCAD) is not authorized to determine legal title to property or establish the legal boundaries of property. FBCAD establishes appraisal records based on information from various sources, including but not limited to deeds, plats and surveys provided to but not created by the district. FBCAD is not responsible for errors or omissions in information submitted to and reviewed by the district. If any errors or omission are detected, contact the GIS Department of the FBCAD.



Grid Location Reference



County Location Reference



A-534
ED VANESS

NEEDVILLE
ISD
S05

0241

A-682
JOHN STANDLEY

2021 Certified Tax Roll

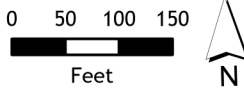


**Grid Page
A-247-B2**

**A-534
ED VANESS**

**NEEDVILLE
ISD
S05**

**A-634
H F SPANNUTH**



Fort Bend Central Appraisal District (FBCAD) is not authorized to determine legal title to property or establish the legal boundaries of property. FBCAD establishes appraisal records based on information from various sources, including but not limited to deeds, plats and surveys provided to but not created by the district. FBCAD is not responsible for errors or omissions in information submitted to and reviewed by the district. If any errors or omission are detected, contact the GIS Department of the FBCAD.

A-237-A0	A-237-A4	A-237-I0
A-247-B1	A-247-B2	A-247-E1
A-247-B3	A-247-B4	A-247-C2

Grid Location Reference



County Location Reference

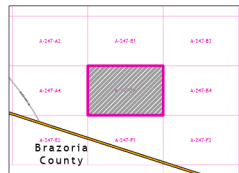
2021 Certified Tax Roll



**Grid Page
A-247-B3**



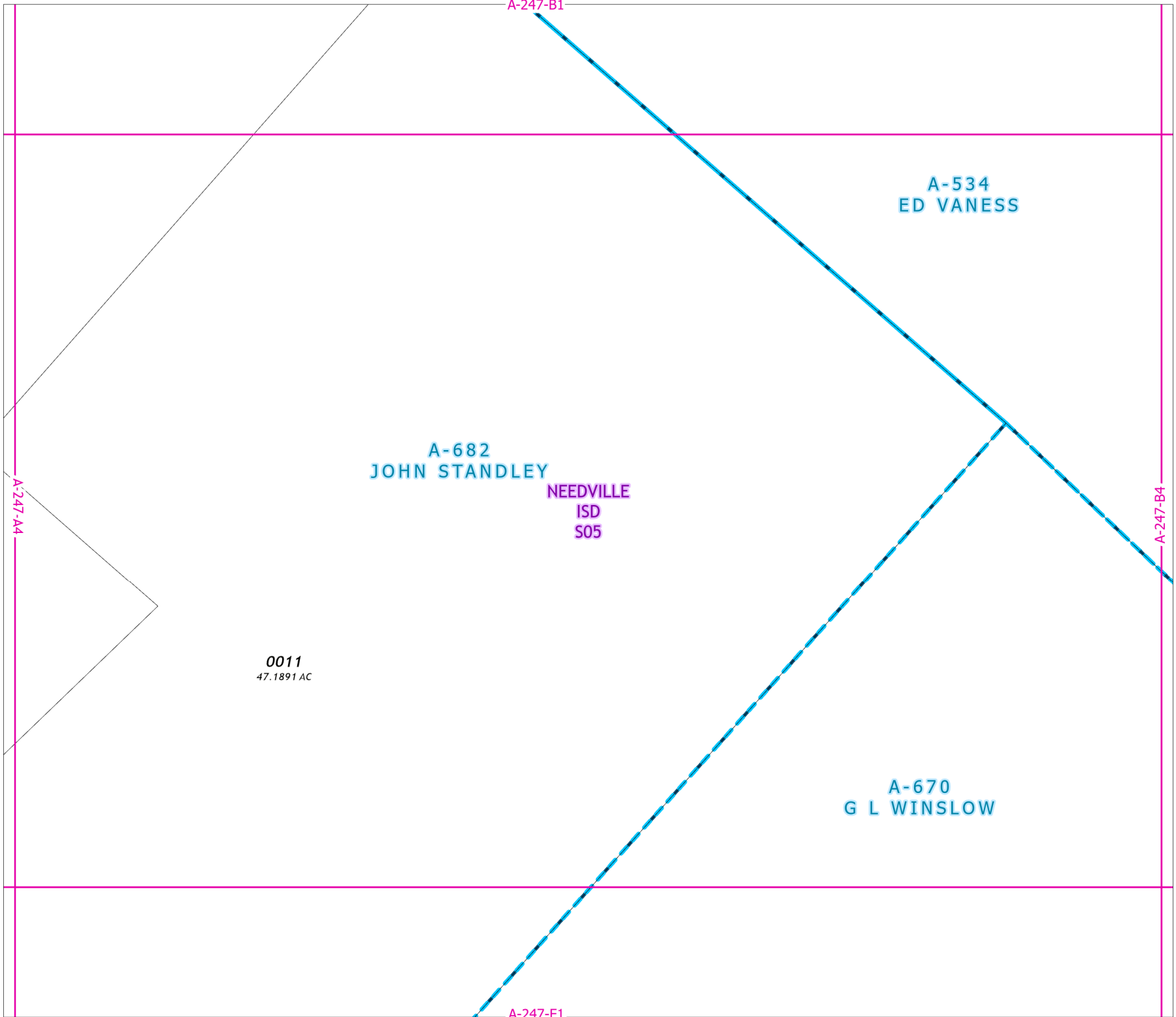
Fort Bend Central Appraisal District (FBCAD) is not authorized to determine legal title to property or establish the legal boundaries of property. FBCAD establishes appraisal records based on information from various sources, including but not limited to deeds, plats and surveys provided to but not created by the district. FBCAD is not responsible for errors or omissions in information submitted to and reviewed by the district. If any errors or omission are detected, contact the GIS Department of the FBCAD.



Grid Location Reference



County Location Reference



2021 Certified Tax Roll



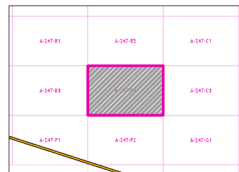
Grid Page
A-247-B4



003C
119 AC

A-247-C3

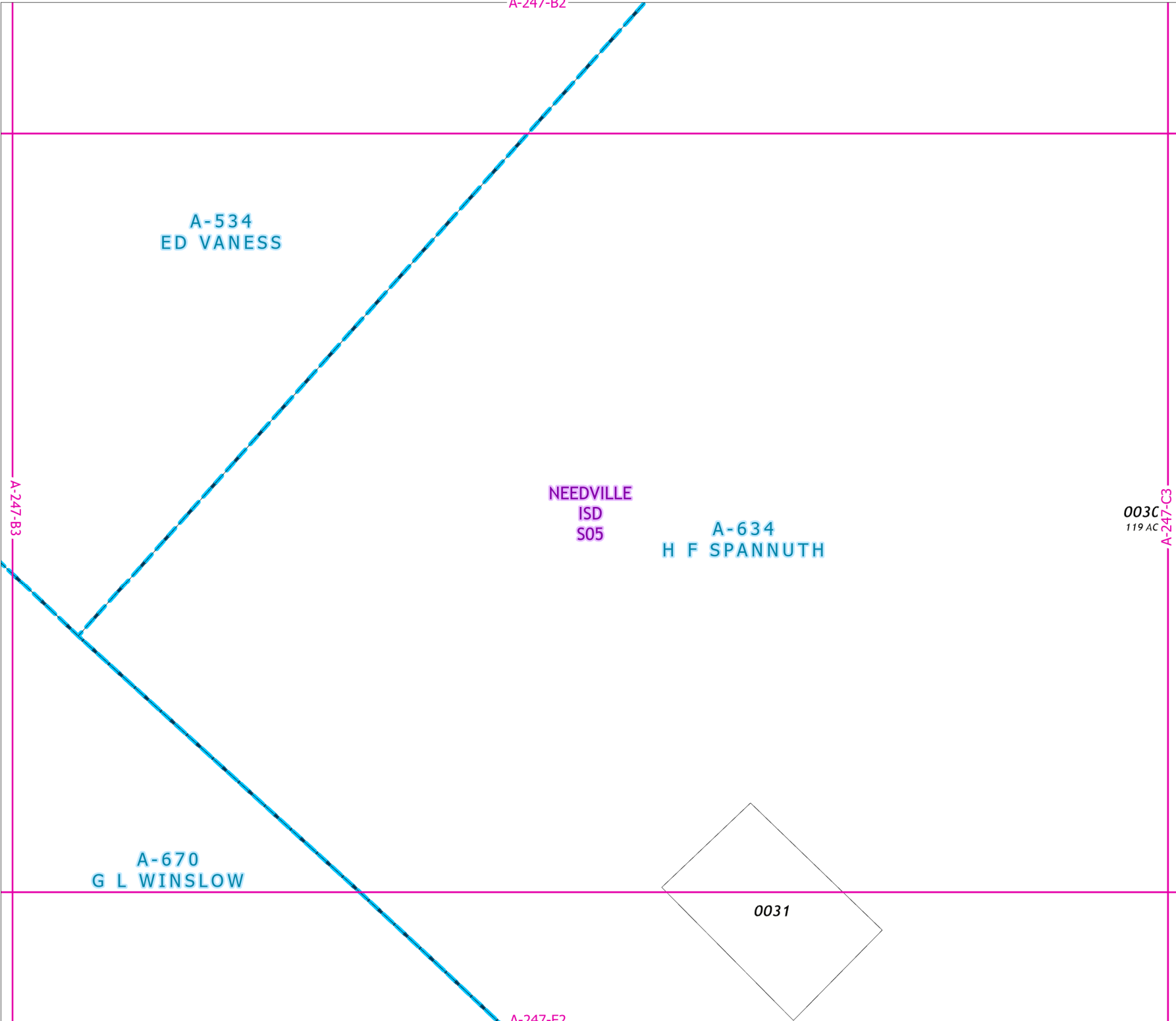
Fort Bend Central Appraisal District (FBCAD) is not authorized to determine legal title to property or establish the legal boundaries of property. FBCAD establishes appraisal records based on information from various sources, including but not limited to deeds, plats and surveys provided to but not created by the district. FBCAD is not responsible for errors or omissions in information submitted to and reviewed by the district. If any errors or omission are detected, contact the GIS Department of the FBCAD.



Grid Location Reference



County Location Reference



A-534
ED VANESS

A-237-J3

A-552
J R HOWTON

NEEDVILLE
ISD
S05

A-634
H F SPANNUTH

A-705
R T MULCAHY

A-247-B2

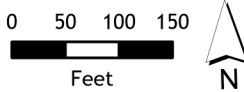
A-247-C2

A-247-C3

2021 Certified Tax Roll



Grid Page
A-247-C1



Fort Bend Central Appraisal District (FBCAD) is not authorized to determine legal title to property or establish the legal boundaries of property. FBCAD establishes appraisal records based on information from various sources, including but not limited to deeds, plats and surveys provided to but not created by the district. FBCAD is not responsible for errors or omissions in information submitted to and reviewed by the district. If any errors or omission are detected, contact the GIS Department of the FBCAD.

A-237-N4	A-237-J8	A-237-J4
A-247-B2	A-247-C1	A-247-C2
A-247-B4	A-247-C3	A-247-C4

Grid Location Reference



County Location Reference

A-237-J4

2021 Certified Tax Roll



Grid Page
A-247-C2

A-552
J R HOWTON

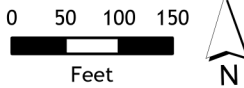
NEEDVILLE
ISD
S05

BEARD RD

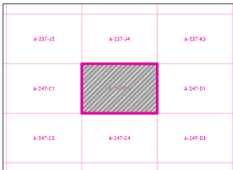
A-259
H & TC RR SEC 117

A-247-C1

A-247-D1



Fort Bend Central Appraisal District (FBCAD) is not authorized to determine legal title to property or establish the legal boundaries of property. FBCAD establishes appraisal records based on information from various sources, including but not limited to deeds, plats and surveys provided to but not created by the district. FBCAD is not responsible for errors or omissions in information submitted to and reviewed by the district. If any errors or omission are detected, contact the GIS Department of the FBCAD.



Grid Location Reference



County Location Reference

A-247-C4

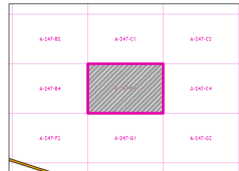
2021 Certified Tax Roll



Grid Page
A-247-C3



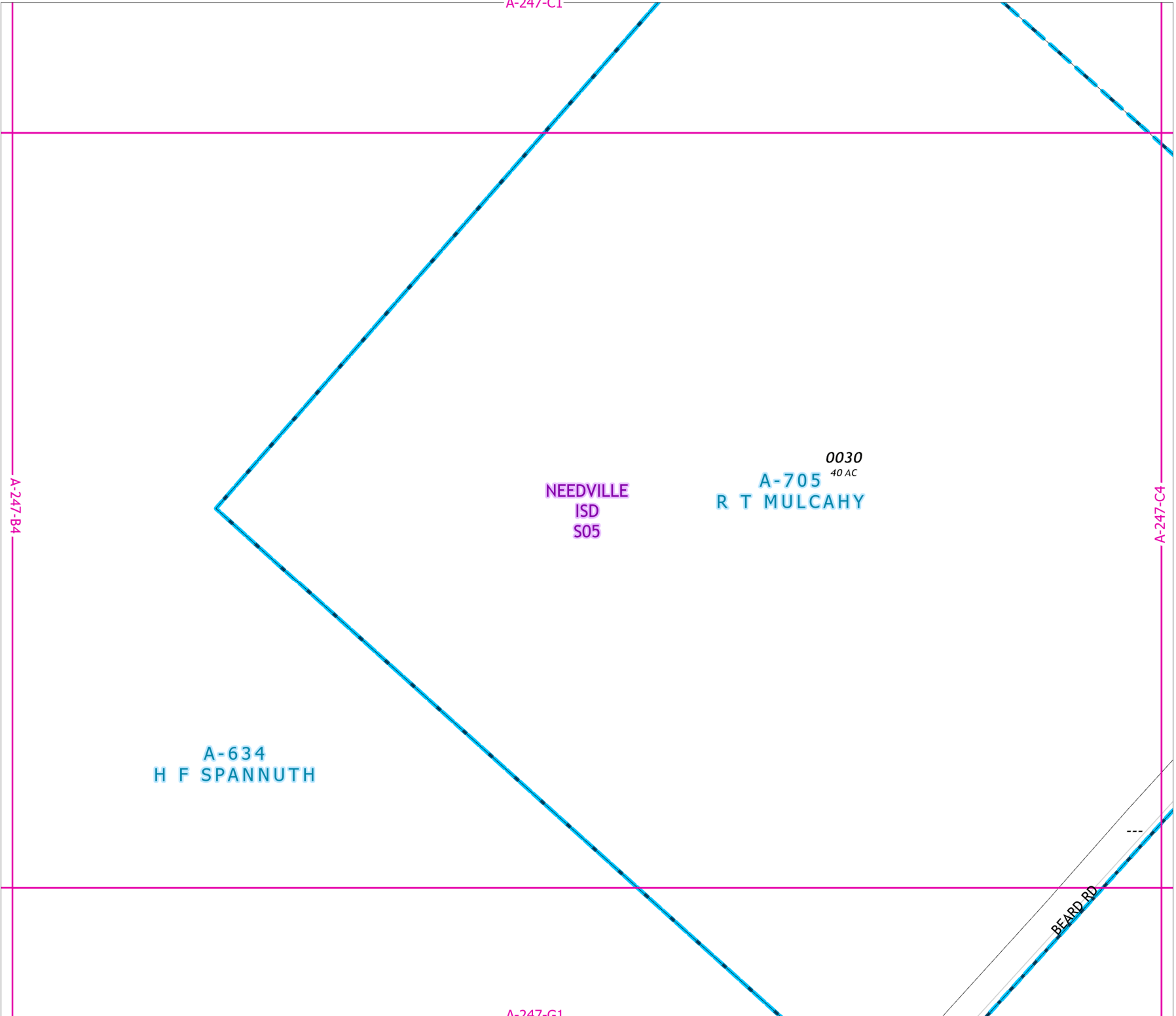
Fort Bend Central Appraisal District (FBCAD) is not authorized to determine legal title to property or establish the legal boundaries of property. FBCAD establishes appraisal records based on information from various sources, including but not limited to deeds, plats and surveys provided to but not created by the district. FBCAD is not responsible for errors or omissions in information submitted to and reviewed by the district. If any errors or omission are detected, contact the GIS Department of the FBCAD.



Grid Location Reference



County Location Reference



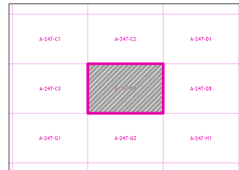
2021 Certified Tax Roll



Grid Page
A-247-C4



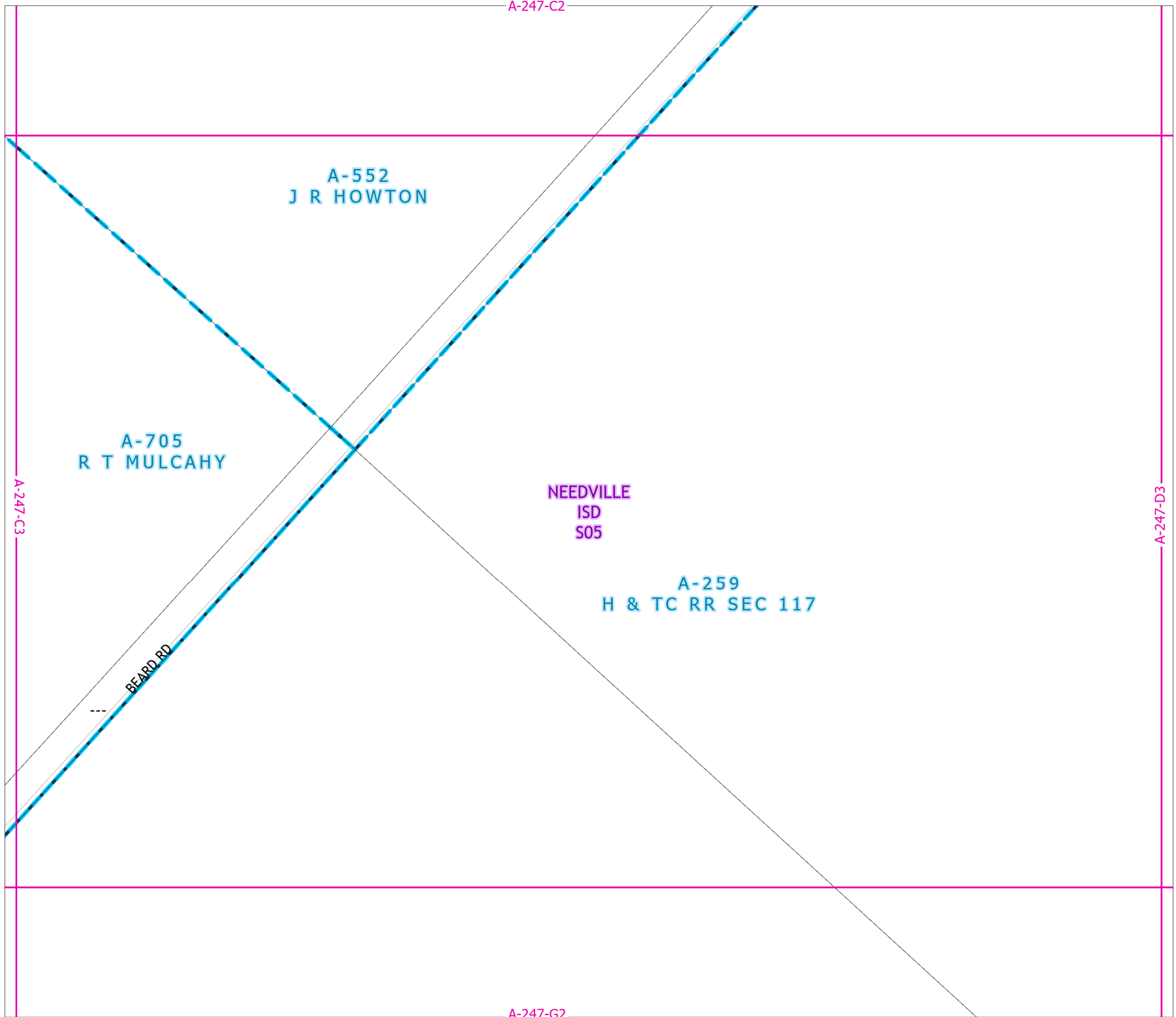
Fort Bend Central Appraisal District (FBCAD) is not authorized to determine legal title to property or establish the legal boundaries of property. FBCAD establishes appraisal records based on information from various sources, including but not limited to deeds, plats and surveys provided to but not created by the district. FBCAD is not responsible for errors or omissions in information submitted to and reviewed by the district. If any errors or omission are detected, contact the GIS Department of the FBCAD.



Grid Location Reference



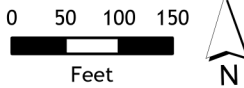
County Location Reference



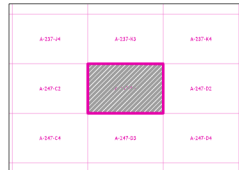
2021 Certified Tax Roll



Grid Page
A-247-D1



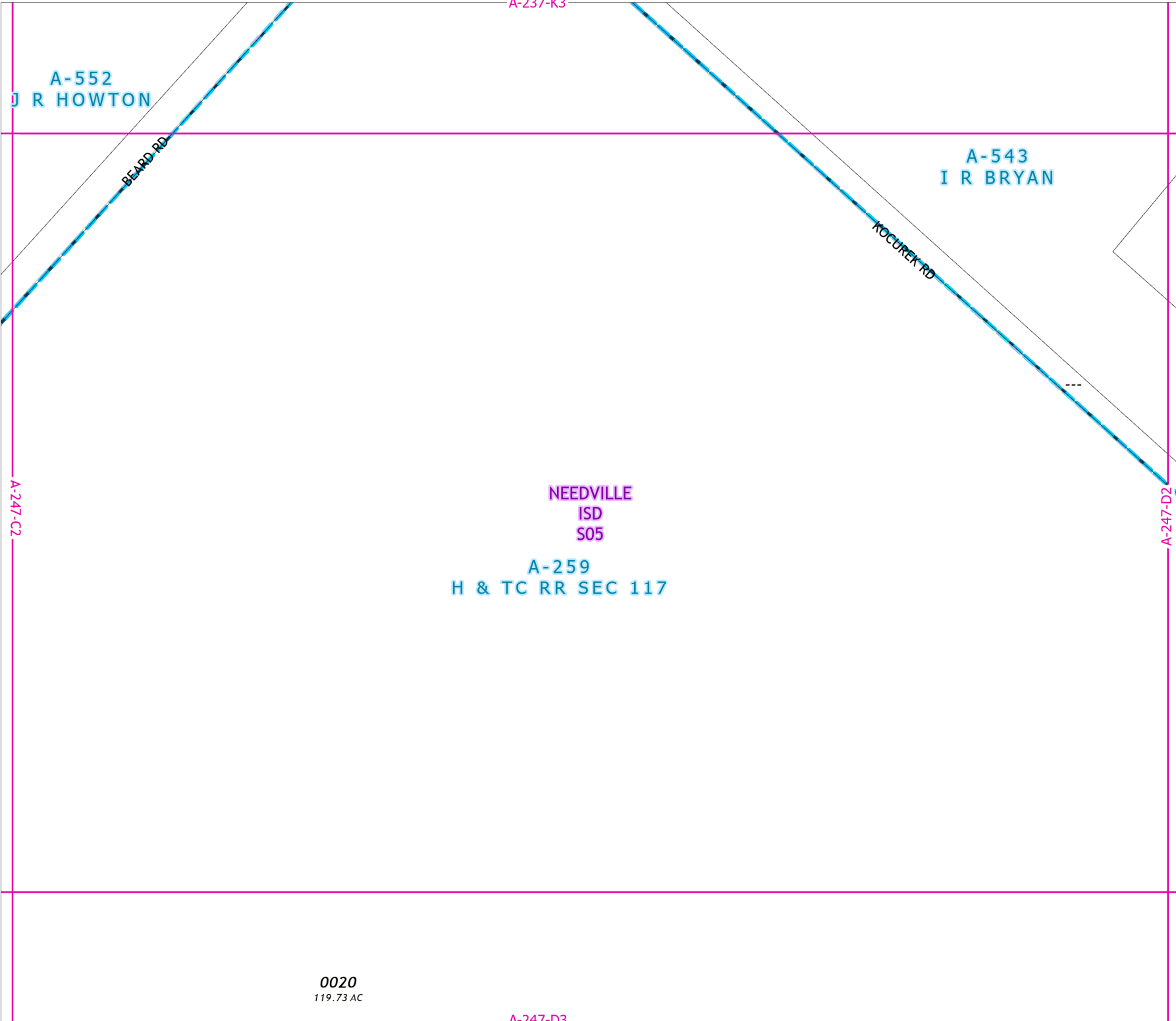
Fort Bend Central Appraisal District (FBCAD) is not authorized to determine legal title to property or establish the legal boundaries of property. FBCAD establishes appraisal records based on information from various sources, including but not limited to deeds, plats and surveys provided to but not created by the district. FBCAD is not responsible for errors or omissions in information submitted to and reviewed by the district. If any errors or omission are detected, contact the GIS Department of the FBCAD.



Grid Location Reference



County Location Reference



0020
119.73 AC

A-247-D3

A-237-K3

A-552
J R HOWTON

A-543
I R BRYAN

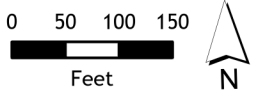
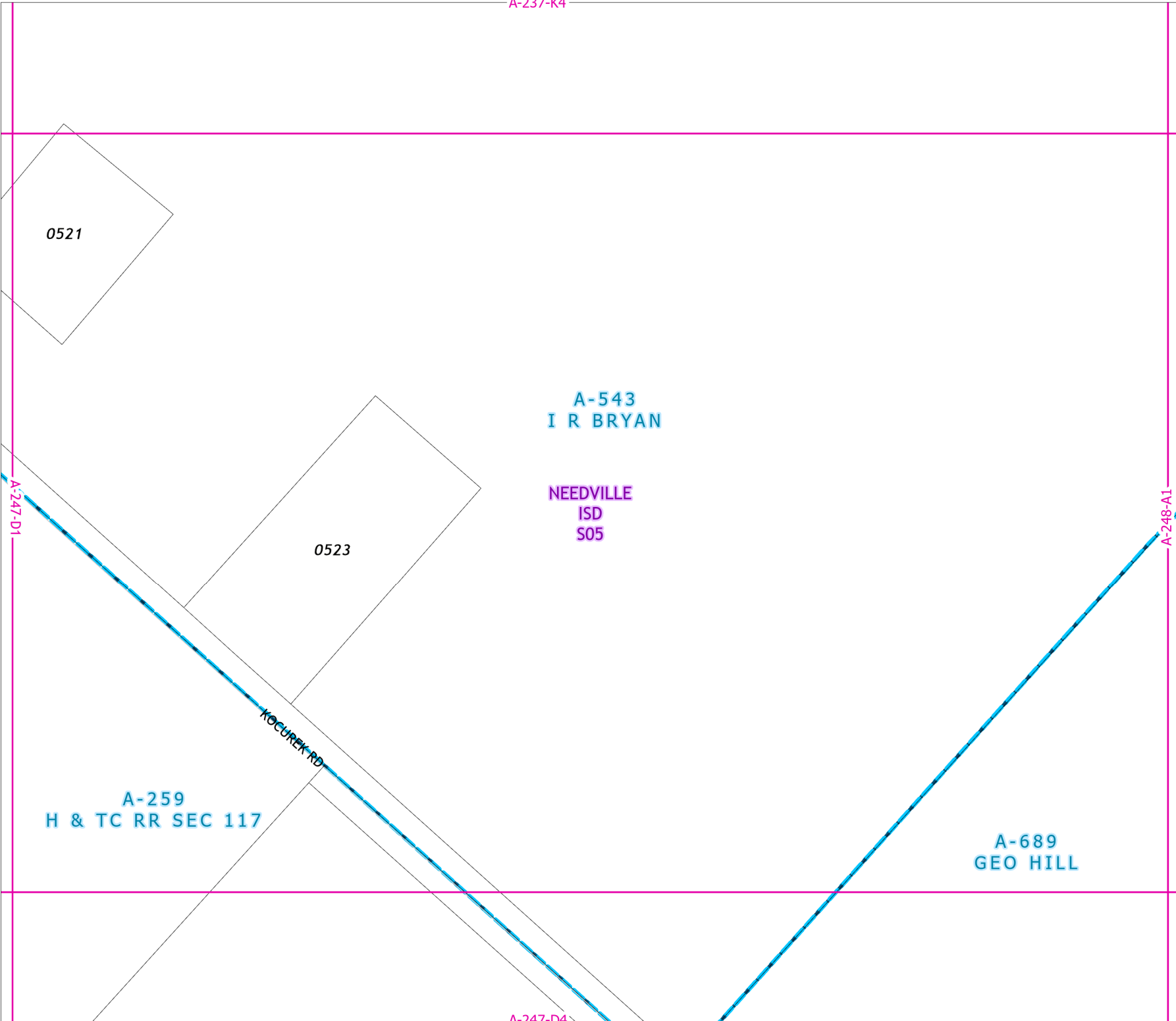
NEEDVILLE
ISD
S05
A-259
H & TC RR SEC 117

BEARD RD

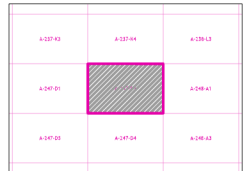
KOCUREK RD

A-247-C2

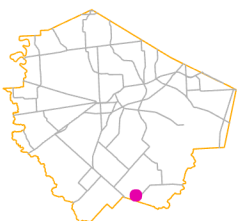
A-247-D2



Fort Bend Central Appraisal District (FBCAD) is not authorized to determine legal title to property or establish the legal boundaries of property. FBCAD establishes appraisal records based on information from various sources, including but not limited to deeds, plats and surveys provided to but not created by the district. FBCAD is not responsible for errors or omissions in information submitted to and reviewed by the district. If any errors or omission are detected, contact the GIS Department of the FBCAD.



Grid Location Reference



County Location Reference

A-247-D1

2021 Certified Tax Roll



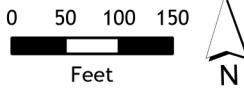
**Grid Page
A-247-D3**

0020
119.73 AC

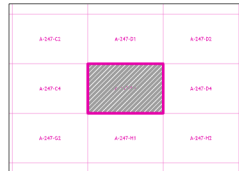
**A-259
H & TC RR SEC 117
NEEDVILLE
ISD
S05**

A-247-C4

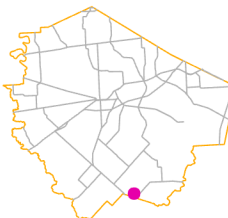
A-247-D4



Fort Bend Central Appraisal District (FBCAD) is not authorized to determine legal title to property or establish the legal boundaries of property. FBCAD establishes appraisal records based on information from various sources, including but not limited to deeds, plats and surveys provided to but not created by the district. FBCAD is not responsible for errors or omissions in information submitted to and reviewed by the district. If any errors or omission are detected, contact the GIS Department of the FBCAD.



Grid Location Reference



County Location Reference

A-247-H1

2021 Certified Tax Roll

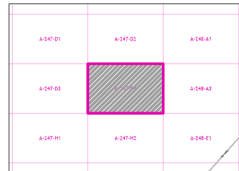


Grid Page
A-247-D4

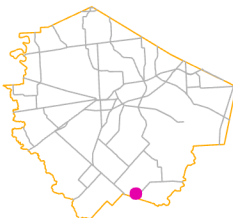


0021

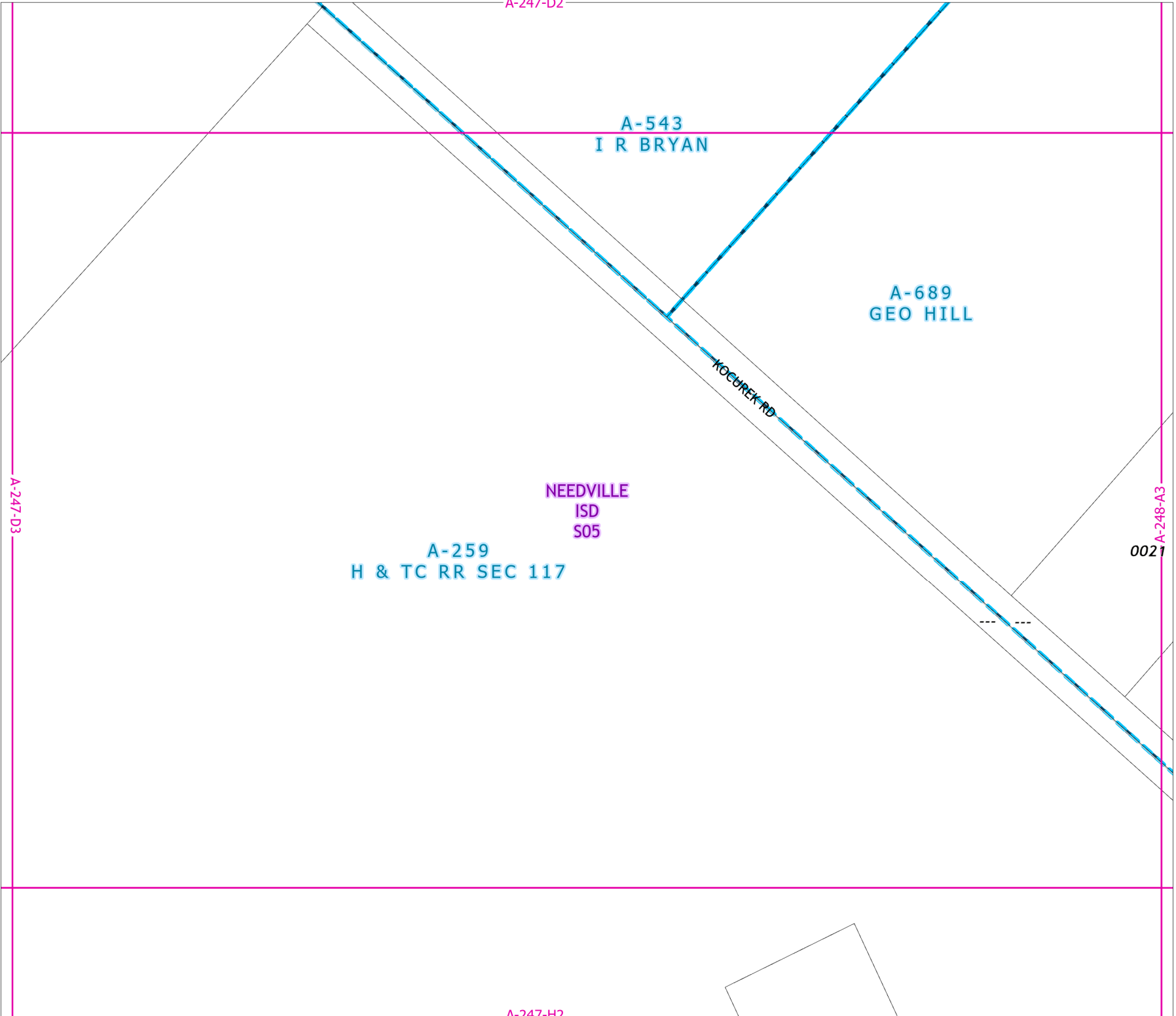
Fort Bend Central Appraisal District (FBCAD) is not authorized to determine legal title to property or establish the legal boundaries of property. FBCAD establishes appraisal records based on information from various sources, including but not limited to deeds, plats and surveys provided to but not created by the district. FBCAD is not responsible for errors or omissions in information submitted to and reviewed by the district. If any errors or omission are detected, contact the GIS Department of the FBCAD.

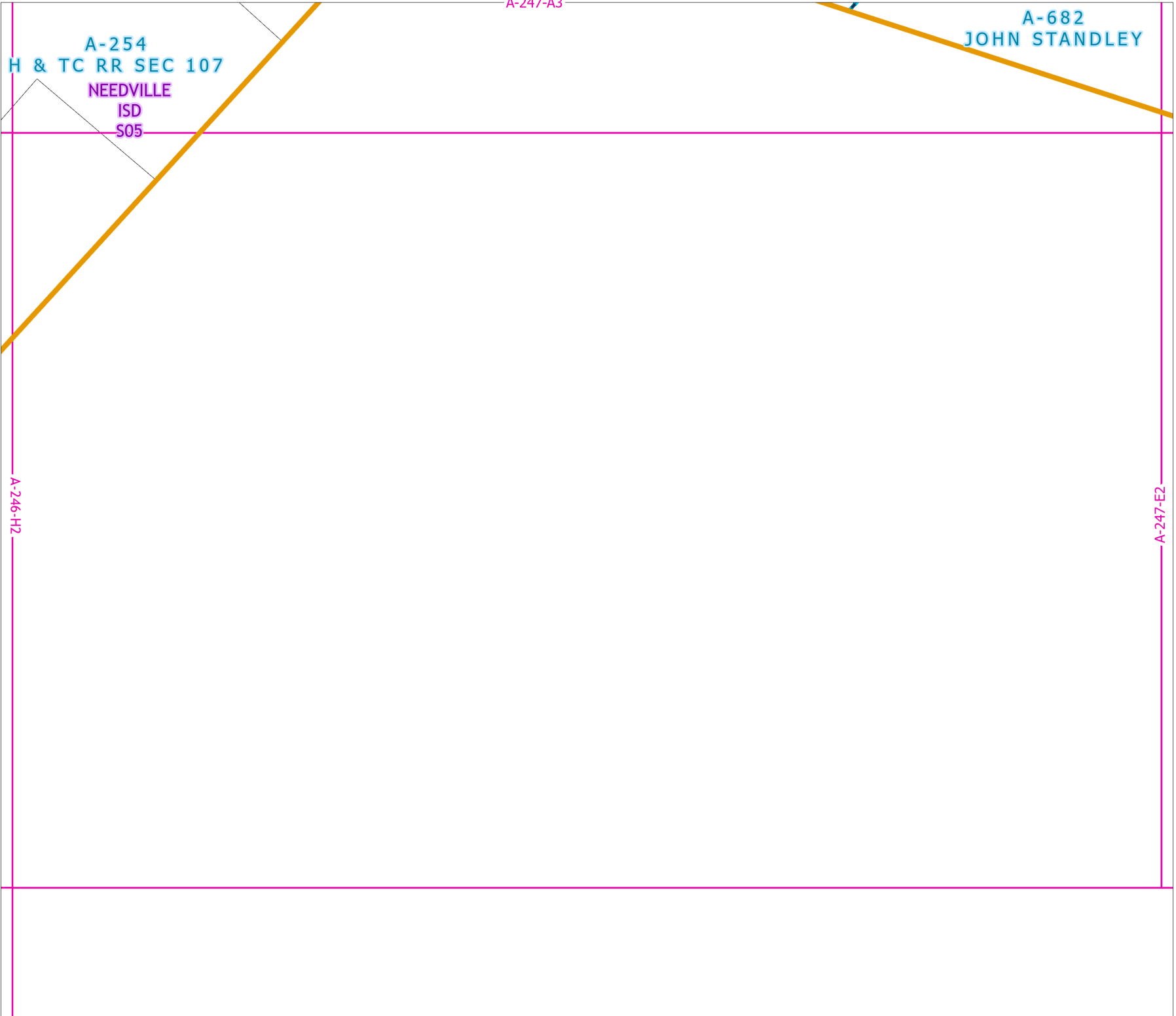


Grid Location Reference



County Location Reference

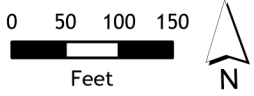




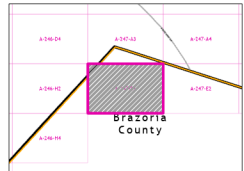
2021 Certified Tax Roll



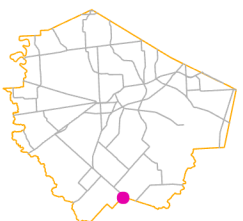
**Grid Page
A-247-E1**



Fort Bend Central Appraisal District (FBCAD) is not authorized to determine legal title to property or establish the legal boundaries of property. FBCAD establishes appraisal records based on information from various sources, including but not limited to deeds, plats and surveys provided to but not created by the district. FBCAD is not responsible for errors or omissions in information submitted to and reviewed by the district. If any errors or omission are detected, contact the GIS Department of the FBCAD.



Grid Location Reference



County Location Reference

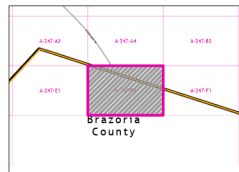
2021 Certified Tax Roll



Grid Page
A-247-E2



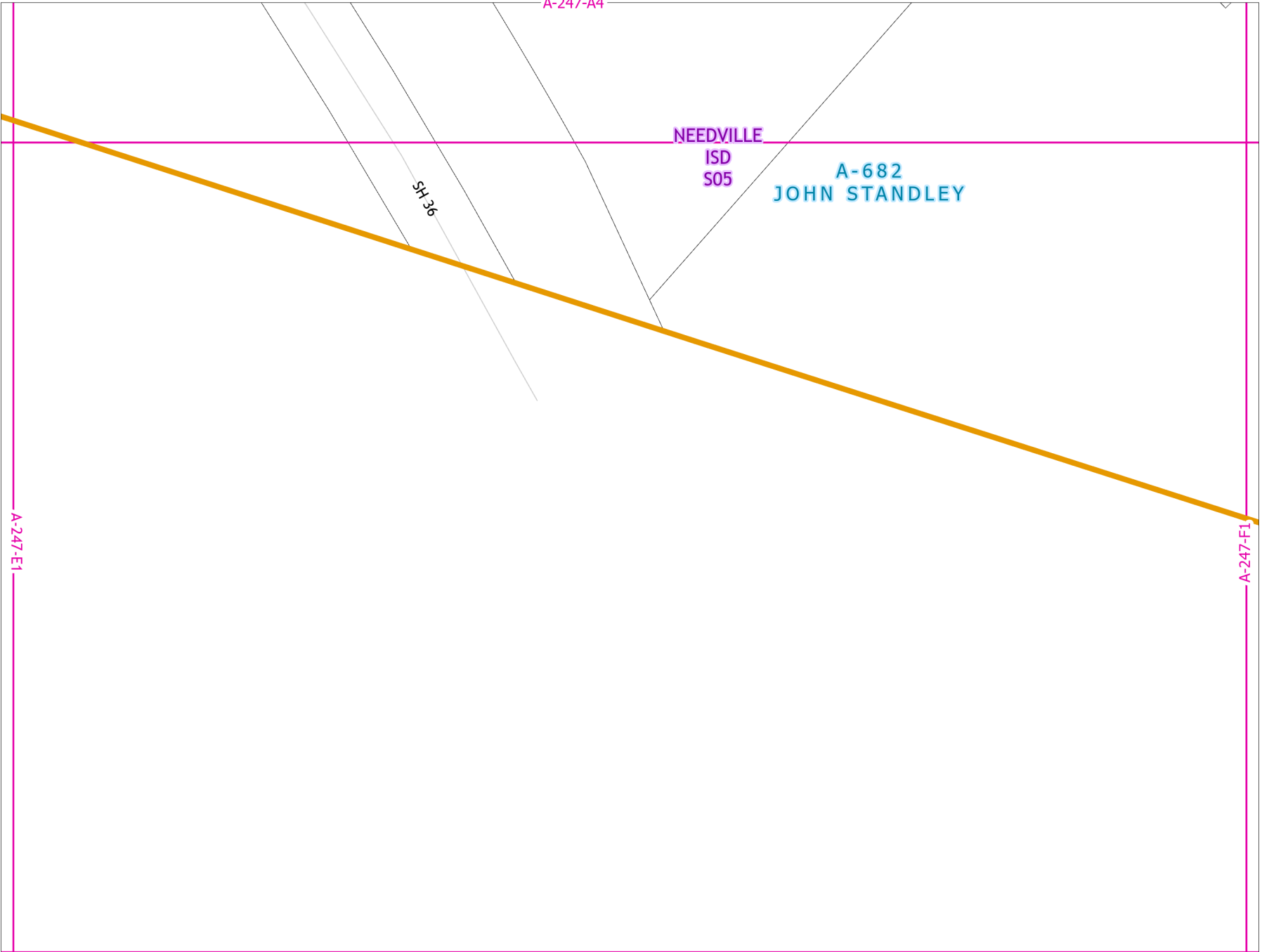
Fort Bend Central Appraisal District (FBCAD) is not authorized to determine legal title to property or establish the legal boundaries of property. FBCAD establishes appraisal records based on information from various sources, including but not limited to deeds, plats and surveys provided to but not created by the district. FBCAD is not responsible for errors or omissions in information submitted to and reviewed by the district. If any errors or omission are detected, contact the GIS Department of the FBCAD.



Grid Location Reference



County Location Reference



A-247-B3

A-682
JOHN STANDLEY

NEEDVILLE
ISD
S05 A-670
G L WINSLOW

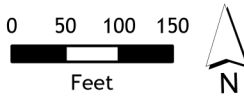
A-247-E2

A-247-F2

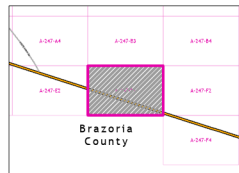
2021 Certified Tax Roll



Grid Page
A-247-F1



Fort Bend Central Appraisal District (FBCAD) is not authorized to determine legal title to property or establish the legal boundaries of property. FBCAD establishes appraisal records based on information from various sources, including but not limited to deeds, plats and surveys provided to but not created by the district. FBCAD is not responsible for errors or omissions in information submitted to and reviewed by the district. If any errors or omission are detected, contact the GIS Department of the FBCAD.



Grid Location Reference



County Location Reference

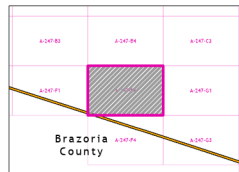
2021 Certified Tax Roll



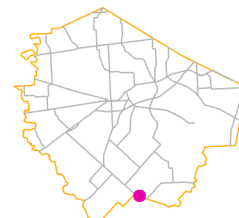
Grid Page
A-247-F2



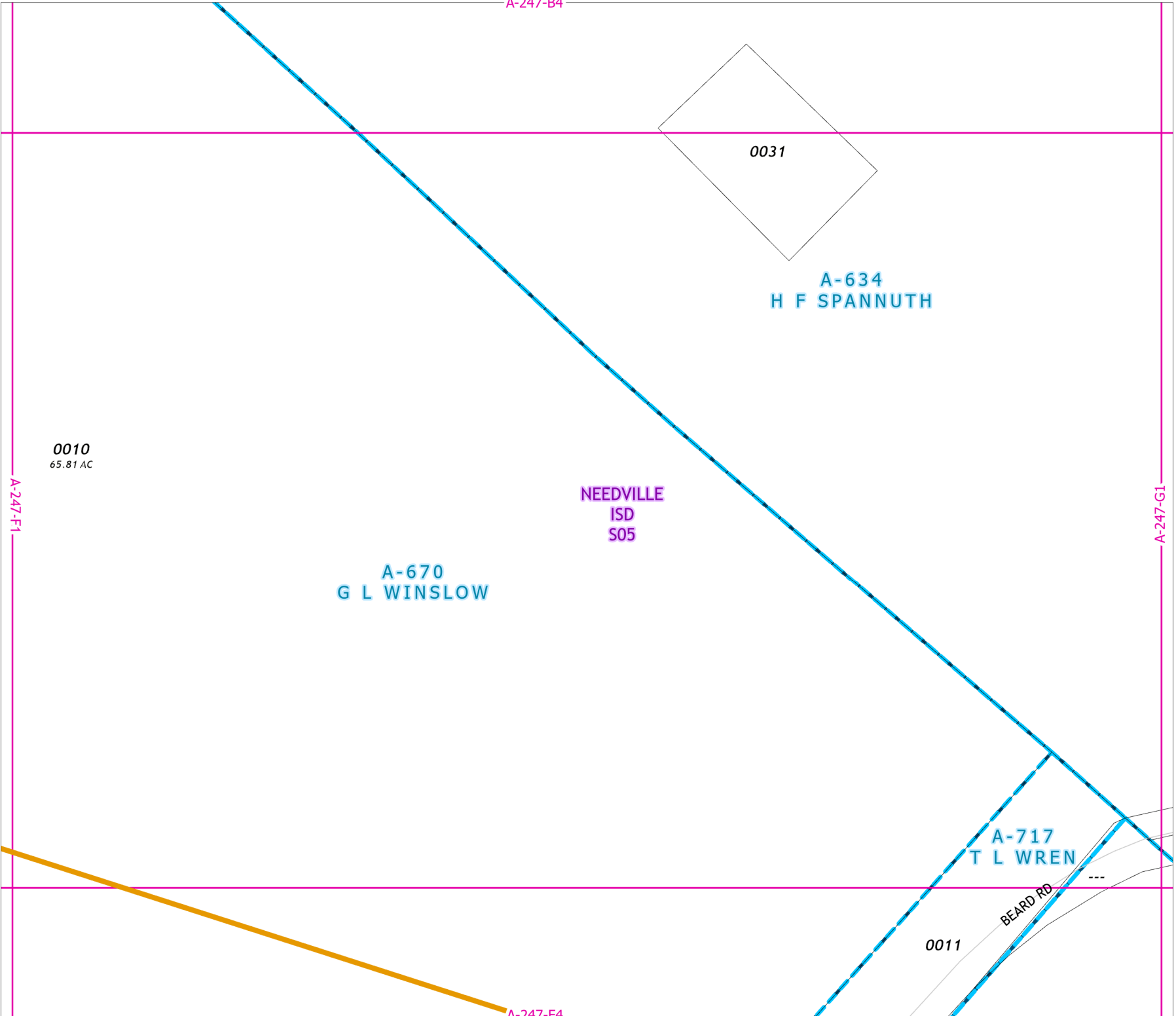
Fort Bend Central Appraisal District (FBCAD) is not authorized to determine legal title to property or establish the legal boundaries of property. FBCAD establishes appraisal records based on information from various sources, including but not limited to deeds, plats and surveys provided to but not created by the district. FBCAD is not responsible for errors or omissions in information submitted to and reviewed by the district. If any errors or omission are detected, contact the GIS Department of the FBCAD.

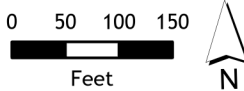
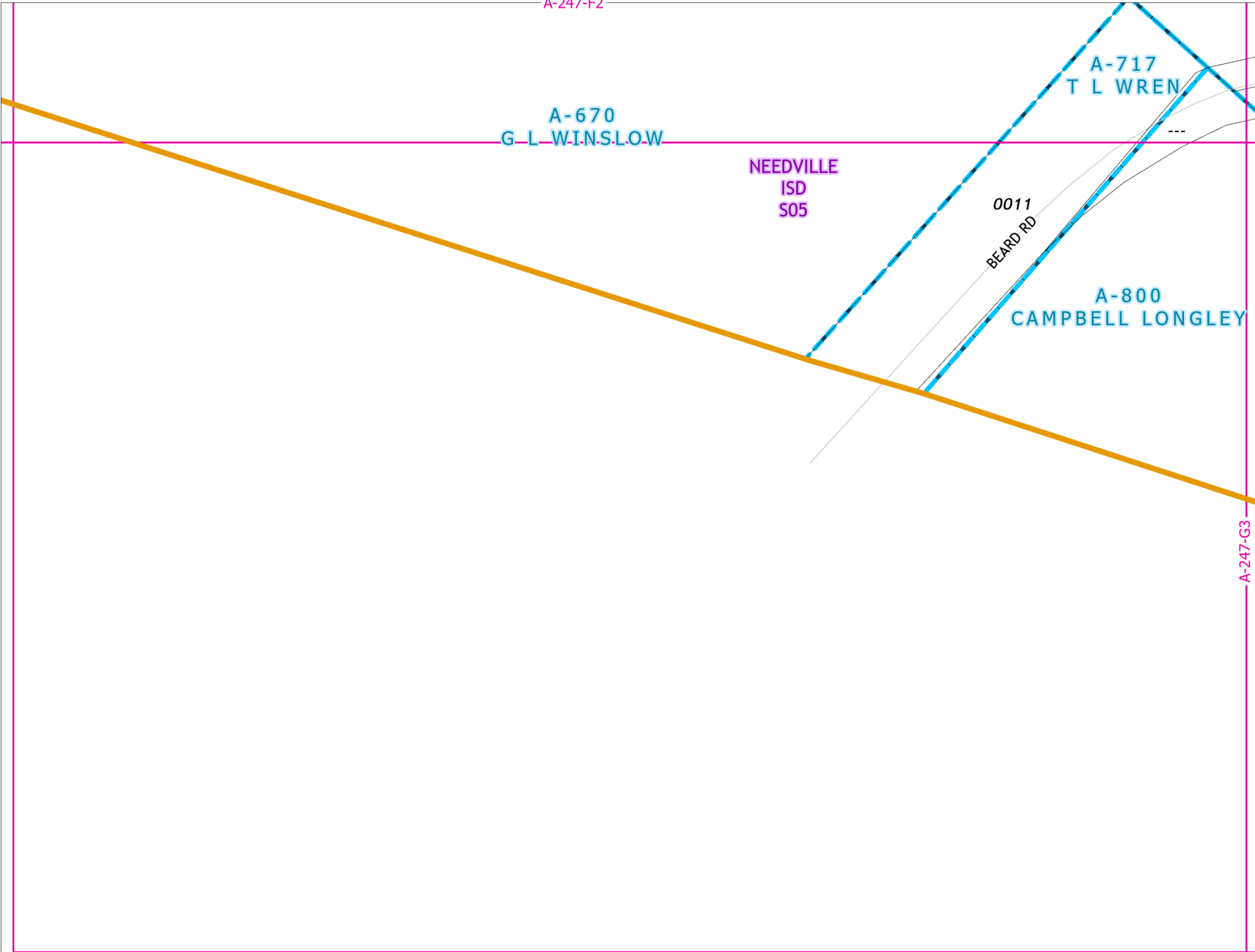


Grid Location Reference

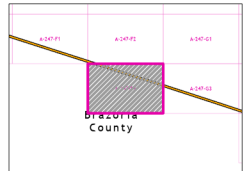


County Location Reference

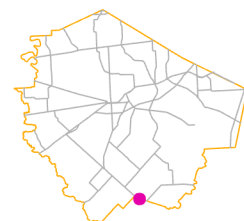




Fort Bend Central Appraisal District (FBCAD) is not authorized to determine legal title to property or establish the legal boundaries of property. FBCAD establishes appraisal records based on information from various sources, including but not limited to deeds, plats and surveys provided to but not created by the district. FBCAD is not responsible for errors or omissions in information submitted to and reviewed by the district. If any errors or omission are detected, contact the GIS Department of the FBCAD.



Grid Location Reference



County Location Reference

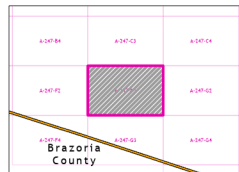
2021 Certified Tax Roll



Grid Page
A-247-G1



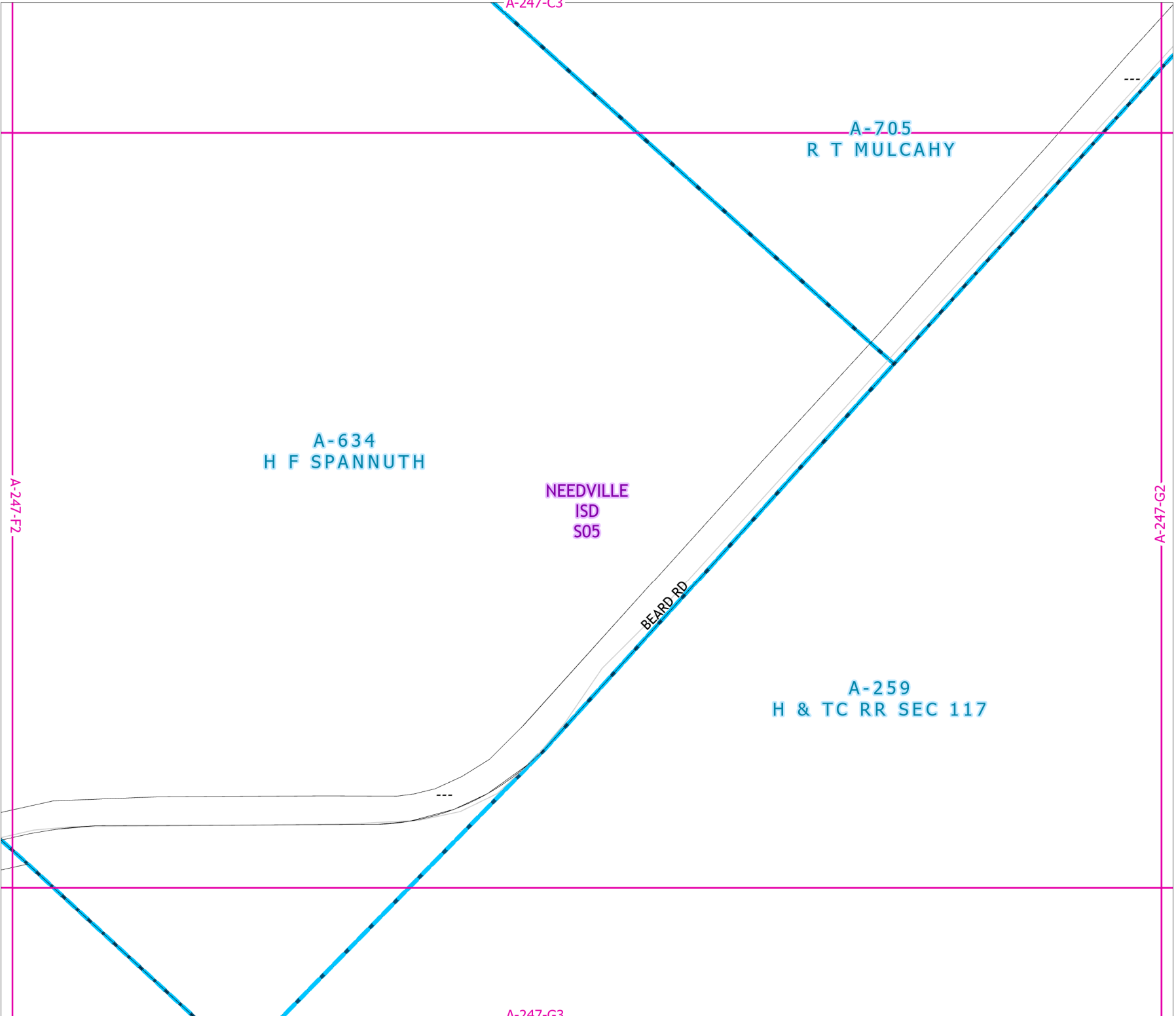
Fort Bend Central Appraisal District (FBCAD) is not authorized to determine legal title to property or establish the legal boundaries of property. FBCAD establishes appraisal records based on information from various sources, including but not limited to deeds, plats and surveys provided to but not created by the district. FBCAD is not responsible for errors or omissions in information submitted to and reviewed by the district. If any errors or omission are detected, contact the GIS Department of the FBCAD.



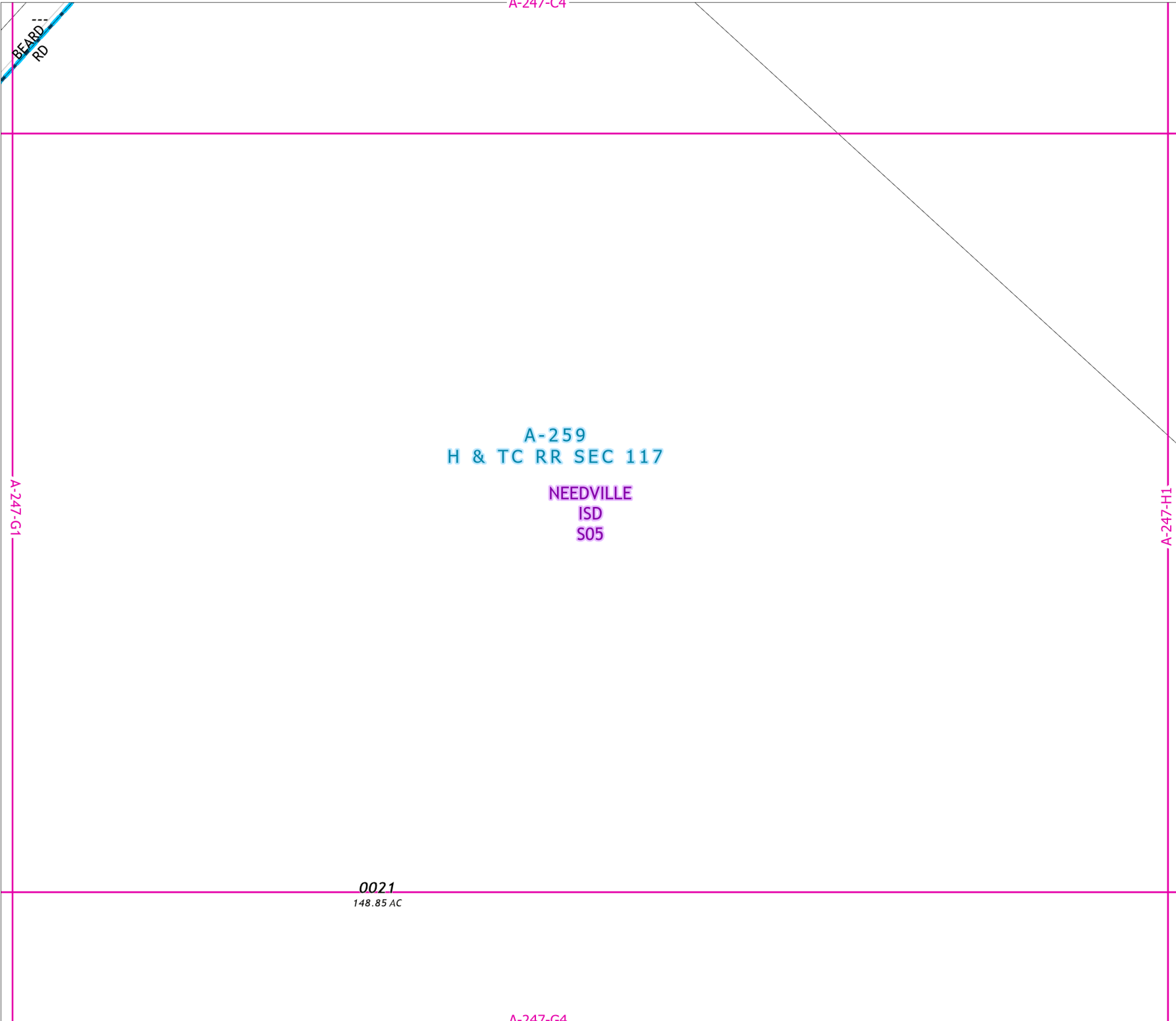
Grid Location Reference



County Location Reference



A-247-C4



A-259
 H & TC RR SEC 117
 NEEDVILLE
 ISD
 S05

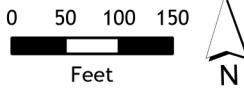
0021
 148.85 AC

A-247-G4

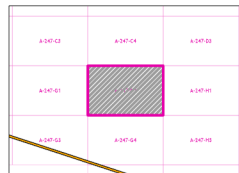
2021 Certified Tax Roll



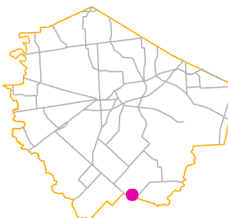
Grid Page
 A-247-G2



Fort Bend Central Appraisal District (FBCAD) is not authorized to determine legal title to property or establish the legal boundaries of property. FBCAD establishes appraisal records based on information from various sources, including but not limited to deeds, plats and surveys provided to but not created by the district. FBCAD is not responsible for errors or omissions in information submitted to and reviewed by the district. If any errors or omission are detected, contact the GIS Department of the FBCAD.



Grid Location Reference



County Location Reference

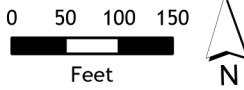
A-247-G1

A-247-H1

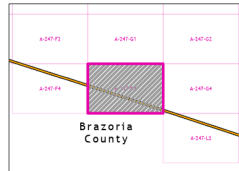
2021 Certified Tax Roll



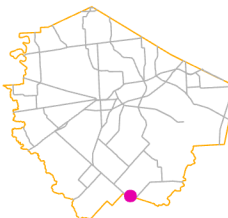
Grid Page
A-247-G3



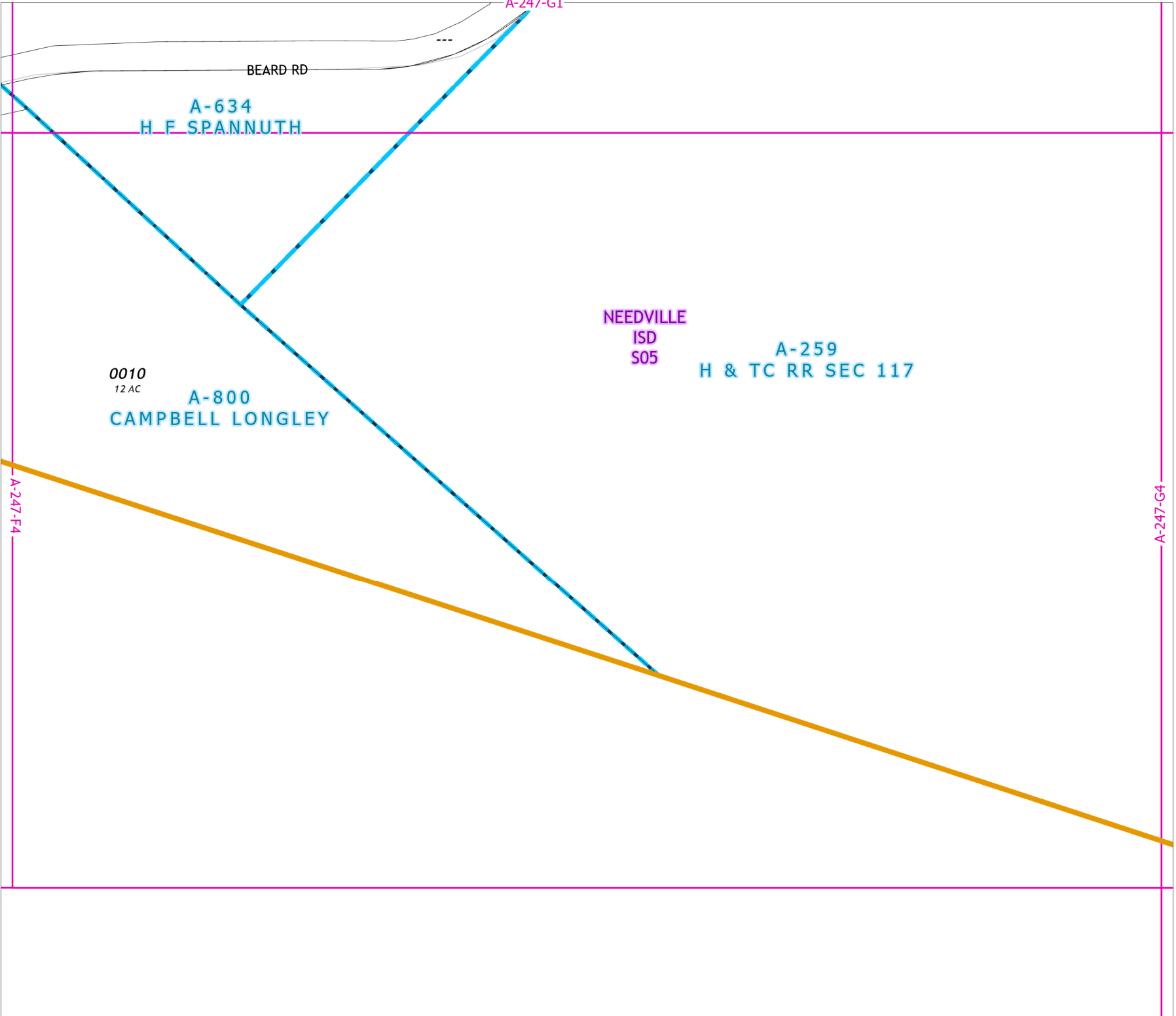
Fort Bend Central Appraisal District (FBCAD) is not authorized to determine legal title to property or establish the legal boundaries of property. FBCAD establishes appraisal records based on information from various sources, including but not limited to deeds, plats and surveys provided to but not created by the district. FBCAD is not responsible for errors or omissions in information submitted to and reviewed by the district. If any errors or omission are detected, contact the GIS Department of the FBCAD.



Grid Location Reference



County Location Reference



2021 Certified Tax Roll



Grid Page
A-247-G4

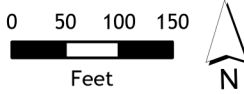
0021
148.85 AC

NEEDVILLE
ISD
S05

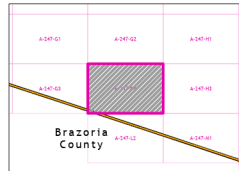
A-259
H & TC RR SEC 117

A-247-G3

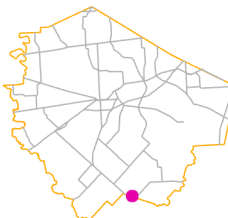
A-247-H3



Fort Bend Central Appraisal District (FBCAD) is not authorized to determine legal title to property or establish the legal boundaries of property. FBCAD establishes appraisal records based on information from various sources, including but not limited to deeds, plats and surveys provided to but not created by the district. FBCAD is not responsible for errors or omissions in information submitted to and reviewed by the district. If any errors or omission are detected, contact the GIS Department of the FBCAD.



Grid Location Reference



County Location Reference

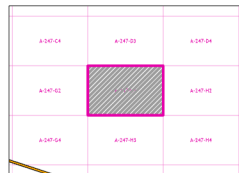
2021 Certified Tax Roll



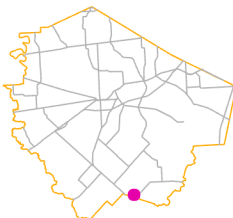
**Grid Page
A-247-H1**



Fort Bend Central Appraisal District (FBCAD) is not authorized to determine legal title to property or establish the legal boundaries of property. FBCAD establishes appraisal records based on information from various sources, including but not limited to deeds, plats and surveys provided to but not created by the district. FBCAD is not responsible for errors or omissions in information submitted to and reviewed by the district. If any errors or omission are detected, contact the GIS Department of the FBCAD.



Grid Location Reference



County Location Reference

A-247-D3

**A-259
H & TC RR SEC 117**

**NEEDVILLE
ISD
S05**

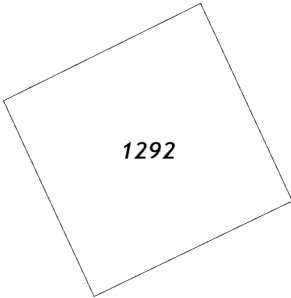
A-247-G2

A-247-H2

A-247-H3



**Grid Page
A-247-H2**

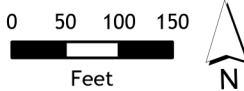


1292

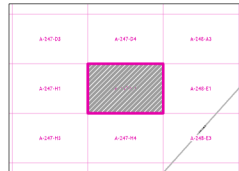
**A-259
H & TC RR SEC 117**

**NEEDVILLE
ISD
S05**

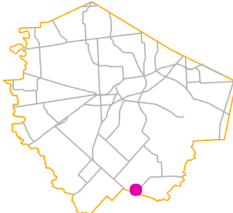
**1290
199.5974 AC**



Fort Bend Central Appraisal District (FBCAD) is not authorized to determine legal title to property or establish the legal boundaries of property. FBCAD establishes appraisal records based on information from various sources, including but not limited to deeds, plats and surveys provided to but not created by the district. FBCAD is not responsible for errors or omissions in information submitted to and reviewed by the district. If any errors or omission are detected, contact the GIS Department of the FBCAD.



Grid Location Reference



County Location Reference

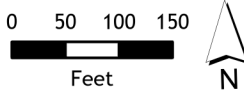
2021 Certified Tax Roll



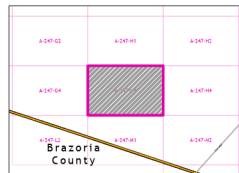
**Grid Page
A-247-H3**

**A-259
H & TC RR SEC 117**

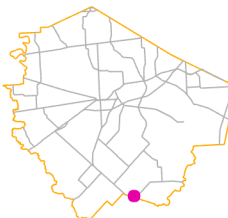
**NEEDVILLE
ISD
S05**



Fort Bend Central Appraisal District (FBCAD) is not authorized to determine legal title to property or establish the legal boundaries of property. FBCAD establishes appraisal records based on information from various sources, including but not limited to deeds, plats and surveys provided to but not created by the district. FBCAD is not responsible for errors or omissions in information submitted to and reviewed by the district. If any errors or omission are detected, contact the GIS Department of the FBCAD.



Grid Location Reference



County Location Reference

**0560
30.13 AC**

A-247-H1

A-247-G4

A-247-H4

A-247-M1



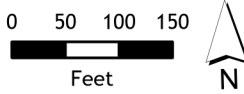
**Grid Page
A-247-H4**

**A-259
H & TC RR SEC 117**

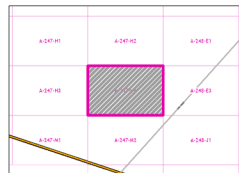
**NEEDVILLE
ISD
S05**

A-247-H3

A-248-E3



Fort Bend Central Appraisal District (FBCAD) is not authorized to determine legal title to property or establish the legal boundaries of property. FBCAD establishes appraisal records based on information from various sources, including but not limited to deeds, plats and surveys provided to but not created by the district. FBCAD is not responsible for errors or omissions in information submitted to and reviewed by the district. If any errors or omission are detected, contact the GIS Department of the FBCAD.



Grid Location Reference



County Location Reference

2021 Certified Tax Roll



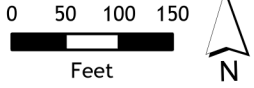
Grid Page
A-247-L2

NEEDVILLE

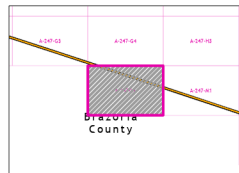
ISD
S05

A-259
H & TC RR SEC 117

A-247-M1



Fort Bend Central Appraisal District (FBCAD) is not authorized to determine legal title to property or establish the legal boundaries of property. FBCAD establishes appraisal records based on information from various sources, including but not limited to deeds, plats and surveys provided to but not created by the district. FBCAD is not responsible for errors or omissions in information submitted to and reviewed by the district. If any errors or omission are detected, contact the GIS Department of the FBCAD.



Grid Location Reference



County Location Reference

A-247-H3

2021 Certified Tax Roll

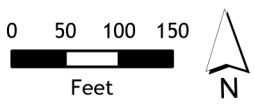


0560
30.13 AC

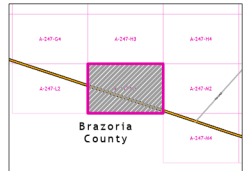
A-259
H & TC RR SEC 117

NEEDVILLE
ISD
S05
0690
44.95 AC

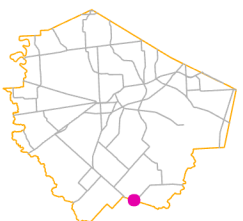
Grid Page
A-247-M1



Fort Bend Central Appraisal District (FBCAD) is not authorized to determine legal title to property or establish the legal boundaries of property. FBCAD establishes appraisal records based on information from various sources, including but not limited to deeds, plats and surveys provided to but not created by the district. FBCAD is not responsible for errors or omissions in information submitted to and reviewed by the district. If any errors or omission are detected, contact the GIS Department of the FBCAD.



Grid Location Reference



County Location Reference

A-247-L2

A-247-M2



A-247-M1

A-248-J1

A-259
H & TC RR SEC 117
NEEDVILLE
ISD
S05

0561

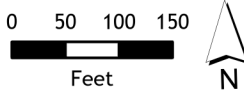
FM 1462 RD

0025
8.5656 AC

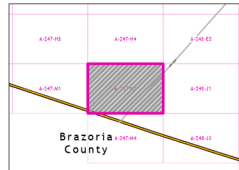
A-449
DAY LAND & CATTLE

A-800
CAMPBELL LONGLEY

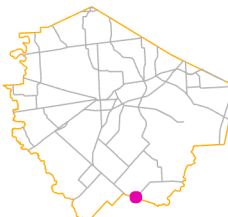
NORDT RD



Fort Bend Central Appraisal District (FBCAD) is not authorized to determine legal title to property or establish the legal boundaries of property. FBCAD establishes appraisal records based on information from various sources, including but not limited to deeds, plats and surveys provided to but not created by the district. FBCAD is not responsible for errors or omissions in information submitted to and reviewed by the district. If any errors or omission are detected, contact the GIS Department of the FBCAD.



Grid Location Reference

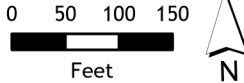
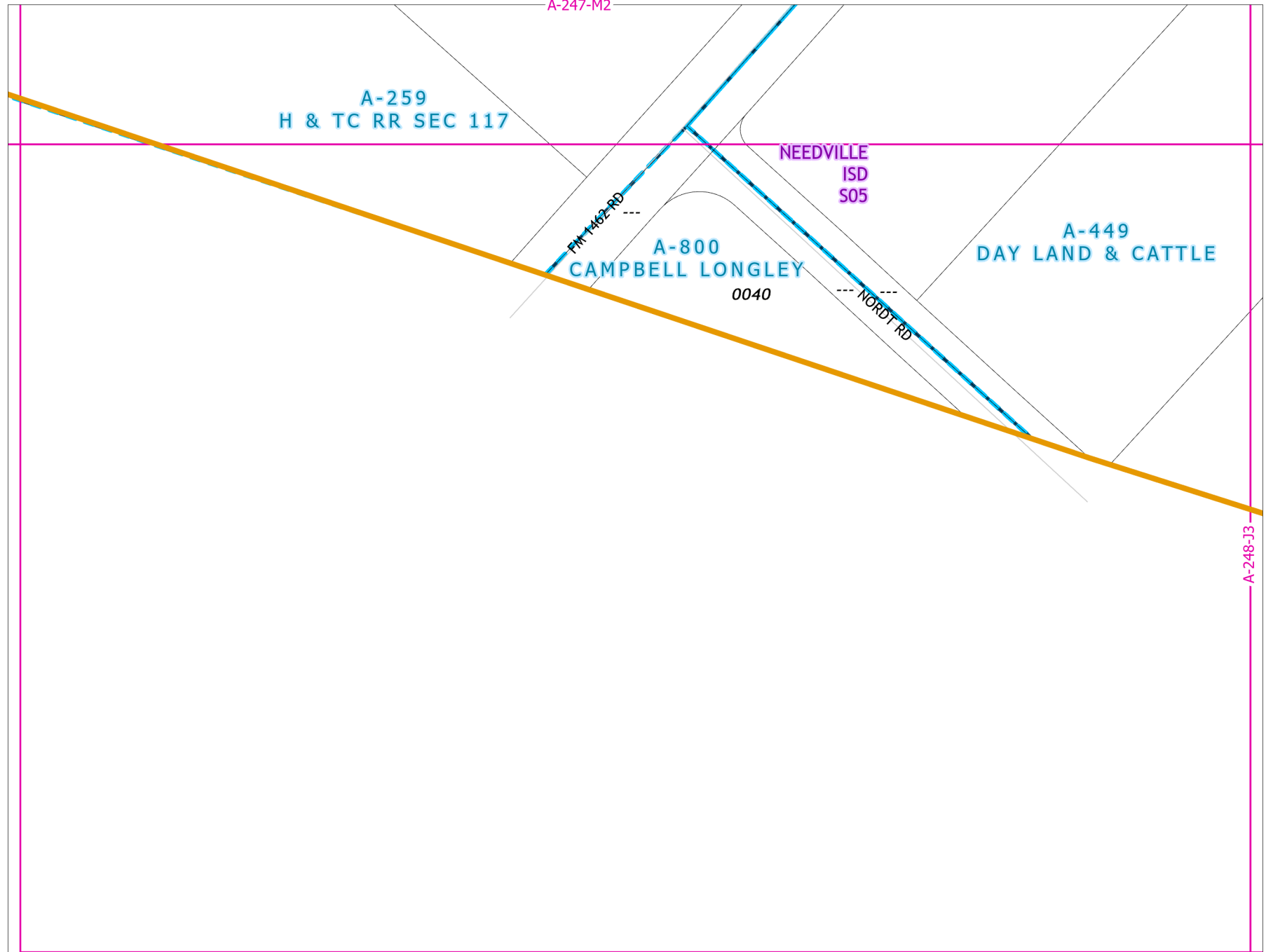


County Location Reference

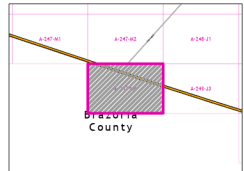
2021 Certified Tax Roll



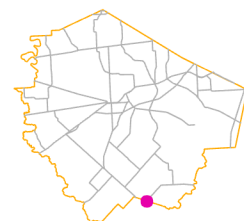
Grid Page
A-247-M4



Fort Bend Central Appraisal District (FBCAD) is not authorized to determine legal title to property or establish the legal boundaries of property. FBCAD establishes appraisal records based on information from various sources, including but not limited to deeds, plats and surveys provided to but not created by the district. FBCAD is not responsible for errors or omissions in information submitted to and reviewed by the district. If any errors or omission are detected, contact the GIS Department of the FBCAD.



Grid Location Reference



County Location Reference