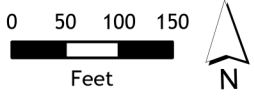


A-108-Q3

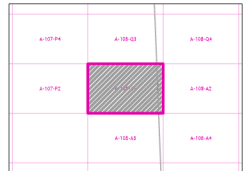
# 2021 Certified Tax Roll



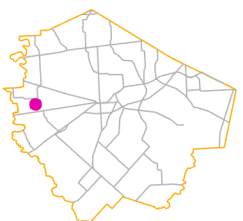
Grid Page  
A-108-A1



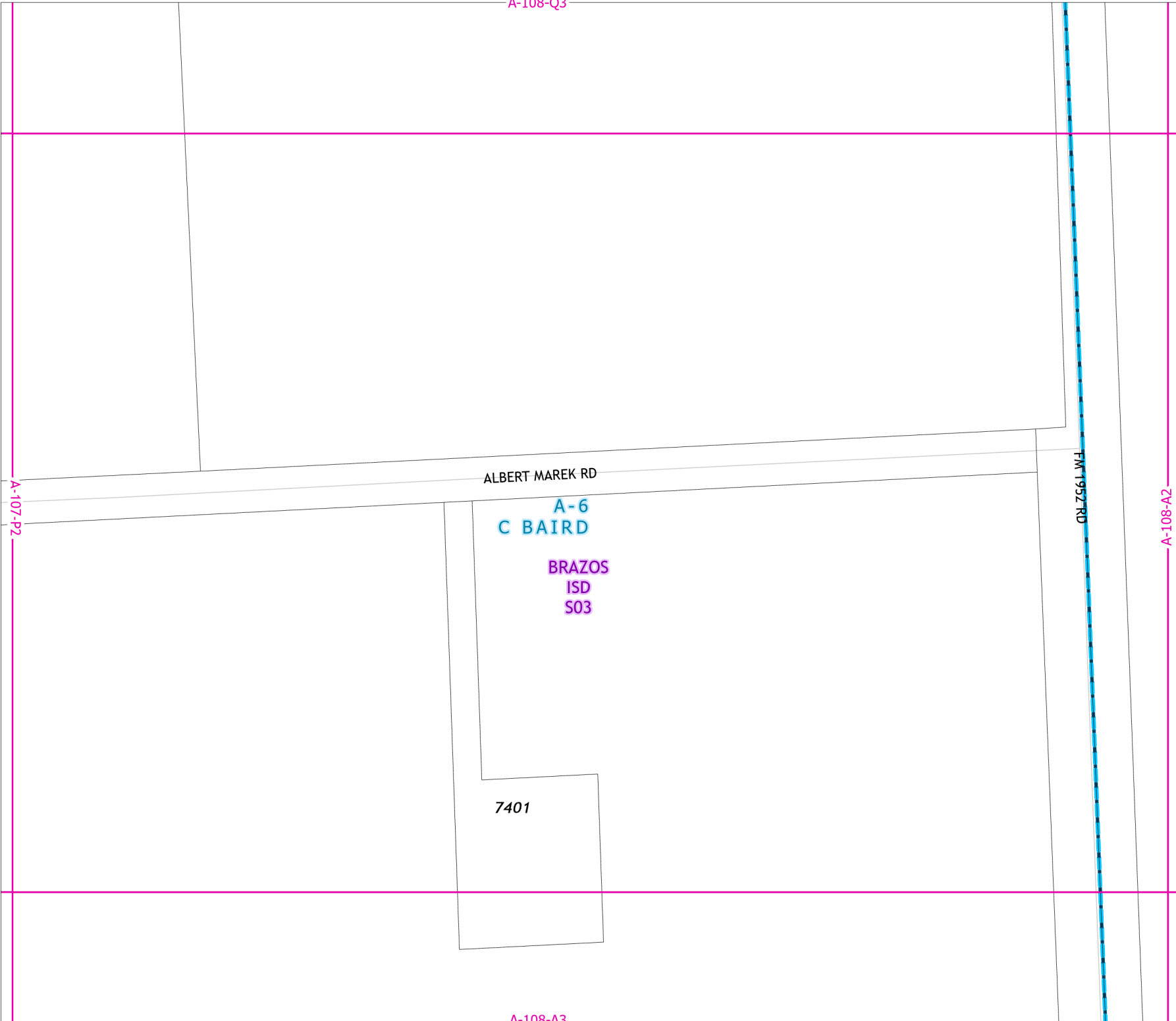
Fort Bend Central Appraisal District (FBCAD) is not authorized to determine legal title to property or establish the legal boundaries of property. FBCAD establishes appraisal records based on information from various sources, including but not limited to deeds, plats and surveys provided to but not created by the district. FBCAD is not responsible for errors or omissions in information submitted to and reviewed by the district. If any errors or omission are detected, contact the GIS Department of the FBCAD.



Grid Location Reference



County Location Reference



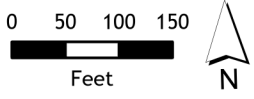
# 2021 Certified Tax Roll



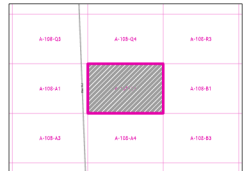
## Grid Page A-108-A2

A-314  
MARK SMITH

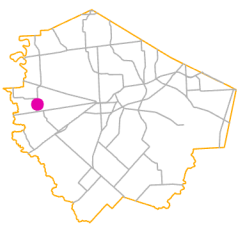
BRAZOS  
ISD  
S03



Fort Bend Central Appraisal District (FBCAD) is not authorized to determine legal title to property or establish the legal boundaries of property. FBCAD establishes appraisal records based on information from various sources, including but not limited to deeds, plats and surveys provided to but not created by the district. FBCAD is not responsible for errors or omissions in information submitted to and reviewed by the district. If any errors or omission are detected, contact the GIS Department of the FBCAD.



Grid Location Reference

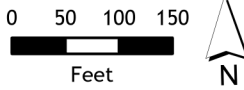


County Location Reference

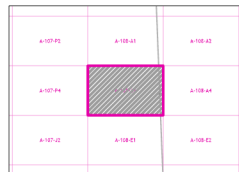
# 2021 Certified Tax Roll



Grid Page  
A-108-A3



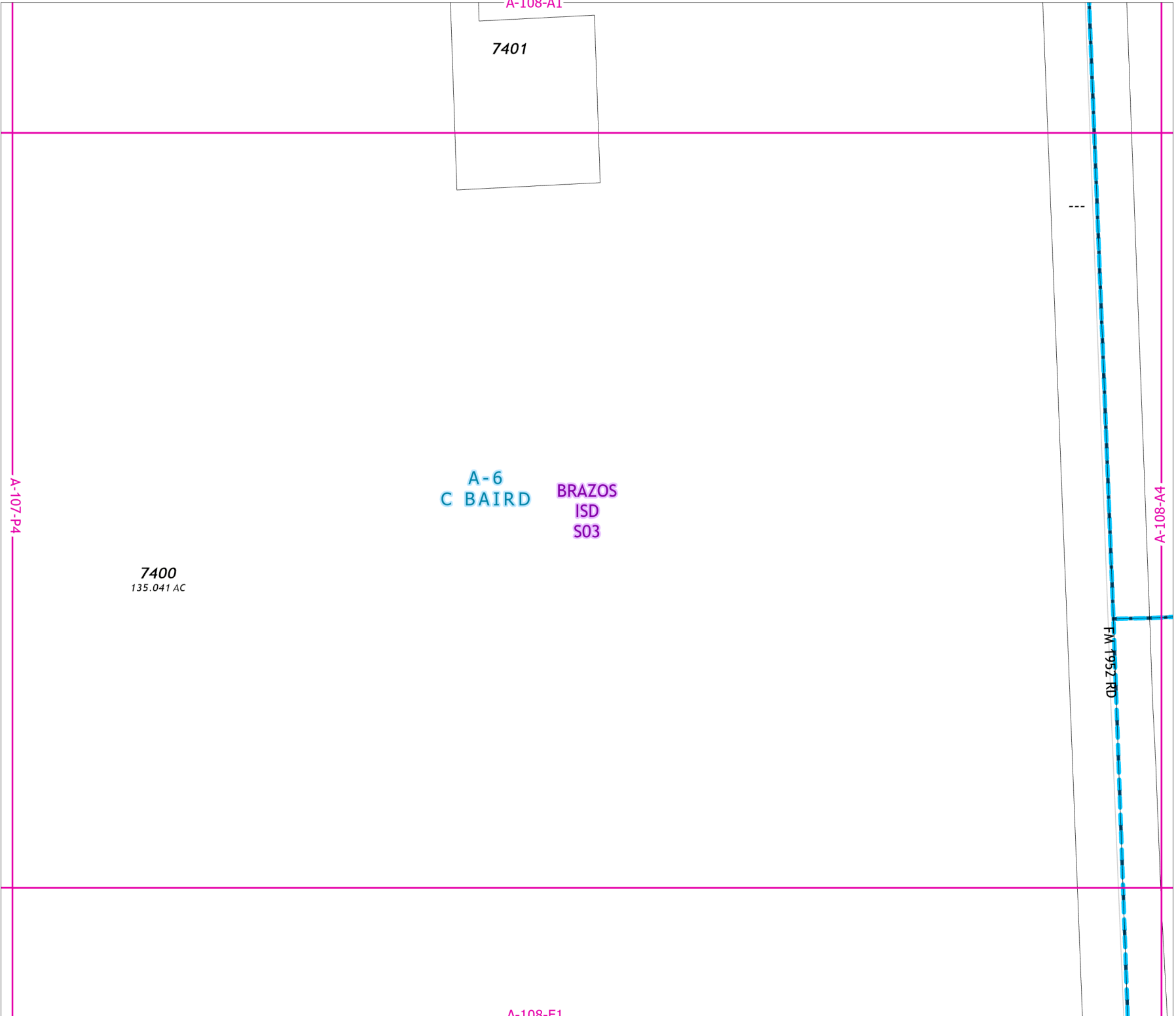
Fort Bend Central Appraisal District (FBCAD) is not authorized to determine legal title to property or establish the legal boundaries of property. FBCAD establishes appraisal records based on information from various sources, including but not limited to deeds, plats and surveys provided to but not created by the district. FBCAD is not responsible for errors or omissions in information submitted to and reviewed by the district. If any errors or omission are detected, contact the GIS Department of the FBCAD.



Grid Location Reference



County Location Reference



A-108-A2

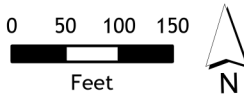
# 2021 Certified Tax Roll



Grid Page  
A-108-A4

A-314  
MARK SMITH

BRAZOS  
ISD  
S03



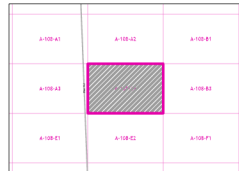
Fort Bend Central Appraisal District (FBCAD) is not authorized to determine legal title to property or establish the legal boundaries of property. FBCAD establishes appraisal records based on information from various sources, including but not limited to deeds, plats and surveys provided to but not created by the district. FBCAD is not responsible for errors or omissions in information submitted to and reviewed by the district. If any errors or omission are detected, contact the GIS Department of the FBCAD.

A-108-A3

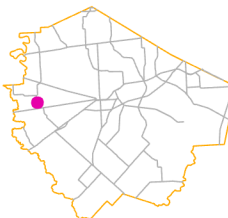
A-108-B3

A-302  
M PERRY

19-005-0800  
50 AC



Grid Location Reference



County Location Reference

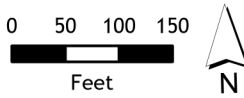
A-108-E2



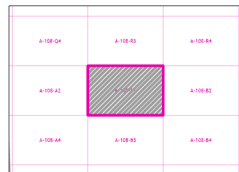
A-314  
MARK SMITH

BRAZOS  
ISD  
S03

A-119  
BBB & C RR



Fort Bend Central Appraisal District (FBCAD) is not authorized to determine legal title to property or establish the legal boundaries of property. FBCAD establishes appraisal records based on information from various sources, including but not limited to deeds, plats and surveys provided to but not created by the district. FBCAD is not responsible for errors or omissions in information submitted to and reviewed by the district. If any errors or omission are detected, contact the GIS Department of the FBCAD.



Grid Location Reference



County Location Reference

# 2021 Certified Tax Roll



Grid Page  
A-108-B2

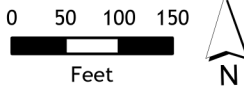
A-314  
MARK SMITH

BRAZOS  
ISD  
S03

A-119  
BBB & C RR

A-108-B1

A-108-C1



Fort Bend Central Appraisal District (FBCAD) is not authorized to determine legal title to property or establish the legal boundaries of property. FBCAD establishes appraisal records based on information from various sources, including but not limited to deeds, plats and surveys provided to but not created by the district. FBCAD is not responsible for errors or omissions in information submitted to and reviewed by the district. If any errors or omission are detected, contact the GIS Department of the FBCAD.

A-108-B3	A-108-B4	A-108-B5
A-108-B1	A-108-B2	A-108-B1
A-108-B3	A-108-B4	A-108-B5

Grid Location Reference

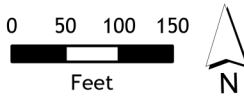


County Location Reference

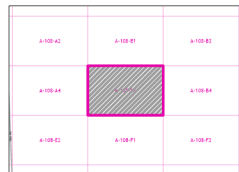
# 2021 Certified Tax Roll



## Grid Page A-108-B3



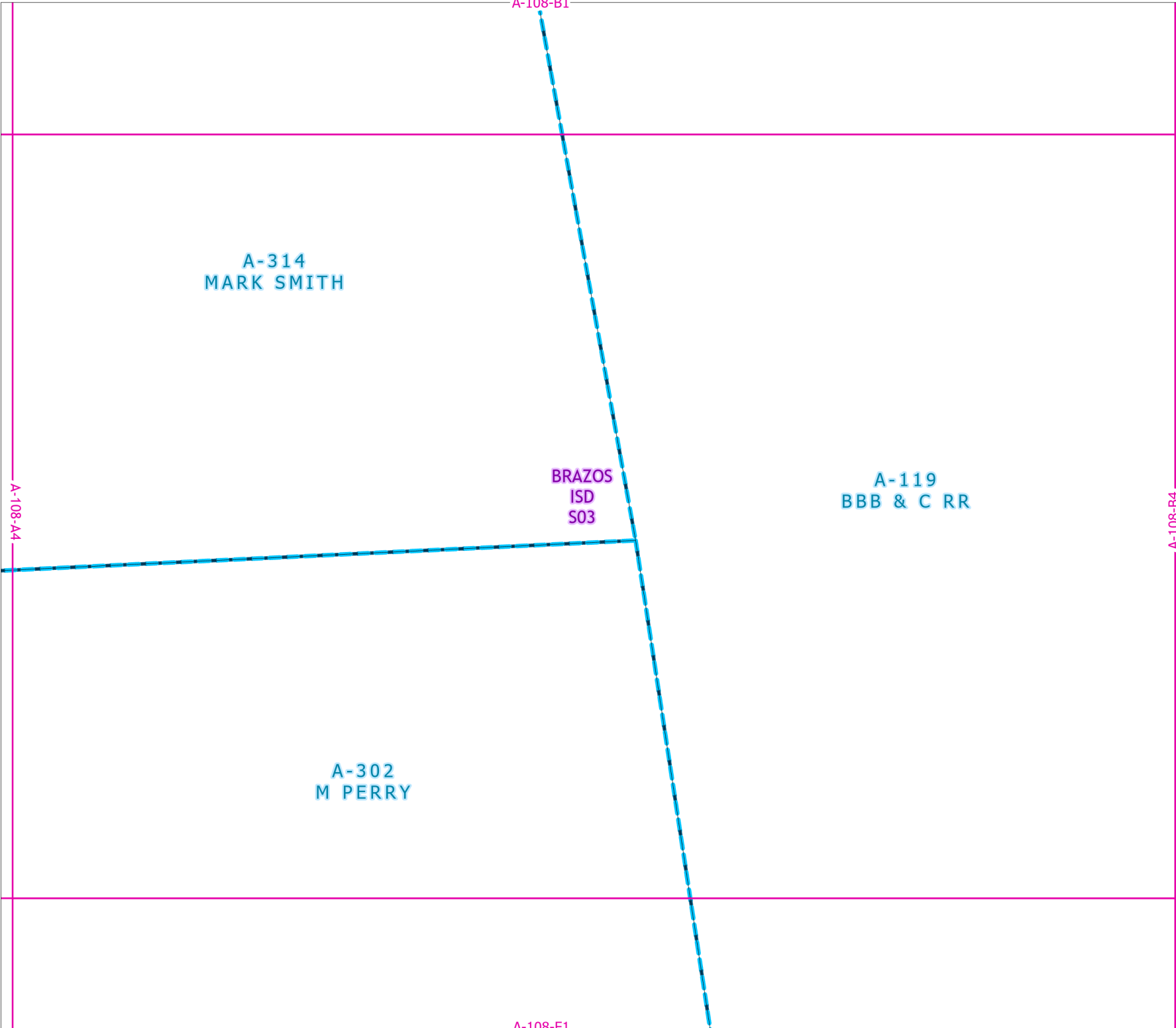
Fort Bend Central Appraisal District (FBCAD) is not authorized to determine legal title to property or establish the legal boundaries of property. FBCAD establishes appraisal records based on information from various sources, including but not limited to deeds, plats and surveys provided to but not created by the district. FBCAD is not responsible for errors or omissions in information submitted to and reviewed by the district. If any errors or omission are detected, contact the GIS Department of the FBCAD.



Grid Location Reference



County Location Reference

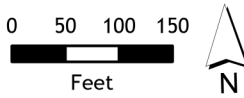


# 2021 Certified Tax Roll

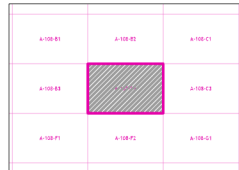


**Grid Page  
A-108-B4**

**A-119  
BBB & C RR  
BRAZOS  
ISD  
S03**



Fort Bend Central Appraisal District (FBCAD) is not authorized to determine legal title to property or establish the legal boundaries of property. FBCAD establishes appraisal records based on information from various sources, including but not limited to deeds, plats and surveys provided to but not created by the district. FBCAD is not responsible for errors or omissions in information submitted to and reviewed by the district. If any errors or omission are detected, contact the GIS Department of the FBCAD.



Grid Location Reference



County Location Reference



A-108-N3

A-314  
MARK SMITH

BRAZOS  
ISD  
S03

A-119  
BBB & C RR

A-108-B2

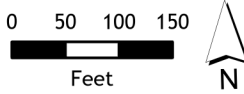
A-108-C2

A-108-C3

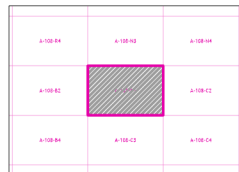
# 2021 Certified Tax Roll



Grid Page  
A-108-C1



Fort Bend Central Appraisal District (FBCAD) is not authorized to determine legal title to property or establish the legal boundaries of property. FBCAD establishes appraisal records based on information from various sources, including but not limited to deeds, plats and surveys provided to but not created by the district. FBCAD is not responsible for errors or omissions in information submitted to and reviewed by the district. If any errors or omission are detected, contact the GIS Department of the FBCAD.



Grid Location Reference



County Location Reference

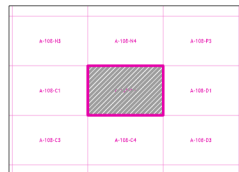
# 2021 Certified Tax Roll



Grid Page  
A-108-C2



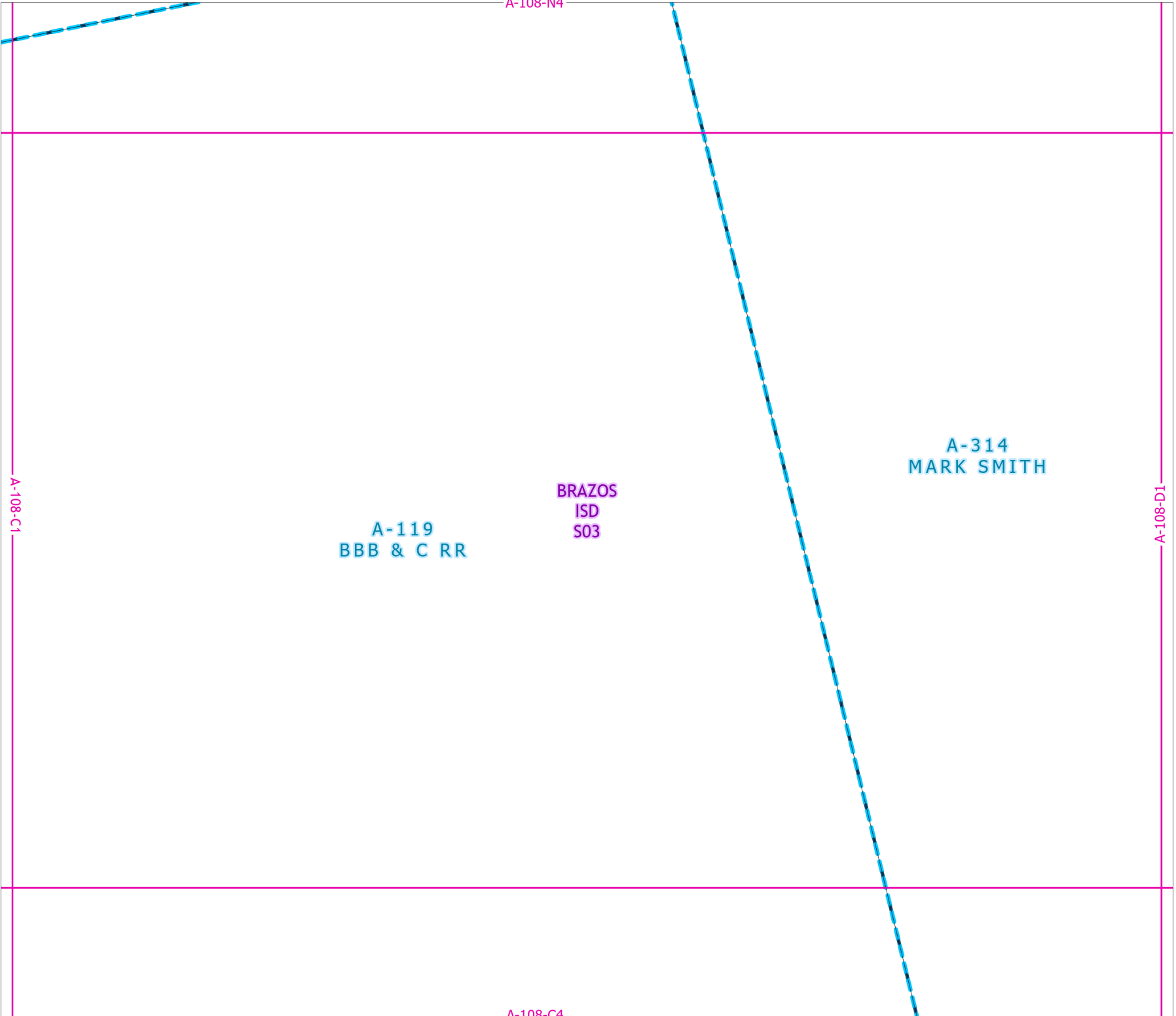
Fort Bend Central Appraisal District (FBCAD) is not authorized to determine legal title to property or establish the legal boundaries of property. FBCAD establishes appraisal records based on information from various sources, including but not limited to deeds, plats and surveys provided to but not created by the district. FBCAD is not responsible for errors or omissions in information submitted to and reviewed by the district. If any errors or omission are detected, contact the GIS Department of the FBCAD.



Grid Location Reference



County Location Reference



A-108-C1

# 2021 Certified Tax Roll

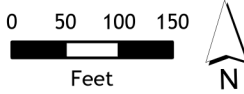


**Grid Page  
A-108-C3**

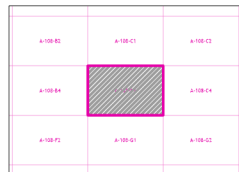
**A-119  
BBB & C RR  
BRAZOS  
ISD  
S03**

A-108-B4

A-108-C4



Fort Bend Central Appraisal District (FBCAD) is not authorized to determine legal title to property or establish the legal boundaries of property. FBCAD establishes appraisal records based on information from various sources, including but not limited to deeds, plats and surveys provided to but not created by the district. FBCAD is not responsible for errors or omissions in information submitted to and reviewed by the district. If any errors or omission are detected, contact the GIS Department of the FBCAD.



Grid Location Reference



County Location Reference

A-108-G1

A-108-C2

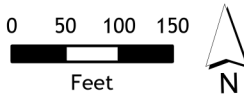
# 2021 Certified Tax Roll



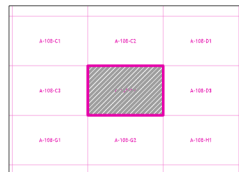
Grid Page  
A-108-C4

A-314  
MARK SMITH

A-119  
BBB & C RR  
BRAZOS  
ISD  
S03



Fort Bend Central Appraisal District (FBCAD) is not authorized to determine legal title to property or establish the legal boundaries of property. FBCAD establishes appraisal records based on information from various sources, including but not limited to deeds, plats and surveys provided to but not created by the district. FBCAD is not responsible for errors or omissions in information submitted to and reviewed by the district. If any errors or omission are detected, contact the GIS Department of the FBCAD.



Grid Location Reference



County Location Reference

A-108-C3

A-108-D3

A-108-G2

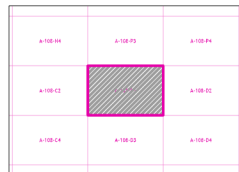
# 2021 Certified Tax Roll



Grid Page  
A-108-D1



Fort Bend Central Appraisal District (FBCAD) is not authorized to determine legal title to property or establish the legal boundaries of property. FBCAD establishes appraisal records based on information from various sources, including but not limited to deeds, plats and surveys provided to but not created by the district. FBCAD is not responsible for errors or omissions in information submitted to and reviewed by the district. If any errors or omission are detected, contact the GIS Department of the FBCAD.



Grid Location Reference



County Location Reference

A-108-P3

A-108-C2

A-314  
MARK SMITH

BRAZOS  
ISD  
S03

A-173  
JAMES FRAZIER

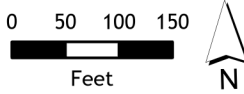
A-108-D2

A-108-D3

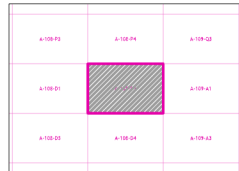
# 2021 Certified Tax Roll



**Grid Page  
A-108-D2**



Fort Bend Central Appraisal District (FBCAD) is not authorized to determine legal title to property or establish the legal boundaries of property. FBCAD establishes appraisal records based on information from various sources, including but not limited to deeds, plats and surveys provided to but not created by the district. FBCAD is not responsible for errors or omissions in information submitted to and reviewed by the district. If any errors or omission are detected, contact the GIS Department of the FBCAD.



Grid Location Reference



County Location Reference

**BRAZOS**  
**ISD**      **A-173**  
**S03**      **JAMES FRAZIER**

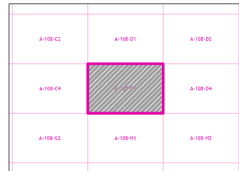
# 2021 Certified Tax Roll



Grid Page  
A-108-D3



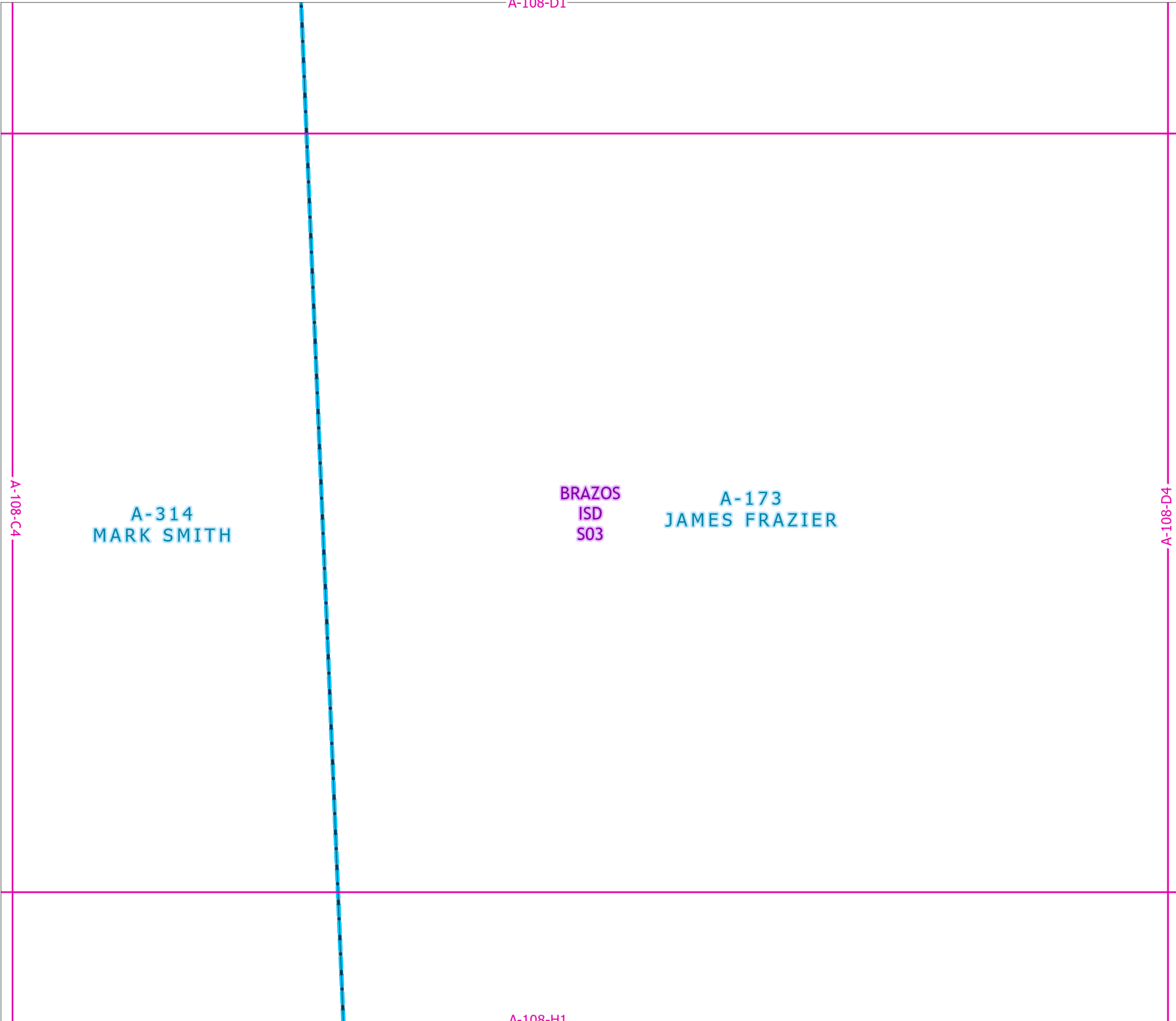
Fort Bend Central Appraisal District (FBCAD) is not authorized to determine legal title to property or establish the legal boundaries of property. FBCAD establishes appraisal records based on information from various sources, including but not limited to deeds, plats and surveys provided to but not created by the district. FBCAD is not responsible for errors or omissions in information submitted to and reviewed by the district. If any errors or omission are detected, contact the GIS Department of the FBCAD.



Grid Location Reference



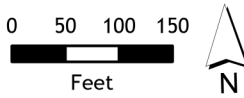
County Location Reference



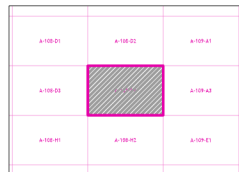


**Grid Page  
A-108-D4**

**A-173  
JAMES FRAZIER**  
**BRAZOS  
ISD  
S03**



Fort Bend Central Appraisal District (FBCAD) is not authorized to determine legal title to property or establish the legal boundaries of property. FBCAD establishes appraisal records based on information from various sources, including but not limited to deeds, plats and surveys provided to but not created by the district. FBCAD is not responsible for errors or omissions in information submitted to and reviewed by the district. If any errors or omission are detected, contact the GIS Department of the FBCAD.



Grid Location Reference



County Location Reference

**A-185  
WM GOODMAN**



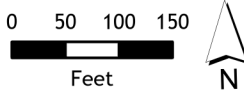
A-108-A3

# 2021 Certified Tax Roll

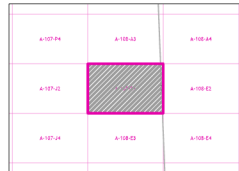


Grid Page  
A-108-E1

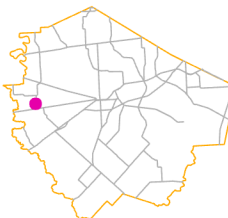
A-6  
C BAIRD BRAZOS  
ISD  
S03



Fort Bend Central Appraisal District (FBCAD) is not authorized to determine legal title to property or establish the legal boundaries of property. FBCAD establishes appraisal records based on information from various sources, including but not limited to deeds, plats and surveys provided to but not created by the district. FBCAD is not responsible for errors or omissions in information submitted to and reviewed by the district. If any errors or omission are detected, contact the GIS Department of the FBCAD.



Grid Location Reference



County Location Reference

A-107-J2

A-108-E2  
FM 1952 RD

A-108-E3



19-005-0800  
50 AC

BRAZOS  
ISD  
S03

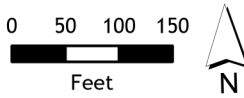
A-302  
M PERRY

19-002-9001

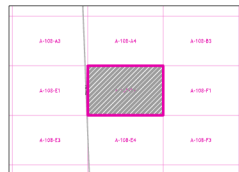
19-002-9000  
48.135 AC

A-108-E1

A-108-E1



Fort Bend Central Appraisal District (FBCAD) is not authorized to determine legal title to property or establish the legal boundaries of property. FBCAD establishes appraisal records based on information from various sources, including but not limited to deeds, plats and surveys provided to but not created by the district. FBCAD is not responsible for errors or omissions in information submitted to and reviewed by the district. If any errors or omission are detected, contact the GIS Department of the FBCAD.



Grid Location Reference



County Location Reference

A-108-E1

A-107-J4

# 2021 Certified Tax Roll



**Grid Page  
A-108-E3**

**02-001-6800**  
31.67 AC

**A-6  
C BAIRD**

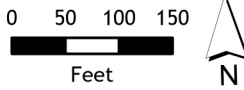
**BRAZOS  
ISD  
S03**

**3800**  
5 AC

**4801**

**4800**  
7.23 AC

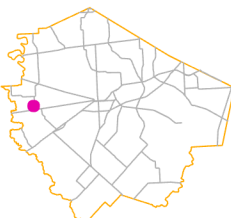
FM 1952 RD  
A-108-E4



Fort Bend Central Appraisal District (FBCAD) is not authorized to determine legal title to property or establish the legal boundaries of property. FBCAD establishes appraisal records based on information from various sources, including but not limited to deeds, plats and surveys provided to but not created by the district. FBCAD is not responsible for errors or omissions in information submitted to and reviewed by the district. If any errors or omission are detected, contact the GIS Department of the FBCAD.

A-107-E2	A-108-E1	A-108-E2
A-107-E4	A-108-E3	A-108-E4
A-108-E2	A-108-E1	A-108-E2

Grid Location Reference



County Location Reference

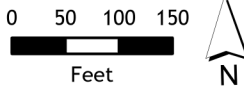
A-124-R1

A-108-E2

# 2021 Certified Tax Roll



Grid Page  
A-108-E4



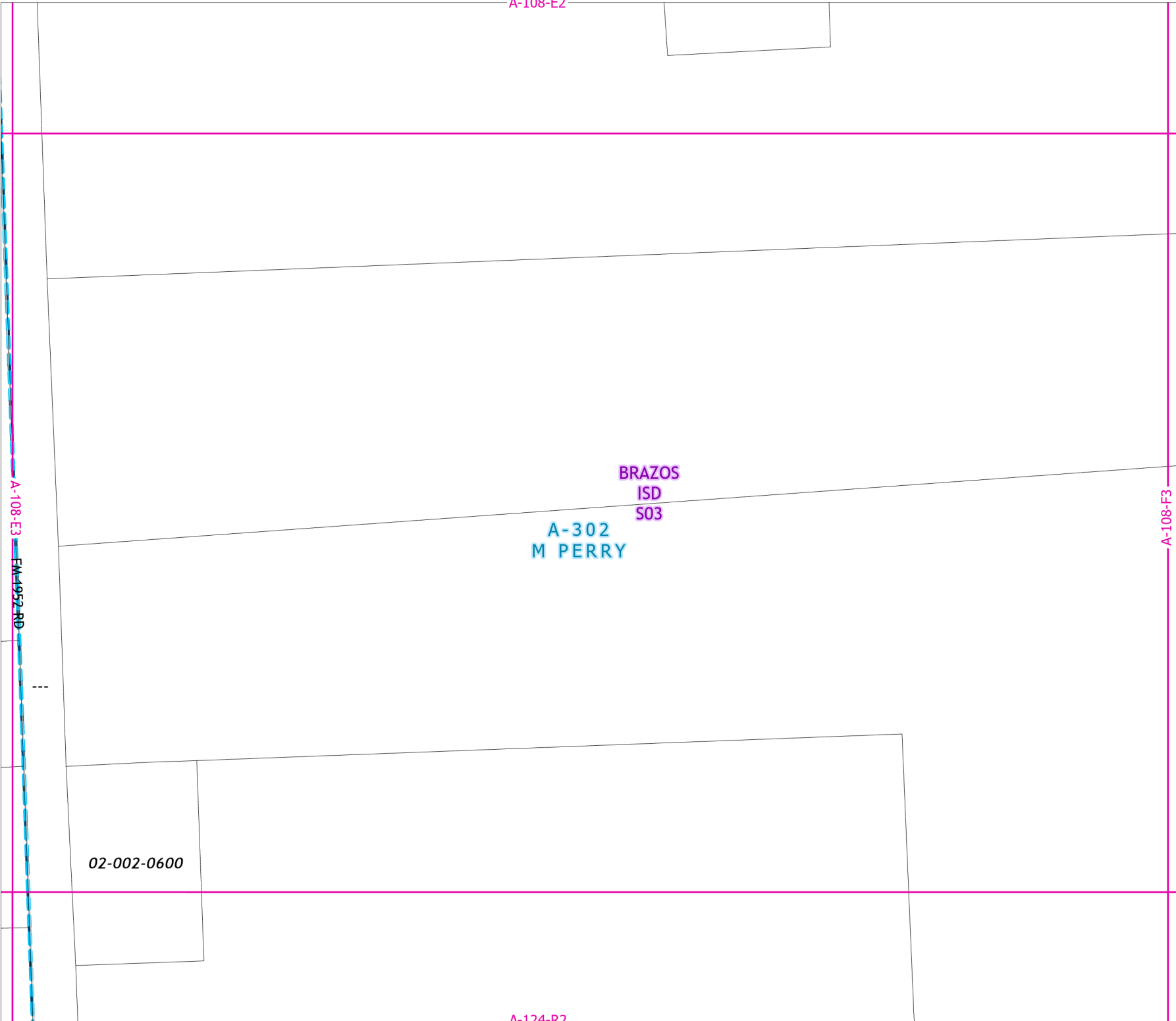
Fort Bend Central Appraisal District (FBCAD) is not authorized to determine legal title to property or establish the legal boundaries of property. FBCAD establishes appraisal records based on information from various sources, including but not limited to deeds, plats and surveys provided to but not created by the district. FBCAD is not responsible for errors or omissions in information submitted to and reviewed by the district. If any errors or omission are detected, contact the GIS Department of the FBCAD.

A-108-E1	A-108-E2	A-108-E3
A-108-E4	A-108-E4	A-108-E5
A-124-R1	A-124-R2	A-124-R3

Grid Location Reference



County Location Reference



A-302  
M PERRY

BRAZOS  
ISD  
S03

02-002-0600

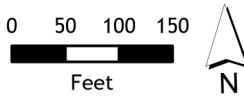
A-124-R2

A-108-E3  
FM 1957 RD

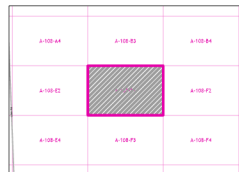
# 2021 Certified Tax Roll



Grid Page  
A-108-F1



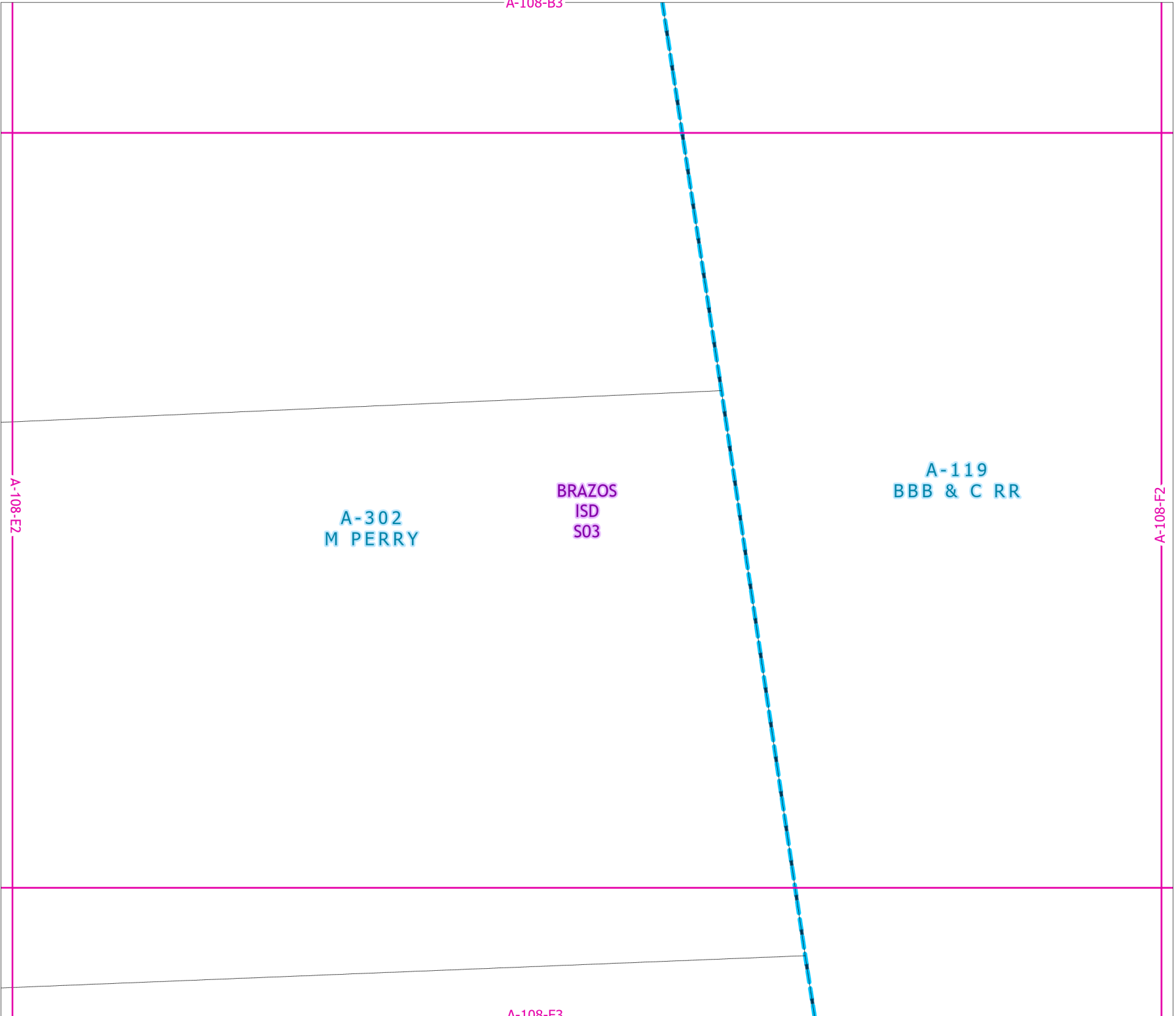
Fort Bend Central Appraisal District (FBCAD) is not authorized to determine legal title to property or establish the legal boundaries of property. FBCAD establishes appraisal records based on information from various sources, including but not limited to deeds, plats and surveys provided to but not created by the district. FBCAD is not responsible for errors or omissions in information submitted to and reviewed by the district. If any errors or omission are detected, contact the GIS Department of the FBCAD.



Grid Location Reference



County Location Reference

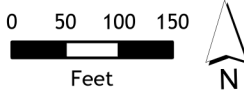


# 2021 Certified Tax Roll

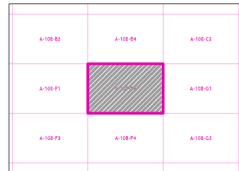


## Grid Page A-108-F2

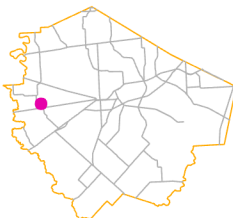
A-119  
BBB & C RR  
BRAZOS  
ISD  
S03



Fort Bend Central Appraisal District (FBCAD) is not authorized to determine legal title to property or establish the legal boundaries of property. FBCAD establishes appraisal records based on information from various sources, including but not limited to deeds, plats and surveys provided to but not created by the district. FBCAD is not responsible for errors or omissions in information submitted to and reviewed by the district. If any errors or omission are detected, contact the GIS Department of the FBCAD.



Grid Location Reference

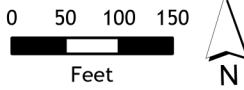


County Location Reference

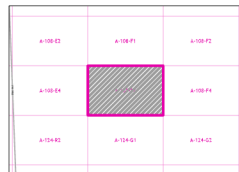
# 2021 Certified Tax Roll



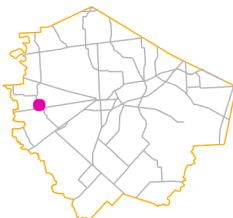
Grid Page  
A-108-F3



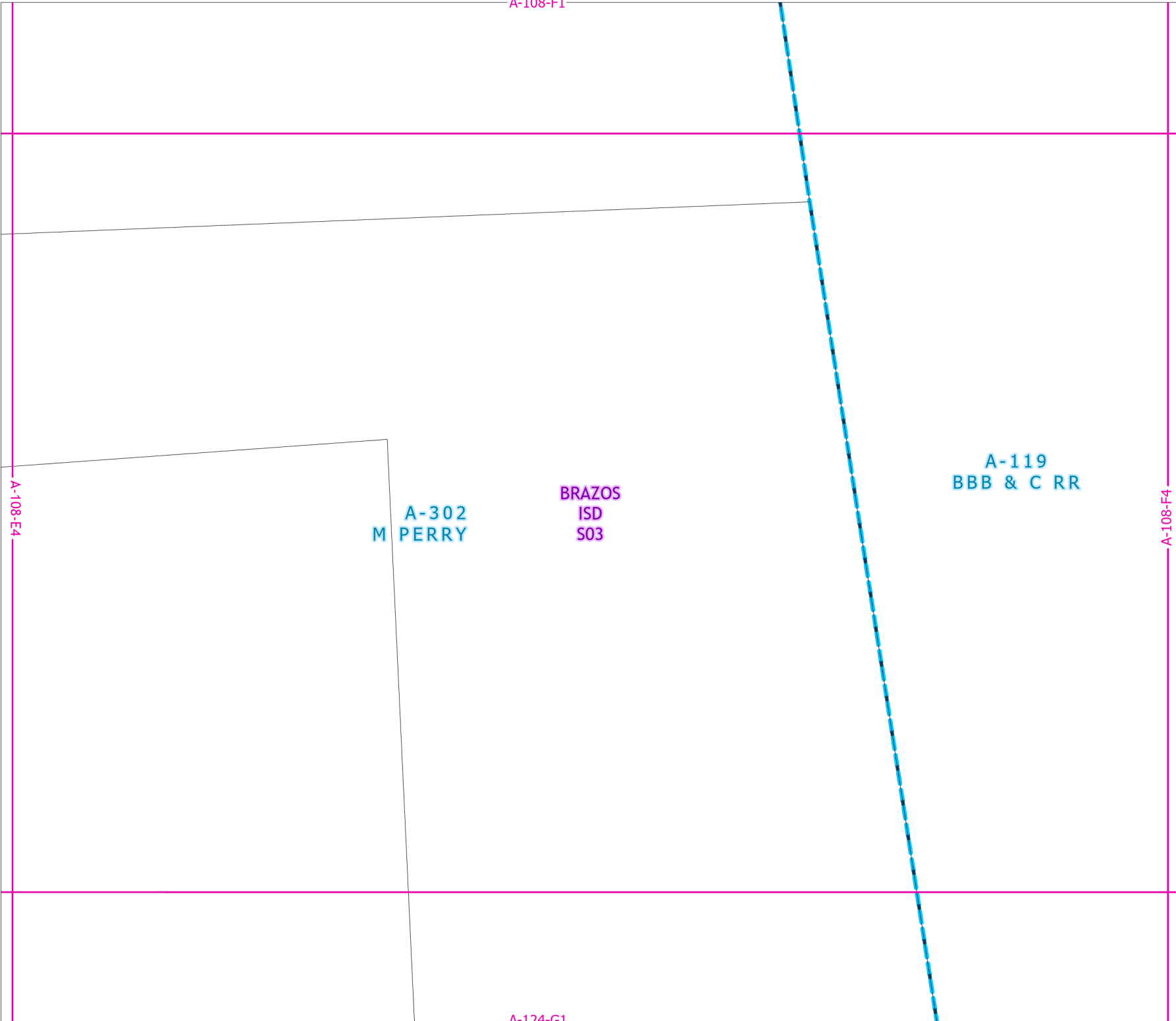
Fort Bend Central Appraisal District (FBCAD) is not authorized to determine legal title to property or establish the legal boundaries of property. FBCAD establishes appraisal records based on information from various sources, including but not limited to deeds, plats and surveys provided to but not created by the district. FBCAD is not responsible for errors or omissions in information submitted to and reviewed by the district. If any errors or omission are detected, contact the GIS Department of the FBCAD.



Grid Location Reference



County Location Reference



# 2021 Certified Tax Roll

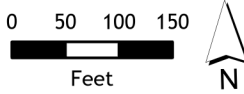


**Grid Page  
A-108-F4**

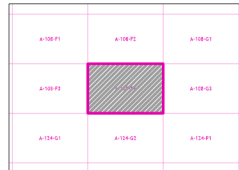
7800  
320 AC

A-119  
BBB & C RR

BRAZOS  
ISD  
S03



Fort Bend Central Appraisal District (FBCAD) is not authorized to determine legal title to property or establish the legal boundaries of property. FBCAD establishes appraisal records based on information from various sources, including but not limited to deeds, plats and surveys provided to but not created by the district. FBCAD is not responsible for errors or omissions in information submitted to and reviewed by the district. If any errors or omission are detected, contact the GIS Department of the FBCAD.



Grid Location Reference



County Location Reference



A-108-C3

# 2021 Certified Tax Roll



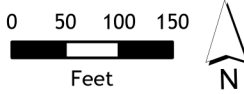
**Grid Page  
A-108-G1**

**A-119  
BBB & C RR**

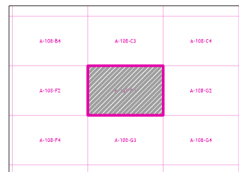
**BRAZOS  
ISD  
S03**

A-108-F2

A-108-G2



Fort Bend Central Appraisal District (FBCAD) is not authorized to determine legal title to property or establish the legal boundaries of property. FBCAD establishes appraisal records based on information from various sources, including but not limited to deeds, plats and surveys provided to but not created by the district. FBCAD is not responsible for errors or omissions in information submitted to and reviewed by the district. If any errors or omission are detected, contact the GIS Department of the FBCAD.



Grid Location Reference



County Location Reference

A-108-G3

A-108-C4

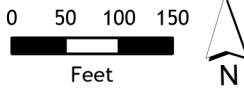
# 2021 Certified Tax Roll



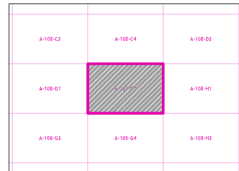
**Grid Page  
A-108-G2**

**A-119  
BBB & C RR  
BRAZOS  
ISD  
S03**

**13-006-1201  
320 AC**



Fort Bend Central Appraisal District (FBCAD) is not authorized to determine legal title to property or establish the legal boundaries of property. FBCAD establishes appraisal records based on information from various sources, including but not limited to deeds, plats and surveys provided to but not created by the district. FBCAD is not responsible for errors or omissions in information submitted to and reviewed by the district. If any errors or omission are detected, contact the GIS Department of the FBCAD.



Grid Location Reference



County Location Reference

A-108-G1

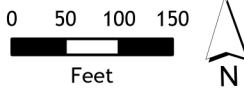
A-108-H1

A-108-G4

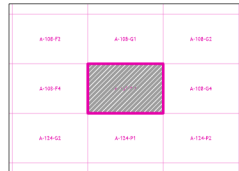
# 2021 Certified Tax Roll



**Grid Page  
A-108-G3**



Fort Bend Central Appraisal District (FBCAD) is not authorized to determine legal title to property or establish the legal boundaries of property. FBCAD establishes appraisal records based on information from various sources, including but not limited to deeds, plats and surveys provided to but not created by the district. FBCAD is not responsible for errors or omissions in information submitted to and reviewed by the district. If any errors or omission are detected, contact the GIS Department of the FBCAD.



Grid Location Reference



County Location Reference

A-108-G1

**A-119  
BBB & C RR**

**BRAZOS  
ISD  
S03**

A-108-F4

A-108-G4

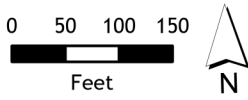
A-124-P1

# 2021 Certified Tax Roll

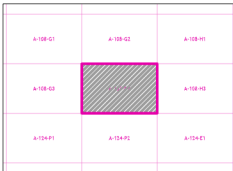


**Grid Page  
A-108-G4**

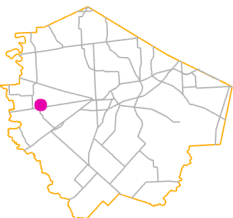
**A-119  
BBB & C RR  
BRAZOS  
ISD  
S03**



Fort Bend Central Appraisal District (FBCAD) is not authorized to determine legal title to property or establish the legal boundaries of property. FBCAD establishes appraisal records based on information from various sources, including but not limited to deeds, plats and surveys provided to but not created by the district. FBCAD is not responsible for errors or omissions in information submitted to and reviewed by the district. If any errors or omission are detected, contact the GIS Department of the FBCAD.



Grid Location Reference

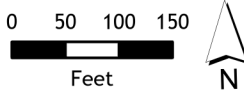


County Location Reference

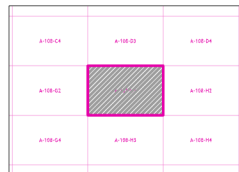
# 2021 Certified Tax Roll



Grid Page  
A-108-H1



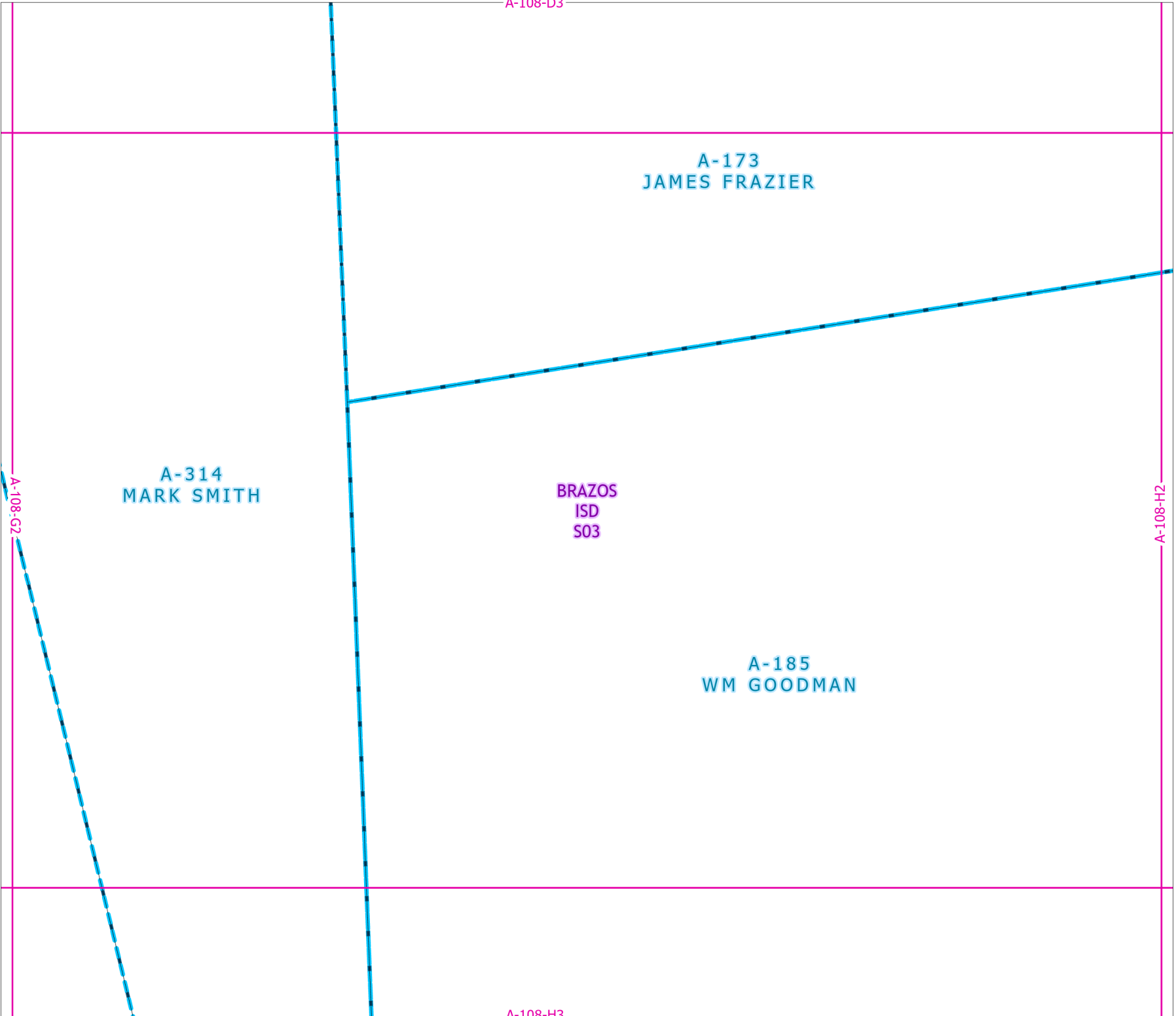
Fort Bend Central Appraisal District (FBCAD) is not authorized to determine legal title to property or establish the legal boundaries of property. FBCAD establishes appraisal records based on information from various sources, including but not limited to deeds, plats and surveys provided to but not created by the district. FBCAD is not responsible for errors or omissions in information submitted to and reviewed by the district. If any errors or omission are detected, contact the GIS Department of the FBCAD.



Grid Location Reference



County Location Reference



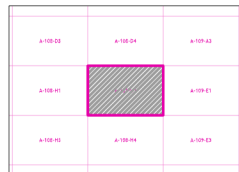
# 2021 Certified Tax Roll



Grid Page  
A-108-H2



Fort Bend Central Appraisal District (FBCAD) is not authorized to determine legal title to property or establish the legal boundaries of property. FBCAD establishes appraisal records based on information from various sources, including but not limited to deeds, plats and surveys provided to but not created by the district. FBCAD is not responsible for errors or omissions in information submitted to and reviewed by the district. If any errors or omission are detected, contact the GIS Department of the FBCAD.



Grid Location Reference



County Location Reference

A-108-D4

A-173  
JAMES FRAZIER

BRAZOS  
ISD  
S03

A-185  
WM GOODMAN

A-108-H1

A-109-E1

A-108-H4

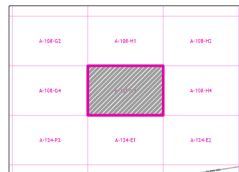
# 2021 Certified Tax Roll



Grid Page  
A-108-H3



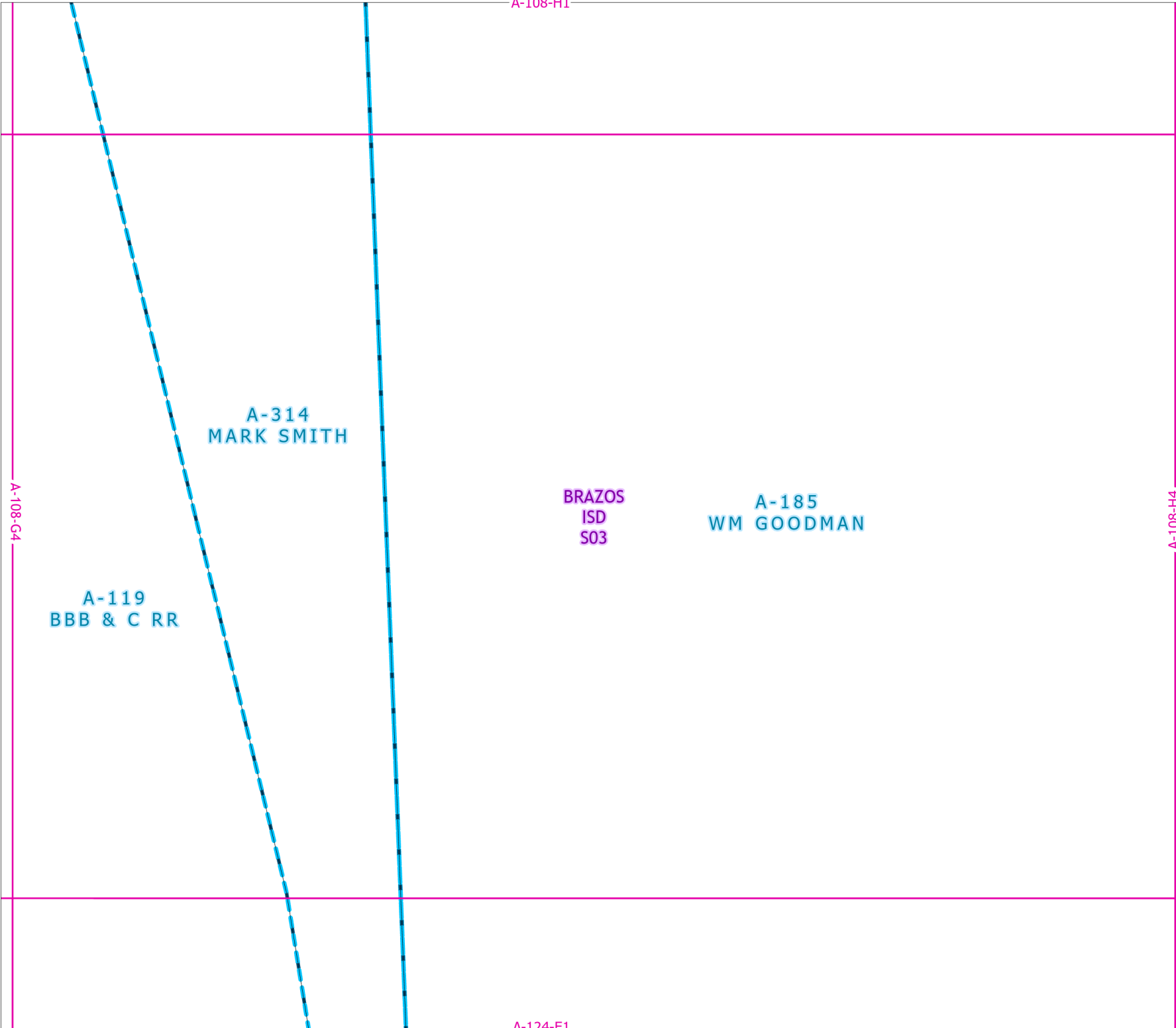
Fort Bend Central Appraisal District (FBCAD) is not authorized to determine legal title to property or establish the legal boundaries of property. FBCAD establishes appraisal records based on information from various sources, including but not limited to deeds, plats and surveys provided to but not created by the district. FBCAD is not responsible for errors or omissions in information submitted to and reviewed by the district. If any errors or omission are detected, contact the GIS Department of the FBCAD.



Grid Location Reference



County Location Reference



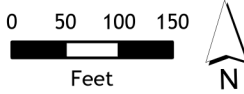
# 2021 Certified Tax Roll



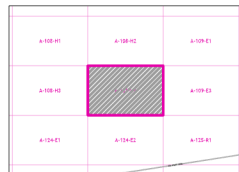
**Grid Page  
A-108-H4**

**A-185  
WM GOODMAN**

**BRAZOS  
ISD 13-006-2201  
S03 280 AC**



Fort Bend Central Appraisal District (FBCAD) is not authorized to determine legal title to property or establish the legal boundaries of property. FBCAD establishes appraisal records based on information from various sources, including but not limited to deeds, plats and surveys provided to but not created by the district. FBCAD is not responsible for errors or omissions in information submitted to and reviewed by the district. If any errors or omission are detected, contact the GIS Department of the FBCAD.



Grid Location Reference



County Location Reference

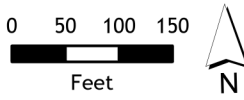


# 2021 Certified Tax Roll

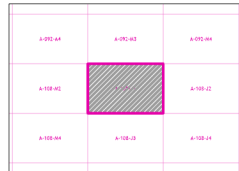


**Grid Page  
A-108-J1**

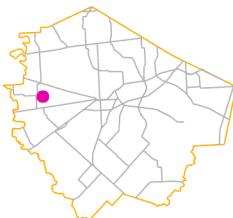
**A-314  
MARK SMITH  
BRAZOS  
ISD  
S03**



Fort Bend Central Appraisal District (FBCAD) is not authorized to determine legal title to property or establish the legal boundaries of property. FBCAD establishes appraisal records based on information from various sources, including but not limited to deeds, plats and surveys provided to but not created by the district. FBCAD is not responsible for errors or omissions in information submitted to and reviewed by the district. If any errors or omission are detected, contact the GIS Department of the FBCAD.



Grid Location Reference



County Location Reference

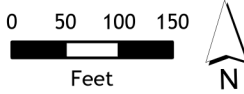
# 2021 Certified Tax Roll



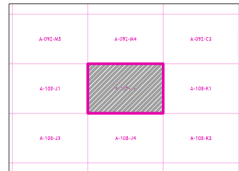
**Grid Page  
A-108-J2**

**A-314  
MARK SMITH**

**BRAZOS  
ISD  
S03**



Fort Bend Central Appraisal District (FBCAD) is not authorized to determine legal title to property or establish the legal boundaries of property. FBCAD establishes appraisal records based on information from various sources, including but not limited to deeds, plats and surveys provided to but not created by the district. FBCAD is not responsible for errors or omissions in information submitted to and reviewed by the district. If any errors or omission are detected, contact the GIS Department of the FBCAD.



Grid Location Reference



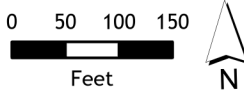
County Location Reference

# 2021 Certified Tax Roll

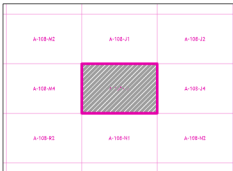


**Grid Page  
A-108-J3**

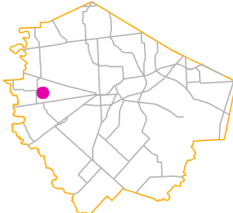
**A-314  
MARK SMITH  
BRAZOS  
ISD  
S03**



Fort Bend Central Appraisal District (FBCAD) is not authorized to determine legal title to property or establish the legal boundaries of property. FBCAD establishes appraisal records based on information from various sources, including but not limited to deeds, plats and surveys provided to but not created by the district. FBCAD is not responsible for errors or omissions in information submitted to and reviewed by the district. If any errors or omission are detected, contact the GIS Department of the FBCAD.



Grid Location Reference



County Location Reference

# 2021 Certified Tax Roll



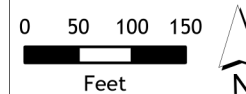
**Grid Page  
A-108-J4**

**A-314  
MARK SMITH**

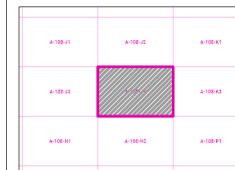
**BRAZOS  
ISD  
S03**

A-108-J3

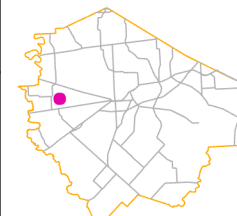
A-108-K3



Fort Bend Central Appraisal District (FBCAD) is not authorized to determine legal title to property or establish the legal boundaries of property. FBCAD establishes appraisal records based on information from various sources, including but not limited to deeds, plats and surveys provided to but not created by the district. FBCAD is not responsible for errors or omissions in information submitted to and reviewed by the district. If any errors or omission are detected, contact the GIS Department of the FBCAD.



Grid Location Reference

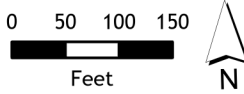


County Location Reference

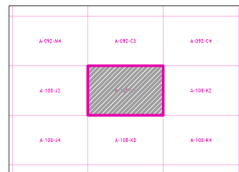
# 2021 Certified Tax Roll



Grid Page  
A-108-K1



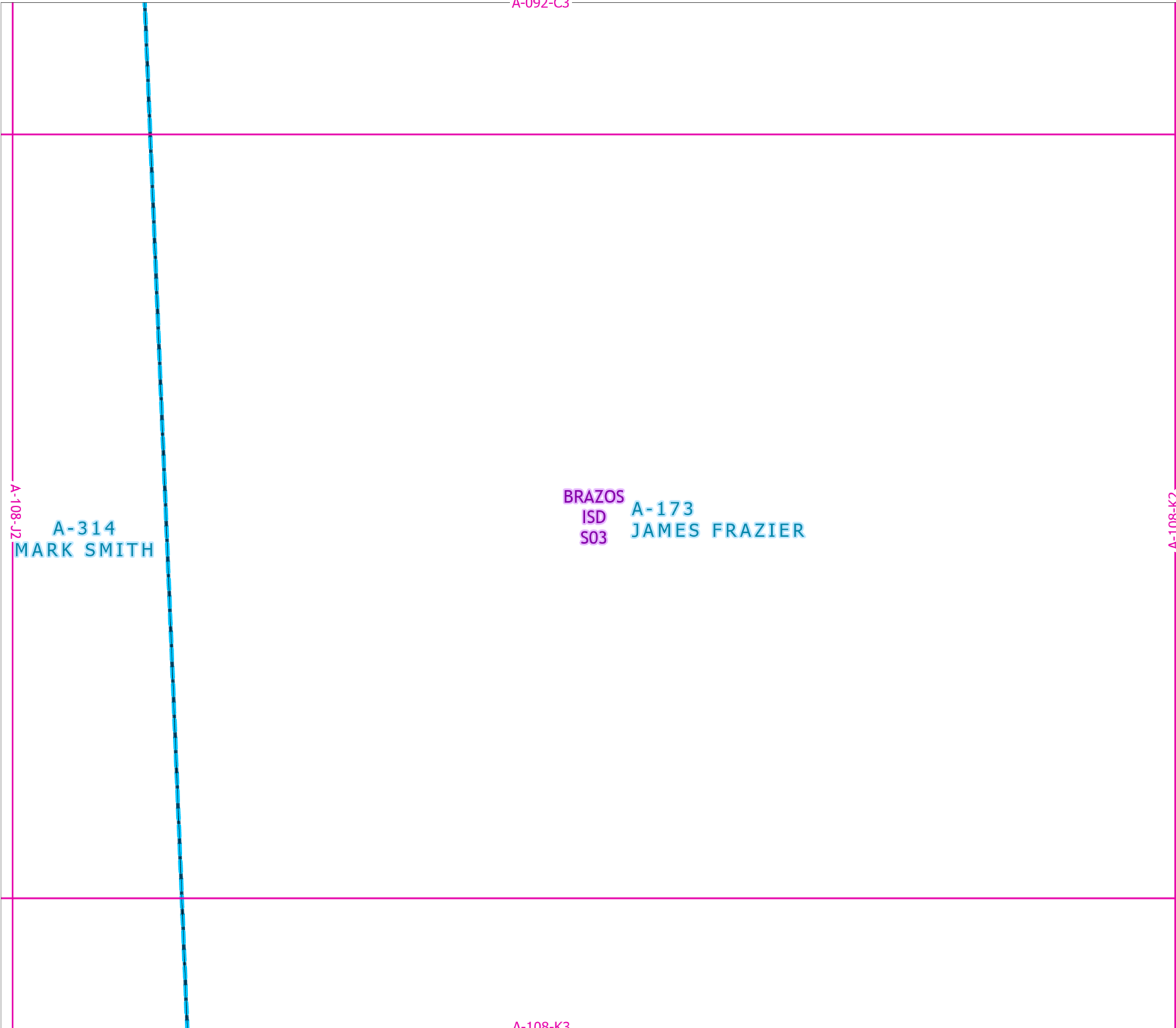
Fort Bend Central Appraisal District (FBCAD) is not authorized to determine legal title to property or establish the legal boundaries of property. FBCAD establishes appraisal records based on information from various sources, including but not limited to deeds, plats and surveys provided to but not created by the district. FBCAD is not responsible for errors or omissions in information submitted to and reviewed by the district. If any errors or omission are detected, contact the GIS Department of the FBCAD.



Grid Location Reference



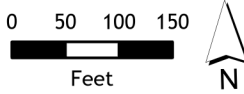
County Location Reference



# 2021 Certified Tax Roll



**Grid Page  
A-108-K2**

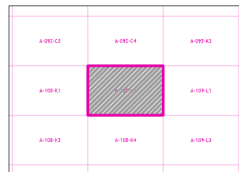


Fort Bend Central Appraisal District (FBCAD) is not authorized to determine legal title to property or establish the legal boundaries of property. FBCAD establishes appraisal records based on information from various sources, including but not limited to deeds, plats and surveys provided to but not created by the district. FBCAD is not responsible for errors or omissions in information submitted to and reviewed by the district. If any errors or omission are detected, contact the GIS Department of the FBCAD.

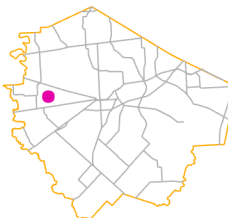
**A-173** BRAZOS  
JAMES FRAZIER ISD  
S03

A-108-K1

A-109-L1



Grid Location Reference



County Location Reference

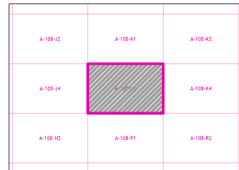
# 2021 Certified Tax Roll



Grid Page  
A-108-K3



Fort Bend Central Appraisal District (FBCAD) is not authorized to determine legal title to property or establish the legal boundaries of property. FBCAD establishes appraisal records based on information from various sources, including but not limited to deeds, plats and surveys provided to but not created by the district. FBCAD is not responsible for errors or omissions in information submitted to and reviewed by the district. If any errors or omission are detected, contact the GIS Department of the FBCAD.



Grid Location Reference



County Location Reference

A-108-K1

A-173  
JAMES FRAZIER  
BRAZOS  
ISD  
S03

A-314  
MARK SMITH

A-108-J4

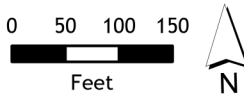
A-108-K4

A-108-P1

# 2021 Certified Tax Roll

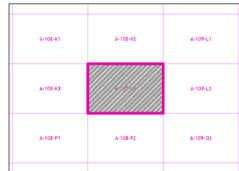


**Grid Page  
A-108-K4**



Fort Bend Central Appraisal District (FBCAD) is not authorized to determine legal title to property or establish the legal boundaries of property. FBCAD establishes appraisal records based on information from various sources, including but not limited to deeds, plats and surveys provided to but not created by the district. FBCAD is not responsible for errors or omissions in information submitted to and reviewed by the district. If any errors or omission are detected, contact the GIS Department of the FBCAD.

**A-173** BRAZOS  
JAMES FRAZIER ISD  
S03



Grid Location Reference



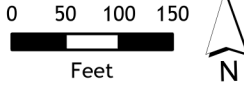
County Location Reference



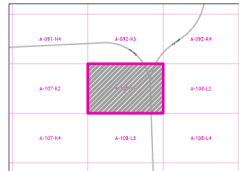
# 2021 Certified Tax Roll



Grid Page  
A-108-L1



Fort Bend Central Appraisal District (FBCAD) is not authorized to determine legal title to property or establish the legal boundaries of property. FBCAD establishes appraisal records based on information from various sources, including but not limited to deeds, plats and surveys provided to but not created by the district. FBCAD is not responsible for errors or omissions in information submitted to and reviewed by the district. If any errors or omission are detected, contact the GIS Department of the FBCAD.



Grid Location Reference



County Location Reference



04-002-2608  
26.251 AC

04-002-2600

A-6  
C BAIRD  
BRAZOS  
ISD  
S03

A-314  
MARK SMITH

A-092-K3

A-107-K2

A-108-L2

A-108-L3

FM 1952 RD

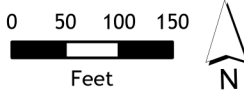
FM 1489 RD

# 2021 Certified Tax Roll

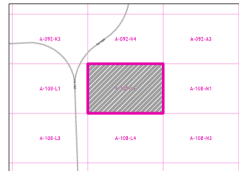


**Grid Page  
A-108-L2**

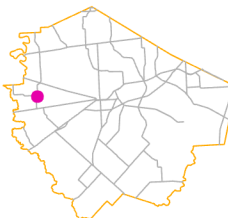
**A-314  
MARK SMITH  
BRAZOS  
ISD  
S03**



Fort Bend Central Appraisal District (FBCAD) is not authorized to determine legal title to property or establish the legal boundaries of property. FBCAD establishes appraisal records based on information from various sources, including but not limited to deeds, plats and surveys provided to but not created by the district. FBCAD is not responsible for errors or omissions in information submitted to and reviewed by the district. If any errors or omission are detected, contact the GIS Department of the FBCAD.



Grid Location Reference



County Location Reference

A-108-L1

A-314  
MARK SMITH

A-6  
C BAIRD  
BRAZOS  
ISD  
S03

FM 1952 RD

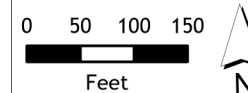
A-107-K4

A-108-L4

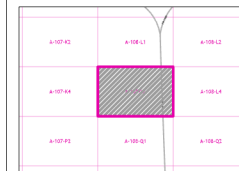
# 2021 Certified Tax Roll



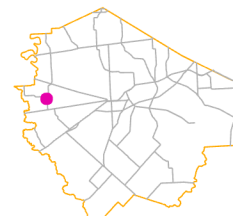
Grid Page  
A-108-L3



Fort Bend Central Appraisal District (FBCAD) is not authorized to determine legal title to property or establish the legal boundaries of property. FBCAD establishes appraisal records based on information from various sources, including but not limited to deeds, plats and surveys provided to but not created by the district. FBCAD is not responsible for errors or omissions in information submitted to and reviewed by the district. If any errors or omission are detected, contact the GIS Department of the FBCAD.



Grid Location Reference



County Location Reference

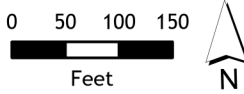
A-108-Q1

# 2021 Certified Tax Roll

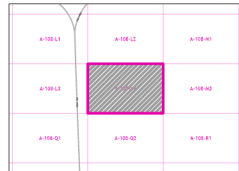


**Grid Page  
A-108-L4**

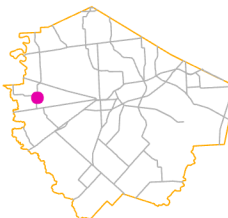
**A-314  
MARK SMITH  
BRAZOS  
ISD  
S03**



Fort Bend Central Appraisal District (FBCAD) is not authorized to determine legal title to property or establish the legal boundaries of property. FBCAD establishes appraisal records based on information from various sources, including but not limited to deeds, plats and surveys provided to but not created by the district. FBCAD is not responsible for errors or omissions in information submitted to and reviewed by the district. If any errors or omission are detected, contact the GIS Department of the FBCAD.



Grid Location Reference



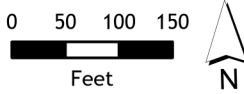
County Location Reference

# 2021 Certified Tax Roll

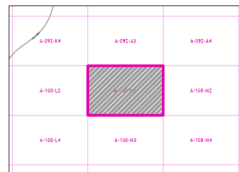


## Grid Page A-108-M1

A-314  
MARK SMITH  
BRAZOS  
ISD  
S03



Fort Bend Central Appraisal District (FBCAD) is not authorized to determine legal title to property or establish the legal boundaries of property. FBCAD establishes appraisal records based on information from various sources, including but not limited to deeds, plats and surveys provided to but not created by the district. FBCAD is not responsible for errors or omissions in information submitted to and reviewed by the district. If any errors or omission are detected, contact the GIS Department of the FBCAD.



Grid Location Reference



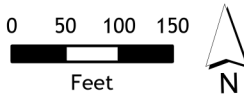
County Location Reference

# 2021 Certified Tax Roll



**Grid Page  
A-108-M2**

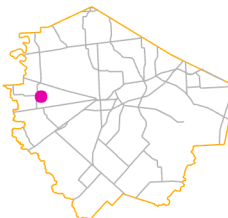
**A-314  
MARK SMITH  
BRAZOS  
ISD  
S03**



Fort Bend Central Appraisal District (FBCAD) is not authorized to determine legal title to property or establish the legal boundaries of property. FBCAD establishes appraisal records based on information from various sources, including but not limited to deeds, plats and surveys provided to but not created by the district. FBCAD is not responsible for errors or omissions in information submitted to and reviewed by the district. If any errors or omission are detected, contact the GIS Department of the FBCAD.

A-092-A2	A-092-A4	A-092-A6
A-108-M1	A-108-M2	A-108-M3
A-108-M4	A-108-M6	A-108-M8

Grid Location Reference



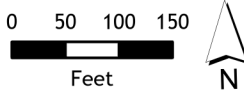
County Location Reference

# 2021 Certified Tax Roll

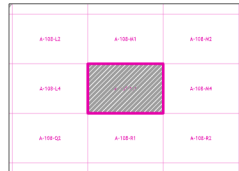


**Grid Page  
A-108-M3**

**A-314  
MARK SMITH  
BRAZOS  
ISD  
S03**



Fort Bend Central Appraisal District (FBCAD) is not authorized to determine legal title to property or establish the legal boundaries of property. FBCAD establishes appraisal records based on information from various sources, including but not limited to deeds, plats and surveys provided to but not created by the district. FBCAD is not responsible for errors or omissions in information submitted to and reviewed by the district. If any errors or omission are detected, contact the GIS Department of the FBCAD.



Grid Location Reference



County Location Reference

# 2021 Certified Tax Roll

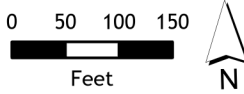


**Grid Page  
A-108-M4**

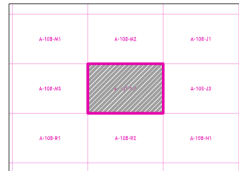
**A-314  
MARK SMITH**

**BRAZOS  
ISD  
S03**

**13-005-5201**  
1334 AC



Fort Bend Central Appraisal District (FBCAD) is not authorized to determine legal title to property or establish the legal boundaries of property. FBCAD establishes appraisal records based on information from various sources, including but not limited to deeds, plats and surveys provided to but not created by the district. FBCAD is not responsible for errors or omissions in information submitted to and reviewed by the district. If any errors or omission are detected, contact the GIS Department of the FBCAD.



Grid Location Reference



County Location Reference

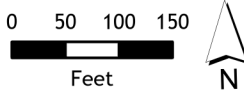


# 2021 Certified Tax Roll

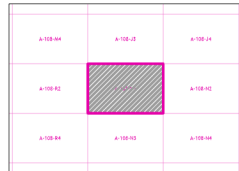


**Grid Page  
A-108-N1**

**A-314  
MARK SMITH  
BRAZOS  
ISD  
S03**



Fort Bend Central Appraisal District (FBCAD) is not authorized to determine legal title to property or establish the legal boundaries of property. FBCAD establishes appraisal records based on information from various sources, including but not limited to deeds, plats and surveys provided to but not created by the district. FBCAD is not responsible for errors or omissions in information submitted to and reviewed by the district. If any errors or omission are detected, contact the GIS Department of the FBCAD.



Grid Location Reference



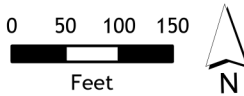
County Location Reference

# 2021 Certified Tax Roll

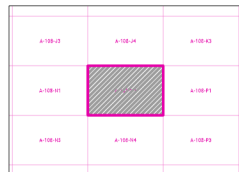


**Grid Page  
A-108-N2**

**A-314  
MARK SMITH  
BRAZOS  
ISD  
S03**



Fort Bend Central Appraisal District (FBCAD) is not authorized to determine legal title to property or establish the legal boundaries of property. FBCAD establishes appraisal records based on information from various sources, including but not limited to deeds, plats and surveys provided to but not created by the district. FBCAD is not responsible for errors or omissions in information submitted to and reviewed by the district. If any errors or omission are detected, contact the GIS Department of the FBCAD.



Grid Location Reference



County Location Reference

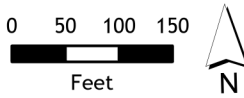
A-108-N1

# 2021 Certified Tax Roll

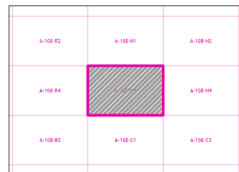


Grid Page  
A-108-N3

A-314  
MARK SMITH  
BRAZOS  
ISD  
S03



Fort Bend Central Appraisal District (FBCAD) is not authorized to determine legal title to property or establish the legal boundaries of property. FBCAD establishes appraisal records based on information from various sources, including but not limited to deeds, plats and surveys provided to but not created by the district. FBCAD is not responsible for errors or omissions in information submitted to and reviewed by the district. If any errors or omission are detected, contact the GIS Department of the FBCAD.



Grid Location Reference



County Location Reference

A-108-R4

A-108-N4

A-119  
BBB & C RR

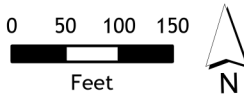
A-108-C1



A-314  
MARK SMITH

BRAZOS  
ISD  
S03

A-119  
BBB & C RR



Fort Bend Central Appraisal District (FBCAD) is not authorized to determine legal title to property or establish the legal boundaries of property. FBCAD establishes appraisal records based on information from various sources, including but not limited to deeds, plats and surveys provided to but not created by the district. FBCAD is not responsible for errors or omissions in information submitted to and reviewed by the district. If any errors or omission are detected, contact the GIS Department of the FBCAD.

A-108-N1	A-108-N2	A-108-N3
A-108-N3	A-108-N4	A-108-N5
A-108-C1	A-108-C2	A-108-C3

Grid Location Reference



County Location Reference

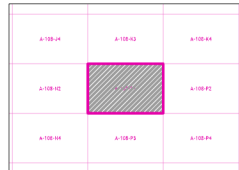
# 2021 Certified Tax Roll



Grid Page  
A-108-P1



Fort Bend Central Appraisal District (FBCAD) is not authorized to determine legal title to property or establish the legal boundaries of property. FBCAD establishes appraisal records based on information from various sources, including but not limited to deeds, plats and surveys provided to but not created by the district. FBCAD is not responsible for errors or omissions in information submitted to and reviewed by the district. If any errors or omission are detected, contact the GIS Department of the FBCAD.



Grid Location Reference



County Location Reference

A-108-K3

A-314  
MARK SMITH

BRAZOS A-173  
ISD JAMES FRAZIER  
S03

A-108-P3

A-108-N2

A-108-P2

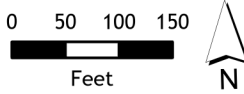
# 2021 Certified Tax Roll



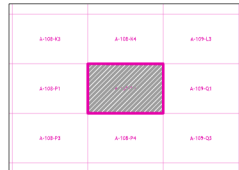
**Grid Page  
A-108-P2**

**A-173  
JAMES FRAZIER**

**BRAZOS  
ISD  
S03**



Fort Bend Central Appraisal District (FBCAD) is not authorized to determine legal title to property or establish the legal boundaries of property. FBCAD establishes appraisal records based on information from various sources, including but not limited to deeds, plats and surveys provided to but not created by the district. FBCAD is not responsible for errors or omissions in information submitted to and reviewed by the district. If any errors or omission are detected, contact the GIS Department of the FBCAD.



Grid Location Reference



County Location Reference

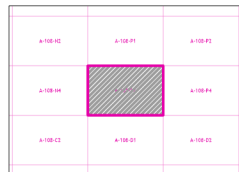
# 2021 Certified Tax Roll



Grid Page  
A-108-P3



Fort Bend Central Appraisal District (FBCAD) is not authorized to determine legal title to property or establish the legal boundaries of property. FBCAD establishes appraisal records based on information from various sources, including but not limited to deeds, plats and surveys provided to but not created by the district. FBCAD is not responsible for errors or omissions in information submitted to and reviewed by the district. If any errors or omission are detected, contact the GIS Department of the FBCAD.



Grid Location Reference



County Location Reference

A-108-P1

A-108-N4

A-314  
MARK SMITH

BRAZOS  
ISD  
S03

A-173  
JAMES FRAZIER

A-108-P4

A-108-D1

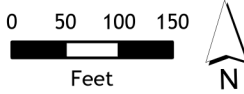
# 2021 Certified Tax Roll



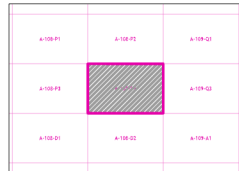
**Grid Page  
A-108-P4**

**A-173  
JAMES FRAZIER**

**BRAZOS  
ISD  
S03**



Fort Bend Central Appraisal District (FBCAD) is not authorized to determine legal title to property or establish the legal boundaries of property. FBCAD establishes appraisal records based on information from various sources, including but not limited to deeds, plats and surveys provided to but not created by the district. FBCAD is not responsible for errors or omissions in information submitted to and reviewed by the district. If any errors or omission are detected, contact the GIS Department of the FBCAD.



Grid Location Reference



County Location Reference



A-108-L3

FM 1952 RD

# 2021 Certified Tax Roll



## Grid Page A-108-Q1

A-107-P2

A-108-Q2

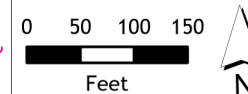
A-6  
C BAIRD

BRAZOS  
ISD  
S03

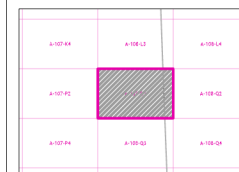
A-314  
MARK SMITH

11-003-4000  
71.685 AC

11-003-4001



Fort Bend Central Appraisal District (FBCAD) is not authorized to determine legal title to property or establish the legal boundaries of property. FBCAD establishes appraisal records based on information from various sources, including but not limited to deeds, plats and surveys provided to but not created by the district. FBCAD is not responsible for errors or omissions in information submitted to and reviewed by the district. If any errors or omission are detected, contact the GIS Department of the FBCAD.



Grid Location Reference



County Location Reference

A-108-Q3

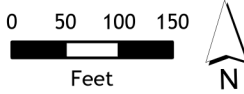
# 2021 Certified Tax Roll



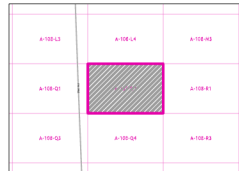
**Grid Page  
A-108-Q2**

**A-314  
MARK SMITH**

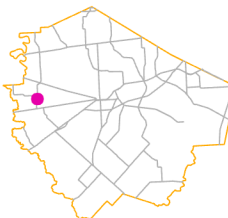
**BRAZOS  
ISD  
S03**



Fort Bend Central Appraisal District (FBCAD) is not authorized to determine legal title to property or establish the legal boundaries of property. FBCAD establishes appraisal records based on information from various sources, including but not limited to deeds, plats and surveys provided to but not created by the district. FBCAD is not responsible for errors or omissions in information submitted to and reviewed by the district. If any errors or omission are detected, contact the GIS Department of the FBCAD.



Grid Location Reference



County Location Reference

A-108-Q1

# 2021 Certified Tax Roll

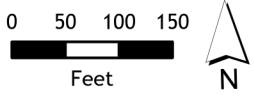


Grid Page  
A-108-Q3

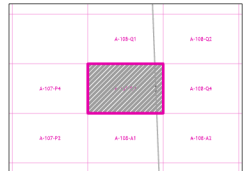
A-6  
C BAIRD  
BRAZOS  
ISD  
S03

13-001-5201

13-001-5210  
37.2786 AC



Fort Bend Central Appraisal District (FBCAD) is not authorized to determine legal title to property or establish the legal boundaries of property. FBCAD establishes appraisal records based on information from various sources, including but not limited to deeds, plats and surveys provided to but not created by the district. FBCAD is not responsible for errors or omissions in information submitted to and reviewed by the district. If any errors or omission are detected, contact the GIS Department of the FBCAD.



Grid Location Reference



County Location Reference

A-107-P4

A-108-Q4

FM 1957 RD

A-108-A1

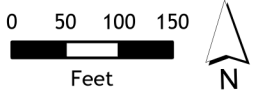
# 2021 Certified Tax Roll



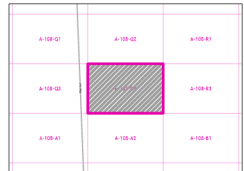
**Grid Page  
A-108-Q4**

**A-314  
MARK SMITH**

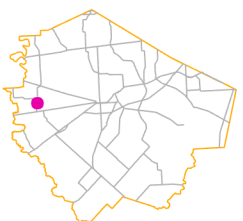
**BRAZOS  
ISD  
S03**



Fort Bend Central Appraisal District (FBCAD) is not authorized to determine legal title to property or establish the legal boundaries of property. FBCAD establishes appraisal records based on information from various sources, including but not limited to deeds, plats and surveys provided to but not created by the district. FBCAD is not responsible for errors or omissions in information submitted to and reviewed by the district. If any errors or omission are detected, contact the GIS Department of the FBCAD.



Grid Location Reference



County Location Reference

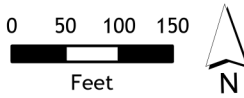
# 2021 Certified Tax Roll



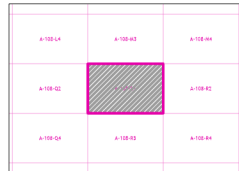
**Grid Page  
A-108-R1**

**A-314  
MARK SMITH**

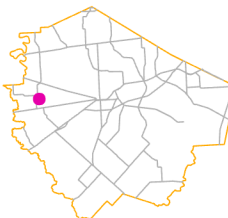
**BRAZOS  
ISD  
S03**



Fort Bend Central Appraisal District (FBCAD) is not authorized to determine legal title to property or establish the legal boundaries of property. FBCAD establishes appraisal records based on information from various sources, including but not limited to deeds, plats and surveys provided to but not created by the district. FBCAD is not responsible for errors or omissions in information submitted to and reviewed by the district. If any errors or omission are detected, contact the GIS Department of the FBCAD.



Grid Location Reference



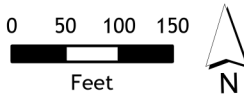
County Location Reference

# 2021 Certified Tax Roll

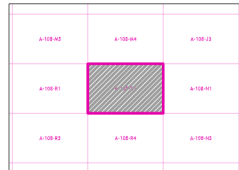


**Grid Page  
A-108-R2**

**A-314  
MARK SMITH  
BRAZOS  
ISD  
S03**



Fort Bend Central Appraisal District (FBCAD) is not authorized to determine legal title to property or establish the legal boundaries of property. FBCAD establishes appraisal records based on information from various sources, including but not limited to deeds, plats and surveys provided to but not created by the district. FBCAD is not responsible for errors or omissions in information submitted to and reviewed by the district. If any errors or omission are detected, contact the GIS Department of the FBCAD.



Grid Location Reference



County Location Reference

# 2021 Certified Tax Roll



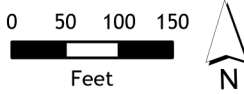
**Grid Page  
A-108-R3**

**A-314  
MARK SMITH**

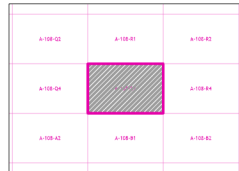
**BRAZOS  
ISD  
S03**

A-108-Q4

A-108-R4



Fort Bend Central Appraisal District (FBCAD) is not authorized to determine legal title to property or establish the legal boundaries of property. FBCAD establishes appraisal records based on information from various sources, including but not limited to deeds, plats and surveys provided to but not created by the district. FBCAD is not responsible for errors or omissions in information submitted to and reviewed by the district. If any errors or omission are detected, contact the GIS Department of the FBCAD.



Grid Location Reference



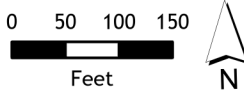
County Location Reference

# 2021 Certified Tax Roll

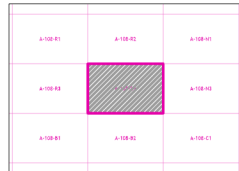


**Grid Page  
A-108-R4**

**A-314  
MARK SMITH  
BRAZOS  
ISD  
S03**



Fort Bend Central Appraisal District (FBCAD) is not authorized to determine legal title to property or establish the legal boundaries of property. FBCAD establishes appraisal records based on information from various sources, including but not limited to deeds, plats and surveys provided to but not created by the district. FBCAD is not responsible for errors or omissions in information submitted to and reviewed by the district. If any errors or omission are detected, contact the GIS Department of the FBCAD.



Grid Location Reference



County Location Reference