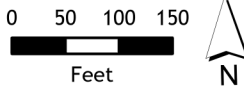


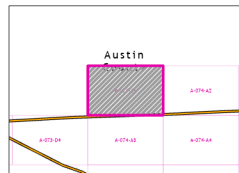
# 2021 Certified Tax Roll



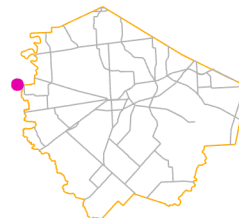
**Grid Page  
A-074-A1**



Fort Bend Central Appraisal District (FBCAD) is not authorized to determine legal title to property or establish the legal boundaries of property. FBCAD establishes appraisal records based on information from various sources, including but not limited to deeds, plats and surveys provided to but not created by the district. FBCAD is not responsible for errors or omissions in information submitted to and reviewed by the district. If any errors or omission are detected, contact the GIS Department of the FBCAD.



Grid Location Reference



County Location Reference

**BRAZOS**  
**ISD**  
**S03**

**A-66**  
**J S O'CONNOR**

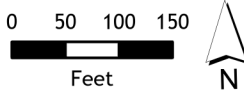
A-074-A3

A-074-A2

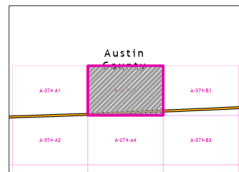
# 2021 Certified Tax Roll



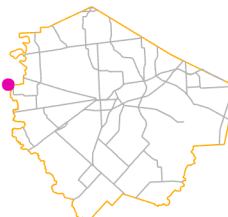
Grid Page  
A-074-A2



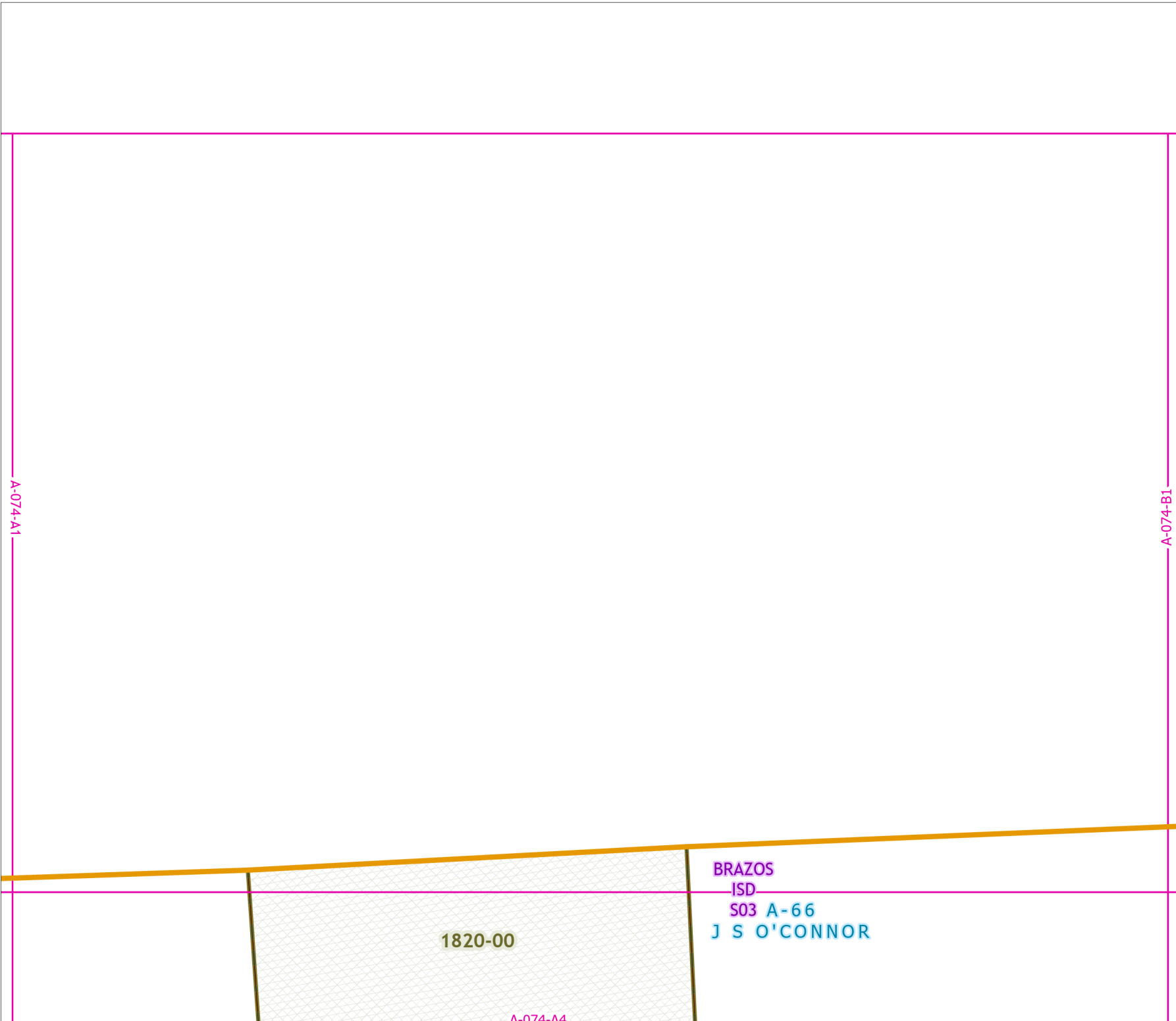
Fort Bend Central Appraisal District (FBCAD) is not authorized to determine legal title to property or establish the legal boundaries of property. FBCAD establishes appraisal records based on information from various sources, including but not limited to deeds, plats and surveys provided to but not created by the district. FBCAD is not responsible for errors or omissions in information submitted to and reviewed by the district. If any errors or omission are detected, contact the GIS Department of the FBCAD.



Grid Location Reference



County Location Reference

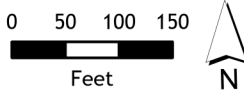


A-074-A1

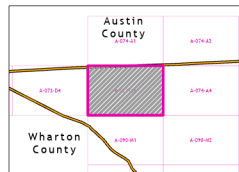
# 2021 Certified Tax Roll



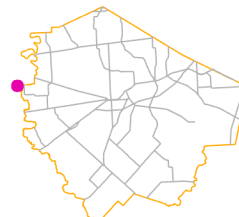
**Grid Page  
A-074-A3**



Fort Bend Central Appraisal District (FBCAD) is not authorized to determine legal title to property or establish the legal boundaries of property. FBCAD establishes appraisal records based on information from various sources, including but not limited to deeds, plats and surveys provided to but not created by the district. FBCAD is not responsible for errors or omissions in information submitted to and reviewed by the district. If any errors or omission are detected, contact the GIS Department of the FBCAD.



Grid Location Reference



County Location Reference



**BRAZOS  
ISD  
S03**

**A-66  
13-002-1600 J S O'CONNOR  
65 AC**

**19-002-2200  
6.92 AC**

**5210**

**5211**

A-090-M1



A-074-A3

A-074-B3

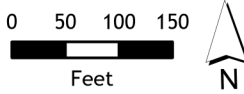
2  
7.56 AC

1820-00

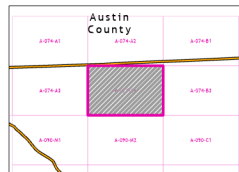
3  
7.56 AC

A-66  
J S O'CONNOR

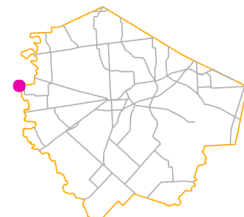
BRAZOS  
ISD  
S03



Fort Bend Central Appraisal District (FBCAD) is not authorized to determine legal title to property or establish the legal boundaries of property. FBCAD establishes appraisal records based on information from various sources, including but not limited to deeds, plats and surveys provided to but not created by the district. FBCAD is not responsible for errors or omissions in information submitted to and reviewed by the district. If any errors or omission are detected, contact the GIS Department of the FBCAD.



Grid Location Reference

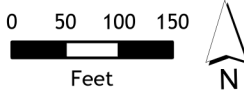


County Location Reference

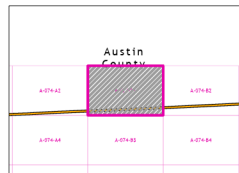
# 2021 Certified Tax Roll



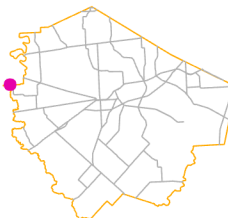
Grid Page  
A-074-B1



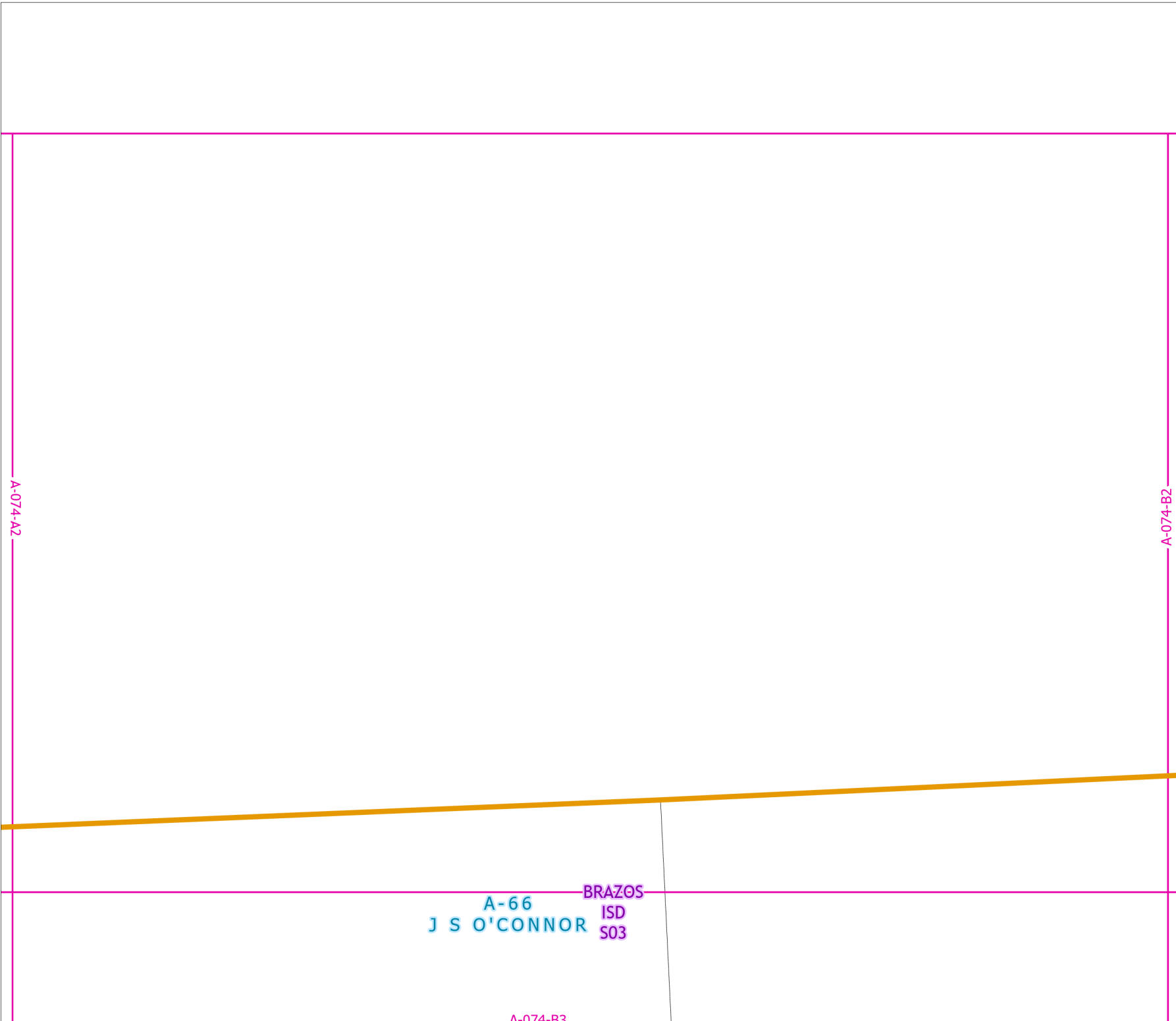
Fort Bend Central Appraisal District (FBCAD) is not authorized to determine legal title to property or establish the legal boundaries of property. FBCAD establishes appraisal records based on information from various sources, including but not limited to deeds, plats and surveys provided to but not created by the district. FBCAD is not responsible for errors or omissions in information submitted to and reviewed by the district. If any errors or omission are detected, contact the GIS Department of the FBCAD.



Grid Location Reference



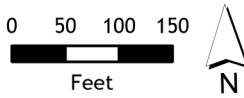
County Location Reference



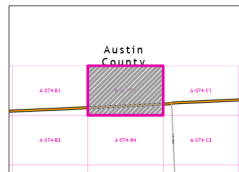
# 2021 Certified Tax Roll



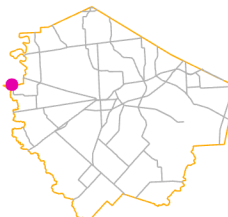
Grid Page  
A-074-B2



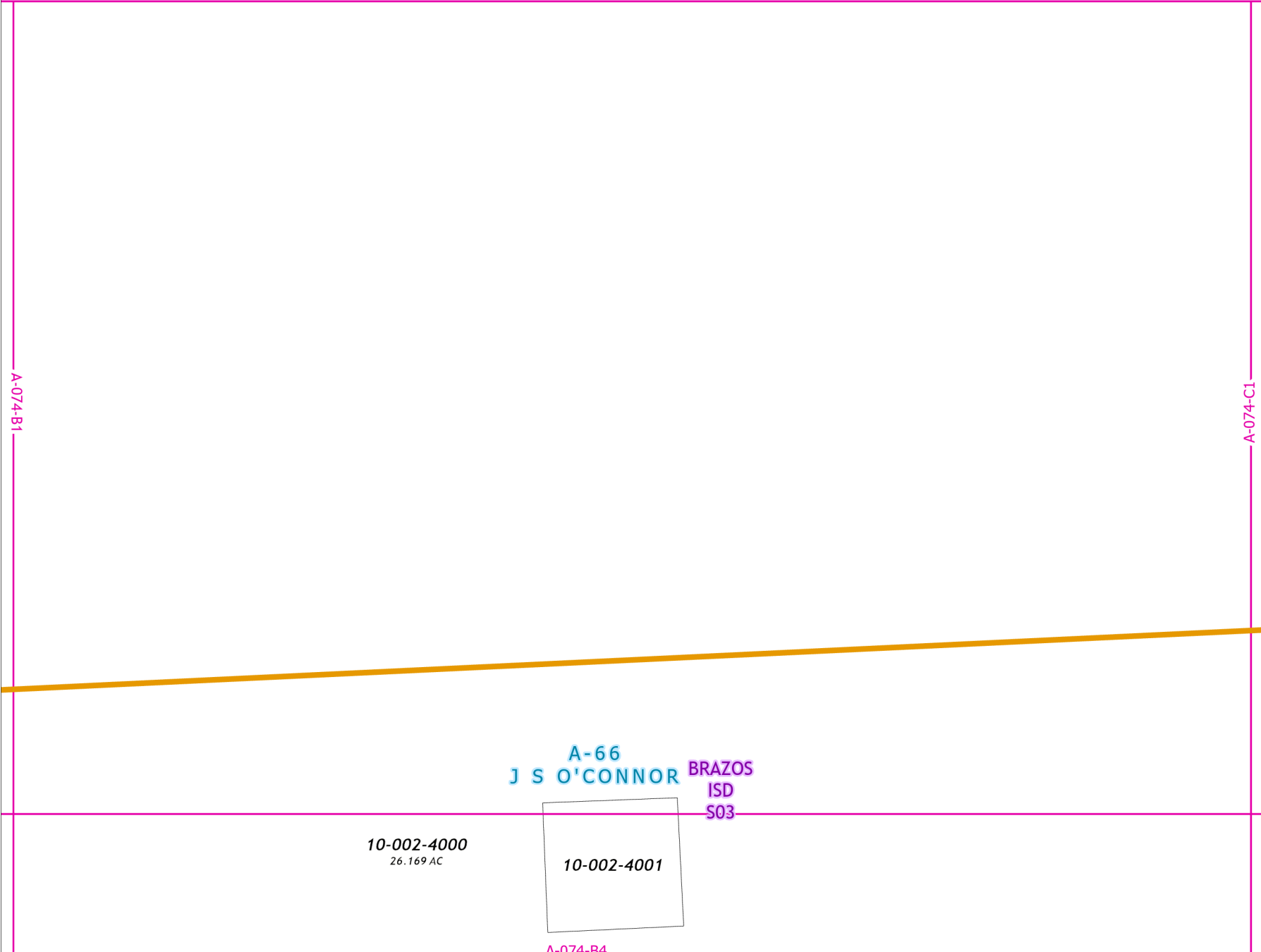
Fort Bend Central Appraisal District (FBCAD) is not authorized to determine legal title to property or establish the legal boundaries of property. FBCAD establishes appraisal records based on information from various sources, including but not limited to deeds, plats and surveys provided to but not created by the district. FBCAD is not responsible for errors or omissions in information submitted to and reviewed by the district. If any errors or omission are detected, contact the GIS Department of the FBCAD.



Grid Location Reference



County Location Reference



A-66  
J S O'CONNOR BRAZOS  
ISD  
S03

10-002-4000  
26.169 AC

10-002-4001

A-074-B1

A-074-C1

A-074-B4

A-074-B1

# 2021 Certified Tax Roll



**Grid Page  
A-074-B3**

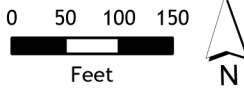
**02-002-8000**  
27.0144 AC

**A-66  
J S O'CONNOR**

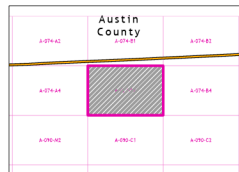
**BRAZOS  
ISD  
S03**

A-074-A4

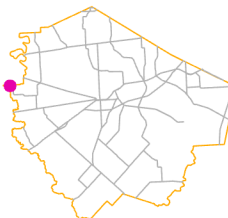
A-074-B4



Fort Bend Central Appraisal District (FBCAD) is not authorized to determine legal title to property or establish the legal boundaries of property. FBCAD establishes appraisal records based on information from various sources, including but not limited to deeds, plats and surveys provided to but not created by the district. FBCAD is not responsible for errors or omissions in information submitted to and reviewed by the district. If any errors or omission are detected, contact the GIS Department of the FBCAD.



Grid Location Reference



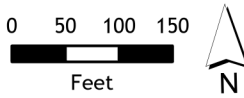
County Location Reference

A-090-C1

# 2021 Certified Tax Roll



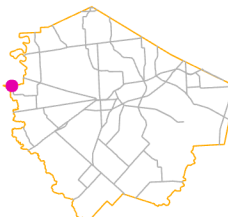
Grid Page  
A-074-B4



Fort Bend Central Appraisal District (FBCAD) is not authorized to determine legal title to property or establish the legal boundaries of property. FBCAD establishes appraisal records based on information from various sources, including but not limited to deeds, plats and surveys provided to but not created by the district. FBCAD is not responsible for errors or omissions in information submitted to and reviewed by the district. If any errors or omission are detected, contact the GIS Department of the FBCAD.

Austin County		
10101		
A-074-B1	A-074-B2	A-074-C1
A-074-B3	<b>A-074-B4</b>	A-074-E2
A-070-C1	A-070-C2	A-070-E1

Grid Location Reference



County Location Reference

A-074-B2

10-002-4000  
26.169 AC

10-002-4001

A-66  
J S O'CONNOR

13-004-4000  
29.16 AC

BRAZOS  
ISD  
S03

08-002-1001

A-090-C2

A-074-B3

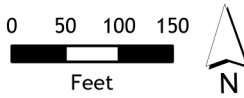
A-074-C3



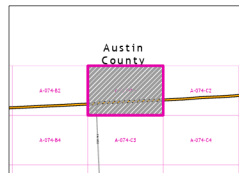
# 2021 Certified Tax Roll



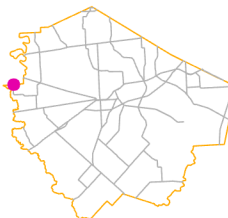
Grid Page  
A-074-C1



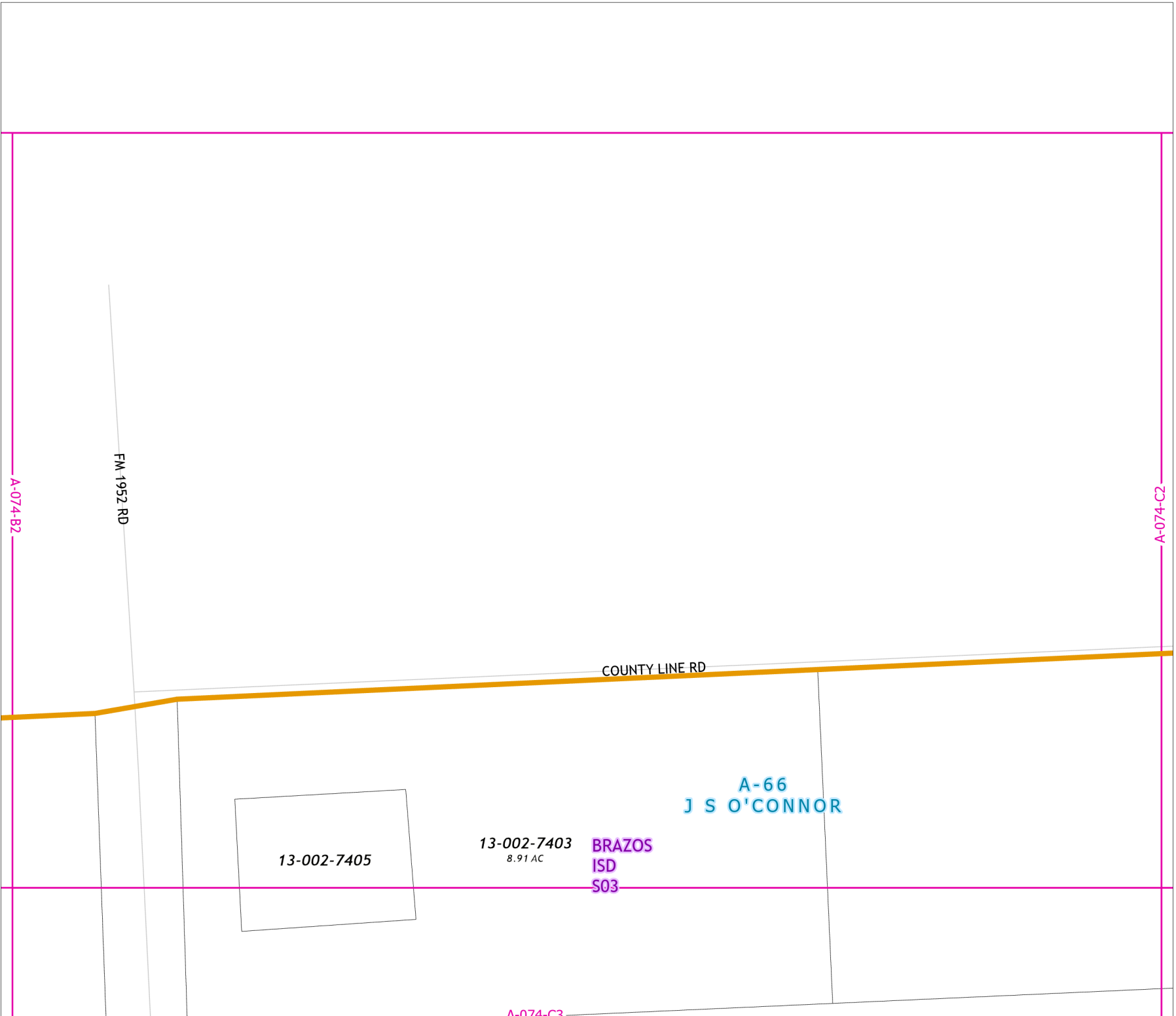
Fort Bend Central Appraisal District (FBCAD) is not authorized to determine legal title to property or establish the legal boundaries of property. FBCAD establishes appraisal records based on information from various sources, including but not limited to deeds, plats and surveys provided to but not created by the district. FBCAD is not responsible for errors or omissions in information submitted to and reviewed by the district. If any errors or omission are detected, contact the GIS Department of the FBCAD.



Grid Location Reference



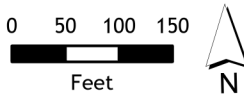
County Location Reference



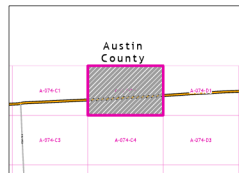
# 2021 Certified Tax Roll



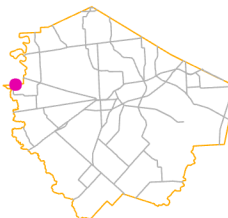
Grid Page  
A-074-C2



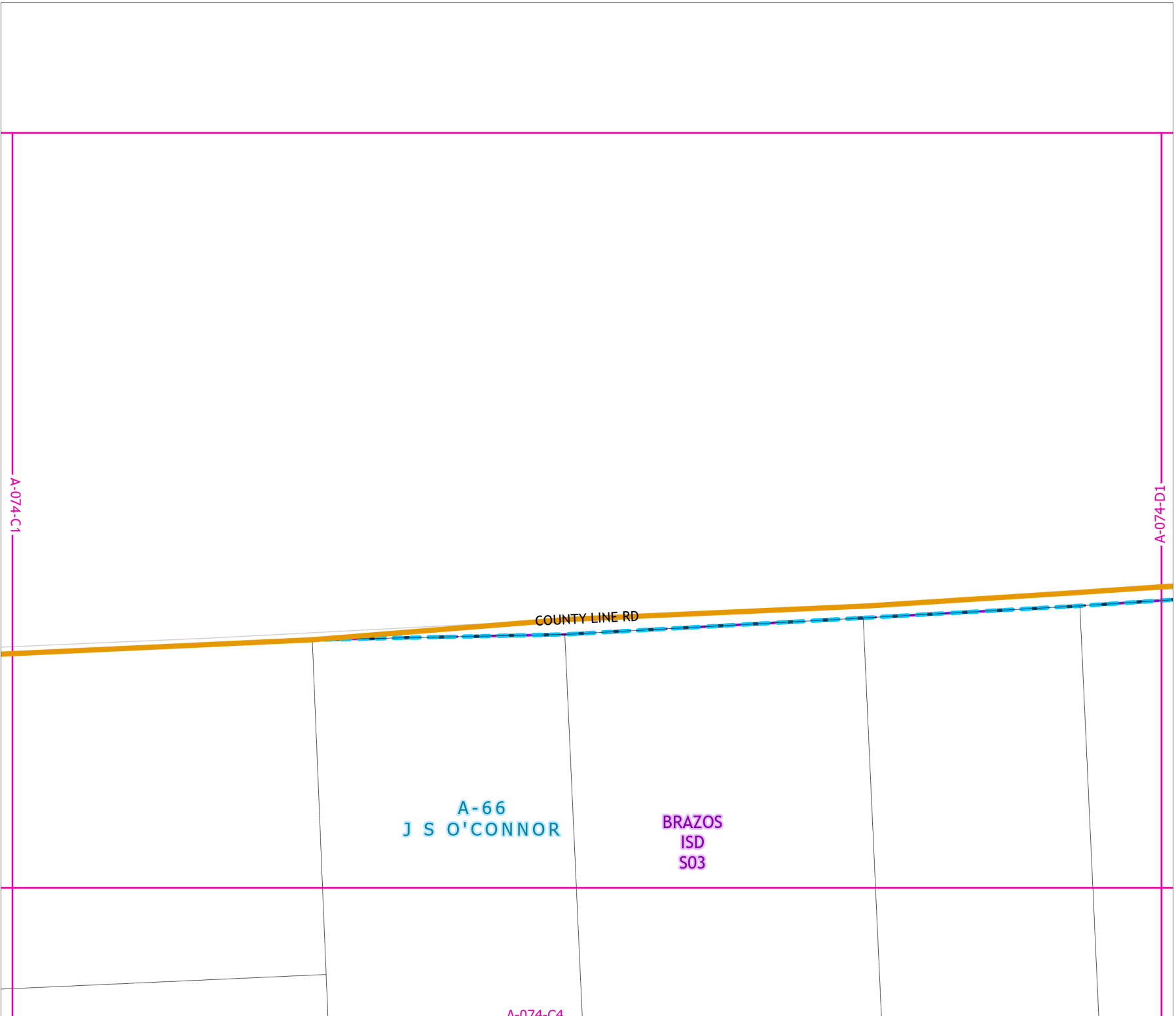
Fort Bend Central Appraisal District (FBCAD) is not authorized to determine legal title to property or establish the legal boundaries of property. FBCAD establishes appraisal records based on information from various sources, including but not limited to deeds, plats and surveys provided to but not created by the district. FBCAD is not responsible for errors or omissions in information submitted to and reviewed by the district. If any errors or omission are detected, contact the GIS Department of the FBCAD.



Grid Location Reference



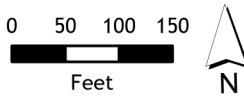
County Location Reference



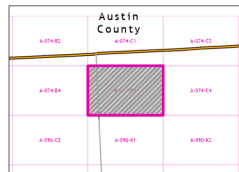
# 2021 Certified Tax Roll



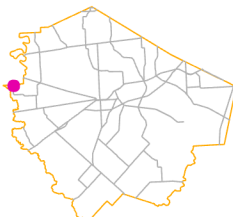
Grid Page  
A-074-C3



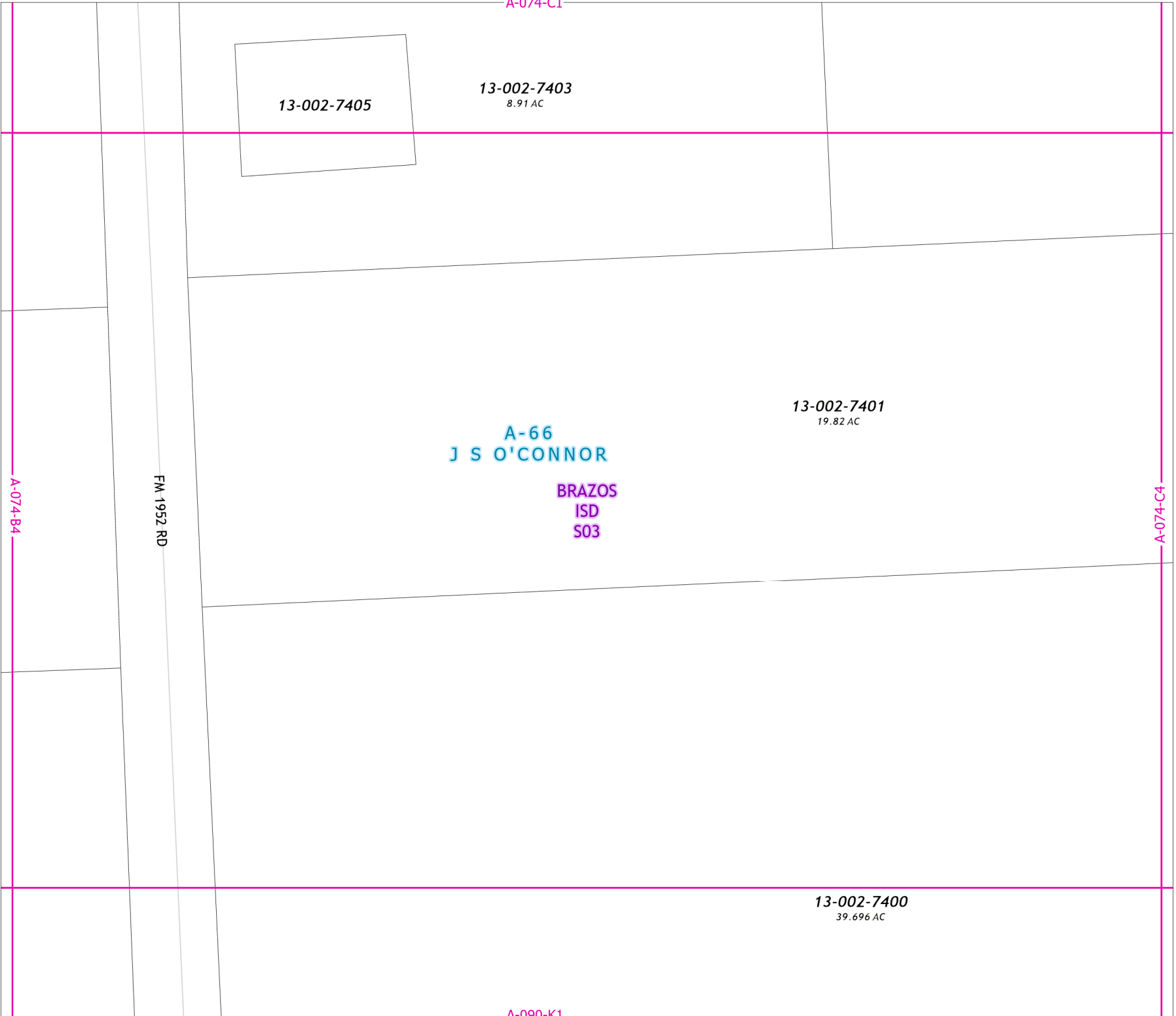
Fort Bend Central Appraisal District (FBCAD) is not authorized to determine legal title to property or establish the legal boundaries of property. FBCAD establishes appraisal records based on information from various sources, including but not limited to deeds, plats and surveys provided to but not created by the district. FBCAD is not responsible for errors or omissions in information submitted to and reviewed by the district. If any errors or omission are detected, contact the GIS Department of the FBCAD.



Grid Location Reference



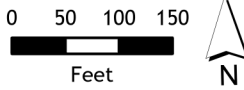
County Location Reference



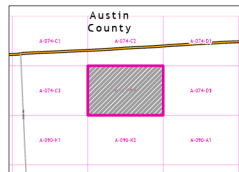
# 2021 Certified Tax Roll



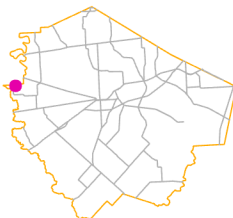
**Grid Page  
A-074-C4**



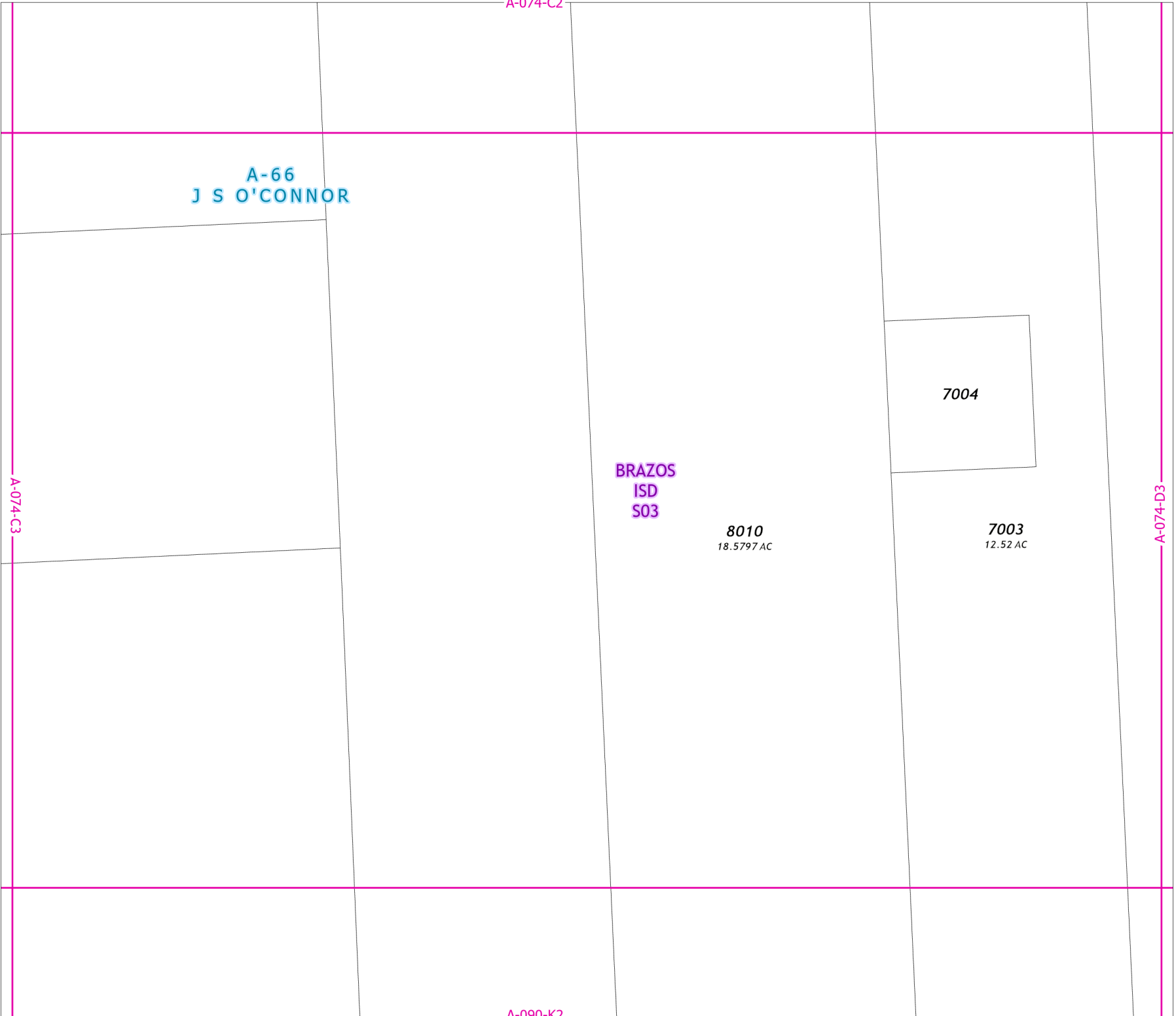
Fort Bend Central Appraisal District (FBCAD) is not authorized to determine legal title to property or establish the legal boundaries of property. FBCAD establishes appraisal records based on information from various sources, including but not limited to deeds, plats and surveys provided to but not created by the district. FBCAD is not responsible for errors or omissions in information submitted to and reviewed by the district. If any errors or omission are detected, contact the GIS Department of the FBCAD.



Grid Location Reference



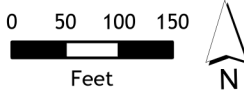
County Location Reference



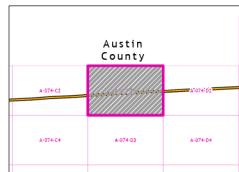
# 2021 Certified Tax Roll



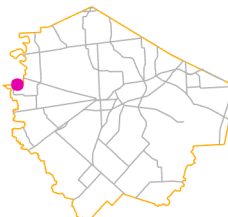
Grid Page  
A-074-D1



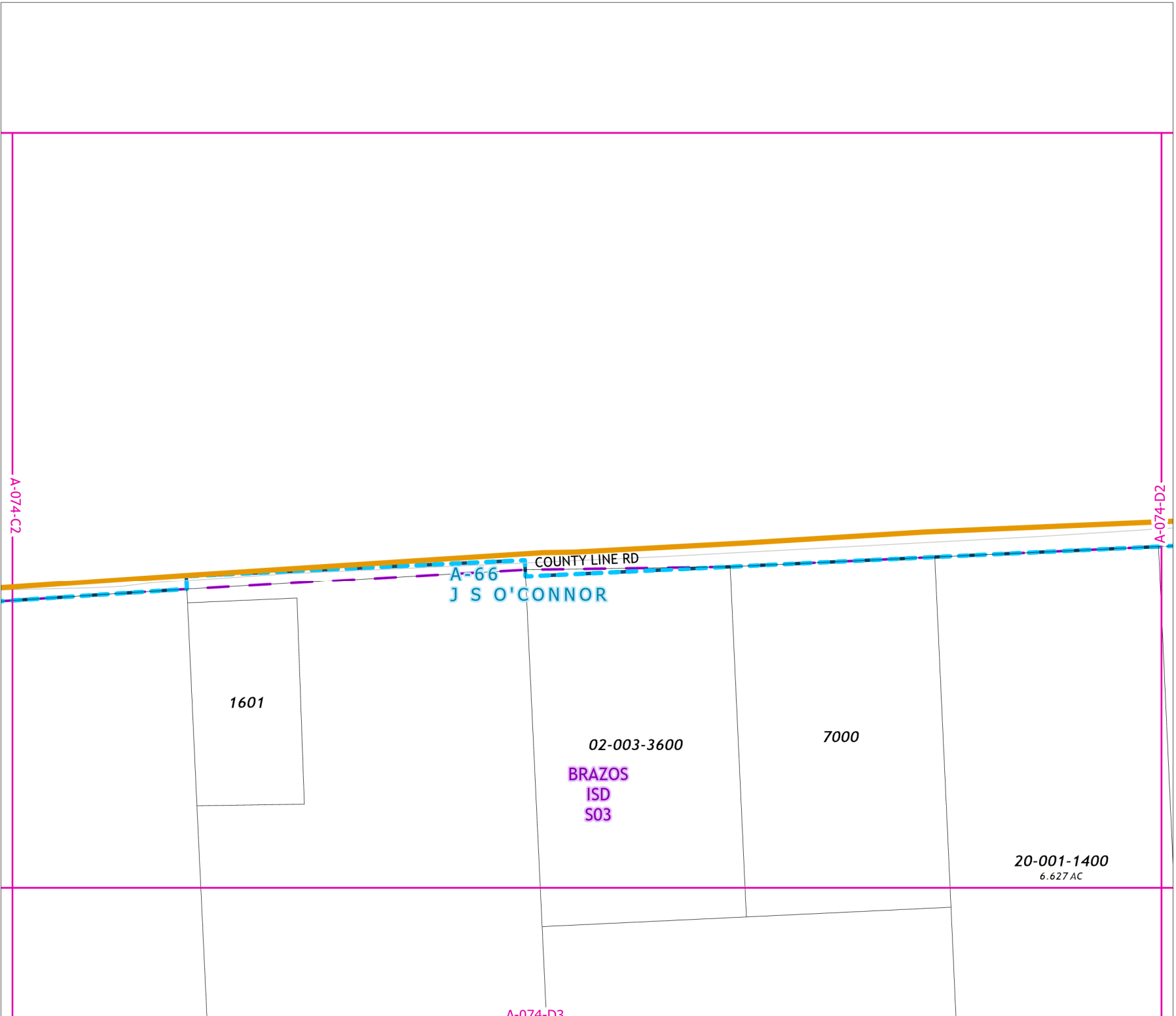
Fort Bend Central Appraisal District (FBCAD) is not authorized to determine legal title to property or establish the legal boundaries of property. FBCAD establishes appraisal records based on information from various sources, including but not limited to deeds, plats and surveys provided to but not created by the district. FBCAD is not responsible for errors or omissions in information submitted to and reviewed by the district. If any errors or omission are detected, contact the GIS Department of the FBCAD.



Grid Location Reference



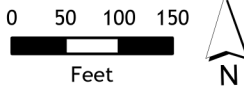
County Location Reference



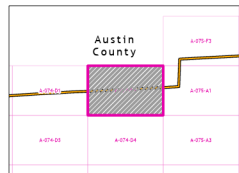
# 2021 Certified Tax Roll



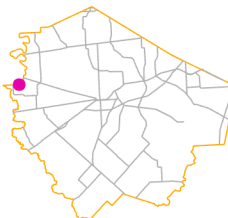
Grid Page  
A-074-D2



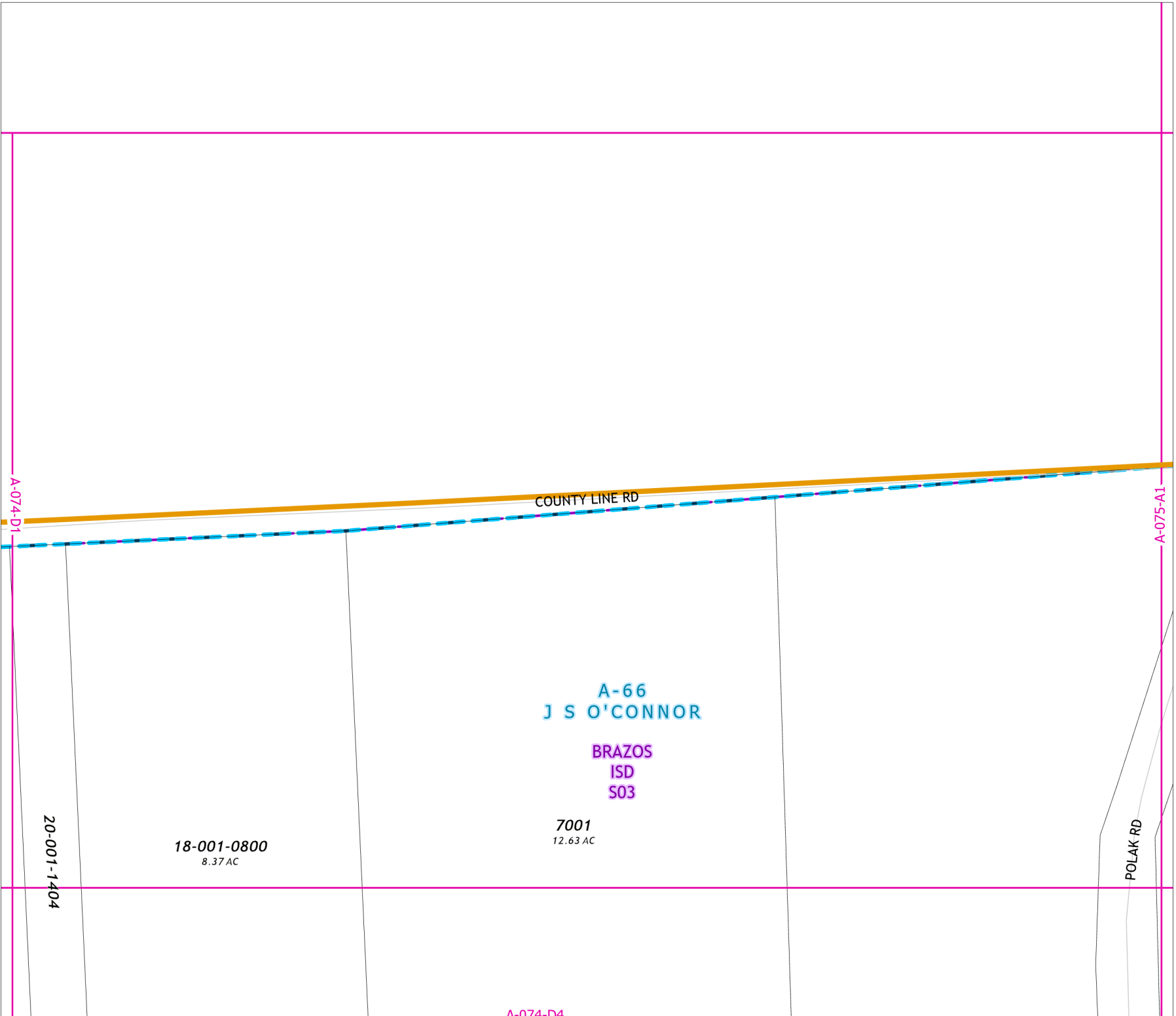
Fort Bend Central Appraisal District (FBCAD) is not authorized to determine legal title to property or establish the legal boundaries of property. FBCAD establishes appraisal records based on information from various sources, including but not limited to deeds, plats and surveys provided to but not created by the district. FBCAD is not responsible for errors or omissions in information submitted to and reviewed by the district. If any errors or omission are detected, contact the GIS Department of the FBCAD.



Grid Location Reference



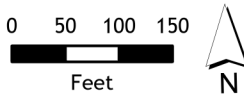
County Location Reference



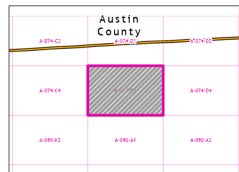
# 2021 Certified Tax Roll



**Grid Page  
A-074-D3**



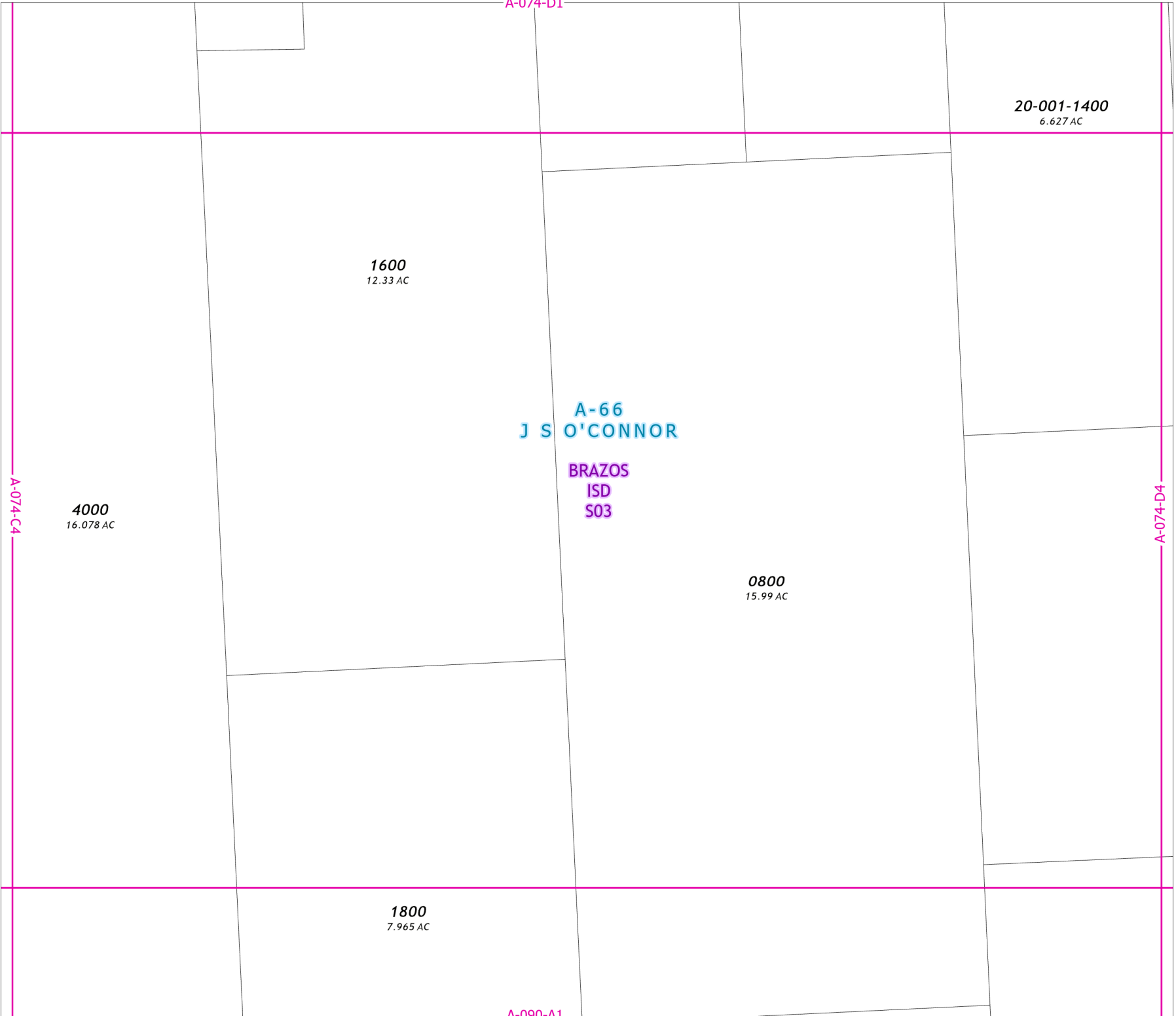
Fort Bend Central Appraisal District (FBCAD) is not authorized to determine legal title to property or establish the legal boundaries of property. FBCAD establishes appraisal records based on information from various sources, including but not limited to deeds, plats and surveys provided to but not created by the district. FBCAD is not responsible for errors or omissions in information submitted to and reviewed by the district. If any errors or omissions are detected, contact the GIS Department of the FBCAD.



Grid Location Reference



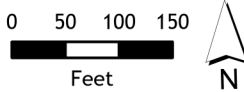
County Location Reference



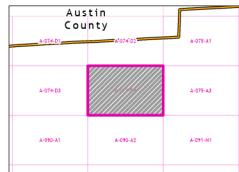
# 2021 Certified Tax Roll



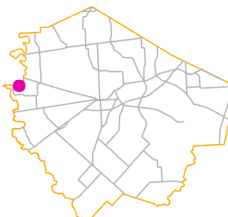
**Grid Page  
A-074-D4**



Fort Bend Central Appraisal District (FBCAD) is not authorized to determine legal title to property or establish the legal boundaries of property. FBCAD establishes appraisal records based on information from various sources, including but not limited to deeds, plats and surveys provided to but not created by the district. FBCAD is not responsible for errors or omissions in information submitted to and reviewed by the district. If any errors or omission are detected, contact the GIS Department of the FBCAD.



Grid Location Reference



County Location Reference

