

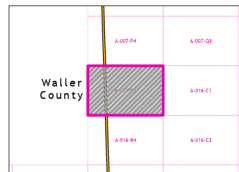
2021 Certified Tax Roll



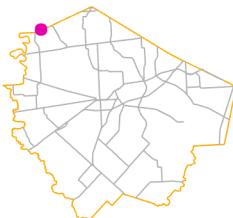
**Grid Page
A-016-B2**



Fort Bend Central Appraisal District (FBCAD) is not authorized to determine legal title to property or establish the legal boundaries of property. FBCAD establishes appraisal records based on information from various sources, including but not limited to deeds, plats and surveys provided to but not created by the district. FBCAD is not responsible for errors or omissions in information submitted to and reviewed by the district. If any errors or omission are detected, contact the GIS Department of the FBCAD.



Grid Location Reference



County Location Reference

A-007-P4

LAMAR
CISD
S01

0210
29.915 AC

A-14
N BROOKSHIRE

A-016-C1

A-016-B4

0212
43.5601 AC

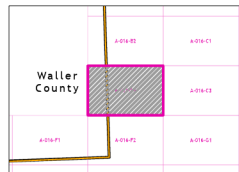
2021 Certified Tax Roll



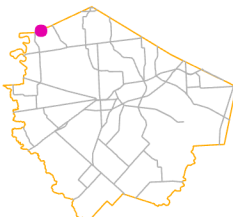
**Grid Page
A-016-B4**



Fort Bend Central Appraisal District (FBCAD) is not authorized to determine legal title to property or establish the legal boundaries of property. FBCAD establishes appraisal records based on information from various sources, including but not limited to deeds, plats and surveys provided to but not created by the district. FBCAD is not responsible for errors or omissions in information submitted to and reviewed by the district. If any errors or omission are detected, contact the GIS Department of the FBCAD.



Grid Location Reference



County Location Reference

A-016-B2

0212
43.5601 AC

**A-14
N BROOKSHIRE**

**LAMAR
CISD
S01**

A-016-C3

**A-17
I N CHARLES**

0207
18.0889 AC

A-016-F2

A-007-Q3

LAMAR
CISD
S01

0213
23.2567 AC

A-14
N BROOKSHIRE

48
10.194 AC

0481

6520-00

0475

47
7.605 AC

A-016-C3

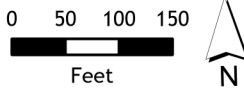
A-016-B2

A-016-C2

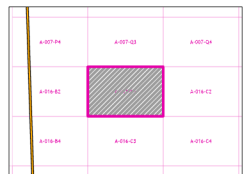
2021 Certified Tax Roll



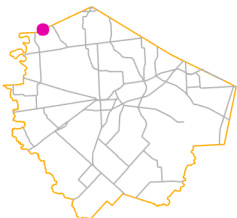
Grid Page
A-016-C1



Fort Bend Central Appraisal District (FBCAD) is not authorized to determine legal title to property or establish the legal boundaries of property. FBCAD establishes appraisal records based on information from various sources, including but not limited to deeds, plats and surveys provided to but not created by the district. FBCAD is not responsible for errors or omissions in information submitted to and reviewed by the district. If any errors or omission are detected, contact the GIS Department of the FBCAD.



Grid Location Reference



County Location Reference

A-007-Q4

LAMAR
CISD
S01

0211
12.8622 AC

A-14
N BROOKSHIRE

0511
5.1096 AC

49

52
5.5091 AC

51

50

PECAN HILL DR

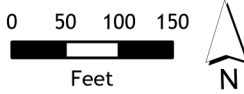
A-016-C4

6520-00

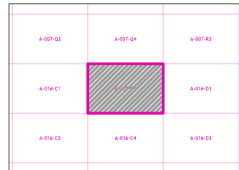
2021 Certified Tax Roll



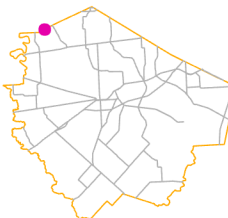
Grid Page
A-016-C2



Fort Bend Central Appraisal District (FBCAD) is not authorized to determine legal title to property or establish the legal boundaries of property. FBCAD establishes appraisal records based on information from various sources, including but not limited to deeds, plats and surveys provided to but not created by the district. FBCAD is not responsible for errors or omissions in information submitted to and reviewed by the district. If any errors or omission are detected, contact the GIS Department of the FBCAD.



Grid Location Reference



County Location Reference

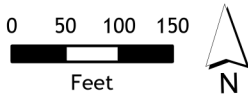
A-016-C1

A-016-D1

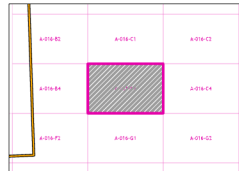
2021 Certified Tax Roll



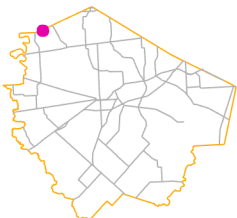
Grid Page
A-016-C3



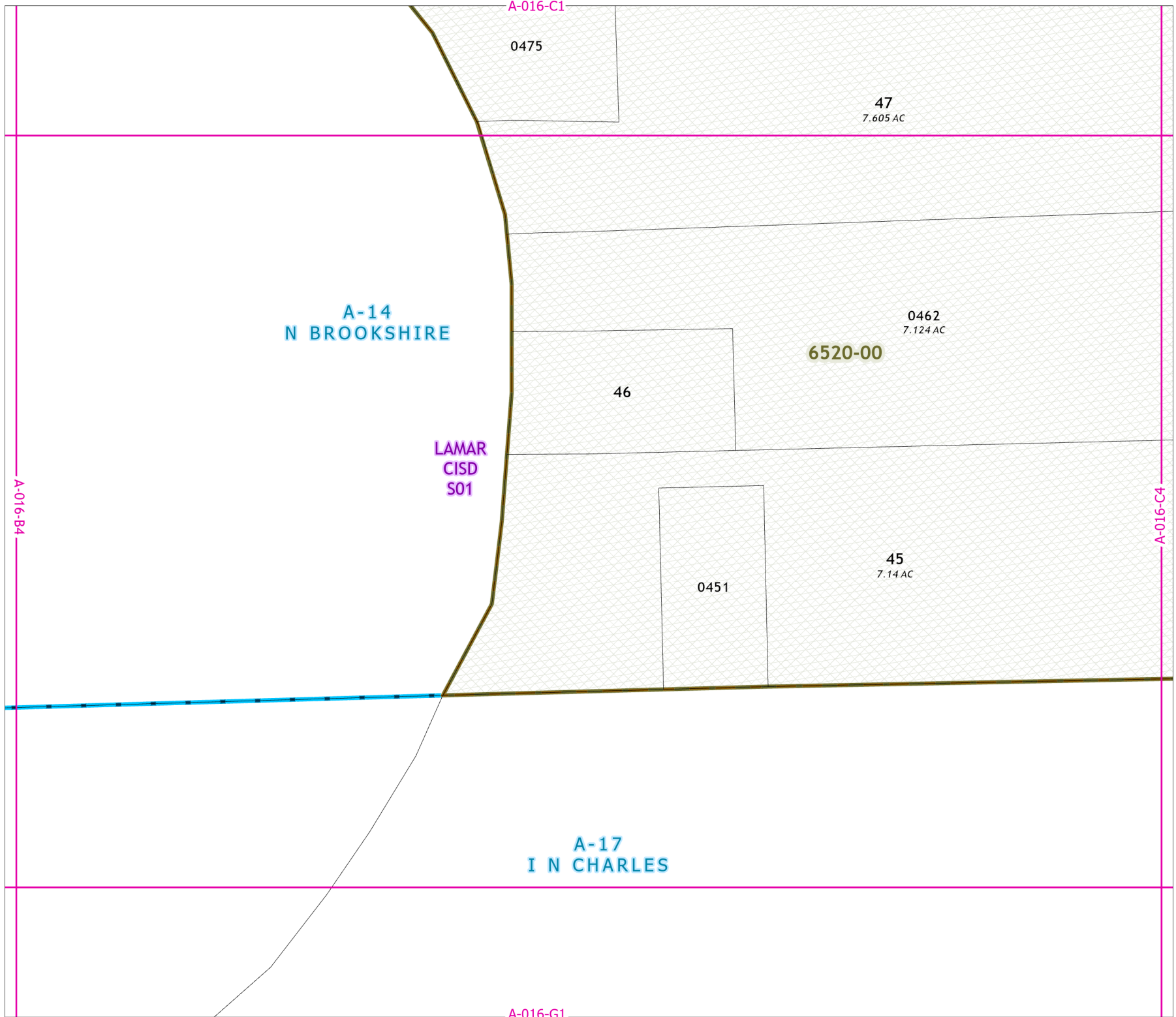
Fort Bend Central Appraisal District (FBCAD) is not authorized to determine legal title to property or establish the legal boundaries of property. FBCAD establishes appraisal records based on information from various sources, including but not limited to deeds, plats and surveys provided to but not created by the district. FBCAD is not responsible for errors or omissions in information submitted to and reviewed by the district. If any errors or omission are detected, contact the GIS Department of the FBCAD.



Grid Location Reference



County Location Reference



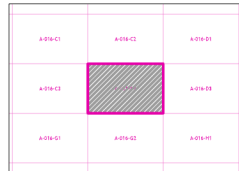
2021 Certified Tax Roll



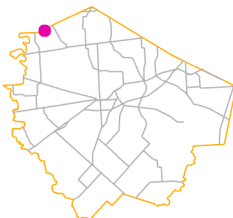
Grid Page
A-016-C4



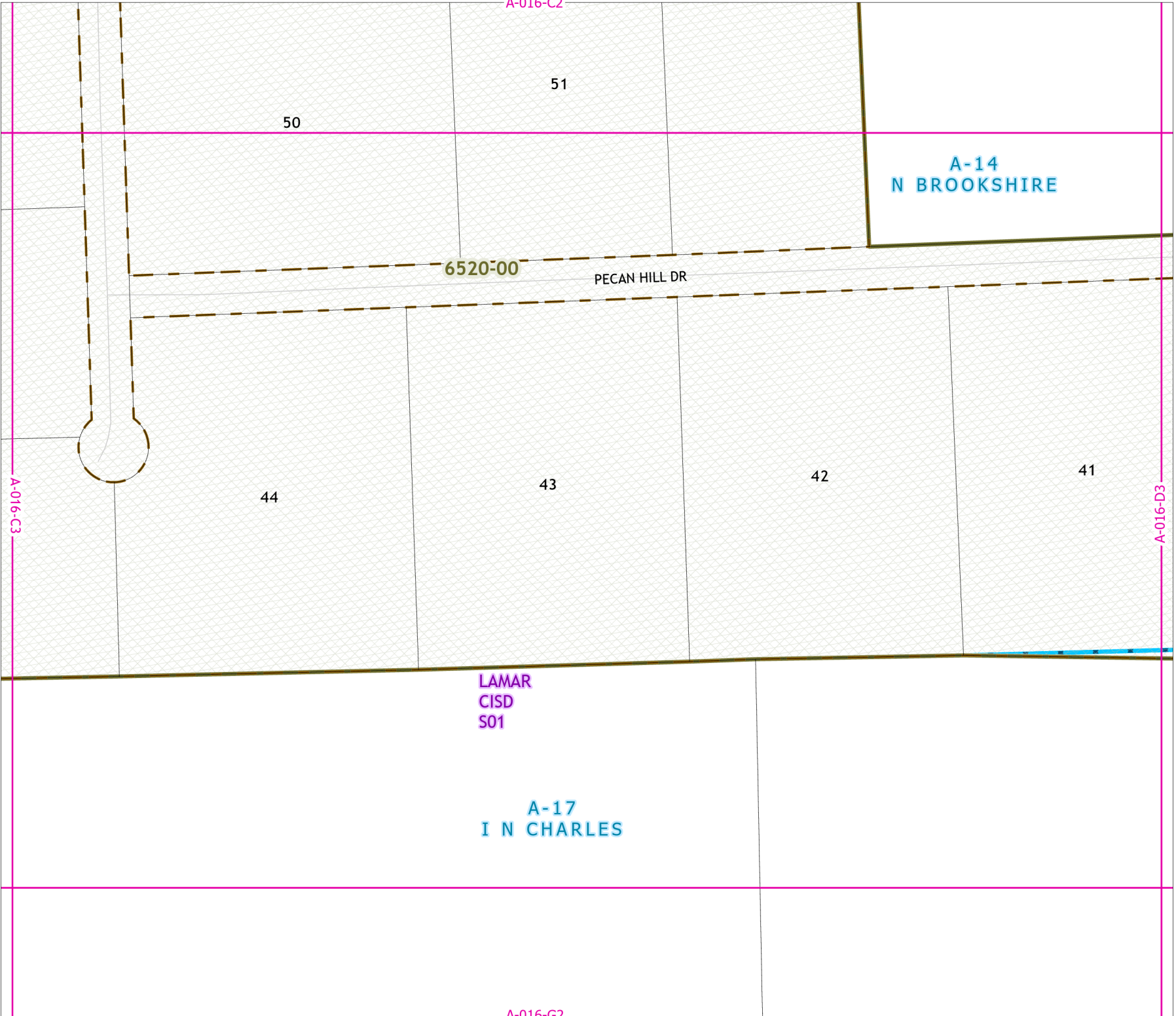
Fort Bend Central Appraisal District (FBCAD) is not authorized to determine legal title to property or establish the legal boundaries of property. FBCAD establishes appraisal records based on information from various sources, including but not limited to deeds, plats and surveys provided to but not created by the district. FBCAD is not responsible for errors or omissions in information submitted to and reviewed by the district. If any errors or omission are detected, contact the GIS Department of the FBCAD.



Grid Location Reference



County Location Reference





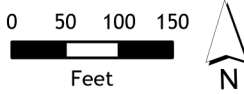
Grid Page A-016-D1

A-14
N BROOKSHIRE

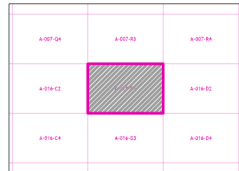
LAMAR
CISD
S01

A-016-C2

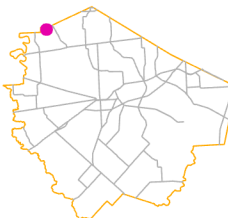
A-016-D2



Fort Bend Central Appraisal District (FBCAD) is not authorized to determine legal title to property or establish the legal boundaries of property. FBCAD establishes appraisal records based on information from various sources, including but not limited to deeds, plats and surveys provided to but not created by the district. FBCAD is not responsible for errors or omissions in information submitted to and reviewed by the district. If any errors or omission are detected, contact the GIS Department of the FBCAD.



Grid Location Reference



County Location Reference

6520-00

PECAN HILL DR

A-016-D3

A-007-R4

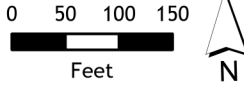
2021 Certified Tax Roll



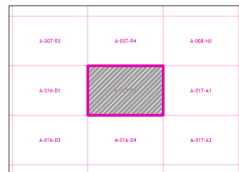
Grid Page
A-016-D2

A-14
N BROOKSHIRE

LAMAR
CISD
S01



Fort Bend Central Appraisal District (FBCAD) is not authorized to determine legal title to property or establish the legal boundaries of property. FBCAD establishes appraisal records based on information from various sources, including but not limited to deeds, plats and surveys provided to but not created by the district. FBCAD is not responsible for errors or omissions in information submitted to and reviewed by the district. If any errors or omission are detected, contact the GIS Department of the FBCAD.



Grid Location Reference



County Location Reference

A-016-D1

A-017-A1

6520-00

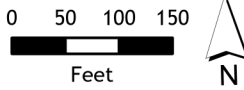
CHIPENDALE RD

0323

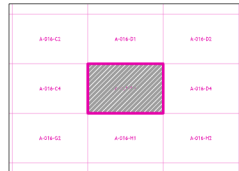
0331

0321

A-016-D4



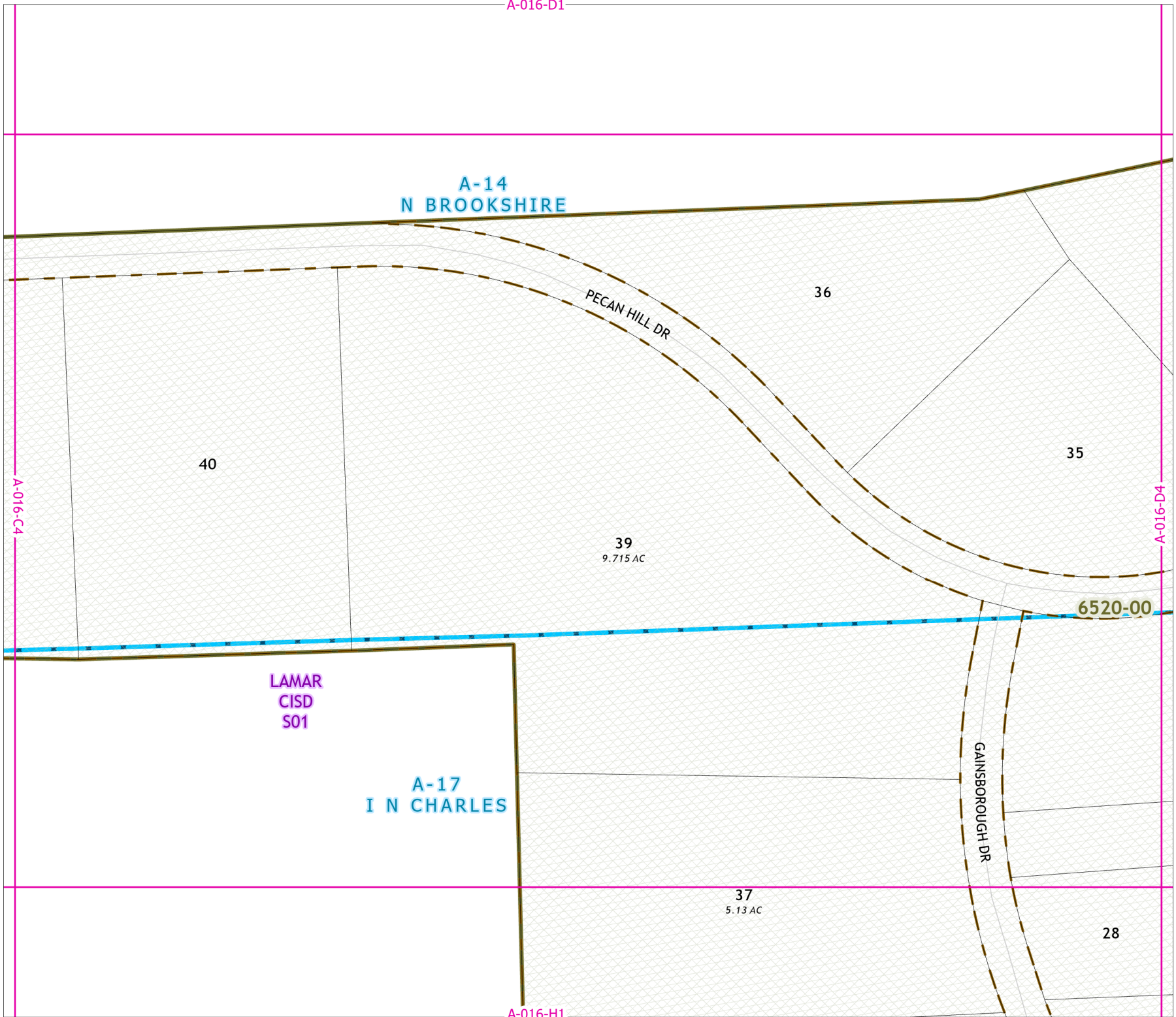
Fort Bend Central Appraisal District (FBCAD) is not authorized to determine legal title to property or establish the legal boundaries of property. FBCAD establishes appraisal records based on information from various sources, including but not limited to deeds, plats and surveys provided to but not created by the district. FBCAD is not responsible for errors or omissions in information submitted to and reviewed by the district. If any errors or omission are detected, contact the GIS Department of the FBCAD.



Grid Location Reference



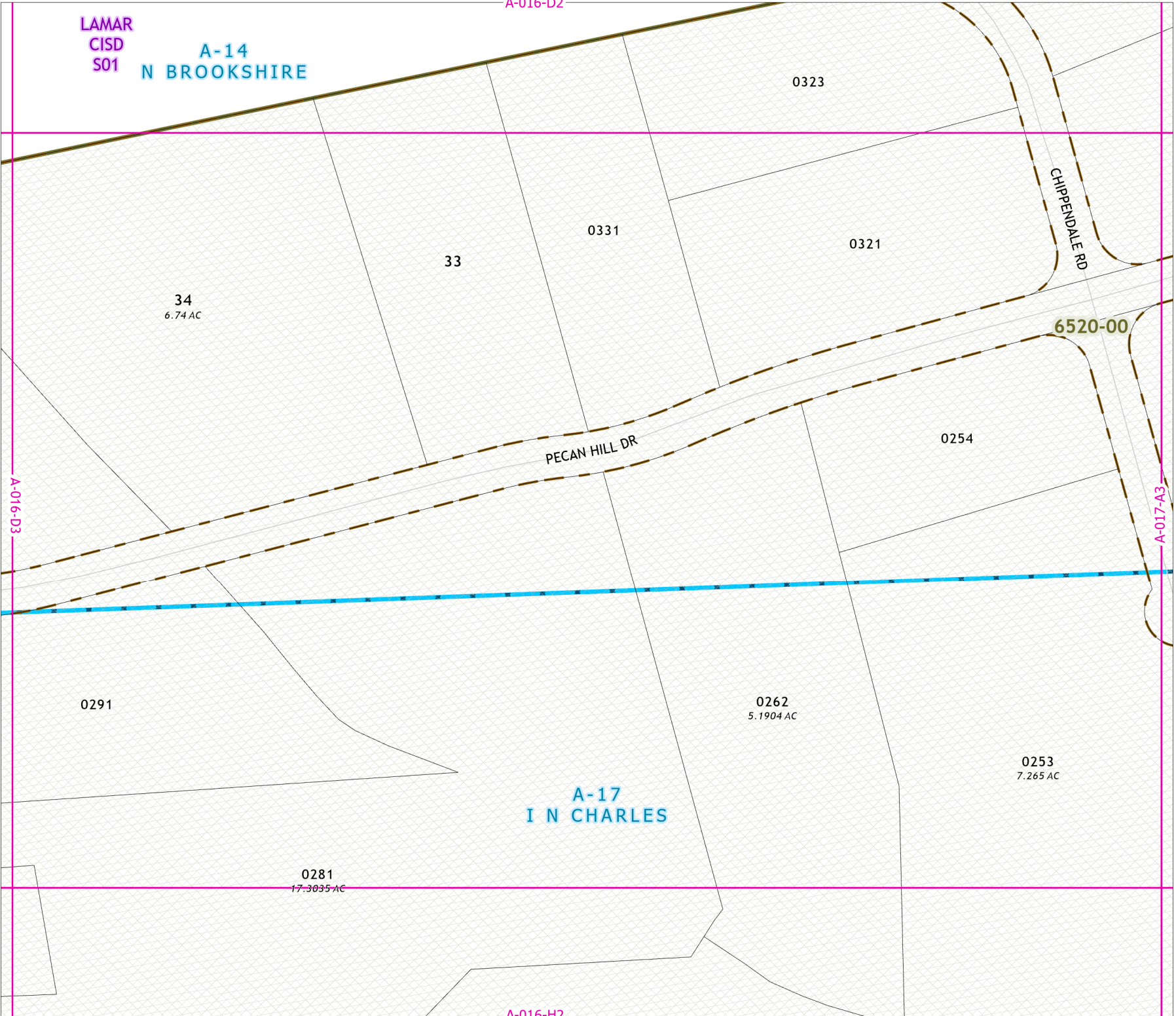
County Location Reference



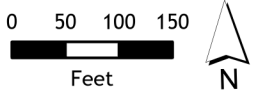
LAMAR
CISD
S01
A-14
N BROOKSHIRE



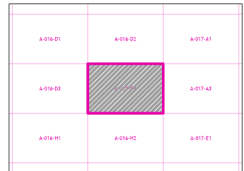
Grid Page
A-016-D4



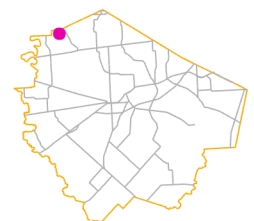
6520-00



Fort Bend Central Appraisal District (FBCAD) is not authorized to determine legal title to property or establish the legal boundaries of property. FBCAD establishes appraisal records based on information from various sources, including but not limited to deeds, plats and surveys provided to but not created by the district. FBCAD is not responsible for errors or omissions in information submitted to and reviewed by the district. If any errors or omission are detected, contact the GIS Department of the FBCAD.



Grid Location Reference



County Location Reference

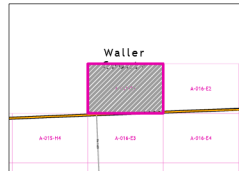
2021 Certified Tax Roll



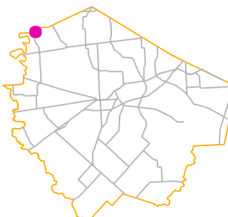
Grid Page
A-016-E1



Fort Bend Central Appraisal District (FBCAD) is not authorized to determine legal title to property or establish the legal boundaries of property. FBCAD establishes appraisal records based on information from various sources, including but not limited to deeds, plats and surveys provided to but not created by the district. FBCAD is not responsible for errors or omissions in information submitted to and reviewed by the district. If any errors or omission are detected, contact the GIS Department of the FBCAD.



Grid Location Reference



County Location Reference

A-016-E2

A-28
R FOSTER
LAMAR
CISD
S01

A-016-E3

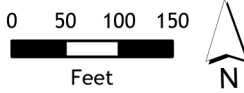
COUNTY LINE
RD

FM 1489 RD

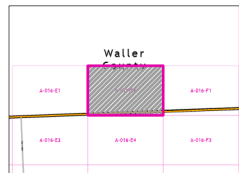
2021 Certified Tax Roll



**Grid Page
A-016-E2**



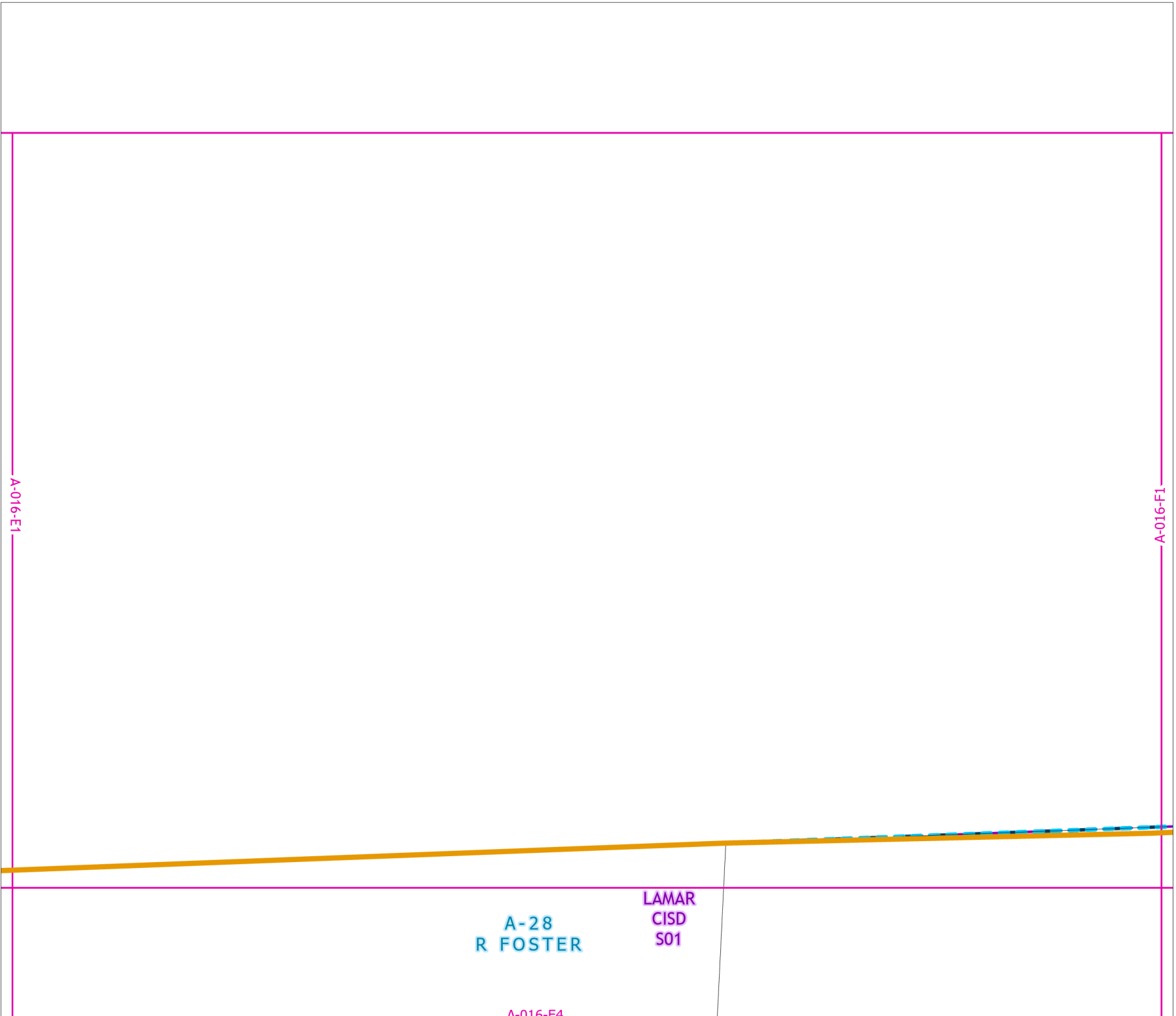
Fort Bend Central Appraisal District (FBCAD) is not authorized to determine legal title to property or establish the legal boundaries of property. FBCAD establishes appraisal records based on information from various sources, including but not limited to deeds, plats and surveys provided to but not created by the district. FBCAD is not responsible for errors or omissions in information submitted to and reviewed by the district. If any errors or omission are detected, contact the GIS Department of the FBCAD.



Grid Location Reference

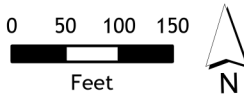


County Location Reference

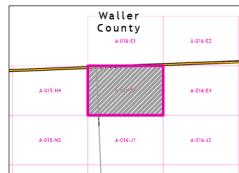




Grid Page
A-016-E3



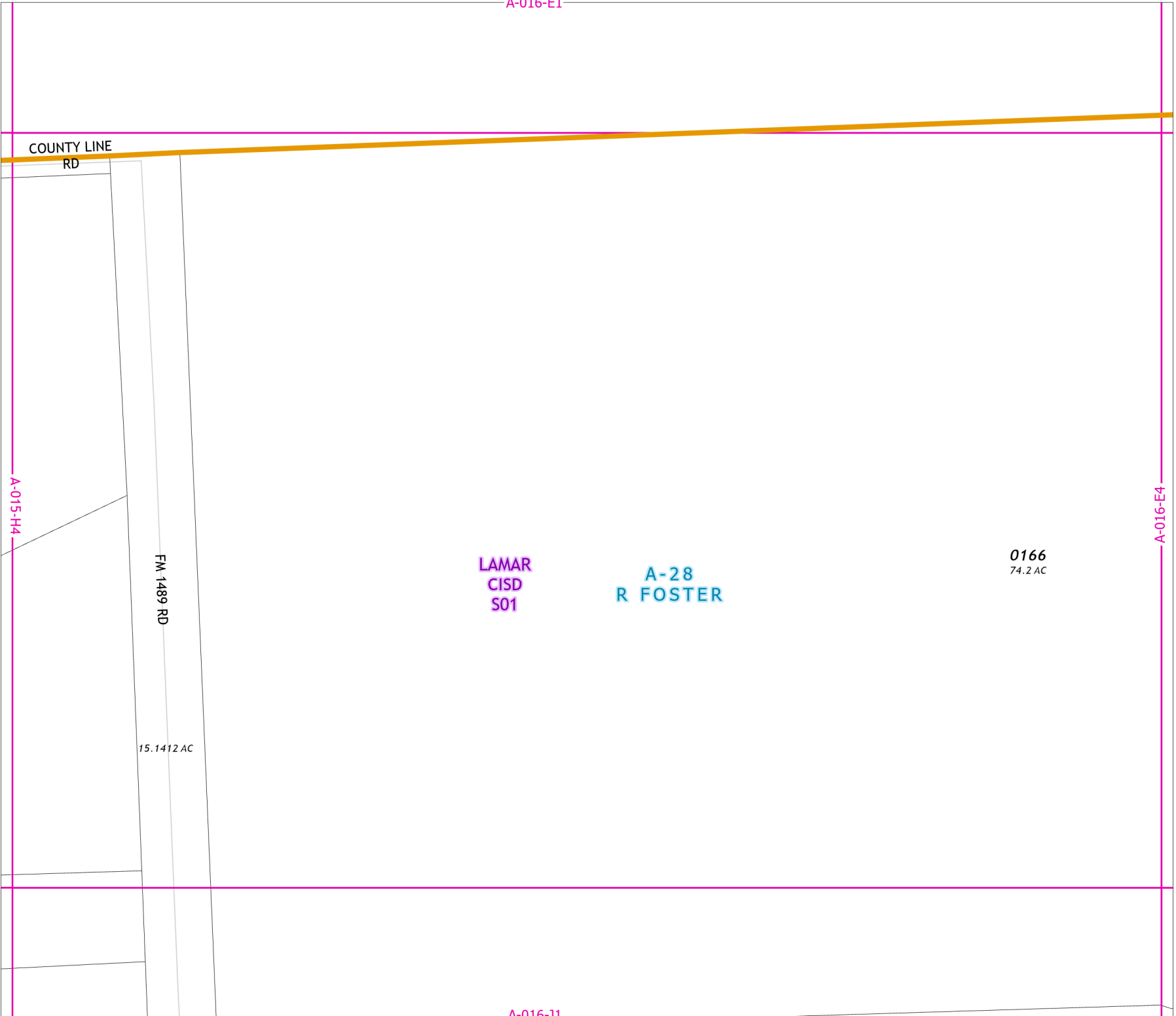
Fort Bend Central Appraisal District (FBCAD) is not authorized to determine legal title to property or establish the legal boundaries of property. FBCAD establishes appraisal records based on information from various sources, including but not limited to deeds, plats and surveys provided to but not created by the district. FBCAD is not responsible for errors or omissions in information submitted to and reviewed by the district. If any errors or omission are detected, contact the GIS Department of the FBCAD.



Grid Location Reference



County Location Reference

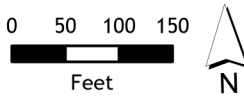


A-016-E2

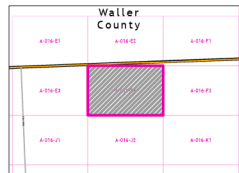
2021 Certified Tax Roll



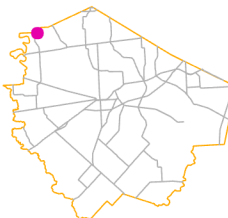
Grid Page
A-016-E4



Fort Bend Central Appraisal District (FBCAD) is not authorized to determine legal title to property or establish the legal boundaries of property. FBCAD establishes appraisal records based on information from various sources, including but not limited to deeds, plats and surveys provided to but not created by the district. FBCAD is not responsible for errors or omissions in information submitted to and reviewed by the district. If any errors or omission are detected, contact the GIS Department of the FBCAD.



Grid Location Reference



County Location Reference

LAMAR
CISD
S01

A-28
R FOSTER

HUNT RD

A-016-J2

A-016-E3

A-016-F3

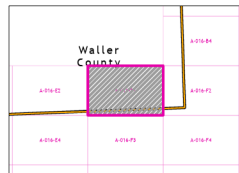
2021 Certified Tax Roll



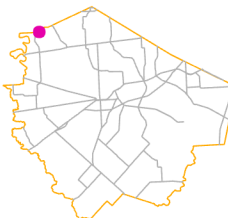
Grid Page
A-016-F1



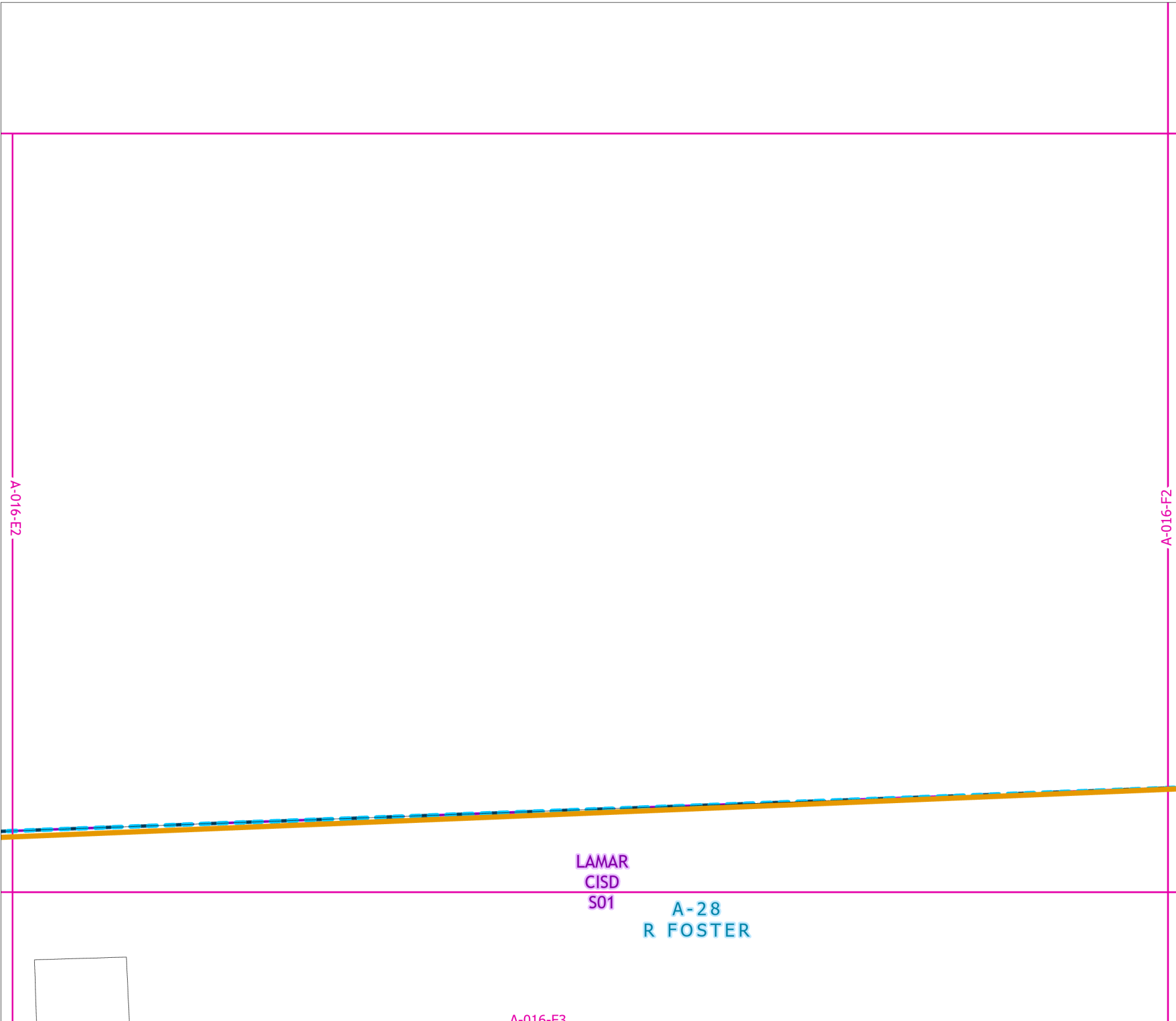
Fort Bend Central Appraisal District (FBCAD) is not authorized to determine legal title to property or establish the legal boundaries of property. FBCAD establishes appraisal records based on information from various sources, including but not limited to deeds, plats and surveys provided to but not created by the district. FBCAD is not responsible for errors or omissions in information submitted to and reviewed by the district. If any errors or omission are detected, contact the GIS Department of the FBCAD.



Grid Location Reference



County Location Reference



LAMAR
CISD
S01

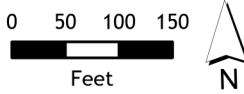
A-28
R FOSTER

A-016-F3

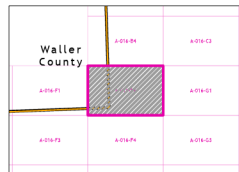
2021 Certified Tax Roll



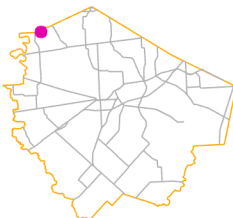
Grid Page
A-016-F2



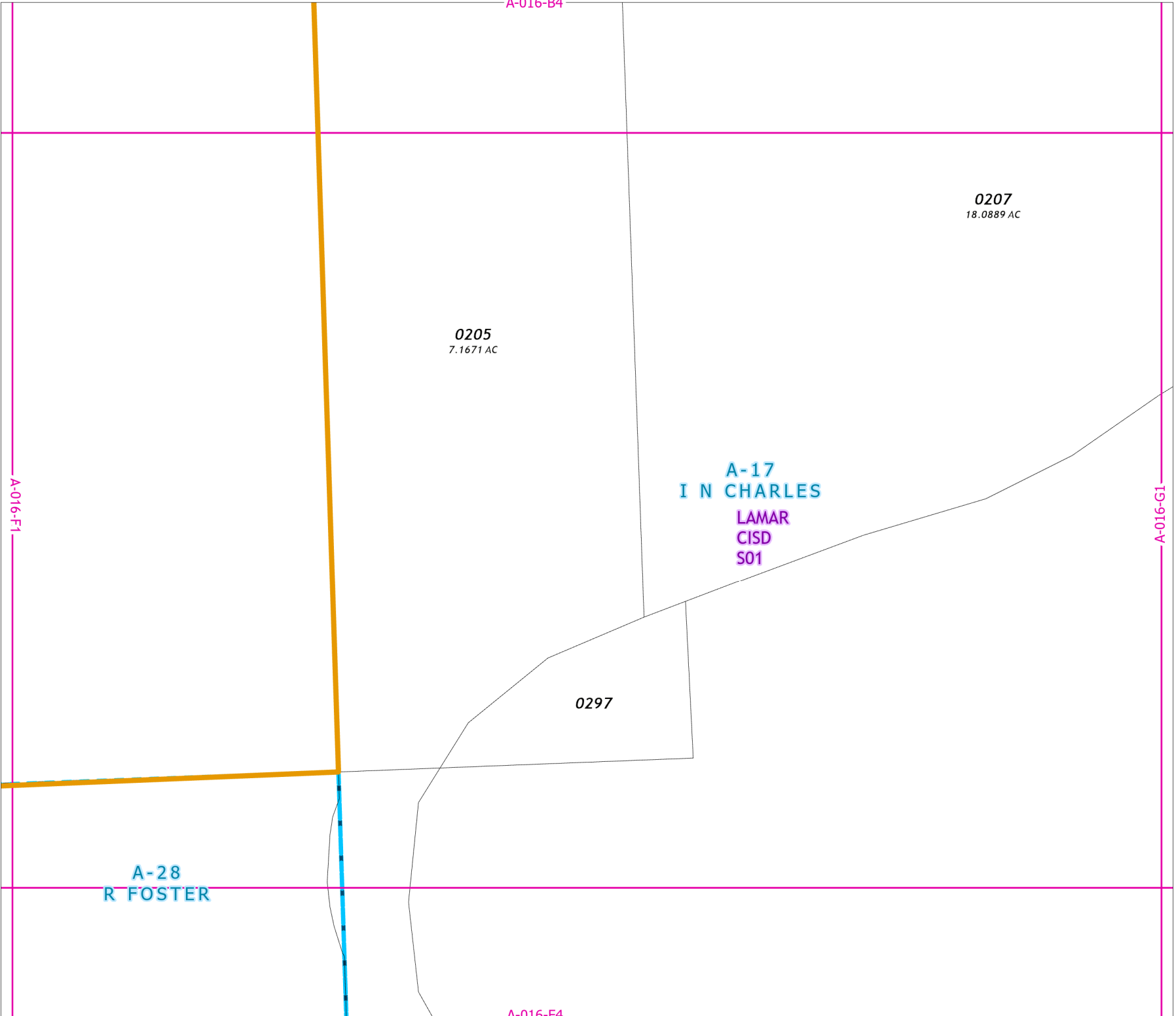
Fort Bend Central Appraisal District (FBCAD) is not authorized to determine legal title to property or establish the legal boundaries of property. FBCAD establishes appraisal records based on information from various sources, including but not limited to deeds, plats and surveys provided to but not created by the district. FBCAD is not responsible for errors or omissions in information submitted to and reviewed by the district. If any errors or omission are detected, contact the GIS Department of the FBCAD.

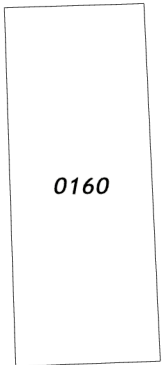


Grid Location Reference



County Location Reference





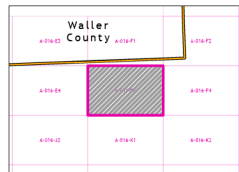
A-28
R FOSTER

LAMAR
CISD
S01

0161
71.338 AC



Fort Bend Central Appraisal District (FBCAD) is not authorized to determine legal title to property or establish the legal boundaries of property. FBCAD establishes appraisal records based on information from various sources, including but not limited to deeds, plats and surveys provided to but not created by the district. FBCAD is not responsible for errors or omissions in information submitted to and reviewed by the district. If any errors or omission are detected, contact the GIS Department of the FBCAD.



Grid Location Reference



County Location Reference

HUNT RD

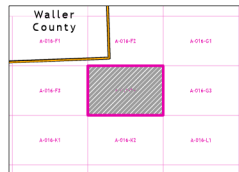
2021 Certified Tax Roll



Grid Page
A-016-F4



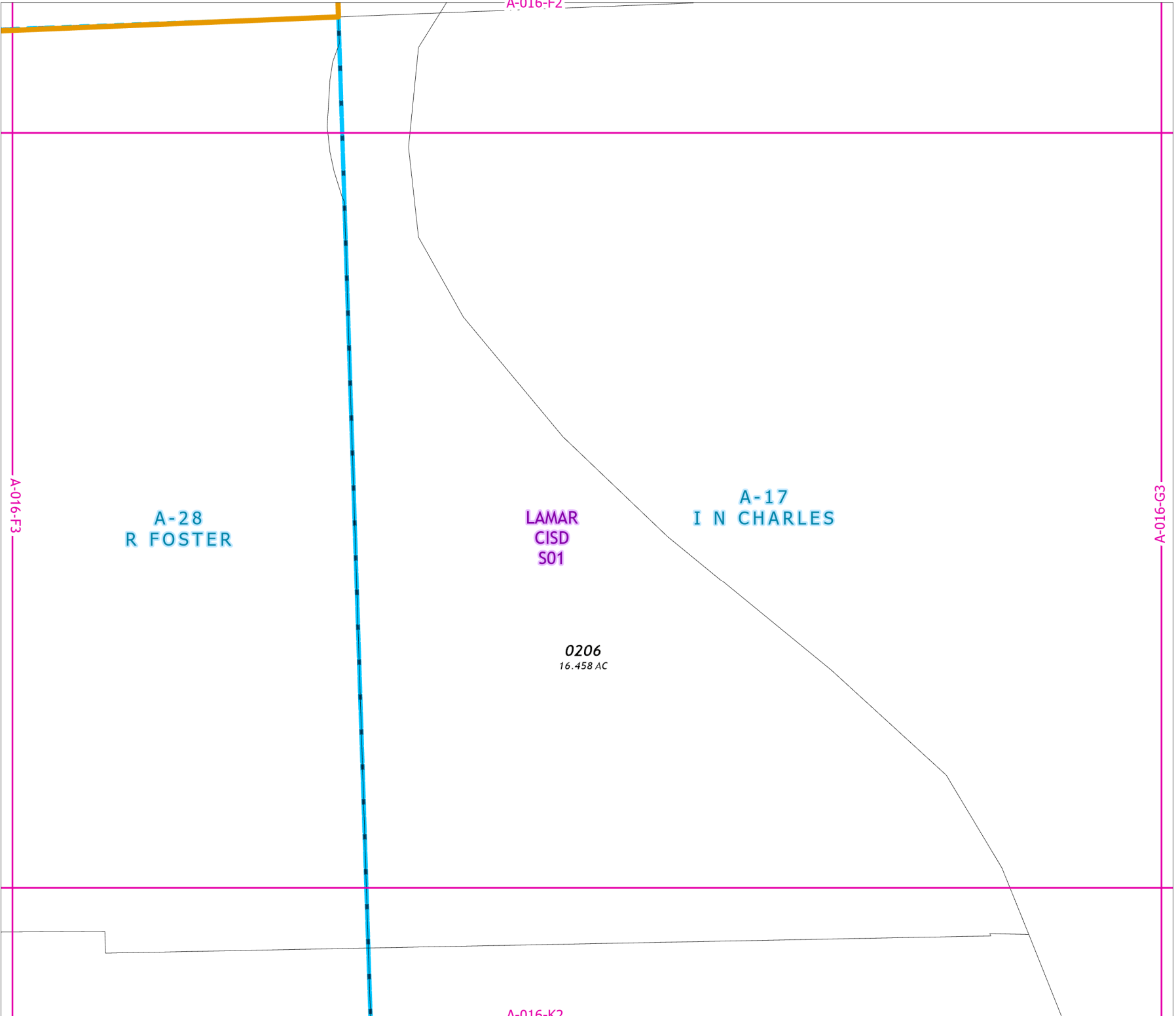
Fort Bend Central Appraisal District (FBCAD) is not authorized to determine legal title to property or establish the legal boundaries of property. FBCAD establishes appraisal records based on information from various sources, including but not limited to deeds, plats and surveys provided to but not created by the district. FBCAD is not responsible for errors or omissions in information submitted to and reviewed by the district. If any errors or omission are detected, contact the GIS Department of the FBCAD.



Grid Location Reference



County Location Reference



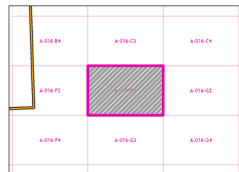
2021 Certified Tax Roll



**Grid Page
A-016-G1**



Fort Bend Central Appraisal District (FBCAD) is not authorized to determine legal title to property or establish the legal boundaries of property. FBCAD establishes appraisal records based on information from various sources, including but not limited to deeds, plats and surveys provided to but not created by the district. FBCAD is not responsible for errors or omissions in information submitted to and reviewed by the district. If any errors or omission are detected, contact the GIS Department of the FBCAD.



Grid Location Reference



County Location Reference

A-016-C3

**A-17
I N CHARLES**

**LAMAR
CISD
S01**

A-016-F2

A-016-G2

A-016-G3

A-016-C4

2021 Certified Tax Roll



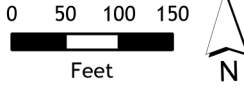
**Grid Page
A-016-G2**

**A-17
I N CHARLES**

**LAMAR
CISD
S01**

A-016-G1

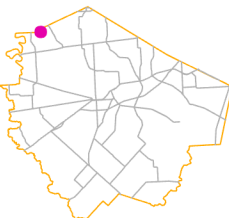
A-016-H1



Fort Bend Central Appraisal District (FBCAD) is not authorized to determine legal title to property or establish the legal boundaries of property. FBCAD establishes appraisal records based on information from various sources, including but not limited to deeds, plats and surveys provided to but not created by the district. FBCAD is not responsible for errors or omissions in information submitted to and reviewed by the district. If any errors or omission are detected, contact the GIS Department of the FBCAD.

| | | |
|----------|----------|----------|
| A-016-C2 | A-016-C4 | A-016-D2 |
| A-016-G1 | A-016-G2 | A-016-H1 |
| A-016-G3 | A-016-G4 | A-016-H3 |

Grid Location Reference



County Location Reference

A-016-G4

2021 Certified Tax Roll



**Grid Page
A-016-G3**

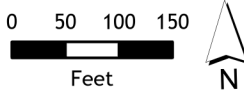
0270
226.8314 AC

**A-17
I N CHARLES**

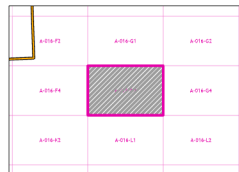
**LAMAR
CISD
S01**

A-016-F4

A-016-G4



Fort Bend Central Appraisal District (FBCAD) is not authorized to determine legal title to property or establish the legal boundaries of property. FBCAD establishes appraisal records based on information from various sources, including but not limited to deeds, plats and surveys provided to but not created by the district. FBCAD is not responsible for errors or omissions in information submitted to and reviewed by the district. If any errors or omission are detected, contact the GIS Department of the FBCAD.



Grid Location Reference



County Location Reference

2021 Certified Tax Roll

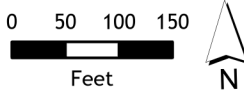


**Grid Page
A-016-G4**

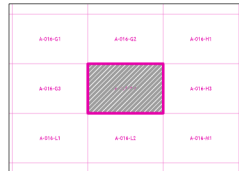
**A-17
I N CHARLES
LAMAR
CISD
S01**

A-016-G3

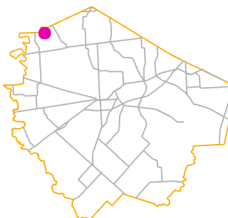
A-016-H3



Fort Bend Central Appraisal District (FBCAD) is not authorized to determine legal title to property or establish the legal boundaries of property. FBCAD establishes appraisal records based on information from various sources, including but not limited to deeds, plats and surveys provided to but not created by the district. FBCAD is not responsible for errors or omissions in information submitted to and reviewed by the district. If any errors or omission are detected, contact the GIS Department of the FBCAD.



Grid Location Reference



County Location Reference

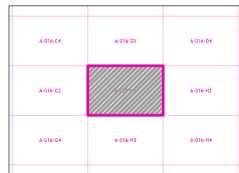
2021 Certified Tax Roll



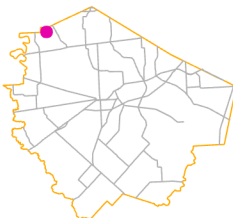
Grid Page
A-016-H1



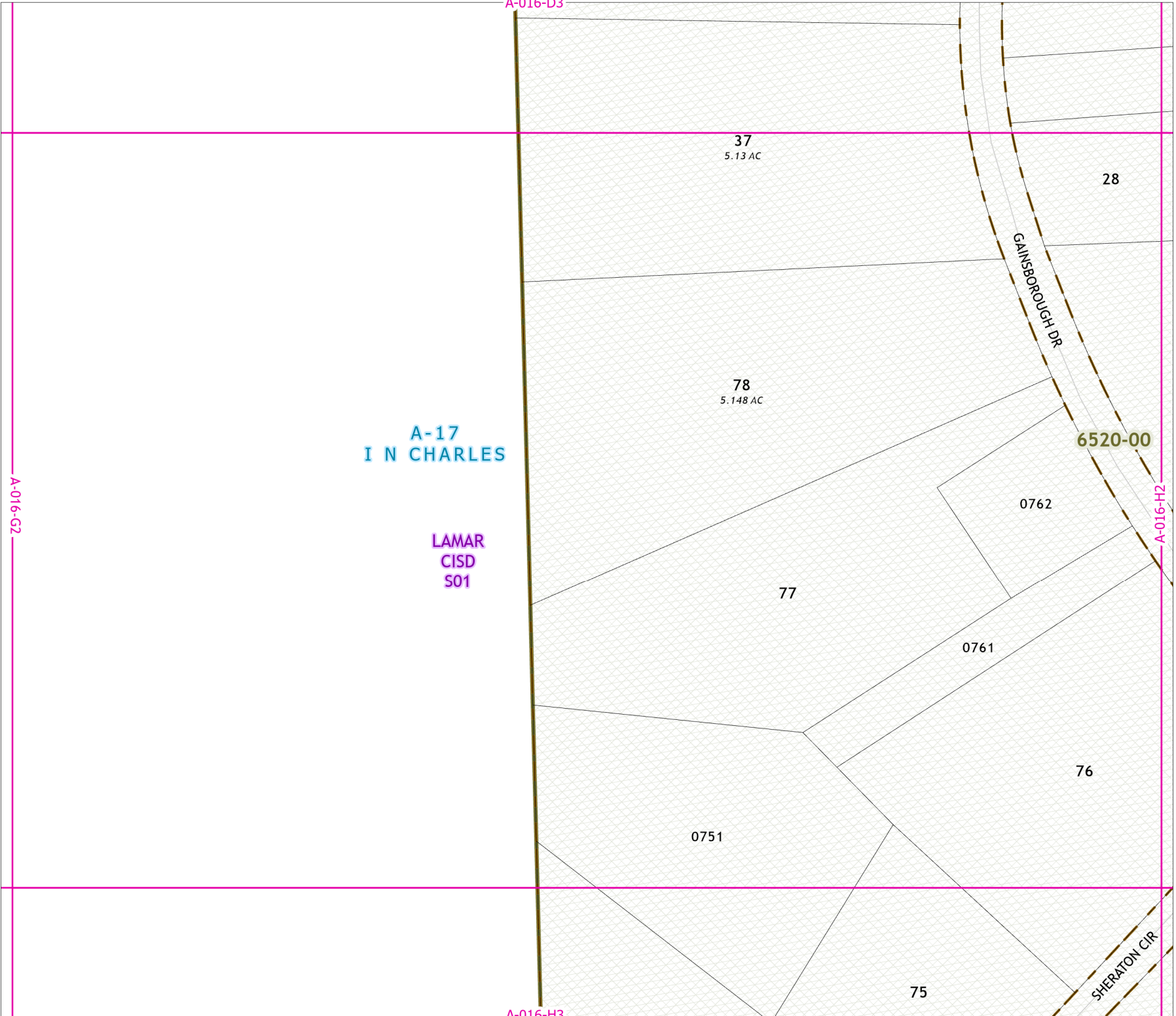
Fort Bend Central Appraisal District (FBCAD) is not authorized to determine legal title to property or establish the legal boundaries of property. FBCAD establishes appraisal records based on information from various sources, including but not limited to deeds, plats and surveys provided to but not created by the district. FBCAD is not responsible for errors or omissions in information submitted to and reviewed by the district. If any errors or omission are detected, contact the GIS Department of the FBCAD.



Grid Location Reference



County Location Reference



A-17
I N CHARLES

LAMAR
CISD
S01

A-016-G2

A-016-D3

A-016-H3

A-016-H2

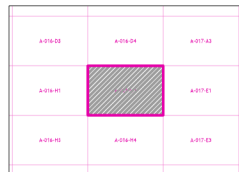
2021 Certified Tax Roll



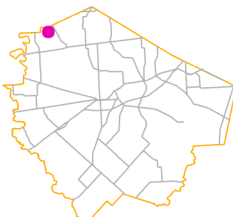
Grid Page
A-016-H2



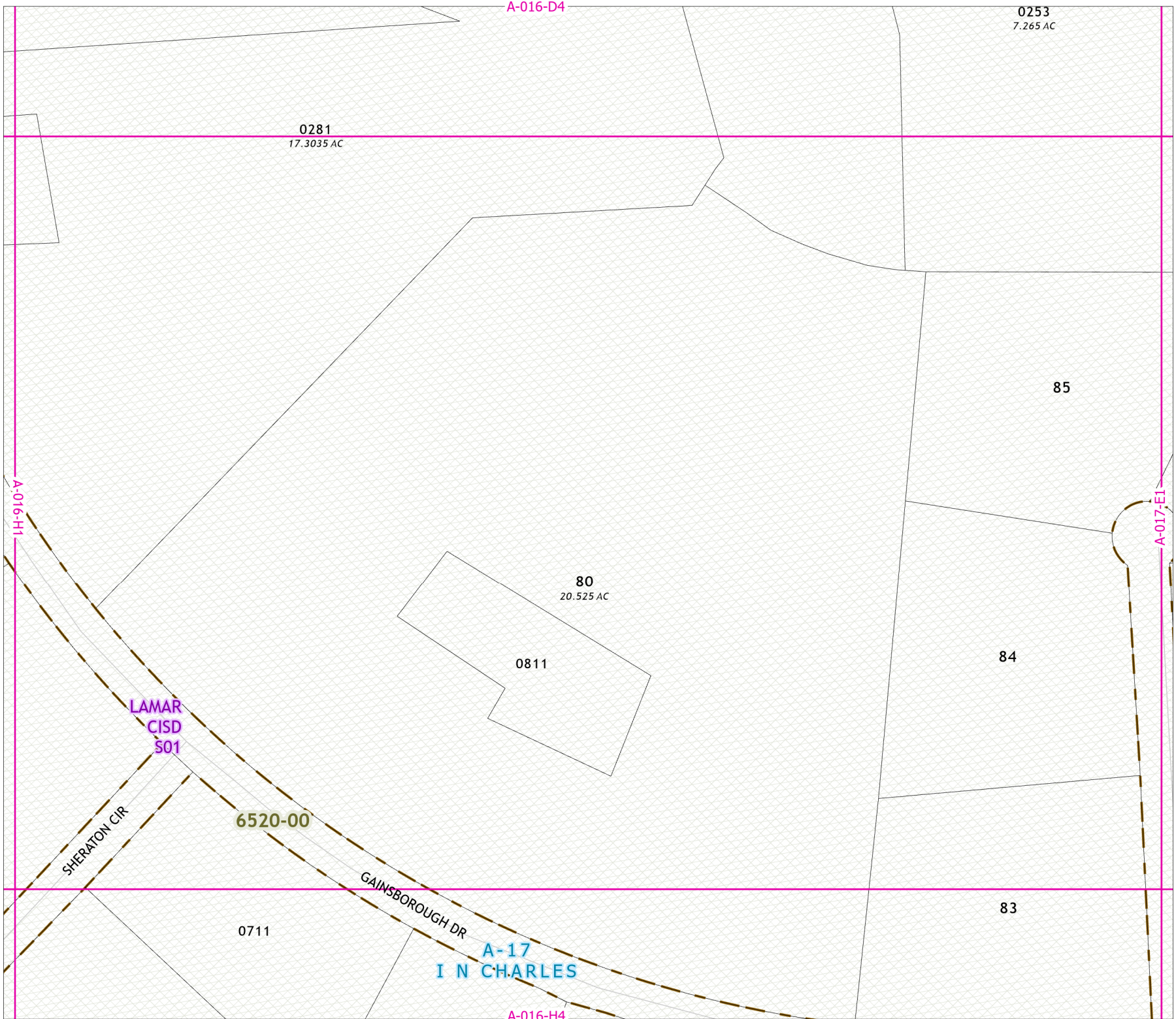
Fort Bend Central Appraisal District (FBCAD) is not authorized to determine legal title to property or establish the legal boundaries of property. FBCAD establishes appraisal records based on information from various sources, including but not limited to deeds, plats and surveys provided to but not created by the district. FBCAD is not responsible for errors or omissions in information submitted to and reviewed by the district. If any errors or omission are detected, contact the GIS Department of the FBCAD.



Grid Location Reference



County Location Reference



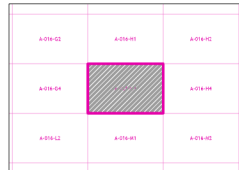
2021 Certified Tax Roll



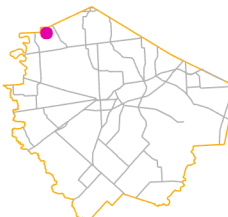
Grid Page
A-016-H3



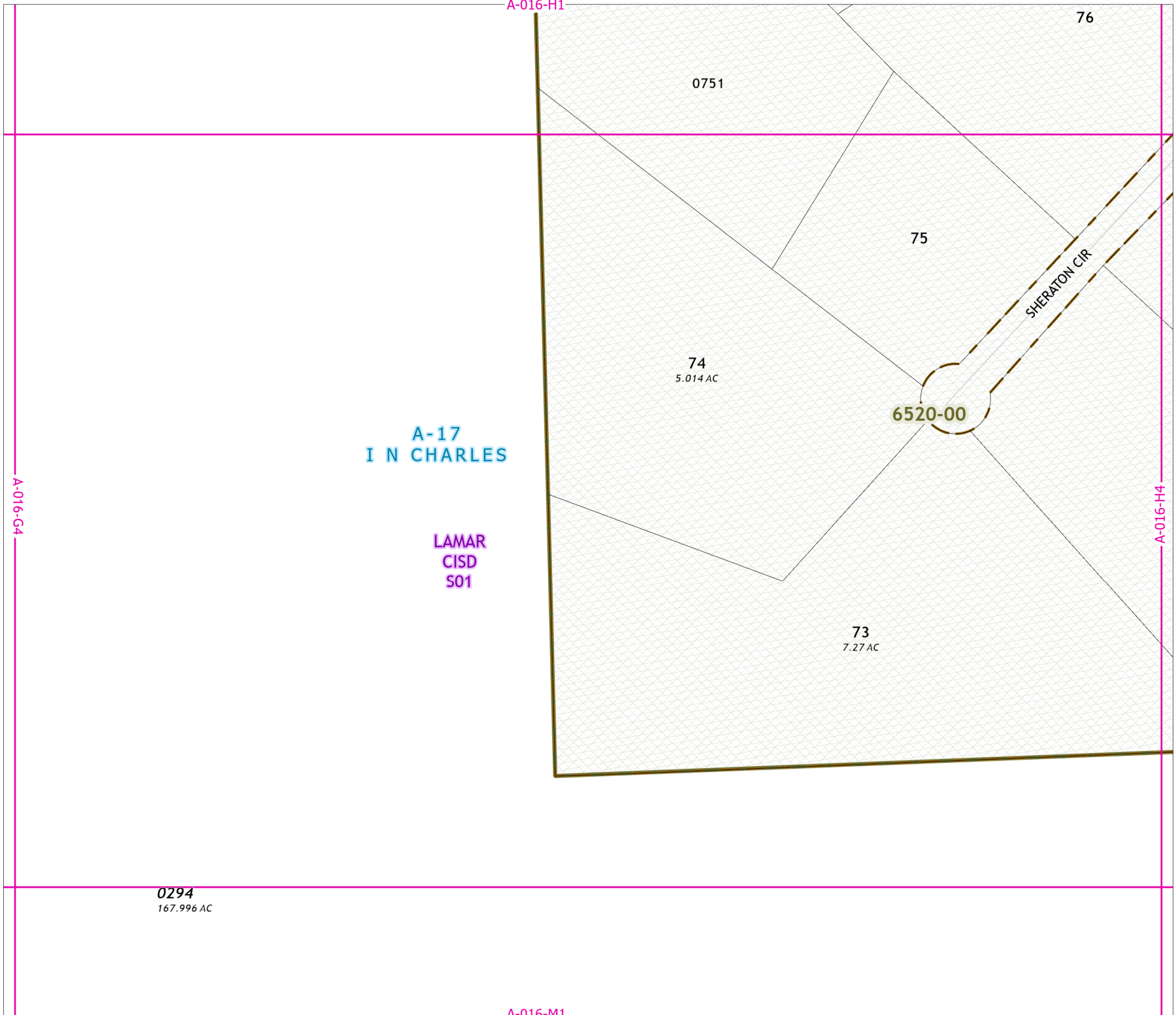
Fort Bend Central Appraisal District (FBCAD) is not authorized to determine legal title to property or establish the legal boundaries of property. FBCAD establishes appraisal records based on information from various sources, including but not limited to deeds, plats and surveys provided to but not created by the district. FBCAD is not responsible for errors or omissions in information submitted to and reviewed by the district. If any errors or omission are detected, contact the GIS Department of the FBCAD.



Grid Location Reference



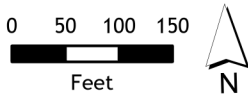
County Location Reference



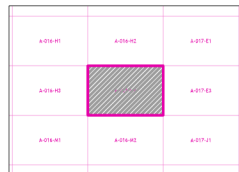
2021 Certified Tax Roll



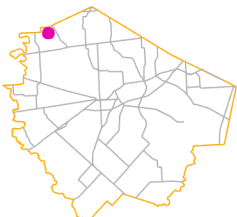
Grid Page
A-016-H4



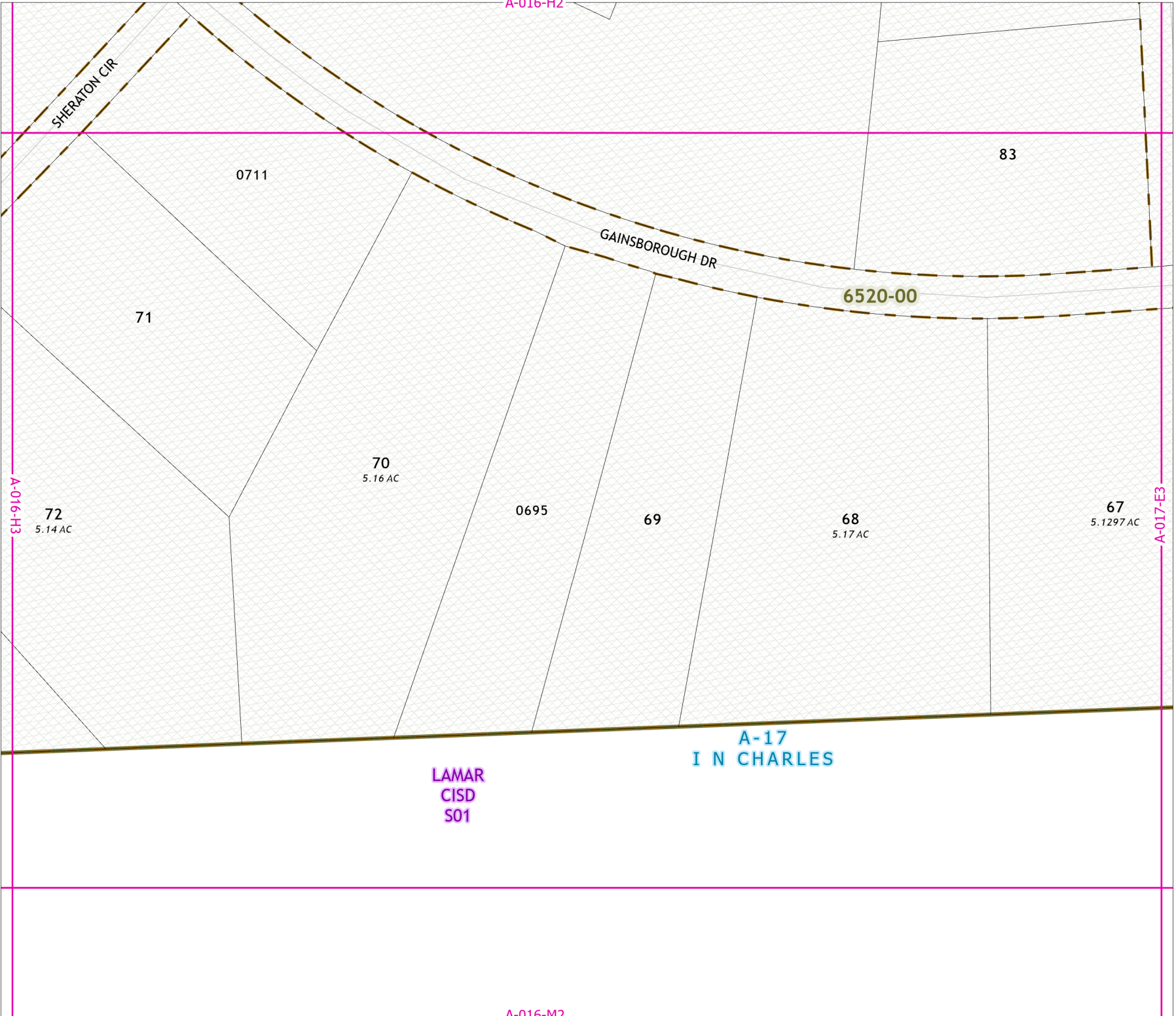
Fort Bend Central Appraisal District (FBCAD) is not authorized to determine legal title to property or establish the legal boundaries of property. FBCAD establishes appraisal records based on information from various sources, including but not limited to deeds, plats and surveys provided to but not created by the district. FBCAD is not responsible for errors or omissions in information submitted to and reviewed by the district. If any errors or omission are detected, contact the GIS Department of the FBCAD.

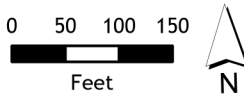
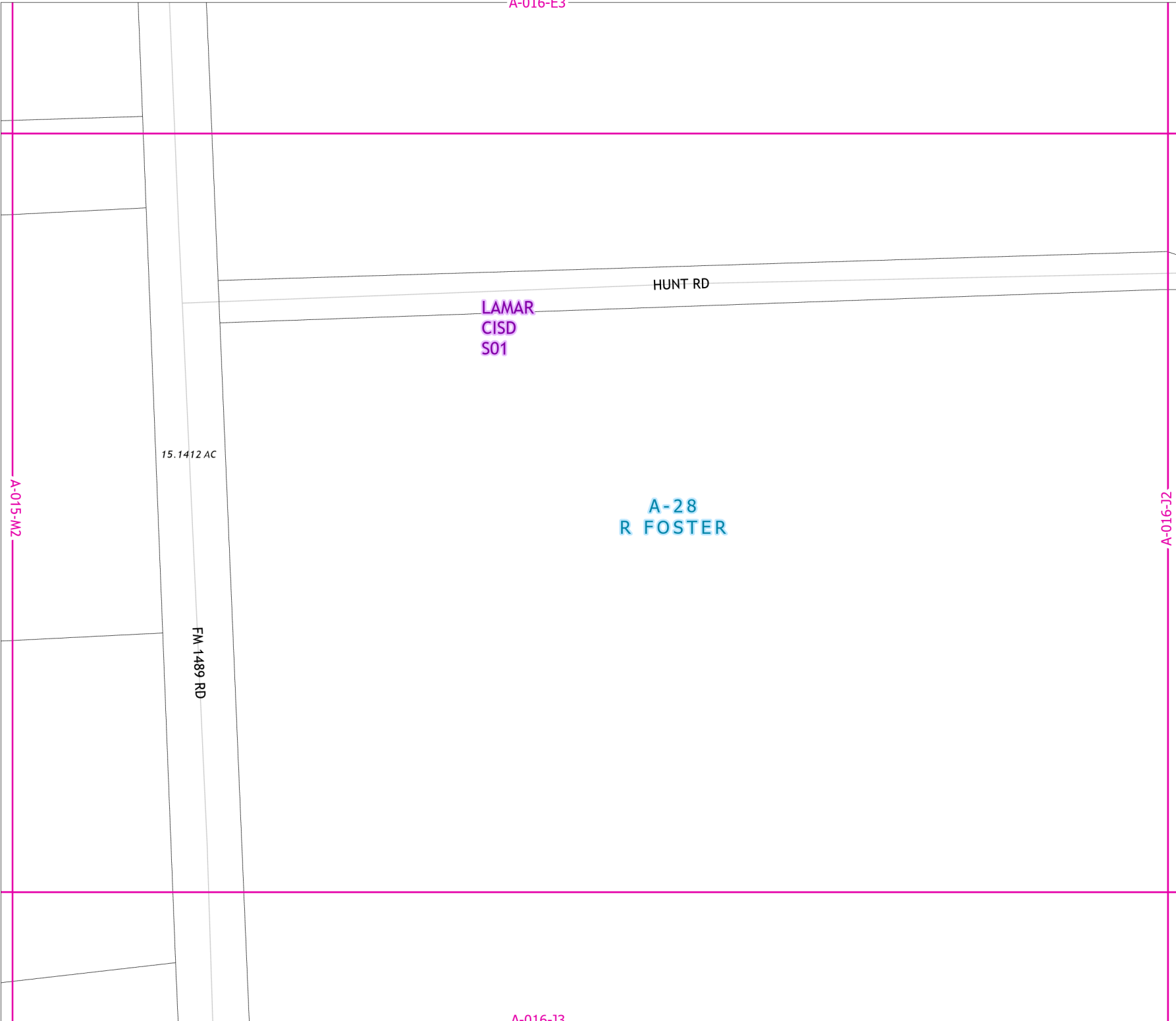


Grid Location Reference

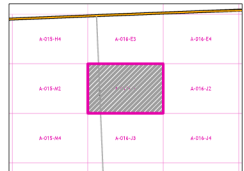


County Location Reference

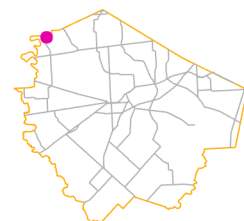




Fort Bend Central Appraisal District (FBCAD) is not authorized to determine legal title to property or establish the legal boundaries of property. FBCAD establishes appraisal records based on information from various sources, including but not limited to deeds, plats and surveys provided to but not created by the district. FBCAD is not responsible for errors or omissions in information submitted to and reviewed by the district. If any errors or omission are detected, contact the GIS Department of the FBCAD.



Grid Location Reference



County Location Reference

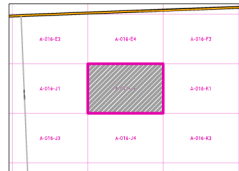
2021 Certified Tax Roll



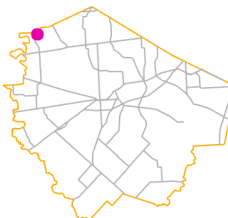
Grid Page
A-016-J2



Fort Bend Central Appraisal District (FBCAD) is not authorized to determine legal title to property or establish the legal boundaries of property. FBCAD establishes appraisal records based on information from various sources, including but not limited to deeds, plats and surveys provided to but not created by the district. FBCAD is not responsible for errors or omissions in information submitted to and reviewed by the district. If any errors or omission are detected, contact the GIS Department of the FBCAD.



Grid Location Reference



County Location Reference

A-016-E4

HUNT RD

LAMAR
CISD
S01

A-28
R FOSTER

0165
132.675 AC

A-016-J4

A-016-J1

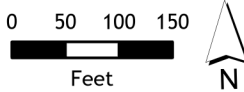
A-016-K1

A-016-J1

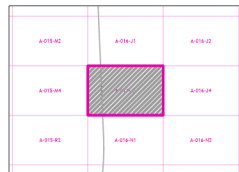
2021 Certified Tax Roll



Grid Page
A-016-J3



Fort Bend Central Appraisal District (FBCAD) is not authorized to determine legal title to property or establish the legal boundaries of property. FBCAD establishes appraisal records based on information from various sources, including but not limited to deeds, plats and surveys provided to but not created by the district. FBCAD is not responsible for errors or omissions in information submitted to and reviewed by the district. If any errors or omission are detected, contact the GIS Department of the FBCAD.



Grid Location Reference



County Location Reference

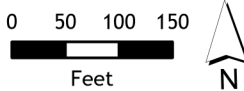


0165
132.675 AC

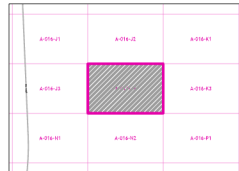
2021 Certified Tax Roll



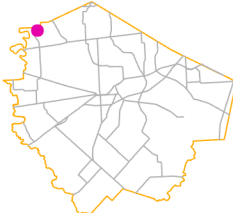
Grid Page
A-016-J4



Fort Bend Central Appraisal District (FBCAD) is not authorized to determine legal title to property or establish the legal boundaries of property. FBCAD establishes appraisal records based on information from various sources, including but not limited to deeds, plats and surveys provided to but not created by the district. FBCAD is not responsible for errors or omissions in information submitted to and reviewed by the district. If any errors or omission are detected, contact the GIS Department of the FBCAD.



Grid Location Reference



County Location Reference

LAMAR
CISD
S01

A-28
R FOSTER



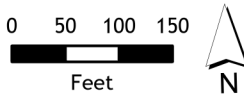
Grid Page
A-016-K1

0163
18.902 AC

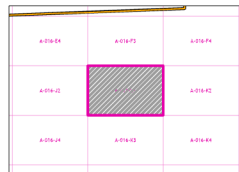
HUNT RD

A-28
R FOSTER

LAMAR
CISD
S01



Fort Bend Central Appraisal District (FBCAD) is not authorized to determine legal title to property or establish the legal boundaries of property. FBCAD establishes appraisal records based on information from various sources, including but not limited to deeds, plats and surveys provided to but not created by the district. FBCAD is not responsible for errors or omissions in information submitted to and reviewed by the district. If any errors or omission are detected, contact the GIS Department of the FBCAD.



Grid Location Reference

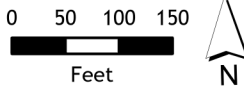


County Location Reference

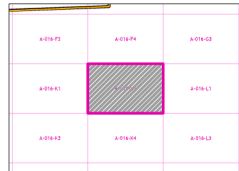
2021 Certified Tax Roll



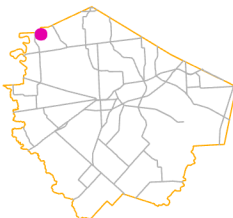
Grid Page
A-016-K2



Fort Bend Central Appraisal District (FBCAD) is not authorized to determine legal title to property or establish the legal boundaries of property. FBCAD establishes appraisal records based on information from various sources, including but not limited to deeds, plats and surveys provided to but not created by the district. FBCAD is not responsible for errors or omissions in information submitted to and reviewed by the district. If any errors or omission are detected, contact the GIS Department of the FBCAD.



Grid Location Reference



County Location Reference



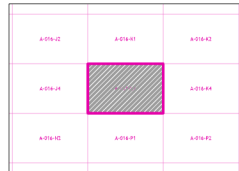
2021 Certified Tax Roll



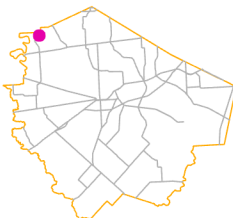
Grid Page
A-016-K3



Fort Bend Central Appraisal District (FBCAD) is not authorized to determine legal title to property or establish the legal boundaries of property. FBCAD establishes appraisal records based on information from various sources, including but not limited to deeds, plats and surveys provided to but not created by the district. FBCAD is not responsible for errors or omissions in information submitted to and reviewed by the district. If any errors or omission are detected, contact the GIS Department of the FBCAD.



Grid Location Reference



County Location Reference

A-016-K1

A-016-J4

LAMAR
CISD
S01

A-28
R FOSTER

A-016-K4

A-016-P1

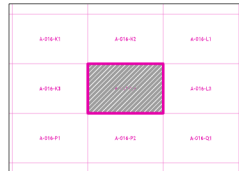
2021 Certified Tax Roll



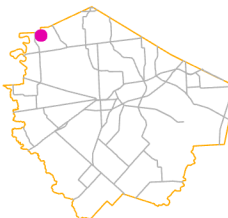
Grid Page
A-016-K4



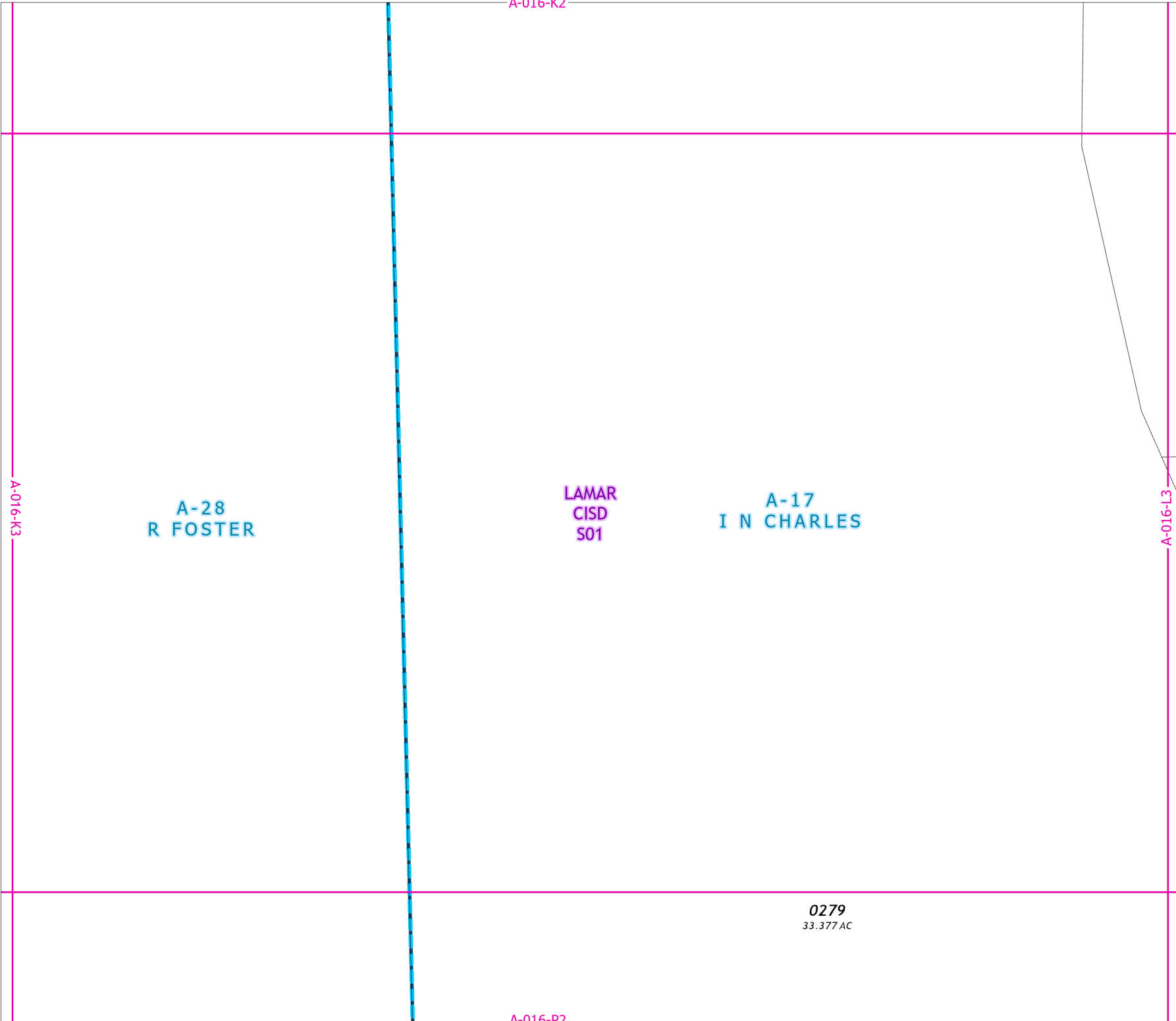
Fort Bend Central Appraisal District (FBCAD) is not authorized to determine legal title to property or establish the legal boundaries of property. FBCAD establishes appraisal records based on information from various sources, including but not limited to deeds, plats and surveys provided to but not created by the district. FBCAD is not responsible for errors or omissions in information submitted to and reviewed by the district. If any errors or omission are detected, contact the GIS Department of the FBCAD.



Grid Location Reference



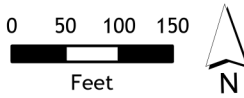
County Location Reference



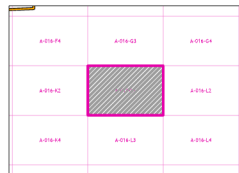


A-17
I N CHARLES

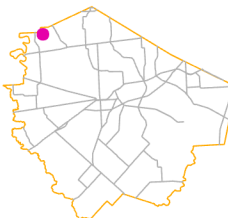
LAMAR
CISD
S01



Fort Bend Central Appraisal District (FBCAD) is not authorized to determine legal title to property or establish the legal boundaries of property. FBCAD establishes appraisal records based on information from various sources, including but not limited to deeds, plats and surveys provided to but not created by the district. FBCAD is not responsible for errors or omissions in information submitted to and reviewed by the district. If any errors or omission are detected, contact the GIS Department of the FBCAD.



Grid Location Reference



County Location Reference

0278
12 AC

HUNT RD

HUNT LN

2021 Certified Tax Roll



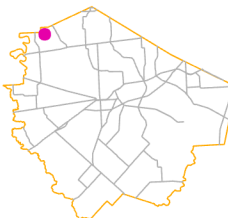
Grid Page
A-016-L2



Fort Bend Central Appraisal District (FBCAD) is not authorized to determine legal title to property or establish the legal boundaries of property. FBCAD establishes appraisal records based on information from various sources, including but not limited to deeds, plats and surveys provided to but not created by the district. FBCAD is not responsible for errors or omissions in information submitted to and reviewed by the district. If any errors or omission are detected, contact the GIS Department of the FBCAD.

| | | |
|----------|----------|----------|
| A-016-G1 | A-016-G4 | A-016-H0 |
| A-016-L1 | A-016-L2 | A-016-W1 |
| A-016-L3 | A-016-L4 | A-016-H2 |

Grid Location Reference



County Location Reference

A-016-G4

A-17
I N CHARLES

LAMAR
CISD
S01

HUNT RD

A-016-L4

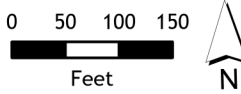
A-016-L1

A-016-M1

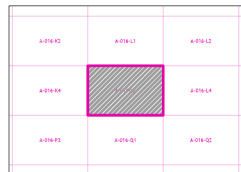
2021 Certified Tax Roll



Grid Page
A-016-L3



Fort Bend Central Appraisal District (FBCAD) is not authorized to determine legal title to property or establish the legal boundaries of property. FBCAD establishes appraisal records based on information from various sources, including but not limited to deeds, plats and surveys provided to but not created by the district. FBCAD is not responsible for errors or omissions in information submitted to and reviewed by the district. If any errors or omission are detected, contact the GIS Department of the FBCAD.



Grid Location Reference



County Location Reference





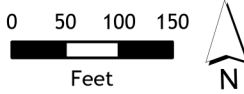
Grid Page A-016-L4

A-17
I N CHARLES

LAMAR
CISD
S01

A-016-L3

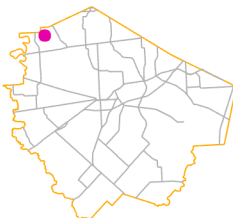
A-016-M3



Fort Bend Central Appraisal District (FBCAD) is not authorized to determine legal title to property or establish the legal boundaries of property. FBCAD establishes appraisal records based on information from various sources, including but not limited to deeds, plats and surveys provided to but not created by the district. FBCAD is not responsible for errors or omissions in information submitted to and reviewed by the district. If any errors or omission are detected, contact the GIS Department of the FBCAD.

| | | |
|----------|----------|----------|
| A-016-L1 | A-016-L2 | A-016-L3 |
| A-016-L3 | A-016-L4 | A-016-L5 |
| A-016-Q1 | A-016-Q2 | A-016-Q3 |

Grid Location Reference



County Location Reference

A-016-H3

6520-00

0294
167.996 AC

A-17
I N CHARLES

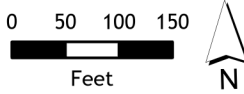
LAMAR
CISD
S01

HUNT RD

2021 Certified Tax Roll



Grid Page
A-016-M1



Fort Bend Central Appraisal District (FBCAD) is not authorized to determine legal title to property or establish the legal boundaries of property. FBCAD establishes appraisal records based on information from various sources, including but not limited to deeds, plats and surveys provided to but not created by the district. FBCAD is not responsible for errors or omissions in information submitted to and reviewed by the district. If any errors or omission are detected, contact the GIS Department of the FBCAD.

| | | |
|----------|----------|----------|
| A-016-M1 | A-016-M2 | A-016-M3 |
| A-016-M4 | A-016-M5 | A-016-M6 |
| A-016-M7 | A-016-M8 | A-016-M9 |

Grid Location Reference



County Location Reference

A-016-M3

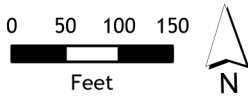
A-016-L2

A-016-M2



**Grid Page
A-016-M2**

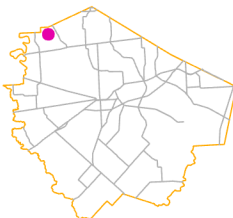
**A-17
I N CHARLES
LAMAR
CISD
S01**



Fort Bend Central Appraisal District (FBCAD) is not authorized to determine legal title to property or establish the legal boundaries of property. FBCAD establishes appraisal records based on information from various sources, including but not limited to deeds, plats and surveys provided to but not created by the district. FBCAD is not responsible for errors or omissions in information submitted to and reviewed by the district. If any errors or omission are detected, contact the GIS Department of the FBCAD.

| | | |
|----------|----------|----------|
| A-016-H3 | A-016-H4 | A-016-E1 |
| A-016-M1 | A-016-M2 | A-016-J1 |
| A-016-M3 | A-016-M4 | A-016-J3 |

Grid Location Reference



County Location Reference

HUNT RD

2021 Certified Tax Roll



**Grid Page
A-016-M3**

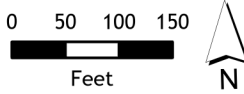
0282
156.584 AC

**A-17
I N CHARLES**

**LAMAR
CISD
S01**

A-016-L4

A-016-M4



Fort Bend Central Appraisal District (FBCAD) is not authorized to determine legal title to property or establish the legal boundaries of property. FBCAD establishes appraisal records based on information from various sources, including but not limited to deeds, plats and surveys provided to but not created by the district. FBCAD is not responsible for errors or omissions in information submitted to and reviewed by the district. If any errors or omission are detected, contact the GIS Department of the FBCAD.

| | | |
|----------|----------|----------|
| A-016-L2 | A-016-M3 | A-016-N2 |
| A-016-L4 | A-016-M4 | A-016-N4 |
| A-016-L6 | A-016-M6 | A-016-N6 |

Grid Location Reference



County Location Reference

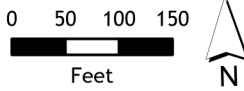


**Grid Page
A-016-M4**

**A-17
I N CHARLES
LAMAR
CISD
S01**

A-016-M3

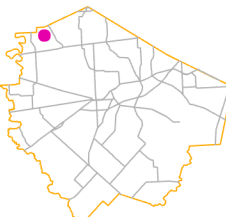
A-017-J3



Fort Bend Central Appraisal District (FBCAD) is not authorized to determine legal title to property or establish the legal boundaries of property. FBCAD establishes appraisal records based on information from various sources, including but not limited to deeds, plats and surveys provided to but not created by the district. FBCAD is not responsible for errors or omissions in information submitted to and reviewed by the district. If any errors or omission are detected, contact the GIS Department of the FBCAD.

| | | |
|----------|----------|----------|
| A-016-M1 | A-016-M2 | A-017-J1 |
| A-016-M3 | A-016-M4 | A-017-J2 |
| A-016-M5 | A-016-M6 | A-017-J3 |

Grid Location Reference



County Location Reference

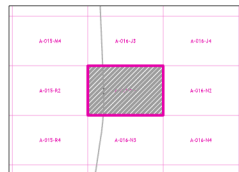
2021 Certified Tax Roll



Grid Page
A-016-N1



Fort Bend Central Appraisal District (FBCAD) is not authorized to determine legal title to property or establish the legal boundaries of property. FBCAD establishes appraisal records based on information from various sources, including but not limited to deeds, plats and surveys provided to but not created by the district. FBCAD is not responsible for errors or omissions in information submitted to and reviewed by the district. If any errors or omission are detected, contact the GIS Department of the FBCAD.



Grid Location Reference



County Location Reference



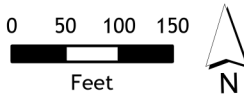
2021 Certified Tax Roll



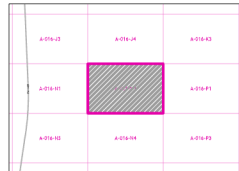
**Grid Page
A-016-N2**

**A-28
R FOSTER**

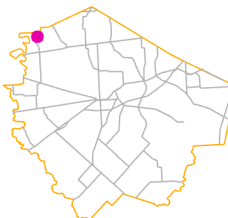
**LAMAR
CISD
S01**



Fort Bend Central Appraisal District (FBCAD) is not authorized to determine legal title to property or establish the legal boundaries of property. FBCAD establishes appraisal records based on information from various sources, including but not limited to deeds, plats and surveys provided to but not created by the district. FBCAD is not responsible for errors or omissions in information submitted to and reviewed by the district. If any errors or omission are detected, contact the GIS Department of the FBCAD.



Grid Location Reference



County Location Reference

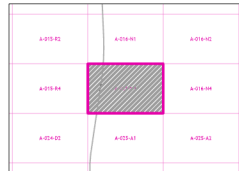
2021 Certified Tax Roll



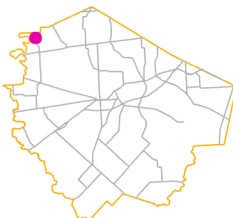
Grid Page
A-016-N3



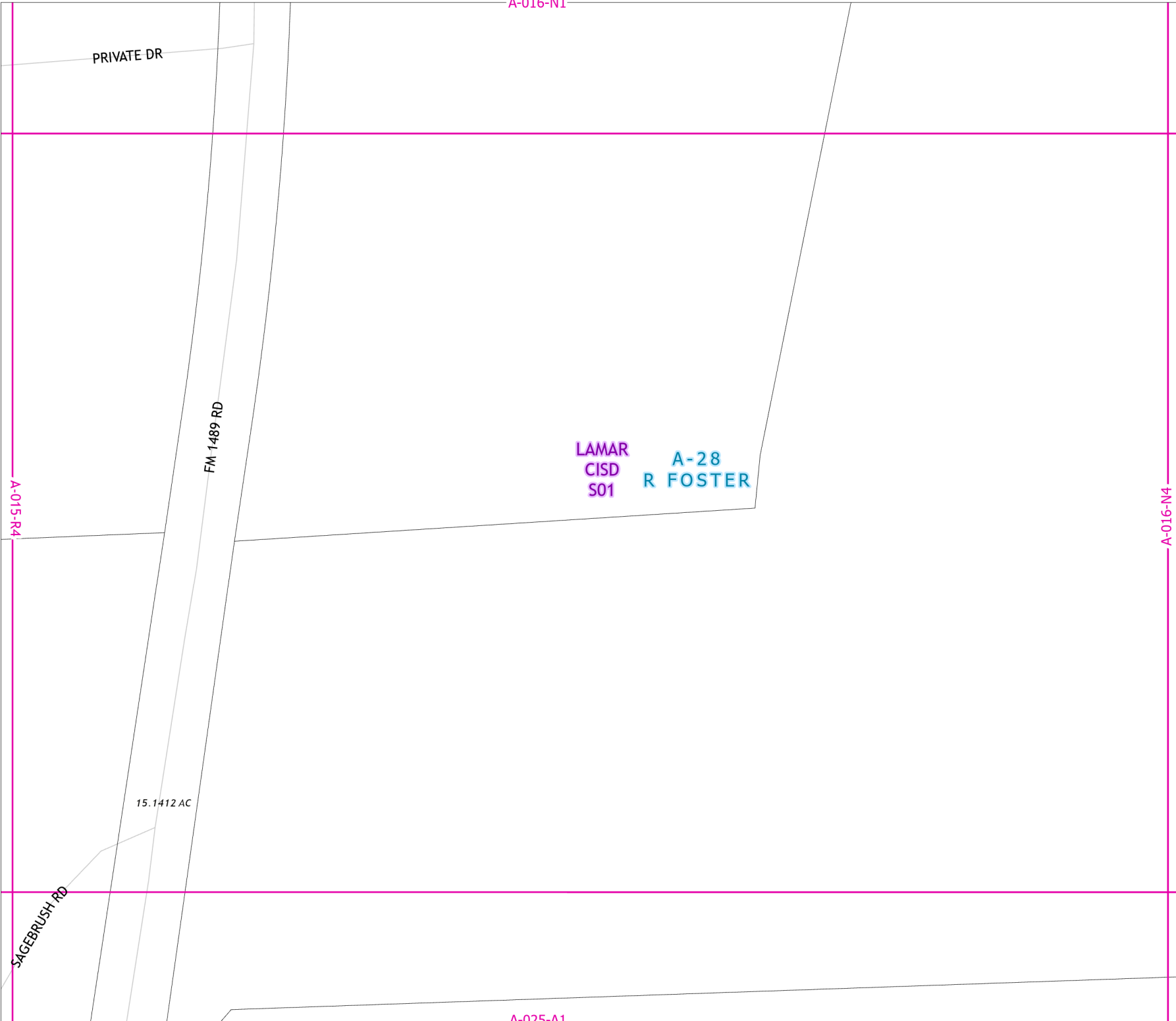
Fort Bend Central Appraisal District (FBCAD) is not authorized to determine legal title to property or establish the legal boundaries of property. FBCAD establishes appraisal records based on information from various sources, including but not limited to deeds, plats and surveys provided to but not created by the district. FBCAD is not responsible for errors or omissions in information submitted to and reviewed by the district. If any errors or omission are detected, contact the GIS Department of the FBCAD.



Grid Location Reference



County Location Reference



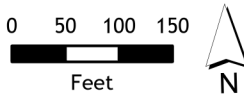
2021 Certified Tax Roll



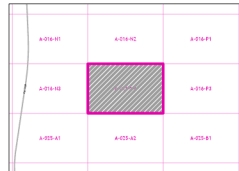
**Grid Page
A-016-N4**

**A-28
R FOSTER**

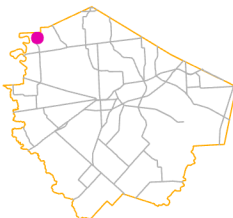
**LAMAR
CISD
S01**



Fort Bend Central Appraisal District (FBCAD) is not authorized to determine legal title to property or establish the legal boundaries of property. FBCAD establishes appraisal records based on information from various sources, including but not limited to deeds, plats and surveys provided to but not created by the district. FBCAD is not responsible for errors or omissions in information submitted to and reviewed by the district. If any errors or omission are detected, contact the GIS Department of the FBCAD.



Grid Location Reference



County Location Reference

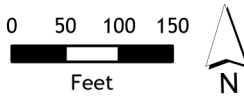
2021 Certified Tax Roll



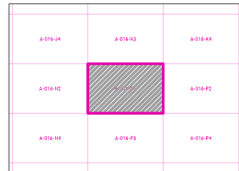
**Grid Page
A-016-P1**

**A-28
R FOSTER**

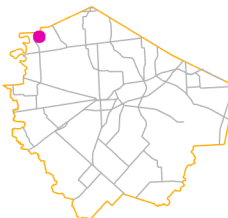
**LAMAR
CISD
S01**



Fort Bend Central Appraisal District (FBCAD) is not authorized to determine legal title to property or establish the legal boundaries of property. FBCAD establishes appraisal records based on information from various sources, including but not limited to deeds, plats and surveys provided to but not created by the district. FBCAD is not responsible for errors or omissions in information submitted to and reviewed by the district. If any errors or omission are detected, contact the GIS Department of the FBCAD.



Grid Location Reference

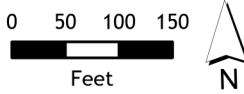


County Location Reference

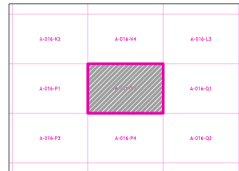
2021 Certified Tax Roll



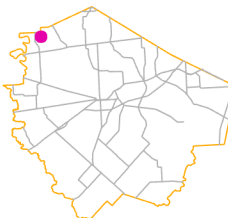
Grid Page
A-016-P2



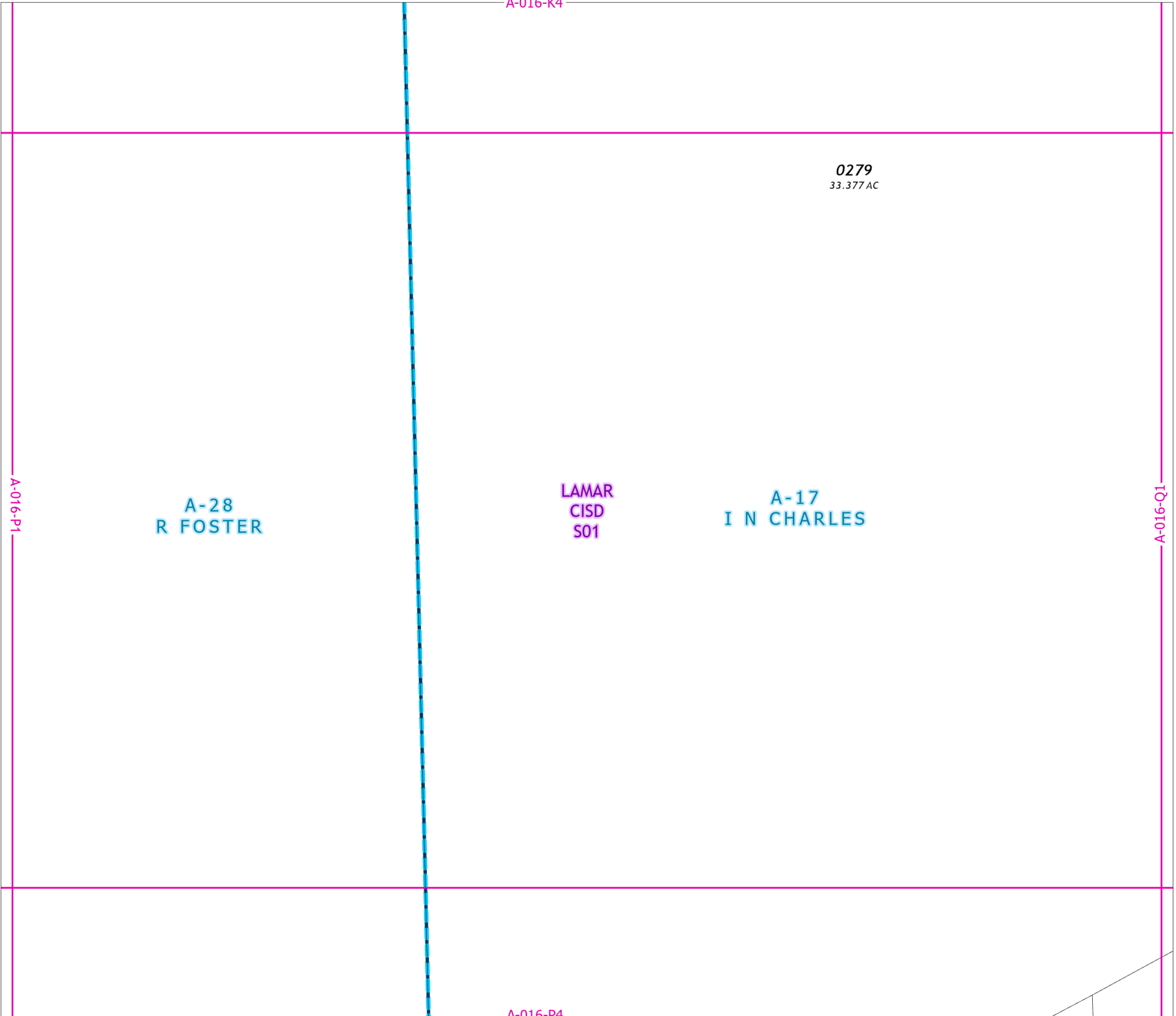
Fort Bend Central Appraisal District (FBCAD) is not authorized to determine legal title to property or establish the legal boundaries of property. FBCAD establishes appraisal records based on information from various sources, including but not limited to deeds, plats and surveys provided to but not created by the district. FBCAD is not responsible for errors or omissions in information submitted to and reviewed by the district. If any errors or omission are detected, contact the GIS Department of the FBCAD.



Grid Location Reference



County Location Reference



A-016-P1

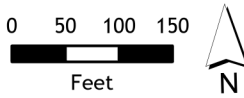
2021 Certified Tax Roll



Grid Page
A-016-P3

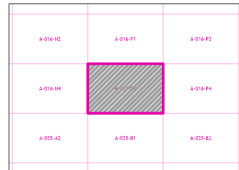
LAMAR
CISD
S01

A-28
R FOSTER



Fort Bend Central Appraisal District (FBCAD) is not authorized to determine legal title to property or establish the legal boundaries of property. FBCAD establishes appraisal records based on information from various sources, including but not limited to deeds, plats and surveys provided to but not created by the district. FBCAD is not responsible for errors or omissions in information submitted to and reviewed by the district. If any errors or omission are detected, contact the GIS Department of the FBCAD.

0180
16.4 AC



Grid Location Reference



County Location Reference

A-016-N4

A-016-P4

A-025-B1

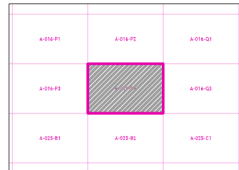
2021 Certified Tax Roll



Grid Page
A-016-P4



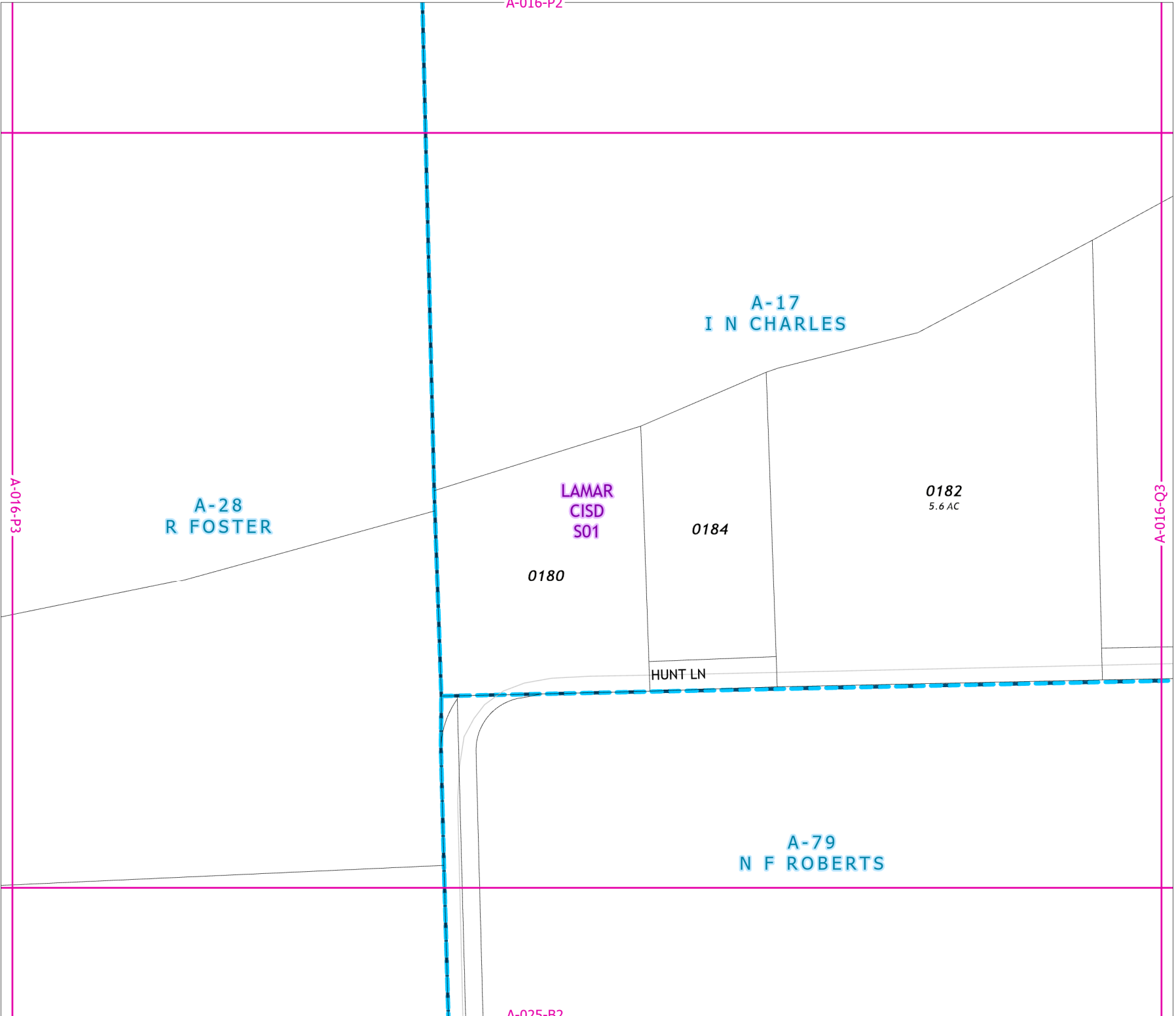
Fort Bend Central Appraisal District (FBCAD) is not authorized to determine legal title to property or establish the legal boundaries of property. FBCAD establishes appraisal records based on information from various sources, including but not limited to deeds, plats and surveys provided to but not created by the district. FBCAD is not responsible for errors or omissions in information submitted to and reviewed by the district. If any errors or omission are detected, contact the GIS Department of the FBCAD.



Grid Location Reference



County Location Reference



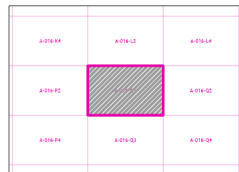
2021 Certified Tax Roll



Grid Page
A-016-Q1



Fort Bend Central Appraisal District (FBCAD) is not authorized to determine legal title to property or establish the legal boundaries of property. FBCAD establishes appraisal records based on information from various sources, including but not limited to deeds, plats and surveys provided to but not created by the district. FBCAD is not responsible for errors or omissions in information submitted to and reviewed by the district. If any errors or omission are detected, contact the GIS Department of the FBCAD.



Grid Location Reference



County Location Reference



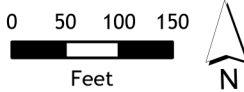


**Grid Page
A-016-Q2**

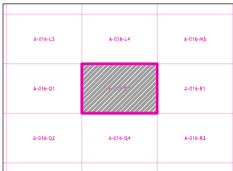
**A-17
I N CHARLES
LAMAR
CISD
S01**

A-016-Q1

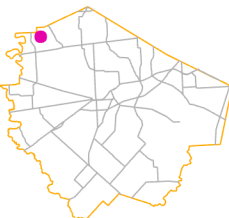
A-016-R1



Fort Bend Central Appraisal District (FBCAD) is not authorized to determine legal title to property or establish the legal boundaries of property. FBCAD establishes appraisal records based on information from various sources, including but not limited to deeds, plats and surveys provided to but not created by the district. FBCAD is not responsible for errors or omissions in information submitted to and reviewed by the district. If any errors or omission are detected, contact the GIS Department of the FBCAD.



Grid Location Reference

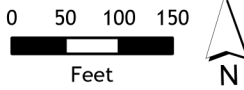


County Location Reference

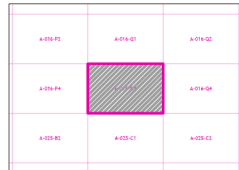
2021 Certified Tax Roll



Grid Page
A-016-Q3



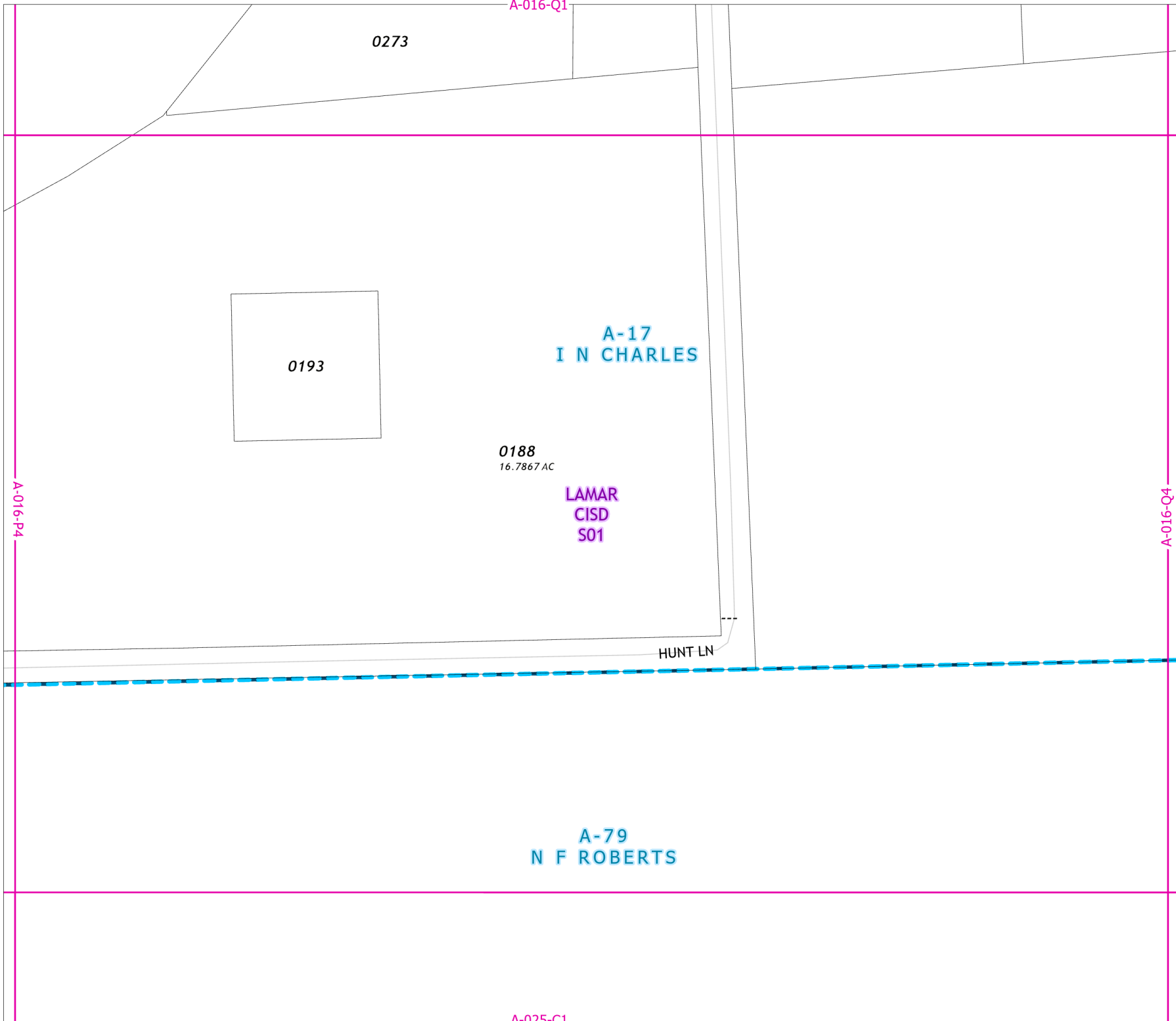
Fort Bend Central Appraisal District (FBCAD) is not authorized to determine legal title to property or establish the legal boundaries of property. FBCAD establishes appraisal records based on information from various sources, including but not limited to deeds, plats and surveys provided to but not created by the district. FBCAD is not responsible for errors or omissions in information submitted to and reviewed by the district. If any errors or omission are detected, contact the GIS Department of the FBCAD.



Grid Location Reference



County Location Reference



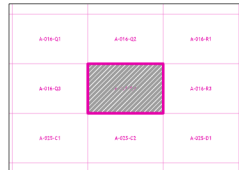
2021 Certified Tax Roll



Grid Page
A-016-Q4



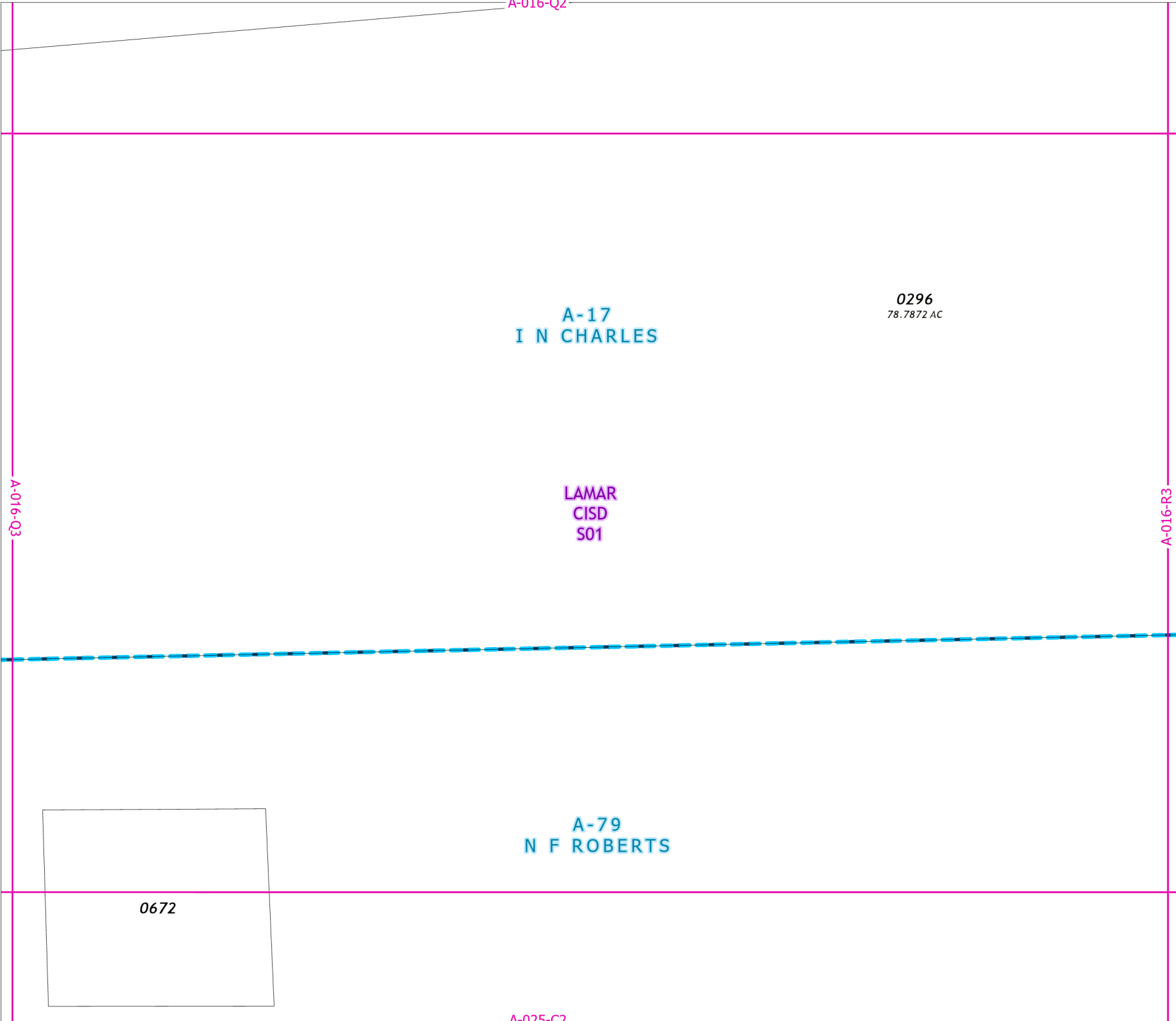
Fort Bend Central Appraisal District (FBCAD) is not authorized to determine legal title to property or establish the legal boundaries of property. FBCAD establishes appraisal records based on information from various sources, including but not limited to deeds, plats and surveys provided to but not created by the district. FBCAD is not responsible for errors or omissions in information submitted to and reviewed by the district. If any errors or omission are detected, contact the GIS Department of the FBCAD.



Grid Location Reference



County Location Reference



2021 Certified Tax Roll



**Grid Page
A-016-R1**

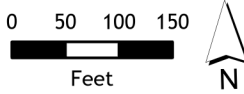
0295
157.0328 AC

**A-17
I N CHARLES**

**LAMAR
CISD
S01**

A-016-Q2

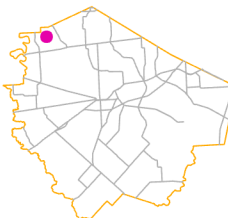
A-016-R2



Fort Bend Central Appraisal District (FBCAD) is not authorized to determine legal title to property or establish the legal boundaries of property. FBCAD establishes appraisal records based on information from various sources, including but not limited to deeds, plats and surveys provided to but not created by the district. FBCAD is not responsible for errors or omissions in information submitted to and reviewed by the district. If any errors or omission are detected, contact the GIS Department of the FBCAD.

| | | |
|----------|----------|----------|
| A-016-Q4 | A-016-Q2 | A-016-Q4 |
| A-016-Q2 | A-016-R1 | A-016-Q2 |
| A-016-Q4 | A-016-Q2 | A-016-Q4 |

Grid Location Reference



County Location Reference

A-016-M4

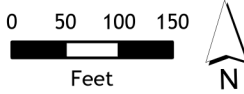
2021 Certified Tax Roll



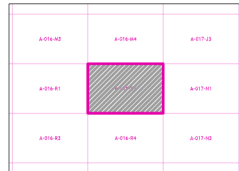
Grid Page
A-016-R2

A-17
I N CHARLES

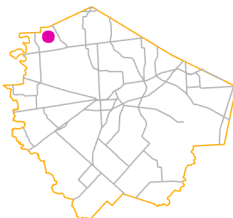
LAMAR
CISD
S01



Fort Bend Central Appraisal District (FBCAD) is not authorized to determine legal title to property or establish the legal boundaries of property. FBCAD establishes appraisal records based on information from various sources, including but not limited to deeds, plats and surveys provided to but not created by the district. FBCAD is not responsible for errors or omissions in information submitted to and reviewed by the district. If any errors or omission are detected, contact the GIS Department of the FBCAD.



Grid Location Reference



County Location Reference

A-016-R1

A-017-N1

0080
25.2 AC

0083
13.5 AC

0081
5.7 AC

A-016-R4

A-016-R1

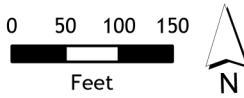
2021 Certified Tax Roll



Grid Page
A-016-R3

A-17
I N CHARLES

LAMAR
CISD
S01



Fort Bend Central Appraisal District (FBCAD) is not authorized to determine legal title to property or establish the legal boundaries of property. FBCAD establishes appraisal records based on information from various sources, including but not limited to deeds, plats and surveys provided to but not created by the district. FBCAD is not responsible for errors or omissions in information submitted to and reviewed by the district. If any errors or omission are detected, contact the GIS Department of the FBCAD.

A-016-Q4

A-016-R4

A-79
N F ROBERTS

| | | |
|----------|----------|----------|
| A-016-Q2 | A-016-Q1 | A-016-Q3 |
| A-016-Q4 | A-016-R3 | A-016-Q4 |
| A-025-D2 | A-025-D1 | A-025-D3 |

Grid Location Reference



County Location Reference

A-025-D1

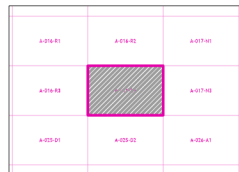
2021 Certified Tax Roll



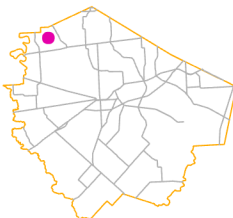
**Grid Page
A-016-R4**



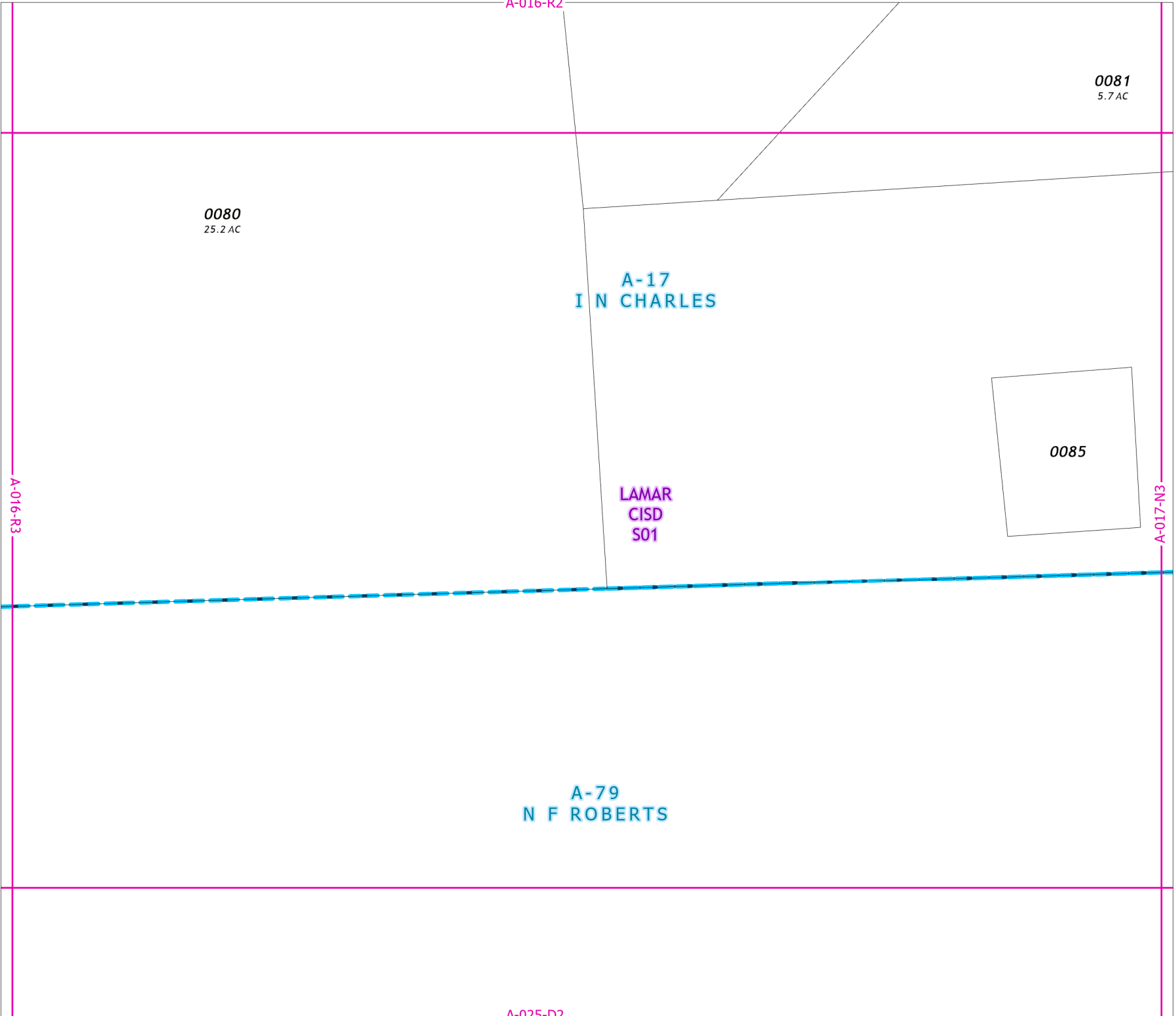
Fort Bend Central Appraisal District (FBCAD) is not authorized to determine legal title to property or establish the legal boundaries of property. FBCAD establishes appraisal records based on information from various sources, including but not limited to deeds, plats and surveys provided to but not created by the district. FBCAD is not responsible for errors or omissions in information submitted to and reviewed by the district. If any errors or omission are detected, contact the GIS Department of the FBCAD.



Grid Location Reference



County Location Reference



A-016-R2

0081
5.7 AC

0080
25.2 AC

A-17
I N CHARLES

0085

LAMAR
CISD
S01

A-017-N3

A-016-R3

A-79
N F ROBERTS

A-025-D2