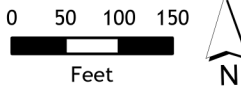


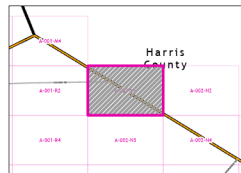
2021 Certified Tax Roll



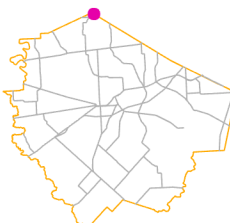
Grid Page
A-002-N1



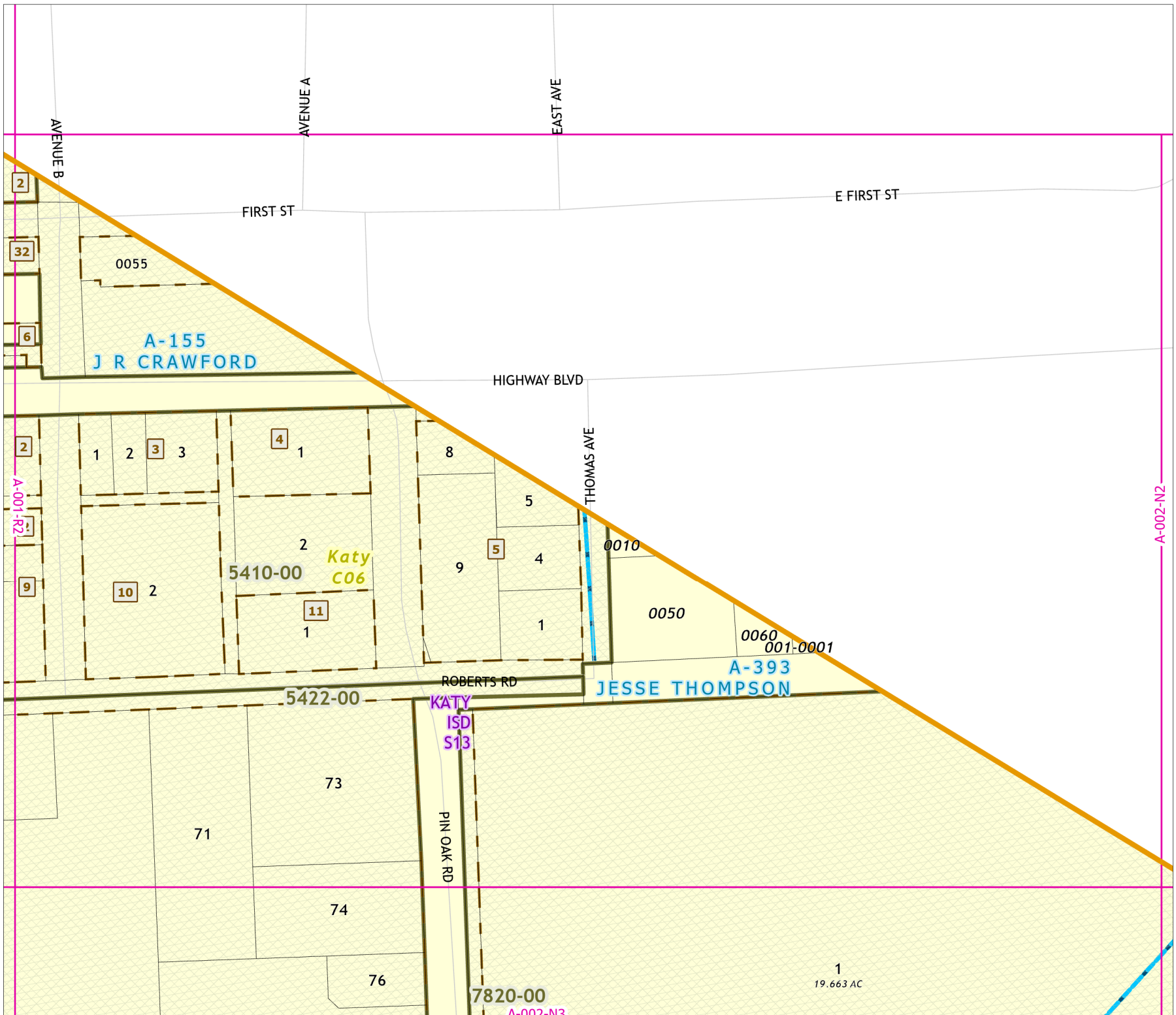
Fort Bend Central Appraisal District (FBCAD) is not authorized to determine legal title to property or establish the legal boundaries of property. FBCAD establishes appraisal records based on information from various sources, including but not limited to deeds, plats and surveys provided to but not created by the district. FBCAD is not responsible for errors or omissions in information submitted to and reviewed by the district. If any errors or omission are detected, contact the GIS Department of the FBCAD.



Grid Location Reference



County Location Reference



A-001-R2

A-002-N2

A-002-N3

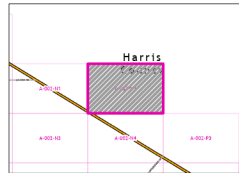
2021 Certified Tax Roll



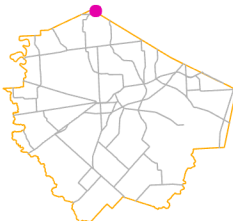
**Grid Page
A-002-N2**



Fort Bend Central Appraisal District (FBCAD) is not authorized to determine legal title to property or establish the legal boundaries of property. FBCAD establishes appraisal records based on information from various sources, including but not limited to deeds, plats and surveys provided to but not created by the district. FBCAD is not responsible for errors or omissions in information submitted to and reviewed by the district. If any errors or omission are detected, contact the GIS Department of the FBCAD.



Grid Location Reference



County Location Reference

E FIRST ST

HIGHWAY BLVD

A-002-N1

7820-00

Katy
C06 KATY
ISD

A-292 S13

JOHN MCKNIGHT

1

8498-00

A-002-N4

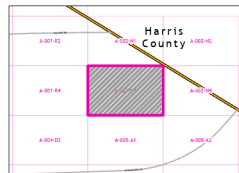
2021 Certified Tax Roll



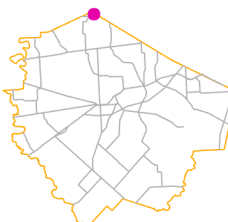
Grid Page
A-002-N3



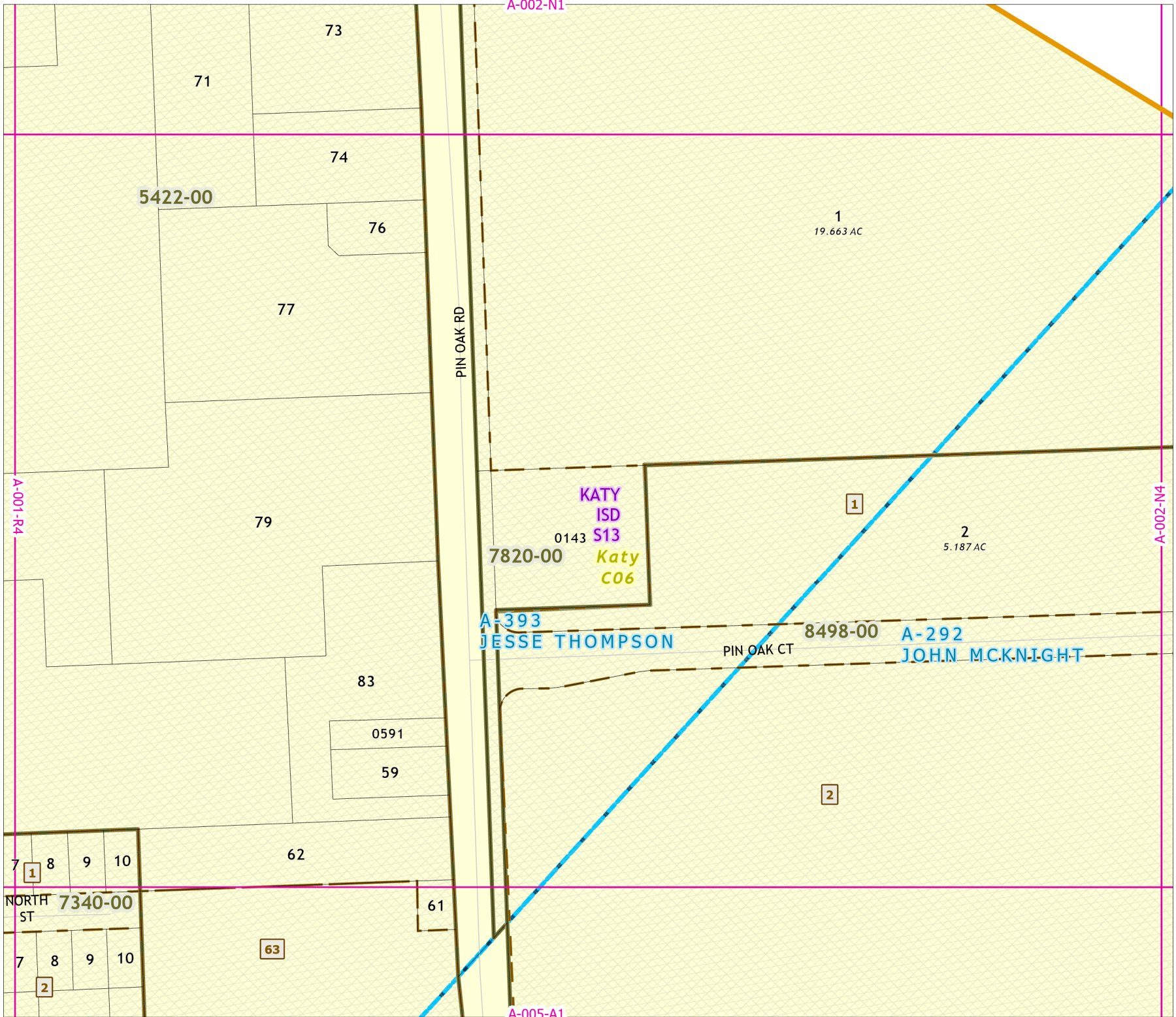
Fort Bend Central Appraisal District (FBCAD) is not authorized to determine legal title to property or establish the legal boundaries of property. FBCAD establishes appraisal records based on information from various sources, including but not limited to deeds, plats and surveys provided to but not created by the district. FBCAD is not responsible for errors or omissions in information submitted to and reviewed by the district. If any errors or omission are detected, contact the GIS Department of the FBCAD.

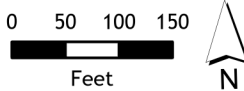
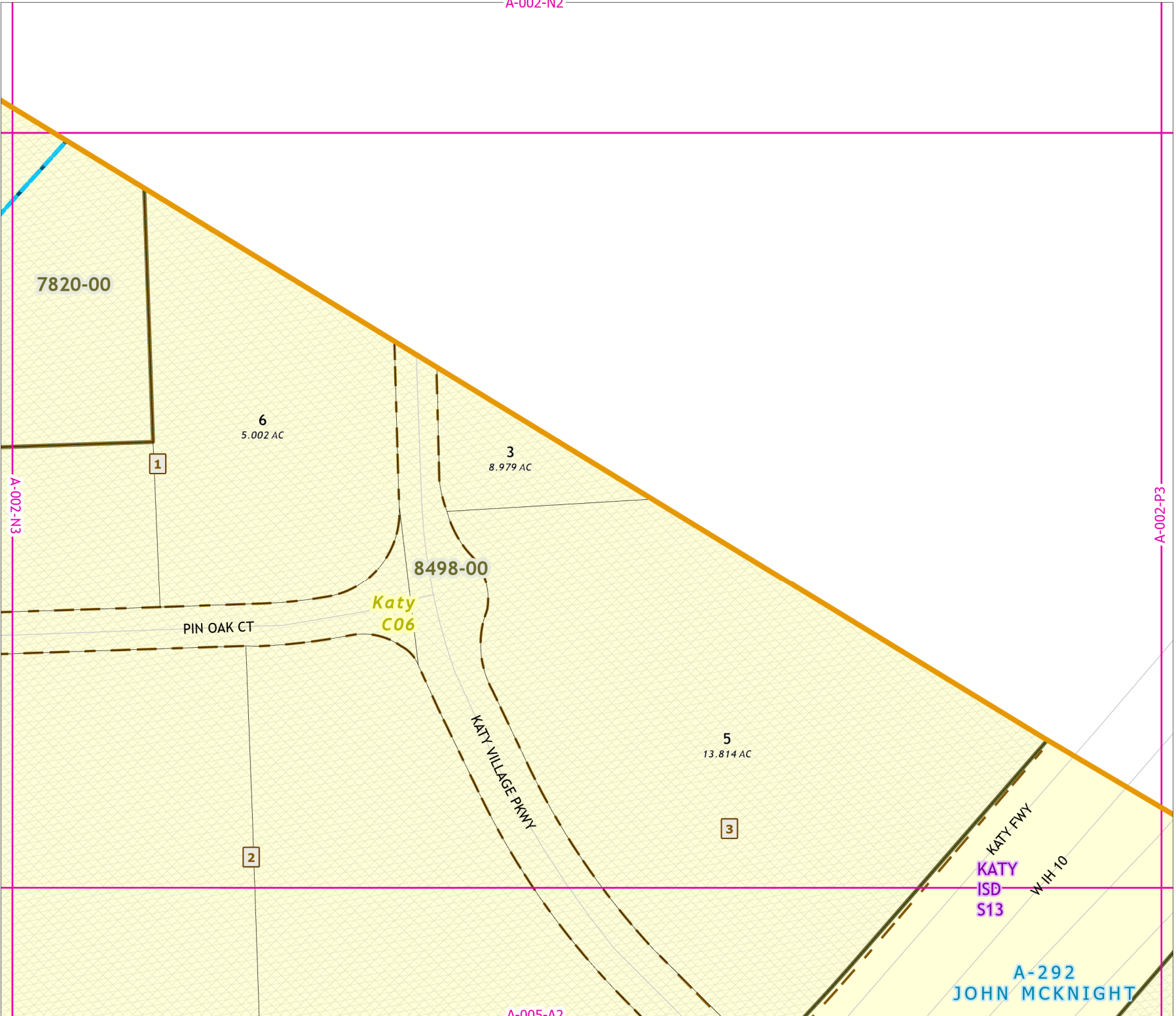


Grid Location Reference

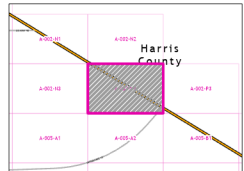


County Location Reference

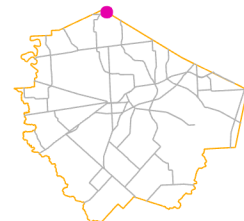




Fort Bend Central Appraisal District (FBCAD) is not authorized to determine legal title to property or establish the legal boundaries of property. FBCAD establishes appraisal records based on information from various sources, including but not limited to deeds, plats and surveys provided to but not created by the district. FBCAD is not responsible for errors or omissions in information submitted to and reviewed by the district. If any errors or omission are detected, contact the GIS Department of the FBCAD.



Grid Location Reference



County Location Reference

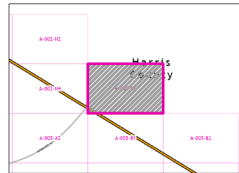
2021 Certified Tax Roll



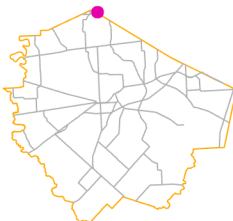
Grid Page
A-002-P3



Fort Bend Central Appraisal District (FBCAD) is not authorized to determine legal title to property or establish the legal boundaries of property. FBCAD establishes appraisal records based on information from various sources, including but not limited to deeds, plats and surveys provided to but not created by the district. FBCAD is not responsible for errors or omissions in information submitted to and reviewed by the district. If any errors or omission are detected, contact the GIS Department of the FBCAD.



Grid Location Reference



County Location Reference

